



**CUSHMAN &  
WAKEFIELD**

FOR LEASE

**PRIME OFFICE SPACE ON HWY 89**  
**2797 N. Hwy 89, Suite Pleasant View, UT**



### Property Highlights

- Spaces Available:
- Suite 102: 857 SF
  - » Mostly open
  - » Private/separate entrance from the westparking lot
- Suite 301: 988 SF - 2,965 SF
  - » Can be subdivided
  - » Move-in ready
- Lease Rate: \$17.50 PSF/NNN
- 2024 CAM: \$3.00 PSF
- Excellent location on Hwy 89 with professional co-tenants
- Easy access to I-15
- Pylon signage available
- Tenant covers their own gas, electricity, and in-suite janitorial



**April Hartzell**  
Associate  
+1 801 784 5319  
april.hartzell@cushwake.com

**Julie Brown**  
Senior Associate  
+1 801 784 5317  
julie.brown@cushwake.com

2225 Washington Blvd, Suite 175  
Ogden, Utah 84401  
Main: +1 801 525 3000  
**cushmanwakefield.com**

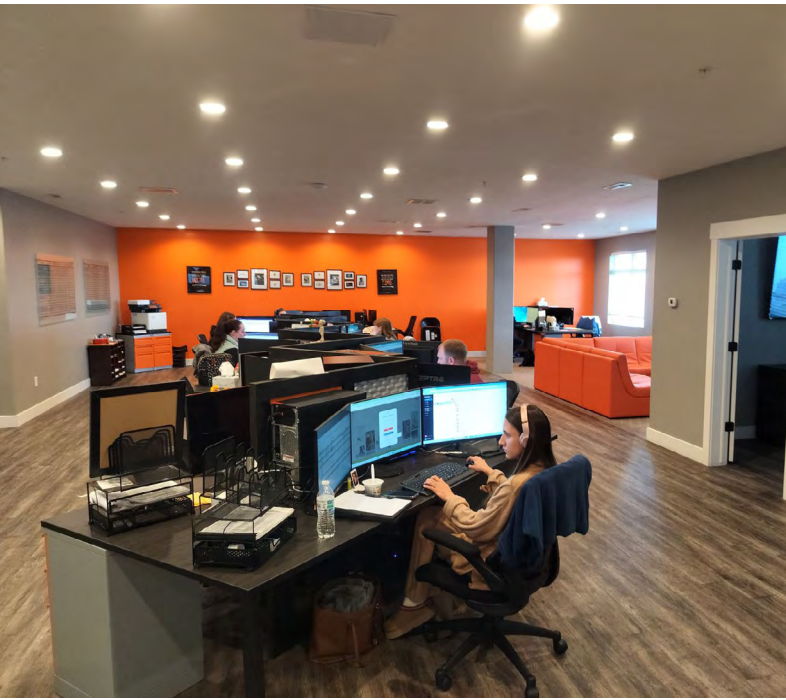




FOR LEASE

# PRIME OFFICE SPACE ON HWY 89

2797 N. Hwy 89, Suite Pleasant View, UT



**April Hartzell**  
Associate  
+1 801 784 5319  
april.hartzell@cushwake.com

**Julie Brown**  
Senior Associate  
+1 801 784 5317  
julie.brown@cushwake.com

2225 Washington Blvd, Suite 175  
Ogden, Utah 84401  
Main: +1 801 525 3000  
**cushmanwakefield.com**

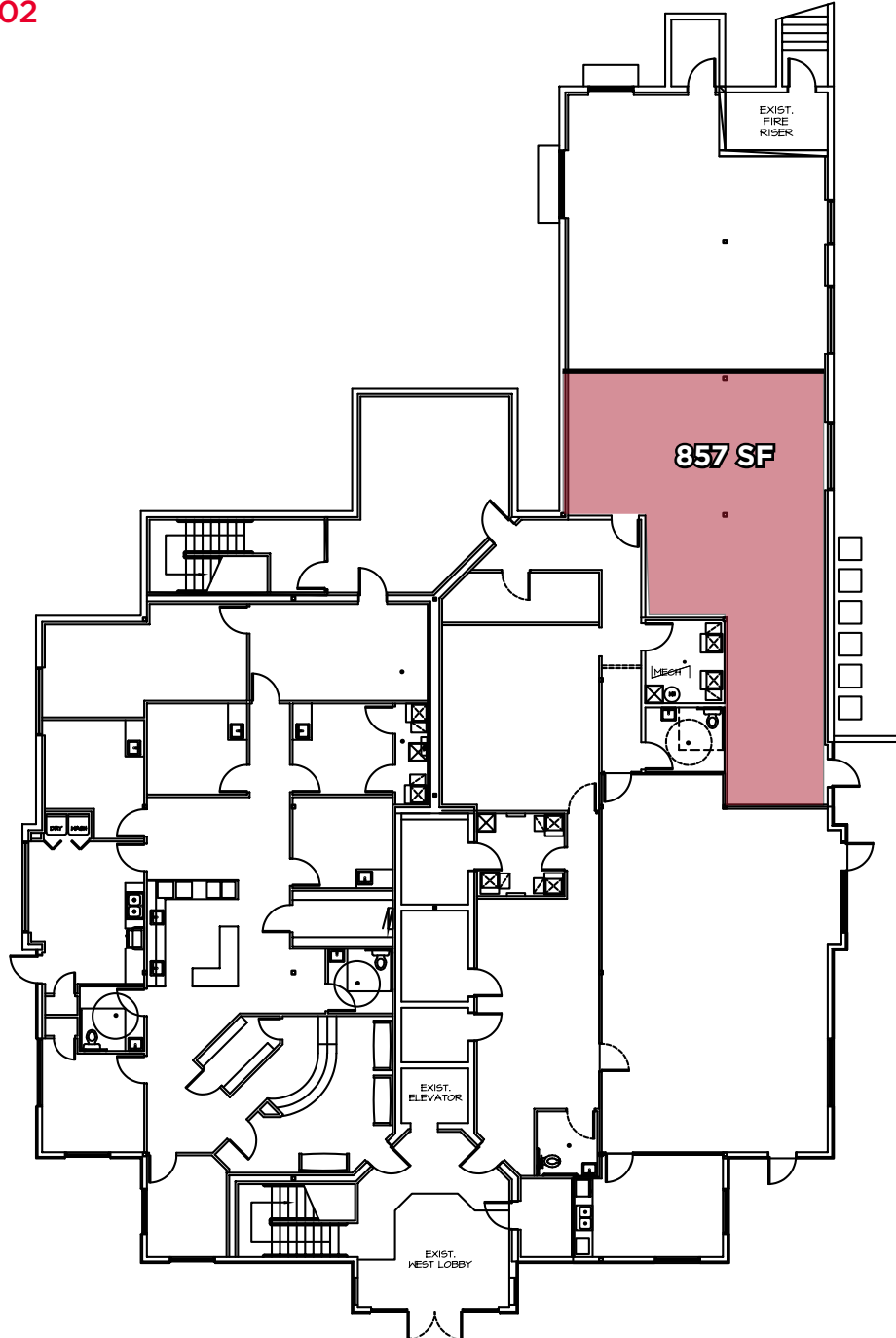


**CUSHMAN &  
WAKEFIELD**

FOR LEASE

**PRIME OFFICE SPACE ON HWY 89**  
**2797 N. Hwy 89, Suite Pleasant View, UT**

**Floor Plan - Suite 102**



**April Hartzell**  
Associate  
+1 801 784 5319  
april.hartzell@cushwake.com

**Julie Brown**  
Senior Associate  
+1 801 784 5317  
julie.brown@cushwake.com

2225 Washington Blvd, Suite 175  
Ogden, Utah 84401  
Main: +1 801 525 3000  
**cushmanwakefield.com**

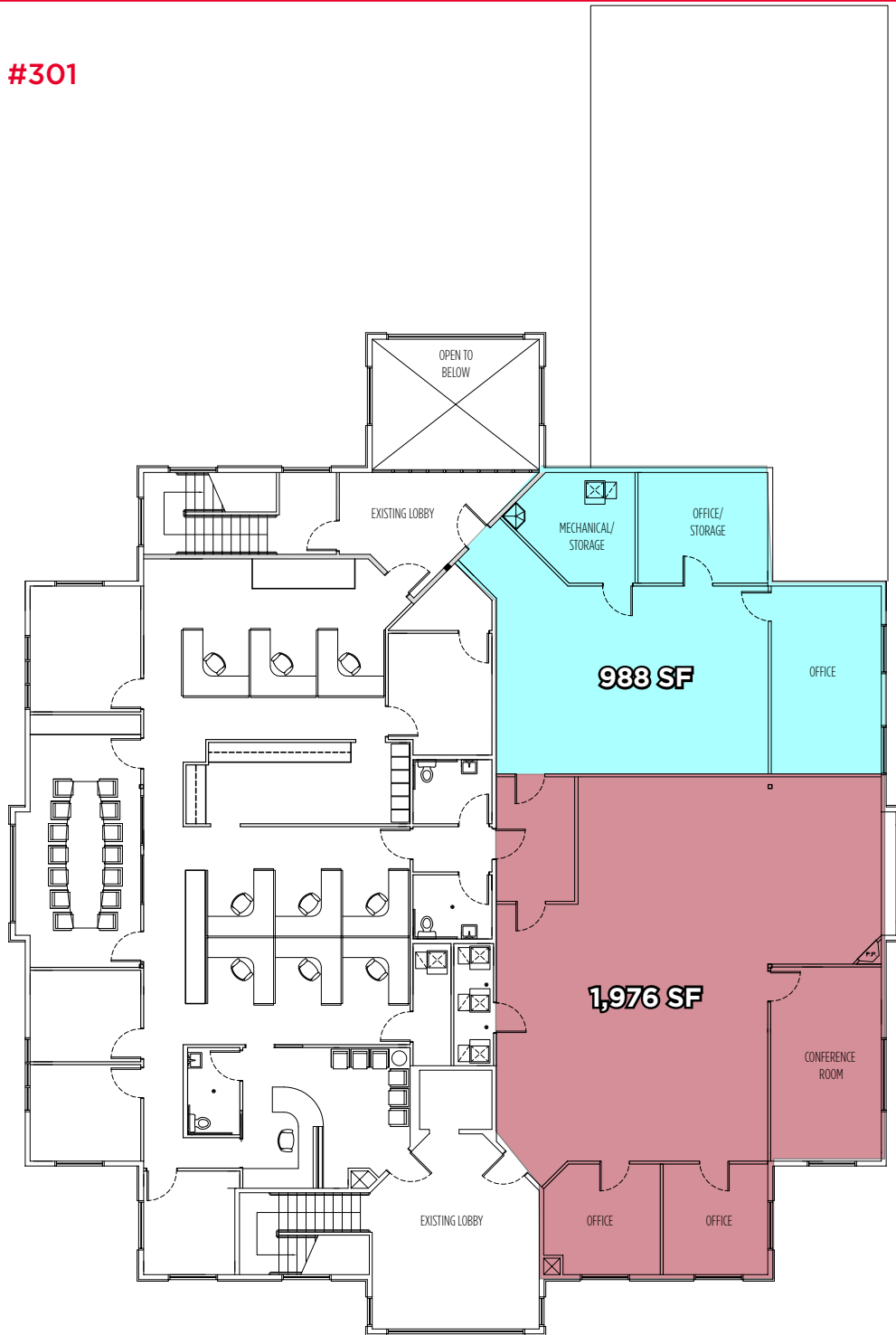


**CUSHMAN &  
WAKEFIELD**

FOR LEASE

**PRIME OFFICE SPACE ON HWY 89**  
**2797 N. Hwy 89, Suite Pleasant View, UT**

**Floor Plan - Suite #301**



**April Hartzell**  
Associate  
+1 801 784 5319  
april.hartzell@cushwake.com

**Julie Brown**  
Senior Associate  
+1 801 784 5317  
julie.brown@cushwake.com

2225 Washington Blvd, Suite 175  
Ogden, Utah 84401  
Main: +1 801 525 3000  
**cushmanwakefield.com**

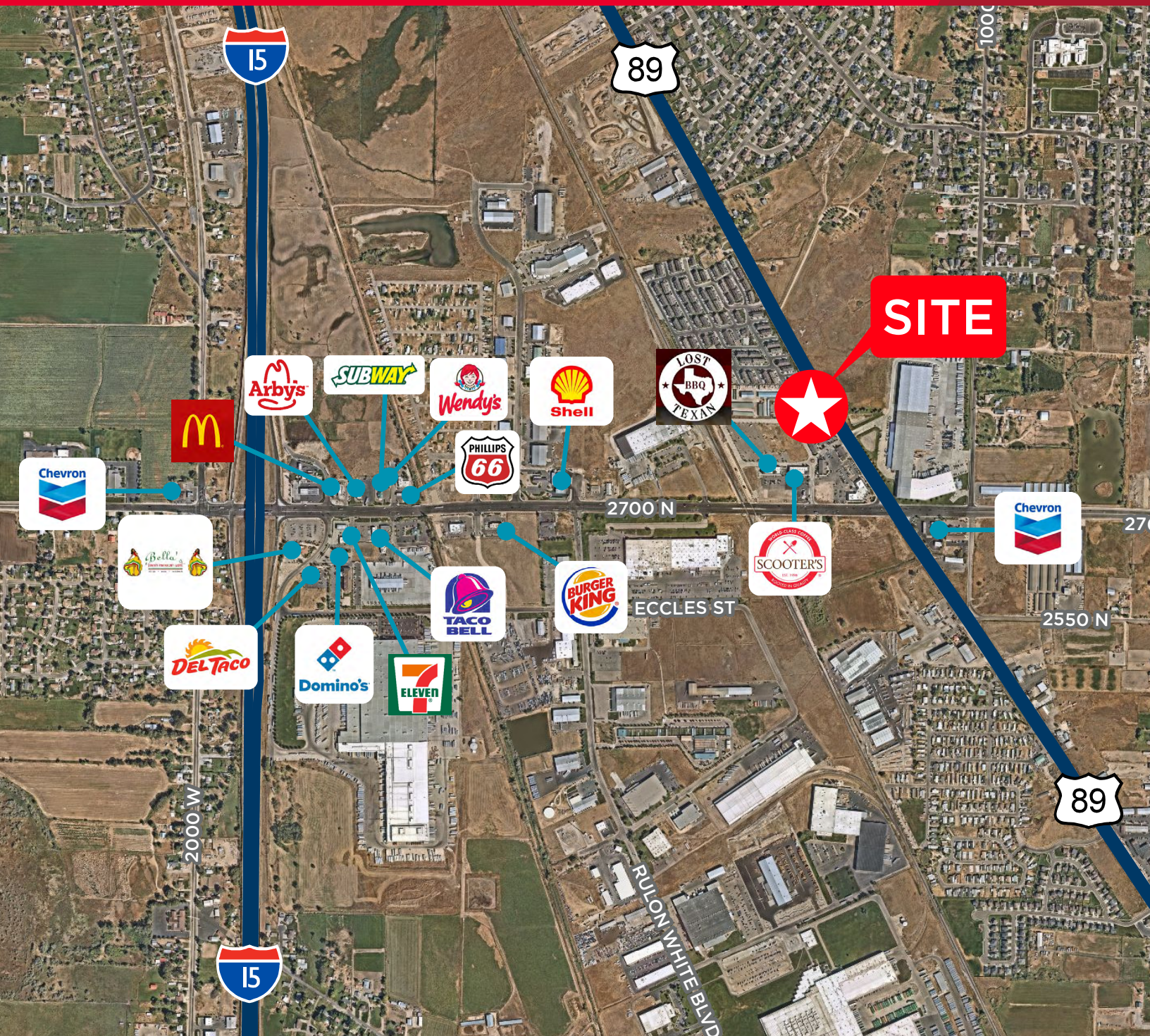




**CUSHMAN &  
WAKEFIELD**

FOR LEASE

**PRIME OFFICE SPACE ON HWY 89**  
2797 N. Hwy 89, Suite Pleasant View, UT



**April Hartzell**  
Associate  
+1 801 784 5319  
april.hartzell@cushwake.com

**Julie Brown**  
Senior Associate  
+1 801 784 5317  
julie.brown@cushwake.com

2225 Washington Blvd, Suite 175  
Ogden, Utah 84401  
Main: +1 801 525 3000  
**cushmanwakefield.com**