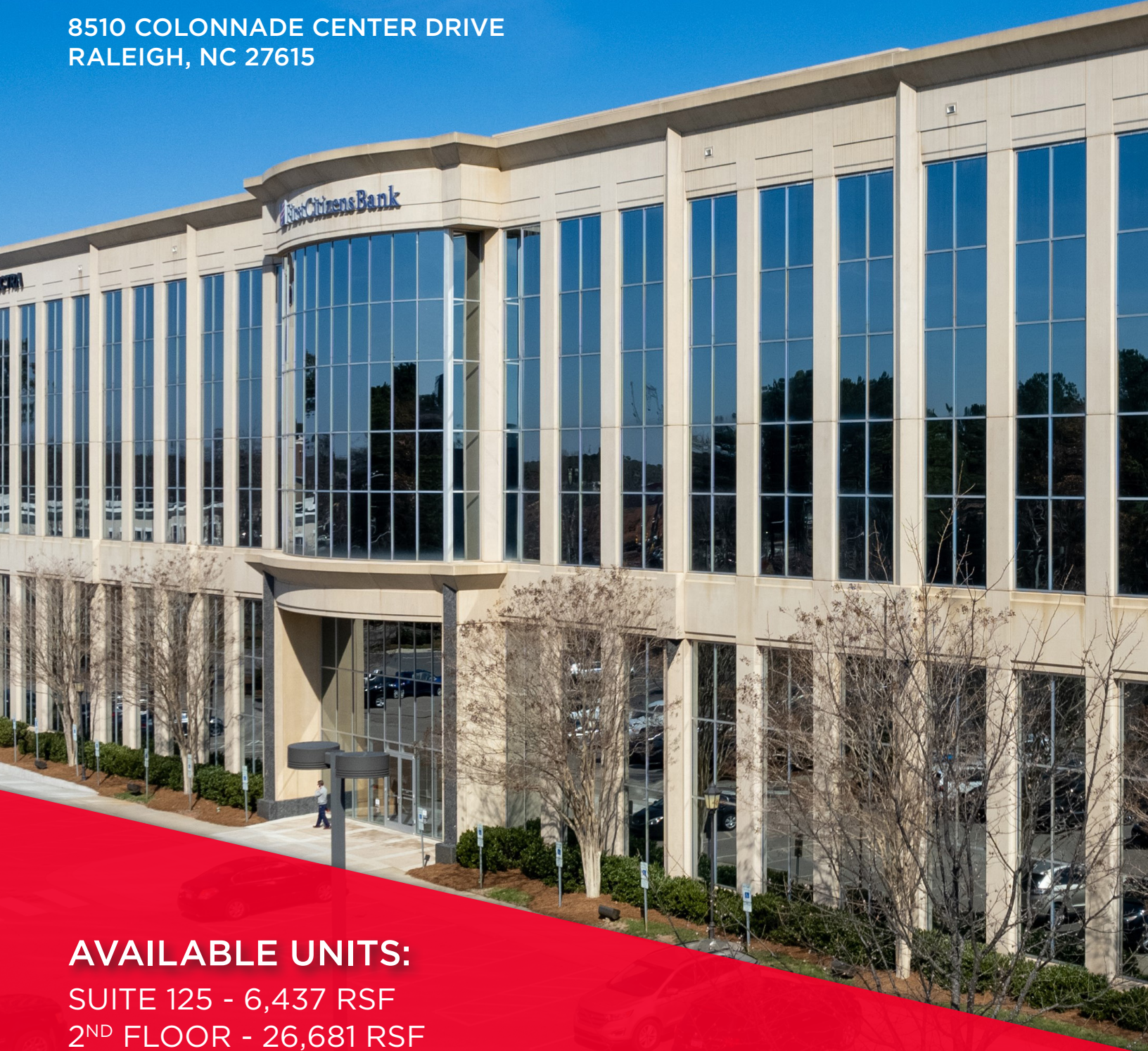


# COLONNADE II

8510 COLONNADE CENTER DRIVE  
RALEIGH, NC 27615



## AVAILABLE UNITS:

SUITE 125 - 6,437 RSF

2<sup>ND</sup> FLOOR - 26,681 RSF

3<sup>RD</sup> FLOOR - 25,681 RSF

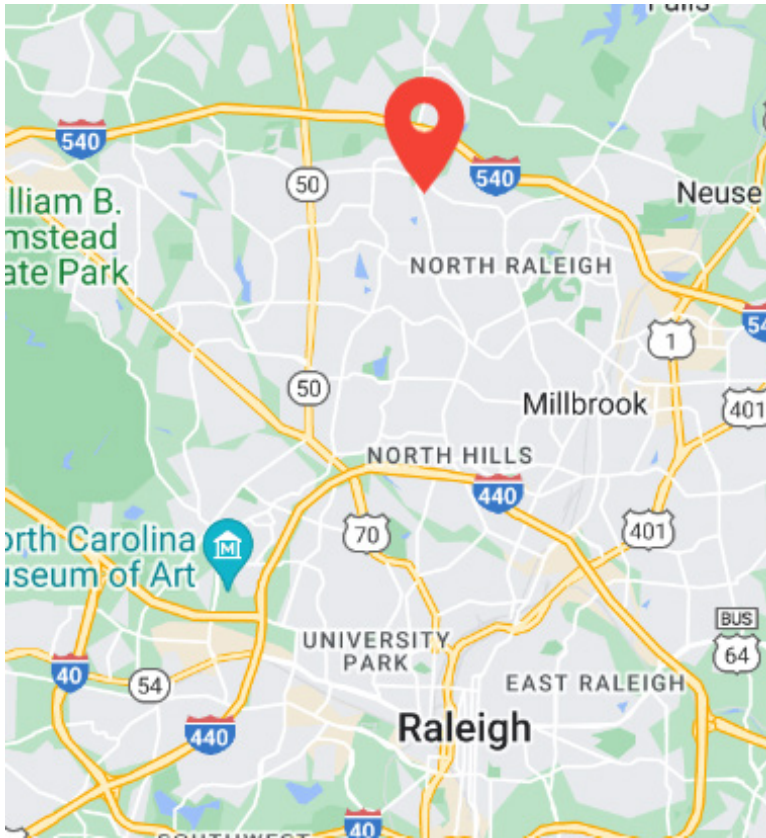
4<sup>TH</sup> FLOOR - 26,226 RSF

5<sup>TH</sup> FLOOR - 26,226 RSF



# PROPERTY SUMMARY

- Suite 125, 2nd, 3rd, 4th, and 5th floor available
- 131,128 square foot, 5-story Class A Office building
- Within walking distance of, restaurants and shopping
- Convenient North Raleigh location with immediate access to I-540, 15 minutes from RDU International Airport
- \$29.50/SF Full Service
- Free surface parking - 4.0/1000 ratio



# PROPERTY SUMMARY

## WALKABLE AMENITIES

-  Whole Foods
-  Panera Bread
-  Chick Fil A
-  The Home Depot
-  Food Lion
-  Lowes Foods
-  State Employee's Credit Union
-  Bank of America

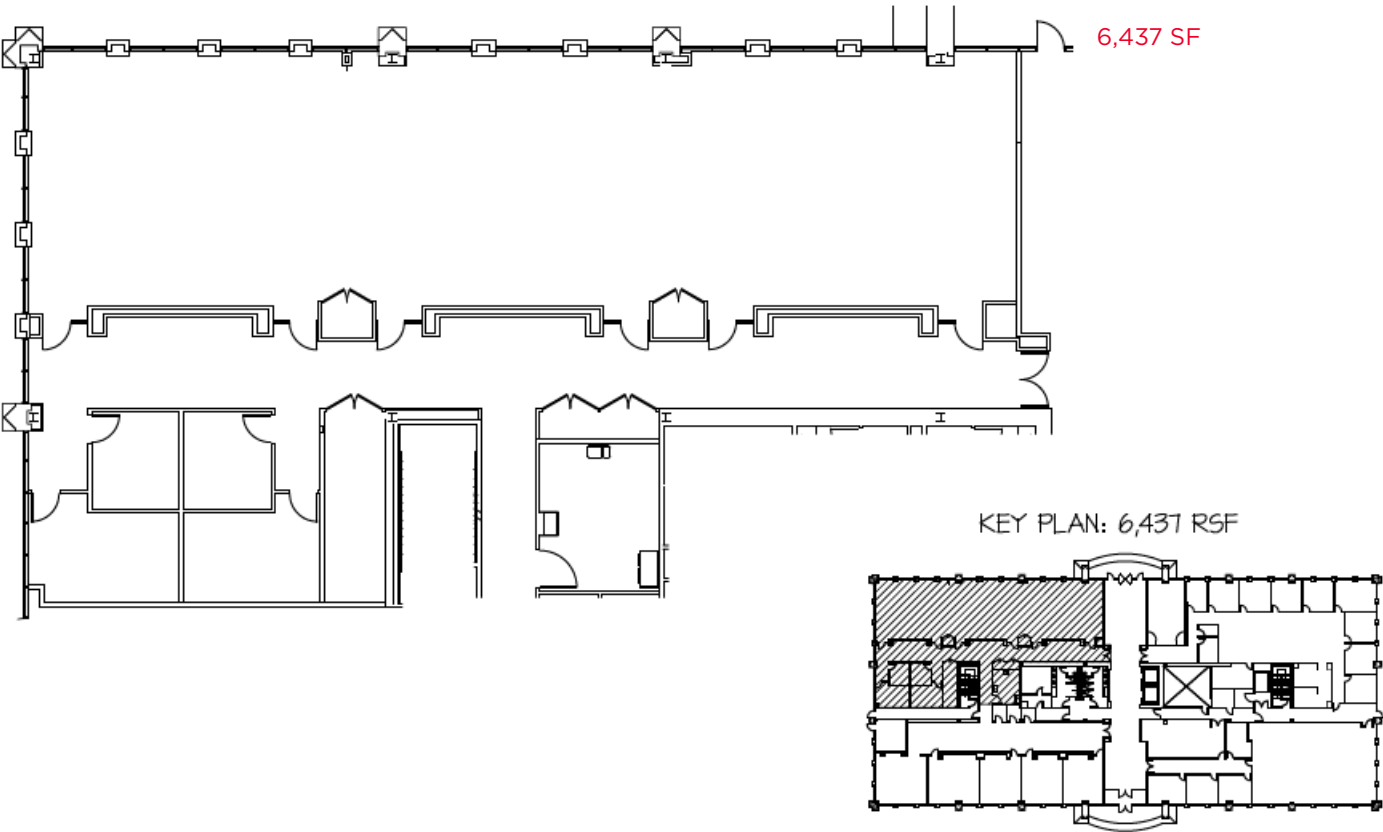


# FLOOR PLANS

SUITE 125 AVAILABLE

6,437 SF

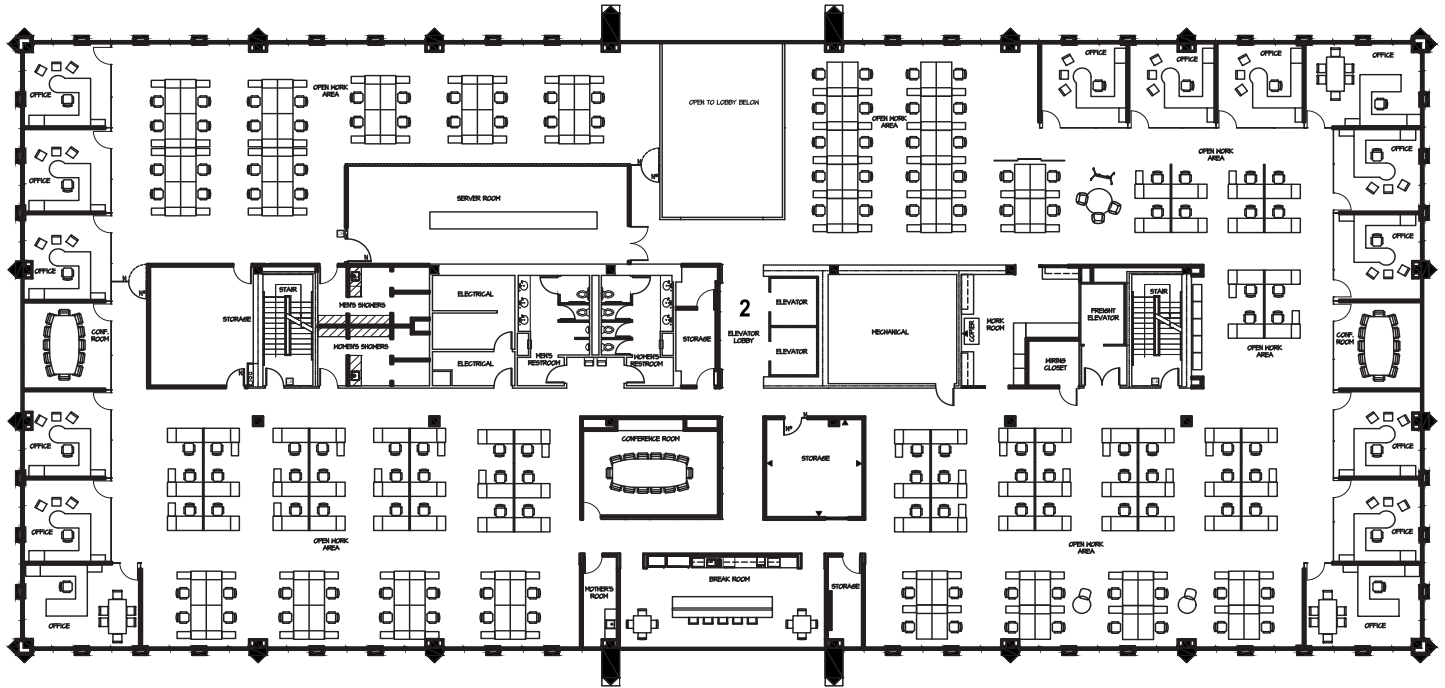
KEY PLAN: 6,437 RSF



# FLOOR PLANS

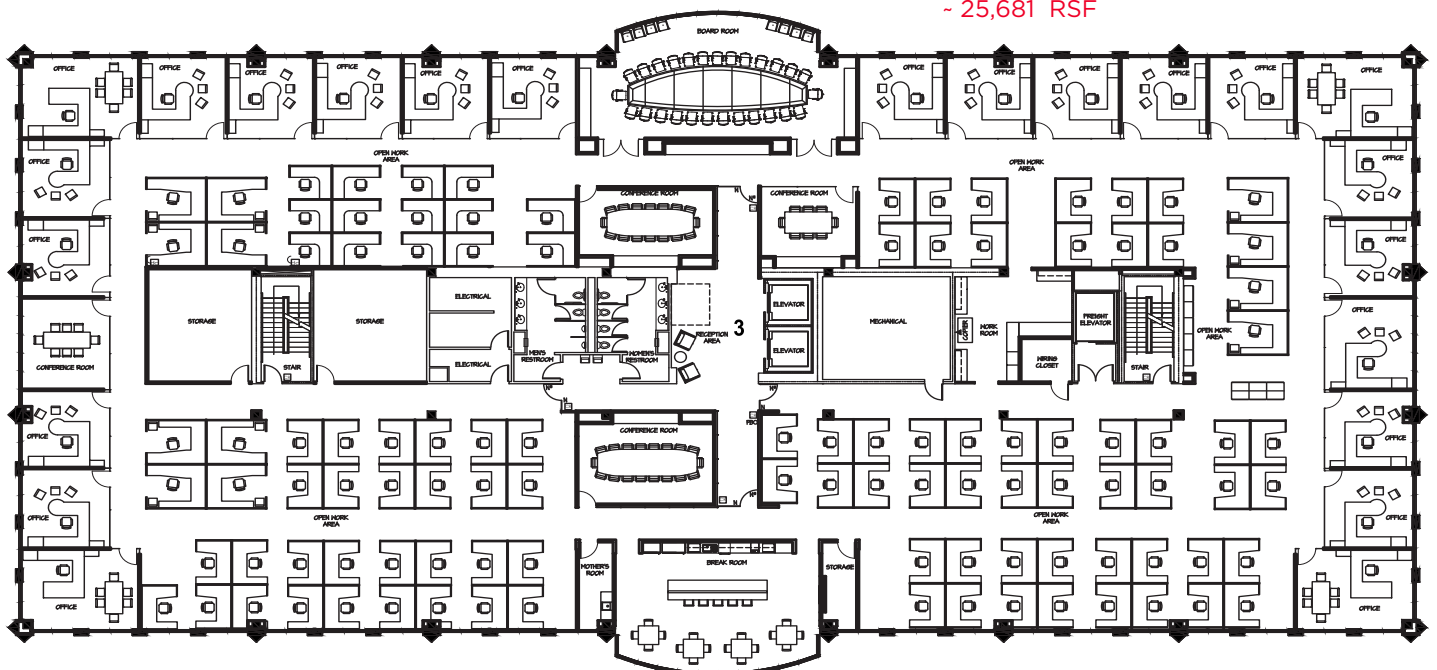
ENTIRE 2ND FLOOR AVAILABLE

~26,681 RSF



ENTIRE 3RD FLOOR AVAILABLE

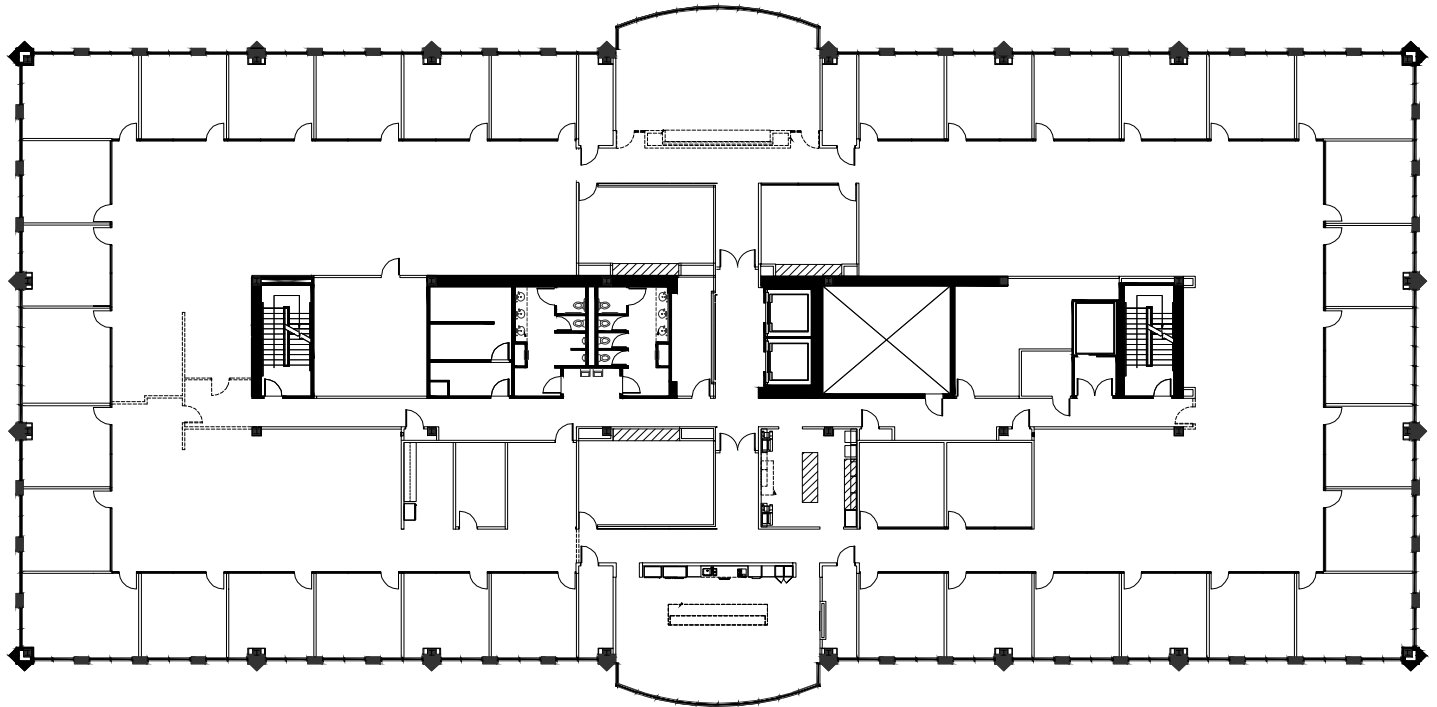
~ 25,681 RSF



# FLOOR PLANS

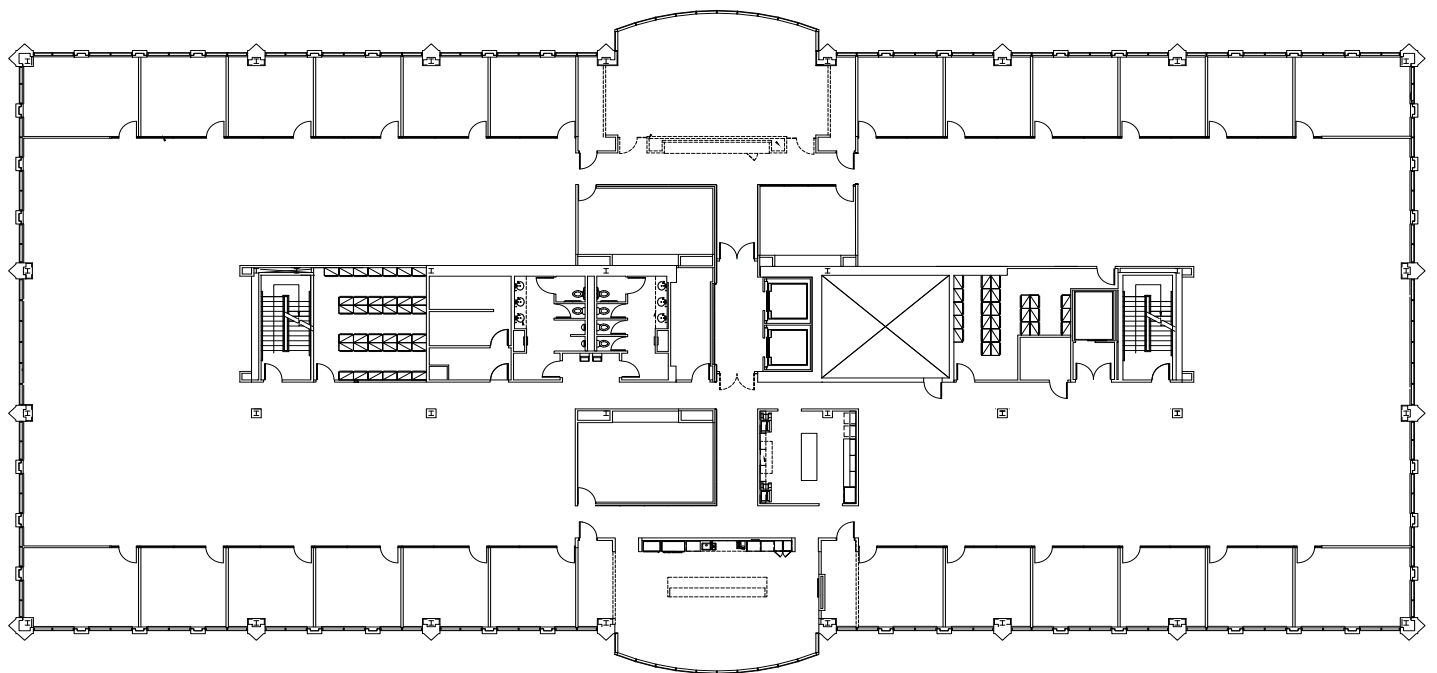
ENTIRE 4TH FLOOR AVAILABLE

~26,225 SF



ENTIRE 5TH FLOOR AVAILABLE

~ 26,226 SF





**Kent Honeycutt**  
Senior Director  
+1 919 791 2109  
[kent.honeycutt@cushwake.com](mailto:kent.honeycutt@cushwake.com)



1 Fenton Main St, Ste 480,  
Cary, NC 27511  
+1 919 789 4255



©2025 Cushman & Wakefield. All rights reserved. The information contained in this communication is strictly confidential. This information has been obtained from sources believed to be reliable but has not been verified. NO WARRANTY OR REPRESENTATION, EXPRESS OR IMPLIED, IS MADE AS TO THE CONDITION OF THE PROPERTY (OR PROPERTIES) REFERENCED HEREIN OR AS TO THE ACCURACY OR COMPLETENESS OF THE INFORMATION CONTAINED HEREIN, AND SAME IS SUBMITTED SUBJECT TO ERRORS, OMISSIONS, CHANGE OF PRICE, RENTAL OR OTHER CONDITIONS, WITHDRAWAL WITHOUT NOTICE, AND TO ANY SPECIAL LISTING CONDITIONS IMPOSED BY THE PROPERTY OWNER(S). ANY PROJECTIONS, OPINIONS OR ESTIMATES ARE SUBJECT TO UNCERTAINTY AND DO NOT SIGNIFY CURRENT OR FUTURE PROPERTY PERFORMANCE.