

ABBY LANE HEALTH CENTRE

15331 16th Avenue
Surrey, BC

FOR LEASE
MEDICAL/OFFICE SPACE





Property Overview

Abby Lane Health Centre, located in the heart of Semiahmoo Town Centre, provides top-tier medical office space. It is directly connected to 183 strata condominiums and rental units within the residences of Abby Lane. This highly desirable medical office building is just 500 meters from Peace Arch Hospital and is surrounded by retirement homes, care facilities, and residential neighborhoods. The area is experiencing significant redevelopment, blending commercial and residential spaces for a vibrant community.



Available Space

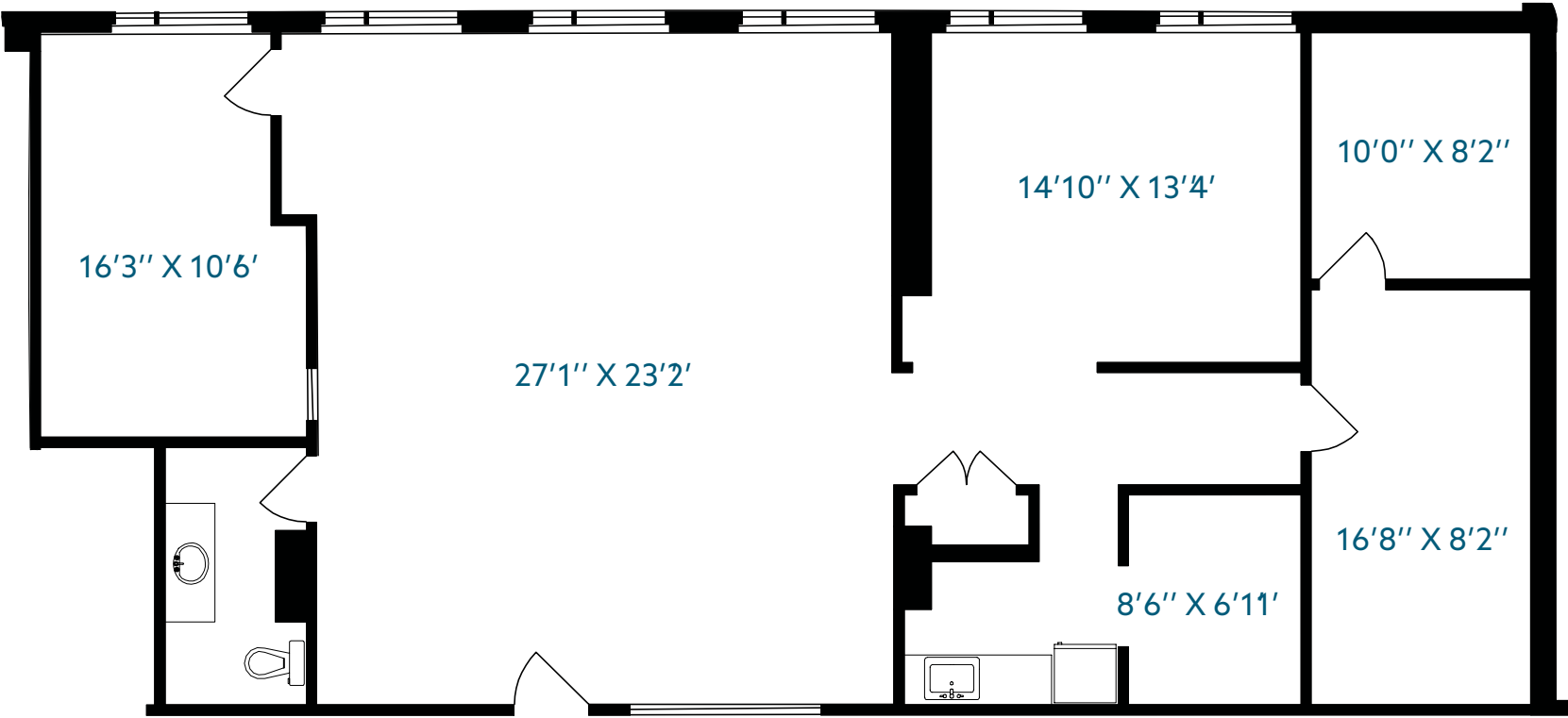
Unit 102	1,603 SF
Unit 305	756 SF
Unit 306	996 SF
Unit 307	839 SF
Unit 308	694 SF

Basic Rent	Contact Listing Agents
Additional Rent	\$19.35 PSF
Parking	1 -2 stalls per 1,000 SF

ABBY LANE HEALTH CENTRE

15331 16th Avenue, Surrey, BC

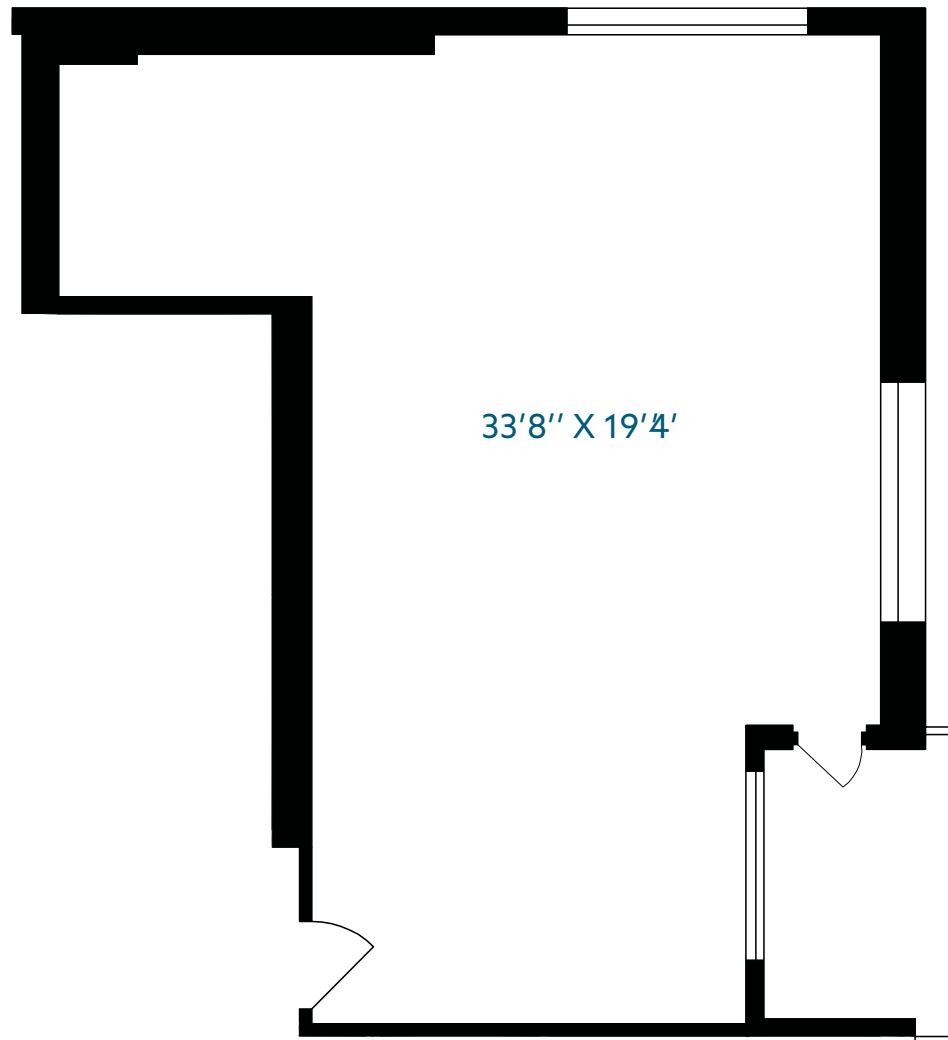
UNIT 102 | 1,603 SF



ABBY LANE HEALTH CENTRE

15331 16th Avenue, Surrey, BC

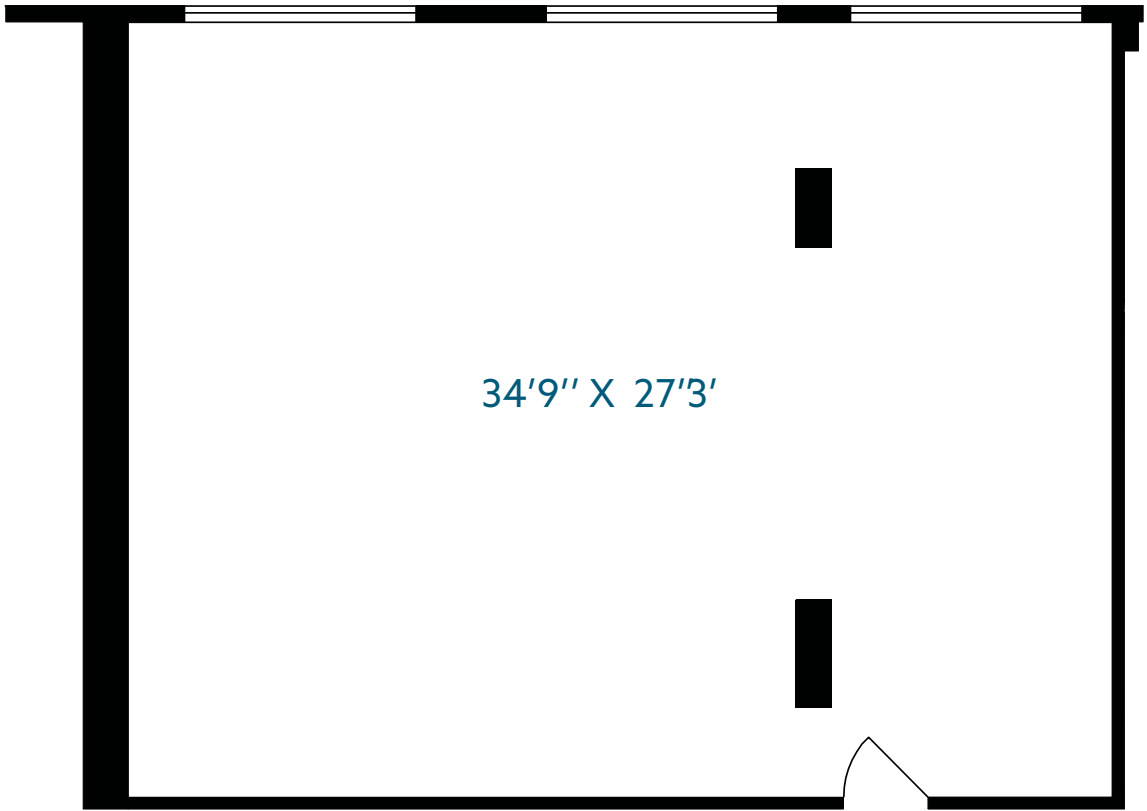
UNIT 305 | 746 SF



ABBY LANE HEALTH CENTRE

15331 16th Avenue, Surrey, BC

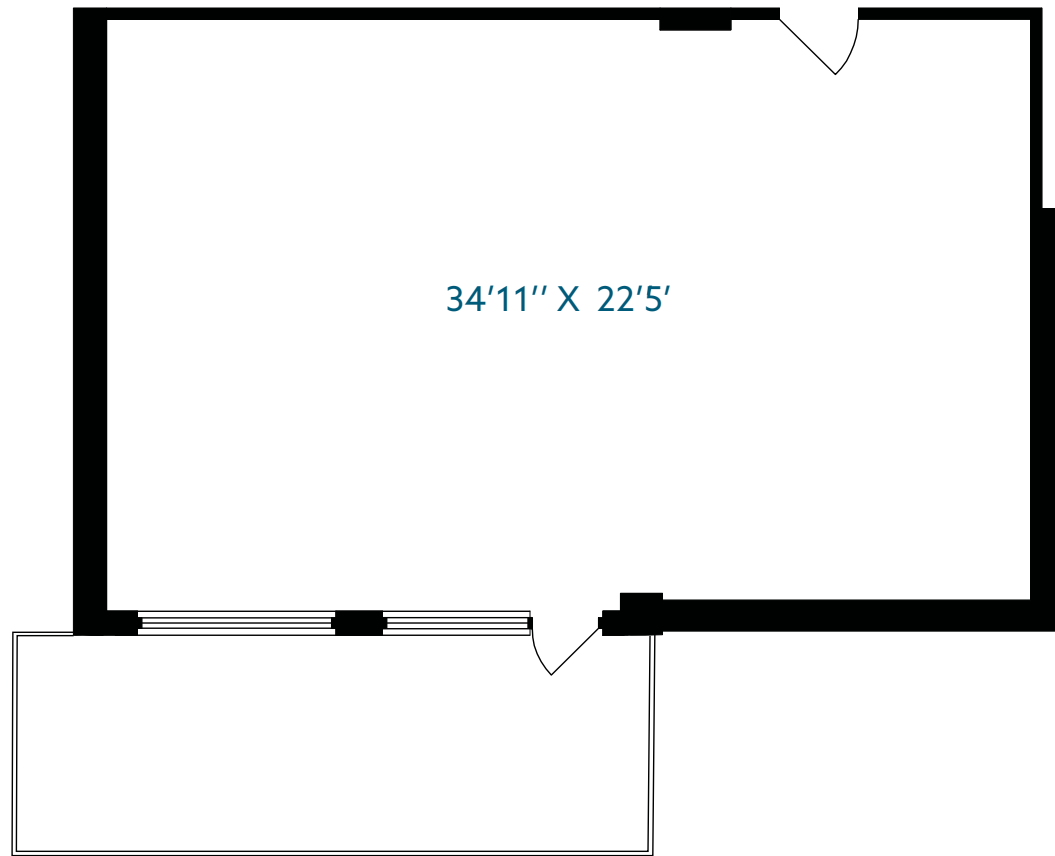
UNIT 306 | 996 SF



ABBY LANE HEALTH CENTRE

15331 16th Avenue, Surrey, BC

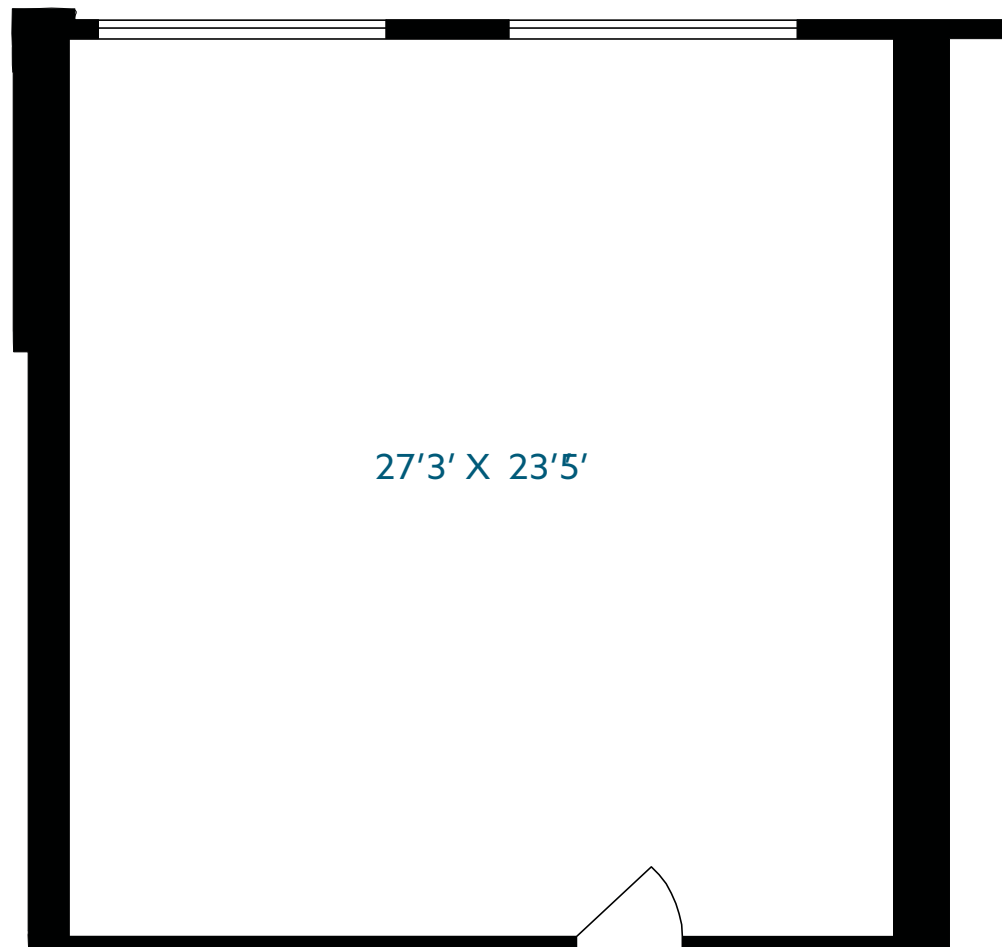
UNIT 307 | 839 SF

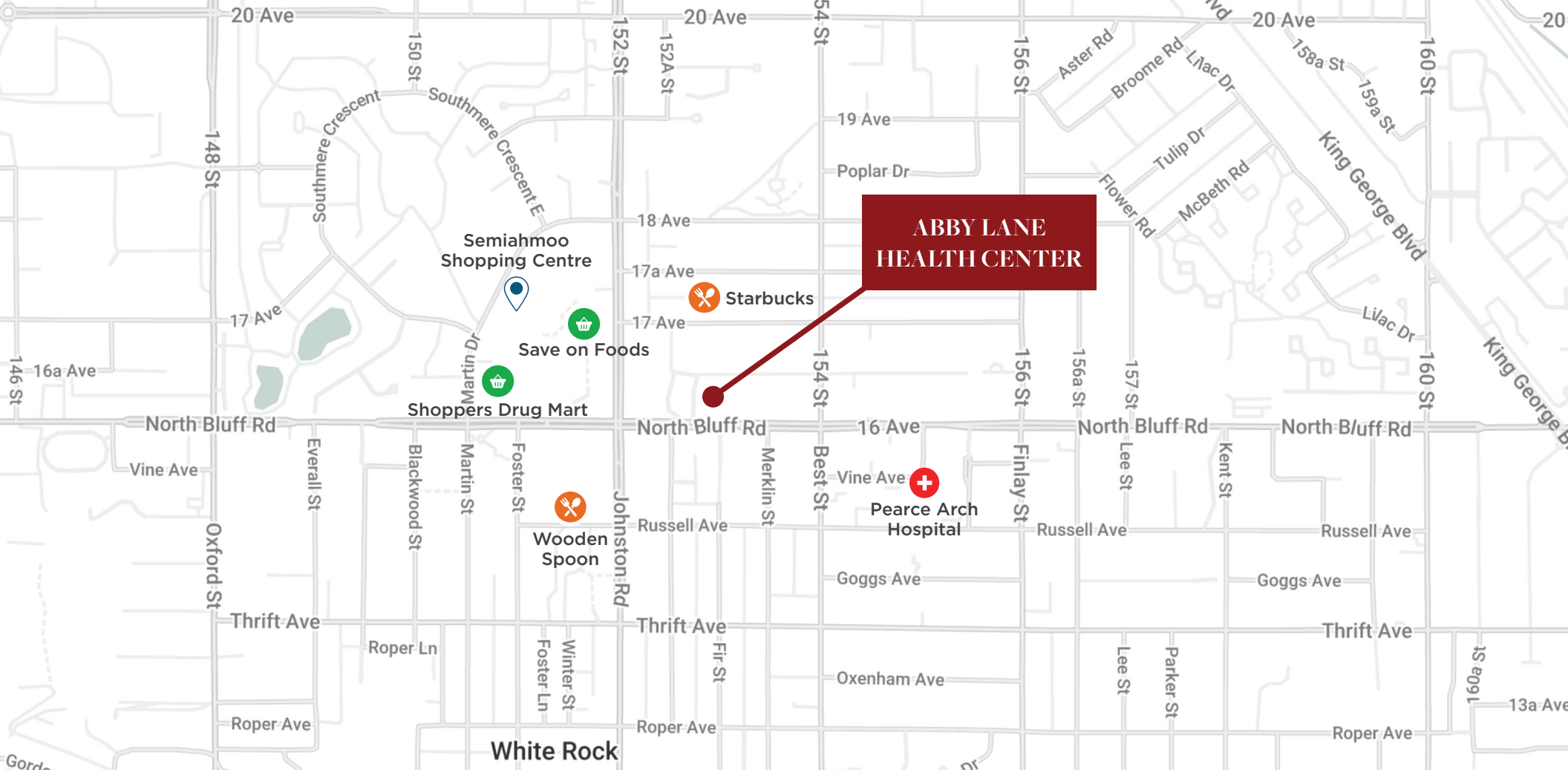


ABBY LANE HEALTH CENTRE

15331 16th Avenue, Surrey, BC

UNIT 308 | 694 SF





Accessibility Score



79

Walk Score



72

Bike Score



59

Transit Score

Notable Attributes

- On-site services: pharmacy, physiotherapist, and medical laboratory
- A daily destination for residents of nearby retirement and care homes
- Ample public parking available for visitors and clients
- 11-minute drive to the Peace Arch border crossing
- Conveniently located at the intersection between Surrey and White Rock
- Close proximity to Semiahmoo Shopping Centre

ABBY LANE HEALTH CENTRE

15331 16th Avenue
Surrey, BC

CONTACT

Cody Buchamer

Personal Real Estate Corporation
Associate Vice President
+1 604 608 5999
cody.buchamer@cushwake.com

Ethan Regan

Associate
+1 604 902 4649
ethan.regan@cushwake.com

700 West Georgia Street, Suite 1200
Toronto Dominion Tower, Pacific Centre
Vancouver, British Columbia V7Y 1A1
+1 604 683 3111
cushmanwakefield.com

©2024 Cushman & Wakefield. All rights reserved. The information contained in this communication is strictly confidential. This information has been obtained from sources believed to be reliable but has not been verified. NO WARRANTY OR REPRESENTATION, EXPRESS OR IMPLIED, IS MADE AS TO THE CONDITION OF THE PROPERTY (OR PROPERTIES) REFERENCED HEREIN OR AS TO THE ACCURACY OR COMPLETENESS OF THE INFORMATION CONTAINED HEREIN, AND SAME IS SUBMITTED SUBJECT TO ERRORS, OMISSIONS, CHANGE OF PRICE, RENTAL OR OTHER CONDITIONS, WITHDRAWAL WITHOUT NOTICE, AND TO ANY SPECIAL LISTING CONDITIONS IMPOSED BY THE PROPERTY OWNER(S). ANY PROJECTIONS, OPINIONS OR ESTIMATES ARE SUBJECT TO UNCERTAINTY AND DO NOT SIGNIFY CURRENT OR FUTURE PROPERTY PERFORMANCE.

