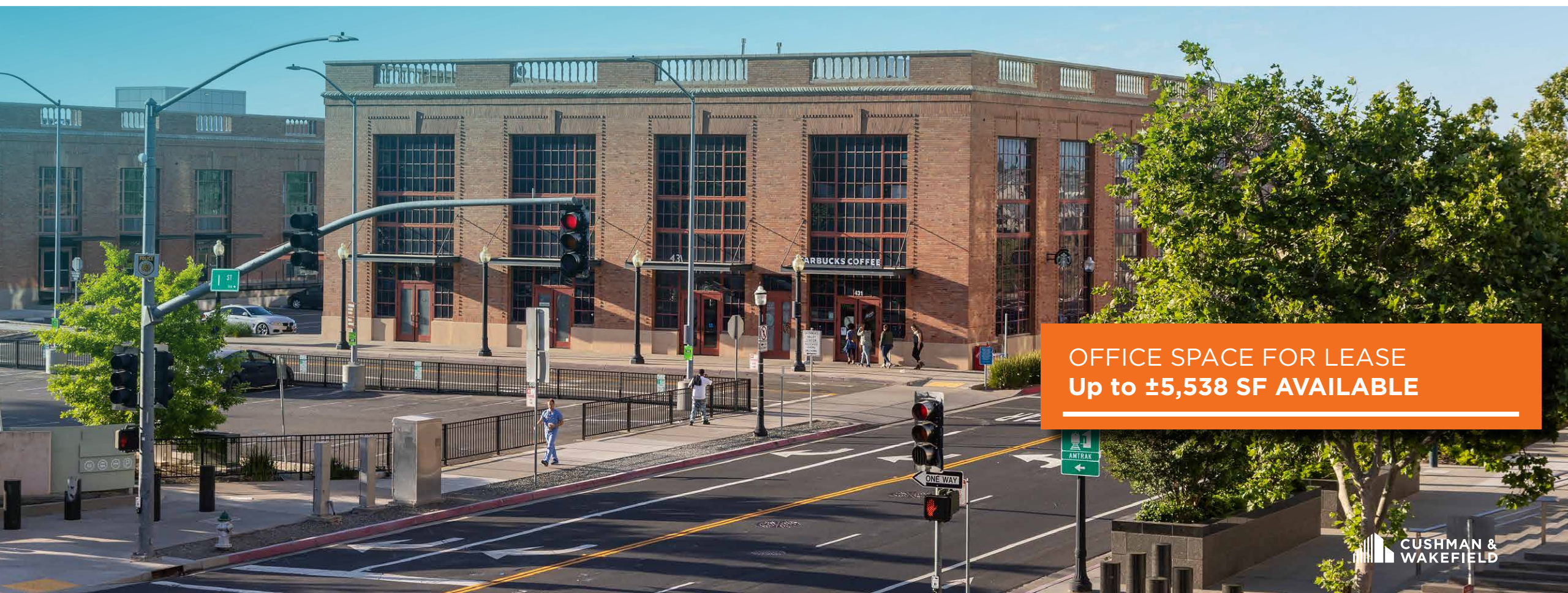


# 431 I STREET

SACRAMENTO CA



OFFICE SPACE FOR LEASE  
Up to ±5,538 SF AVAILABLE



## Property Highlights



Close to downtown commons and Golden 1 Center



Walking distance to Amtrak station



City parking available



Renovated in 2005 while maintaining its classic architecture



Open floor plan in historic building

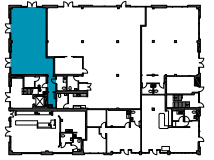


Near all major Sacramento freeways



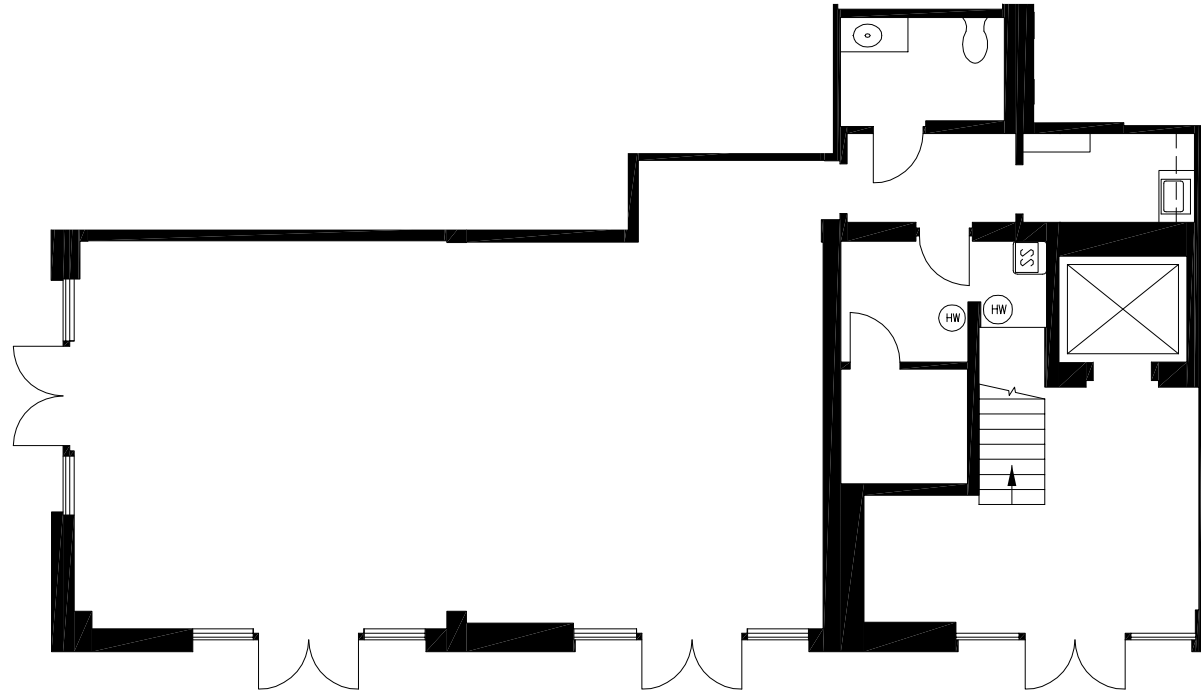
# 431 I STREET

SACRAMENTO CA



**SUITE 108**  
**± 1,393 RSF**

OFFICE SPACE



## OFFICE

### SPENCER NIELSEN

Director  
+1 916 288 4531  
CA LIC #01964163  
[spencer.nielsen@cushwake.com](mailto:spencer.nielsen@cushwake.com)

### CUSHMAN & WAKEFIELD

400 Capitol Mall, Suite 1800  
Sacramento, CA 95814  
+1 916 288 4800



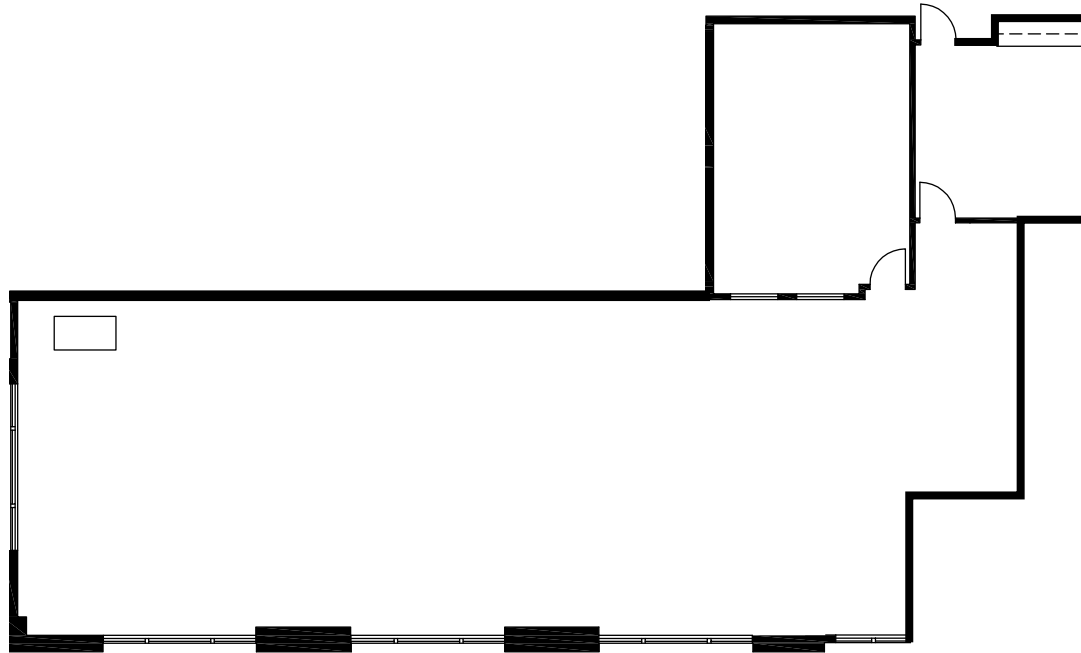
# 431 I STREET

SACRAMENTO CA



**SUITE 200**  
**± 3,893 RSF**

OFFICE SPACE



## OFFICE

### SPENCER NIELSEN

Director

+1 916 288 4531

CA LIC #01964163

[spencer.nielsen@cushwake.com](mailto:spencer.nielsen@cushwake.com)

### CUSHMAN & WAKEFIELD

400 Capitol Mall, Suite 1800

Sacramento, CA 95814

+1 916 288 4800



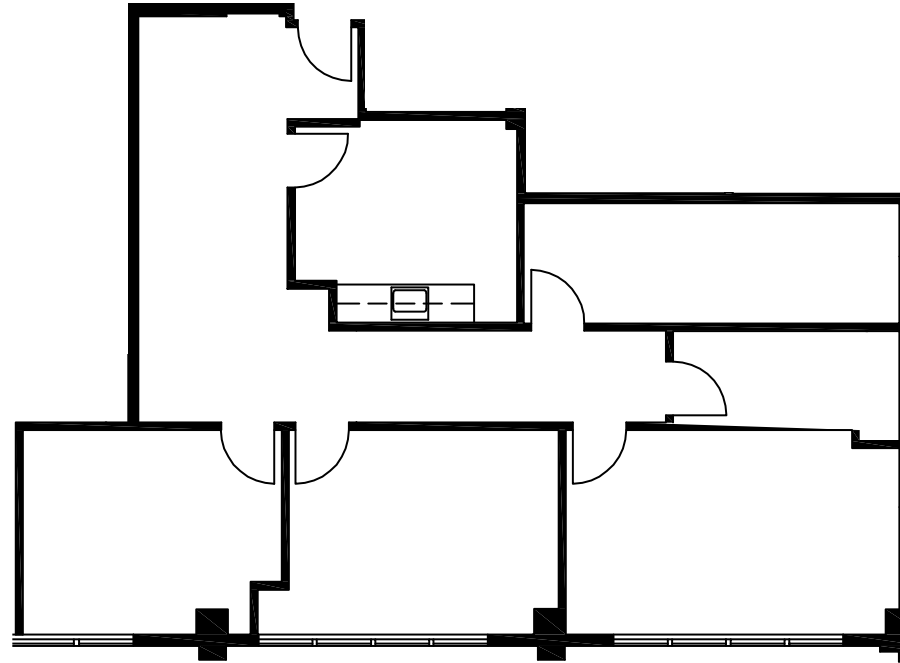
# 431 I STREET

SACRAMENTO CA



**SUITE 203**  
**± 1,645 RSF**

OFFICE SPACE



## OFFICE

### SPENCER NIELSEN

Director

+1 916 288 4531

CA LIC #01964163

[spencer.nielsen@cushwake.com](mailto:spencer.nielsen@cushwake.com)

### CUSHMAN & WAKEFIELD

400 Capitol Mall, Suite 1800

Sacramento, CA 95814

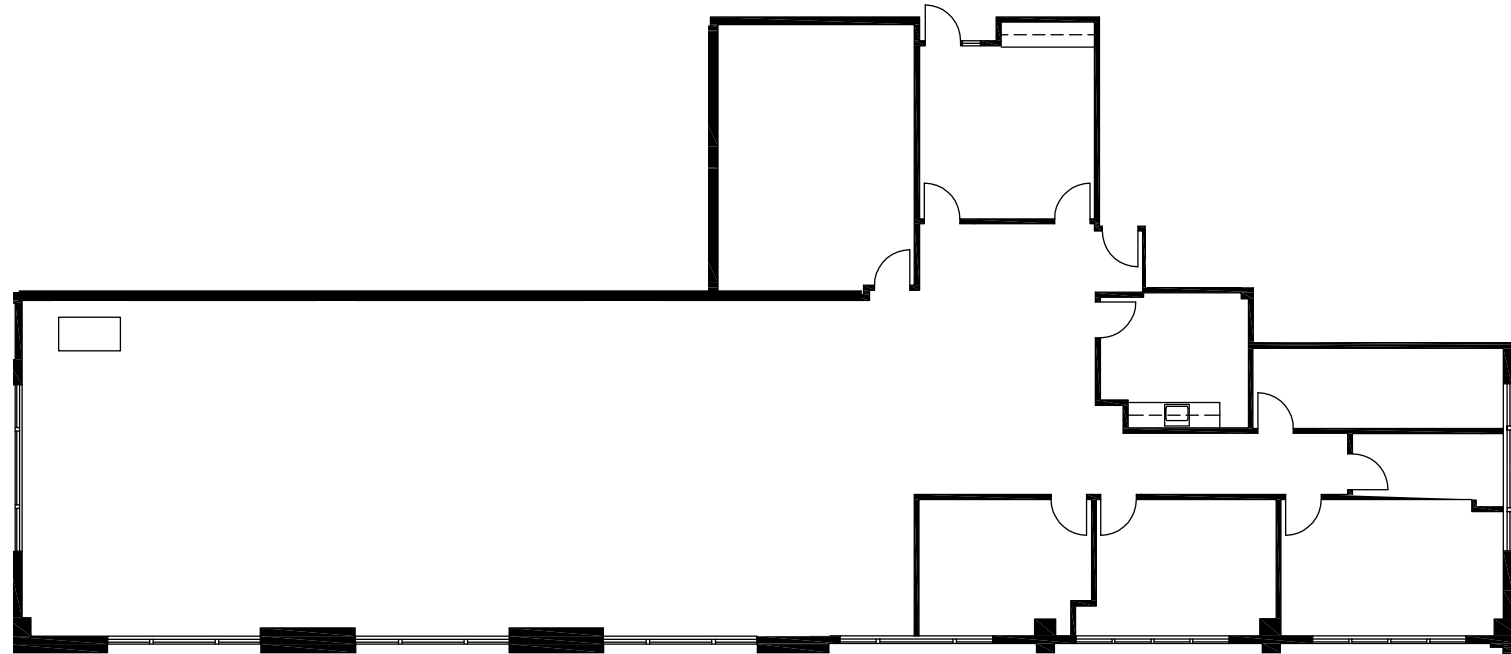
+1 916 288 4800





## SUITE 200 + 203 ± 5,538 RSF

OFFICE SPACE



### OFFICE

#### SPENCER NIELSEN

Director

+1 916 288 4531

CA LIC #01964163

[spencer.nielsen@cushwake.com](mailto:spencer.nielsen@cushwake.com)

#### CUSHMAN & WAKEFIELD

400 Capitol Mall, Suite 1800

Sacramento, CA 95814

+1 916 288 4800







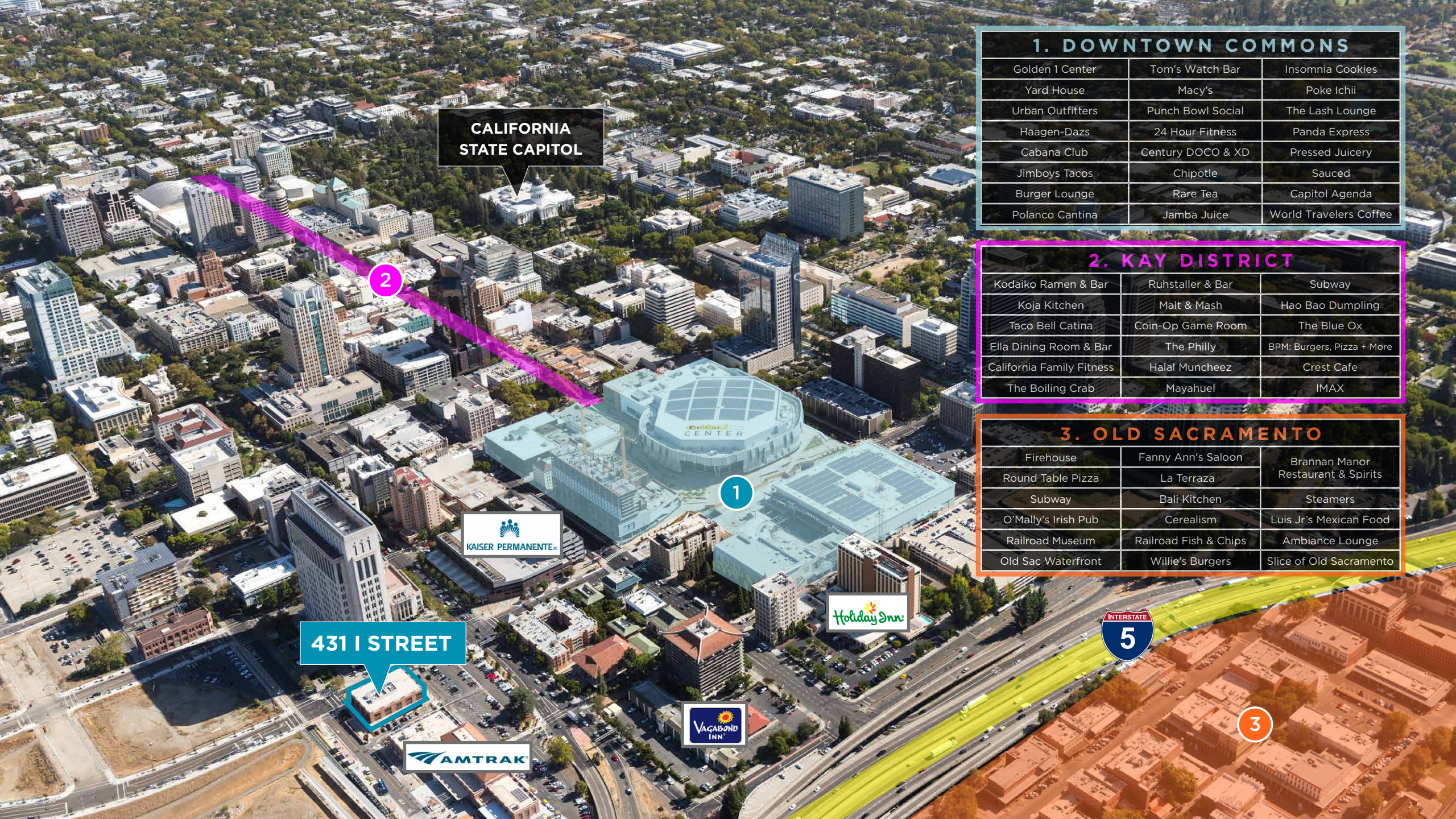


# CULTURE

As the nation's farm-to-fork capital, Sacramento offers many local dining and drinking options that highlight the region's bountiful harvest. It is also close to some of the state's most highly desired destinations including San Francisco, Lake Tahoe, Napa Valley and Yosemite National Park.







CALIFORNIA  
STATE CAPITOL

2

1

431 I STREET

3

## 1. DOWNTOWN COMMONS

Golden 1 Center	Tom's Watch Bar	Insomnia Cookies
Yard House	Macy's	Poke Ichii
Urban Outfitters	Punch Bowl Social	The Lash Lounge
Haagen-Dazs	24 Hour Fitness	Panda Express
Cabana Club	Century DOCO & XD	Pressed Juicery
Jimboys Tacos	Chipotle	Sauced
Burger Lounge	Rare Tea	Capitol Agenda
Polanco Cantina	Jamba Juice	World Travelers Coffee

## 2. KAY DISTRICT

Kodaiko Ramen & Bar	Ruhstaller & Bar	Subway
Kojo Kitchen	Malt & Mash	Hao Bao Dumpling
Taco Bell Catina	Coin-Op Game Room	The Blue Ox
Ella Dining Room & Bar	The Philly	BPM: Burgers, Pizza + More
California Family Fitness	Halal Muncheez	Crest Cafe
The Boiling Crab	Mayahuel	IMAX

## 3. OLD SACRAMENTO

Firehouse	Fanny Ann's Saloon	Brannan Manor Restaurant & Spirits
Round Table Pizza	La Terraza	Steamers
Subway	Bali Kitchen	Luis Jr's Mexican Food
O'Mally's Irish Pub	Cerealism	Ambiance Lounge
Railroad Museum	Railroad Fish & Chips	Slice of Old Sacramento
Old Sac Waterfront	Willie's Burgers	





## CONTACT US:

### OFFICE

#### SPENCER NIELSEN

Director

+1 916 288 4531

CA LIC #01964163

spencer.nielsen@cushwake.com

#### CUSHMAN & WAKEFIELD

400 Capitol Mall, Suite 1800

Sacramento, CA 95814

+1 916 288 4800



# 431 STREET

## SACRAMENTO CA

©2024 Cushman & Wakefield. All rights reserved. The information contained in this communication is strictly confidential. This information has been obtained from sources believed to be reliable but has not been verified. No warranty or representation, express or implied, is made as to the condition of the property (or properties) referenced herein or as to the accuracy or completeness of the information contained herein, and same is submitted subject to errors, omissions, change of price, rental or other conditions, withdrawal without notice, and to any special listing conditions imposed by the property owner(s). Any projections, opinions or estimates are subject to uncertainty and do not signify current or future property performance.