



OFFICE FOR  
SUBLEASE

901

King Street

West

UP TO  
29,168 sf





### Availability:

Suite 302/303: 5,128 sf

Suite 520: 4,444 sf

Suite 701: 19,596 sf

**TOTAL : 29,168 sf**

Occupancy: 60 – 90 Days

Net asking rate: Negotiable

Term: Flexible, up to February 27, 2023

Additional Rent: \$23.77 (2021 Est.)

### Highlights

- Completely 'turnkey' sublease opportunity in the heart of King West
- High ceilings and excellent natural light
- Furniture potentially available



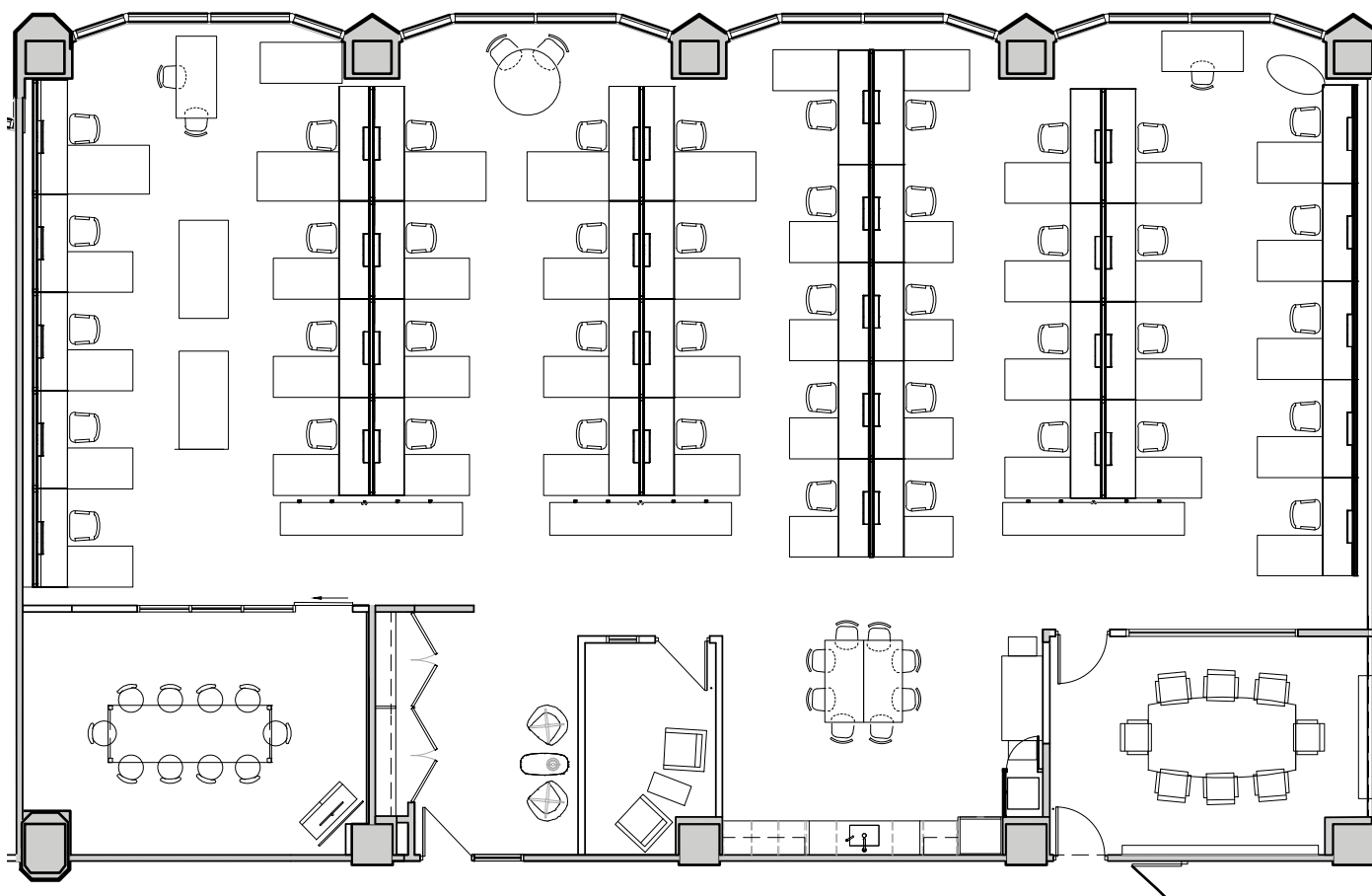
**OFFICE FOR  
SUBLEASE**

**901**  
King Street  
**West**

UP TO  
**29,168 sf**

# LEVEL 3 | FLOORPLAN

# 5,128 SF



CUSHMAN &  
WAKEFIELD

OFFICE FOR  
SUBLEASE

901  
King Street  
West

UP TO  
29,168 sf



# LEVEL 3 | PHOTOS



CUSHMAN &  
WAKEFIELD

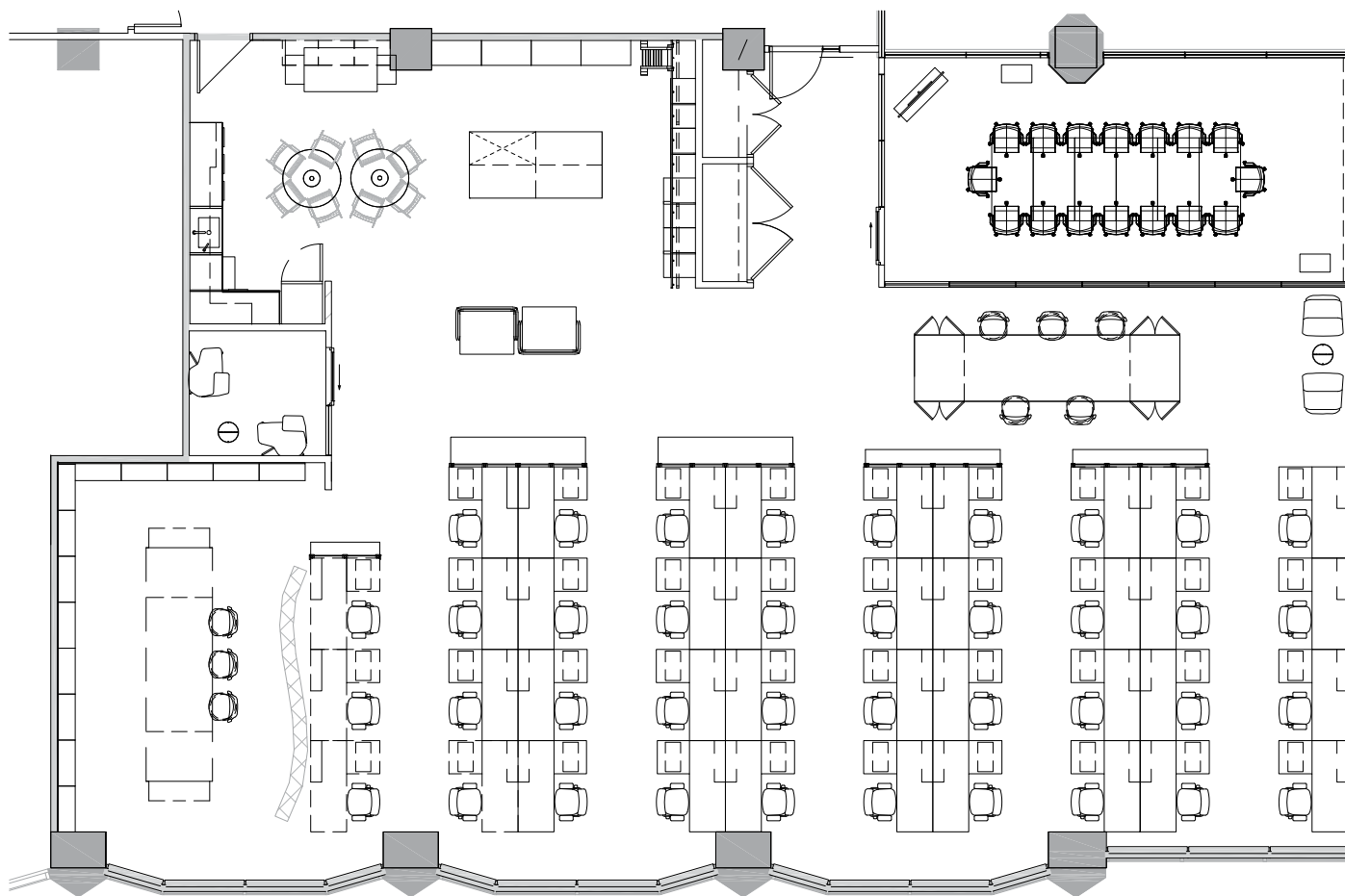
OFFICE FOR  
SUBLEASE

901  
King Street  
West

UP TO  
29,168 sf

# LEVEL 5 | FLOORPLAN

# 4,444 SF



CUSHMAN &  
WAKEFIELD

OFFICE FOR  
SUBLEASE

901  
King Street  
West

UP TO  
29,168 sf



# LEVEL 5 | PHOTOS



 CUSHMAN &  
WAKEFIELD

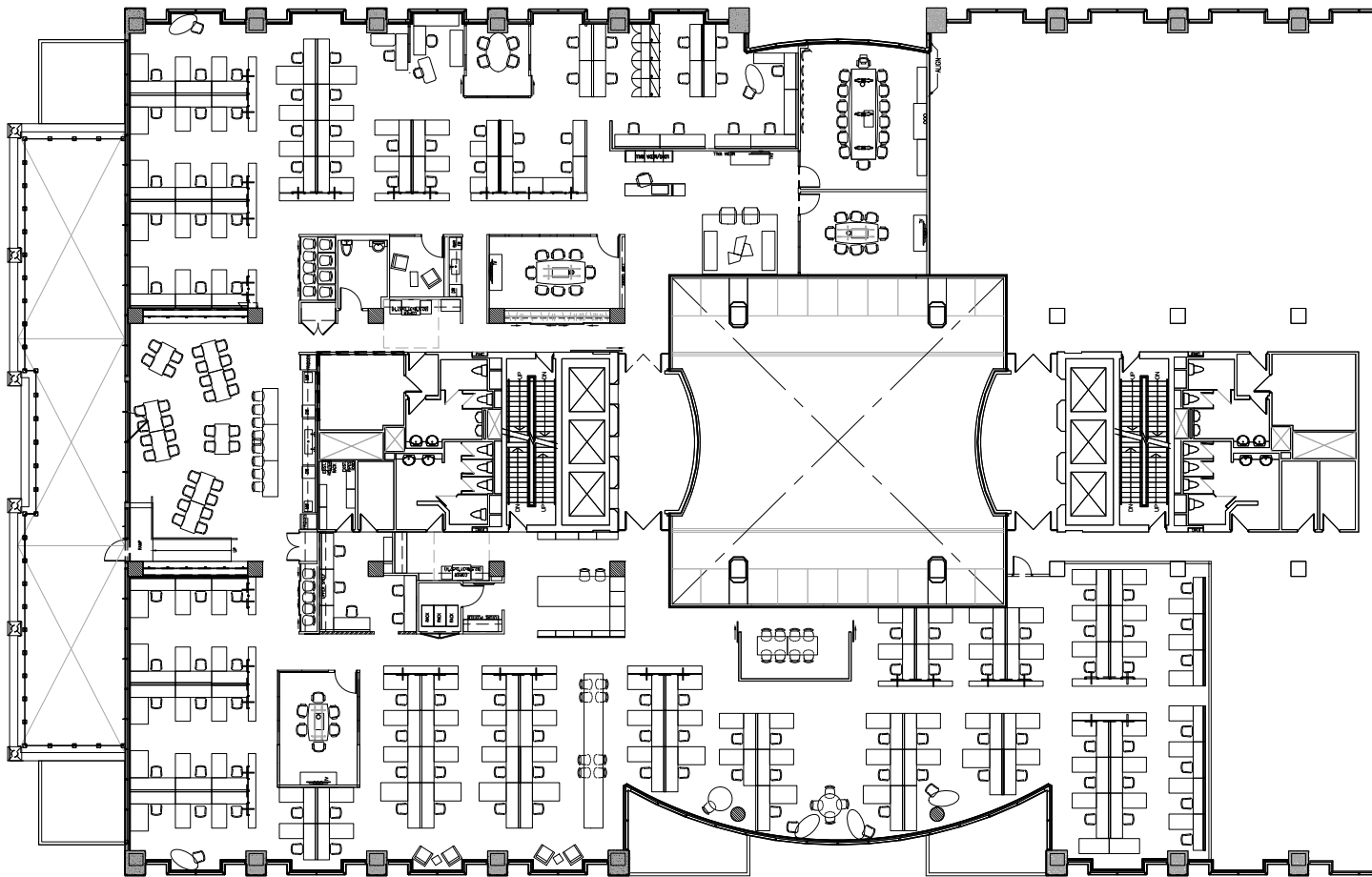
OFFICE FOR  
SUBLEASE

901  
King Street  
West

UP TO  
29,168 sf

# LEVEL 7 | FLOORPLAN

# 19,596 SF



CUSHMAN &  
WAKEFIELD

OFFICE FOR  
SUBLEASE

901  
King Street  
West

UP TO  
29,168 sf



# LEVEL 7 | PHOTOS



 CUSHMAN &  
WAKEFIELD

OFFICE FOR  
SUBLEASE

901  
King Street  
West

UP TO  
29,168 sf



# AMENITIES



**CUSHMAN & WAKEFIELD**

**OFFICE FOR  
SUBLEASE**

**901**  
King Street  
**West**



## OFFICE FOR SUBLEASE

# 901

King Street

# West

UP TO  
**29,168 sf**

**MICHAEL SCACE\***  
Executive Vice President  
**416 359 2456**  
[michael.scace@cushwake.com](mailto:michael.scace@cushwake.com)

**ALAN RAWN\***  
Senior Vice President  
**416 359 2440**  
[alan.rawn@cushwake.com](mailto:alan.rawn@cushwake.com)

**LAUREN LUCHINI\***  
Associate Vice President  
**416 359 2553**  
[lauren.luchini@cushwake.com](mailto:lauren.luchini@cushwake.com)



**161 Bay Street, Suite 1500**  
**Toronto ON M5J 2S1**  
[cushmanwakefield.com](http://cushmanwakefield.com)

©2021 Cushman & Wakefield ULC, Brokerage. All rights reserved. The information contained in this communication is strictly confidential. This information has been obtained from sources believed to be reliable but has not been verified. NO WARRANTY OR REPRESENTATION, EXPRESS OR IMPLIED, IS MADE AS TO THE CONDITION OF THE PROPERTY (OR PROPERTIES) REFERENCED HEREIN OR AS TO THE ACCURACY OR COMPLETENESS OF THE INFORMATION CONTAINED HEREIN, AND SAME IS SUBMITTED SUBJECT TO ERRORS, OMISSIONS, CHANGE OF PRICE, RENTAL OR OTHER CONDITIONS, WITHDRAWAL WITHOUT NOTICE, AND TO ANY SPECIAL LISTING CONDITIONS IMPOSED BY THE PROPERTY OWNER(S). ANY PROJECTIONS, OPINIONS OR ESTIMATES ARE SUBJECT TO UNCERTAINTY AND DO NOT SIGNIFY CURRENT OR FUTURE PROPERTY PERFORMANCE.

\*SALES REPRESENTATIVE