

GLENMORE BUSINESS PARK



550 - 71 AVENUE SE, 7710 - 5 STREET SE, 610 - 70 AVENUE SE, CALGARY, AB

\$18.00 PSF OF INDUCEMENTS FOR DEALS AT SUITE 206-210, 610 - 70 AVENUE SE

*CAN BE APPLIED TO RENT, MOVE ALLOWANCE, IMPROVEMENTS, ETC. IS AVAILABLE ON A 5 YEAR TERM WITH A \$10.00 PSF RENTAL RATE.

ABOUT THE PROPERTY

Welcome to **Glenmore Business Park**, a modern business hub strategically located off the intersection of Blackfoot Trail and Glenmore Trail. Surrounding amenities include Chinook Mall, Deerfoot Meadows, Calgary Farmers' Market South, and so much more. The site is equipped with top-notch infrastructure including high-speed fibre internet and ample parking, as well as easy access to transit stops. Flexible leasing options are available to accommodate businesses of all sizes and industries, from short-term leases to long-term commitments.

HIGHLIGHTS

- Exterior upgrades to all buildings
- 52,000 vehicles per day along Blackfoot Trail
- 12 minutes to Downtown Calgary and 20 minutes to the Calgary International Airport
- Zoning allowing for a wide variety of uses
- Surface and underground parking available (except for 610 70 Avenue SE, only surface available)
- Surrounded by excellent amenities
- Warehouse opportunities available in the park ranging from 2,700 sf to 24,497 sf
- 24/7 HVAC
- Furniture available

ABOUT THE LANDLORD

Dream Industrial is an innovative and customer-focused owner, operator, and developer of high-quality industrial properties. Dream Industrial invests in and manages over 71 million square feet of industrial assets in Canada, Europe, and the United States for over 1,500 occupiers operating across a diversity of sectors. The organization has a track record of delivering best-in-class modern industrial properties globally, with a development pipeline that includes approximately 6 million square feet of active projects and an additional 7 million square feet available for expansion or built-to-suit purposes.

Dream Industrial is part of the Dream Group of Companies and is managed by Dream Unlimited Corp. (TSX:DRM), a leading global real estate asset manager and institutional investor with \$27 billion in assets under management. Dream Industrial is comprised of Dream Industrial REIT (TSX: DIR.UN) as well as several private vehicles.

PROPERTY FEATURES

550 - 71 Avenue SE



Space Available: Suite 150: 11,046 sf
Suite 220: 5,908 sf
Suite 230: 5,472 sf **LEASED**

Availability: Immediately

Parking: 1 per 436 sf
Underground: \$75/
stall/month

Rates: Market

Op Costs: \$15.50 psf (2025)

Zoning DC (Now accepting medical uses, financial institutions, health care services, and more)

7710 - 5 Street SE



Space Available: Suite 210: 3,688 sf
Suite 212: 2,419 sf

Availability: Suite 210: Dec 1, 2025
Suite 212: Jan 1, 2026

Parking: 1 per 377 sf
Underground: \$75/
stall/month

Rates: Market

Op Costs: \$15.06 psf (2025)

Zoning I-G

610 - 70 Avenue SE



Space Available: Suite 203: 1,839 sf
Suite 206-210: 7,802 sf

Availability: Suite 203: 30 days' notice
Suite 206-210: Immediately

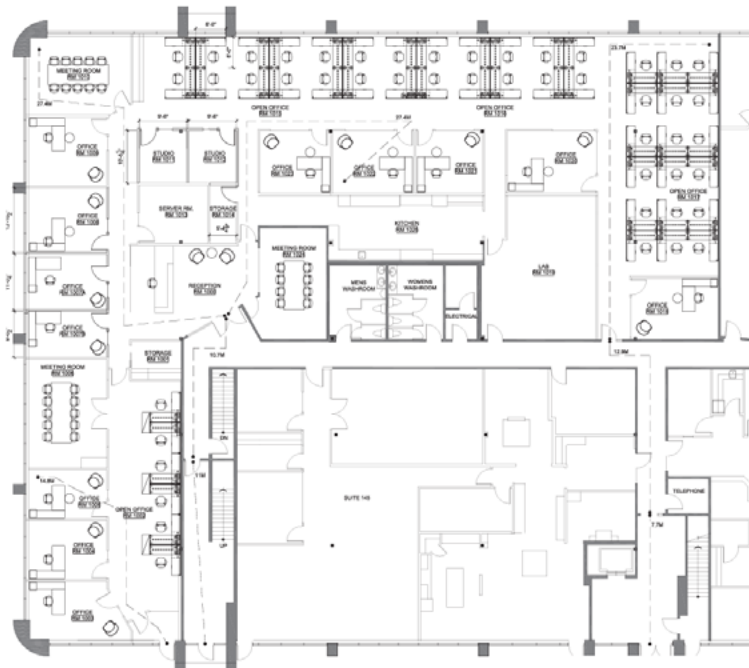
Parking: 1 per 350 sf

Rates: Market

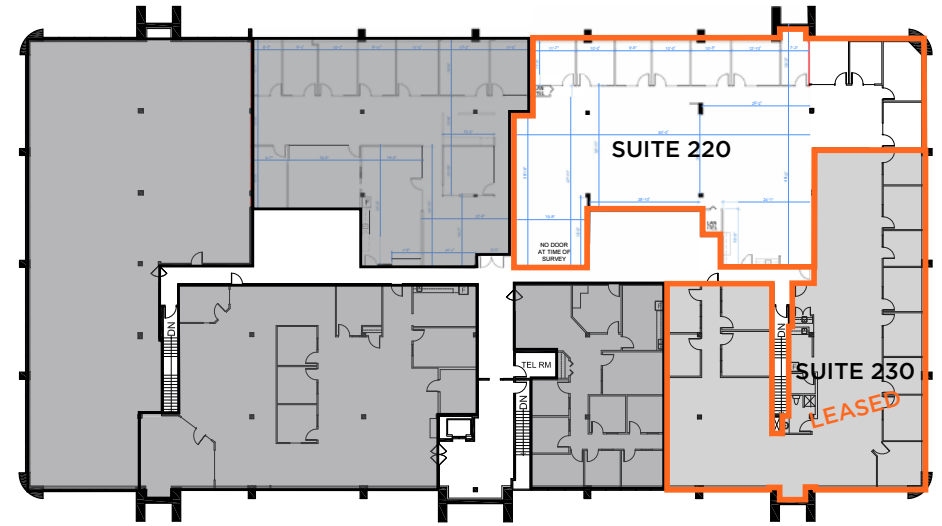
Op Costs: \$11.27 psf (2025)
*Includes utilities

Zoning I-G

FLOOR PLANS



SUITE 150: 11,046 SF
DEMISABLE TO +/-2,500 SF



SECOND FLOOR



SUITE 220: 5,908 SF
DEMISABLE TO +/- 2,000 SF

~~**SUITE 230: 5,472 SF**~~ **LEASED**

550-71 AVENUE SE

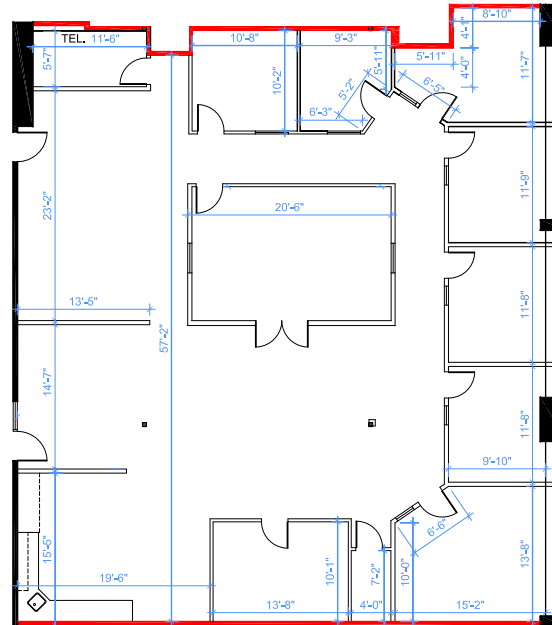
- Recently painted building exterior and common area upgrades
- Suite 150 comes fully furnished, Suite 220 is partially furnished
- Heated underground parking available
- Building offers handicap accessible ramp and convenient bike storage
- Short term leasing available



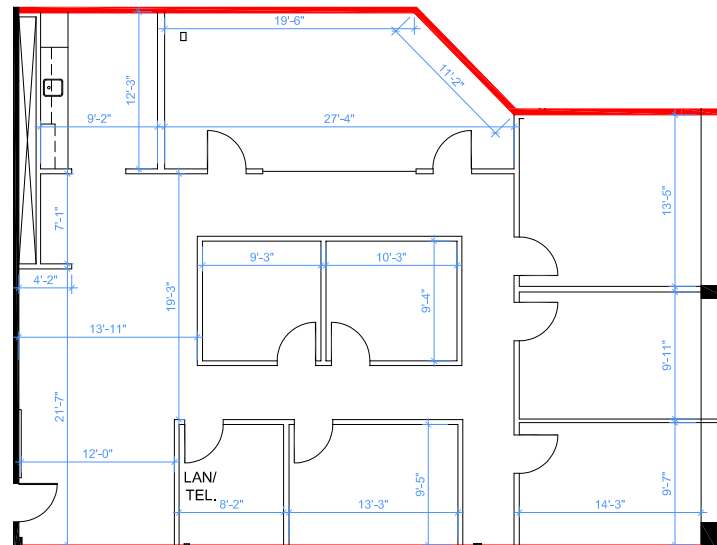
FLOOR PLANS

7710 - 5 STREET SE

- Major exterior building upgrade completed
- Short-term leasing available
- One year free underground parking with 5 year term

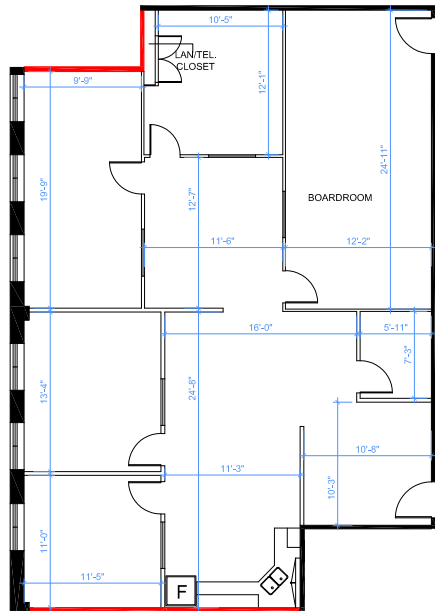


SUITE 210: 3,688 SF

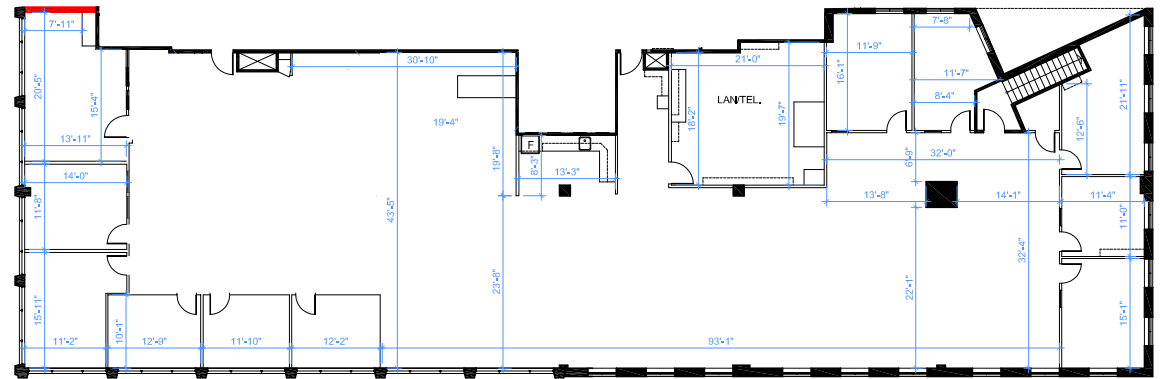


SUITE 212: 2,419 SF

FLOOR PLANS



SUITE 203: 1,839 SF



360° SUITE 206-210: 7,802 SF
*DEMISABLE

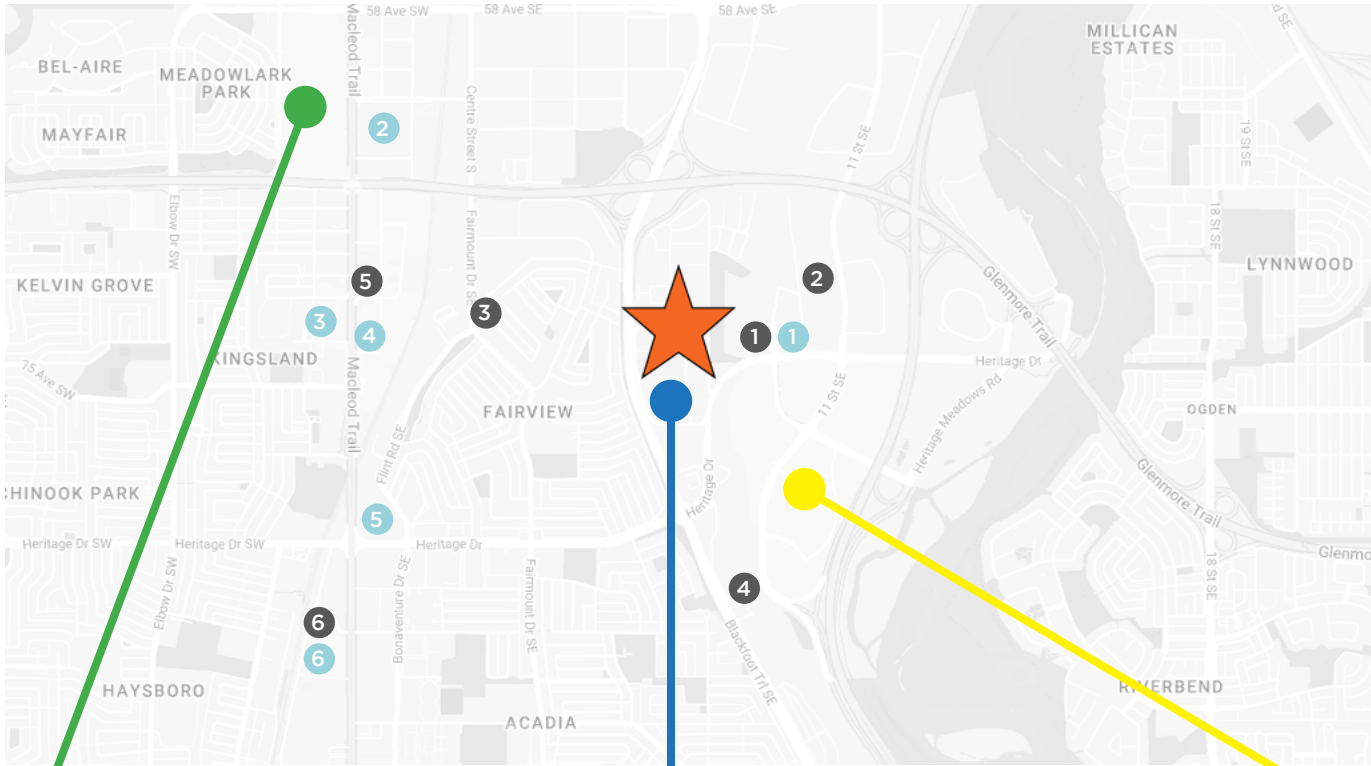
610-70 AVENUE SE

- Recent exterior and common area renovations
- Surface parking available, free of charge
- New carpet, paint, and lights
- Short term leasing available
- **\$18.00 PSF OF INDUCEMENTS FOR DEALS AT UNIT 206-210** - Can be applied to rent, move allowance, improvements, etc. is available on a 5 year term with a \$10.00 psf rental rate



AMENITY MAP

- 1 Tim Hortons, Boston Pizza, Noodle Box
- 2 Benny's Breakfast Bar, European Market Deli
- 3 Pita Queen, Beirut Street Food
- 4 Starbucks, Les Moulins La Fayette
- 5 Cactus Club, The Keg Steakhouse, Fat Burger
- 6 Tim Hortons, Big Catch Sushi Bar, Padmanadi



- 1 Costco, Costco Gas, Dollarama, Ashley HomeStore
- 2 The Home Depot, BMO, Staples, PetSmart
- 3 Marshalls, Supplement World, Sally Beauty
- 4 A Mart, Dollarama, Kalyna European Food and Deli
- 5 Winners, HomeSense, Dollar Tree
- 6 Calgary Co-op, Scotiabank, connectFirst

CF Chinook Centre

Calgary Farmer's Market

Deerfoot Meadows





**For more information
please contact:**

TRENT PETERSON

Vice President
Office Sales & Leasing
403 261 1101

trent.peterson@cushwake.com

DAVID LEES

Executive Vice President
Office Sales & Leasing
403 261 1102

david.lees@cushwake.com

ADAM RAMSAY

Executive Vice President
Office Sales & Leasing
403 261 1103

adam.ramsay@cushwake.com

CUSHMAN & WAKEFIELD ULC
250 6 Avenue SW, Suite 2400
Calgary, AB T2P 3H7 | Canada
cushmanwakefield.com

©2025 Cushman & Wakefield. All rights reserved. The information contained in this communication is strictly confidential. This information has been obtained from sources believed to be reliable but has not been verified. NO WARRANTY OR REPRESENTATION, EXPRESS OR IMPLIED, IS MADE AS TO THE CONDITION OF THE PROPERTY (OR PROPERTIES) REFERENCED HEREIN OR AS TO THE ACCURACY OR COMPLETENESS OF THE INFORMATION CONTAINED HEREIN, AND SAME IS SUBMITTED SUBJECT TO ERRORS, OMISSIONS, CHANGE OF PRICE, RENTAL OR OTHER CONDITIONS, WITHDRAWAL WITHOUT NOTICE, AND TO ANY SPECIAL LISTING CONDITIONS IMPOSED BY THE PROPERTY OWNER(S). ANY PROJECTIONS, OPINIONS OR ESTIMATES ARE SUBJECT TO UNCERTAINTY AND DO NOT SIGNIFY CURRENT OR FUTURE PROPERTY PERFORMANCE.