

OFFICE SPACE

215 9TH AVENUE SW  
CALGARY, ALBERTA

# PENN WEST PLAZA

## WEST TOWER

# FOR SUBLEASE

**CRAIG HULSMAN**

Executive Vice President

+1 403 305 8974

[craig.hulsman@cushwake.com](mailto:craig.hulsman@cushwake.com)

**JODY SICK**

Associate Vice President

+1 403 369 3111

[jody.sick@cushwake.com](mailto:jody.sick@cushwake.com)



**CUSHMAN &  
WAKEFIELD**





# SUBLEASE AVAILABLE



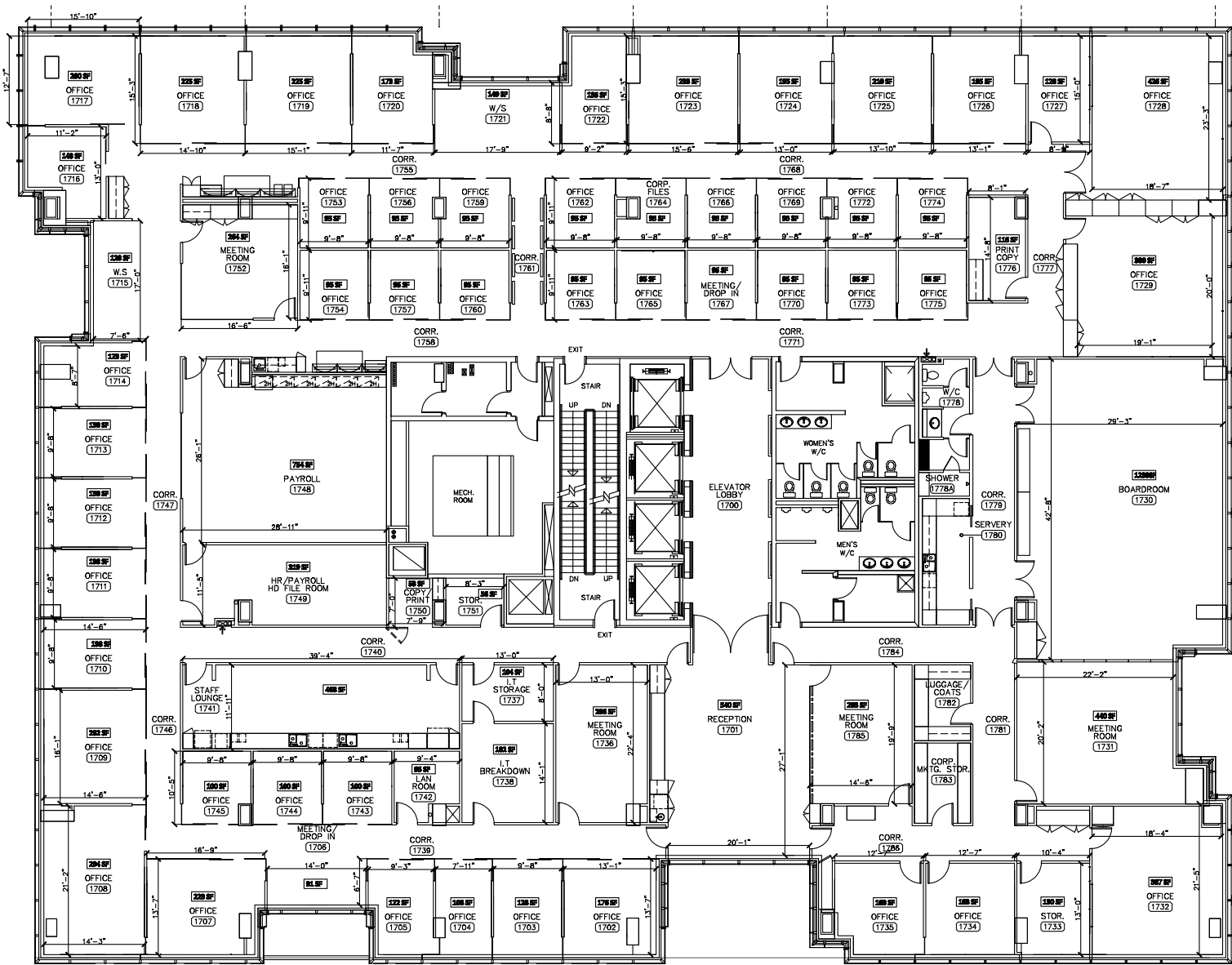
## Property Highlights

<b>SUBPREMISES:</b>	Suite 1700: 22,752 square feet
	Suite 1800: 22,353 square feet
	<b>Total: 45,105 square feet</b>
<b>OCCUPANCY DATE:</b>	60 - 90 days
<b>SUBLEASE TERM:</b>	June 29, 2030
<b>BASIC RENT:</b>	Market Sublease Rates
<b>2025 OPERATING COSTS (PSF):</b>	\$17.23
<b>PARKING:</b>	22 stalls underground \$550/stall/month - reserved \$490/stall/month - unreserved
<b>CONDITION:</b>	As-is, Fully Furnished





# 17th Floor

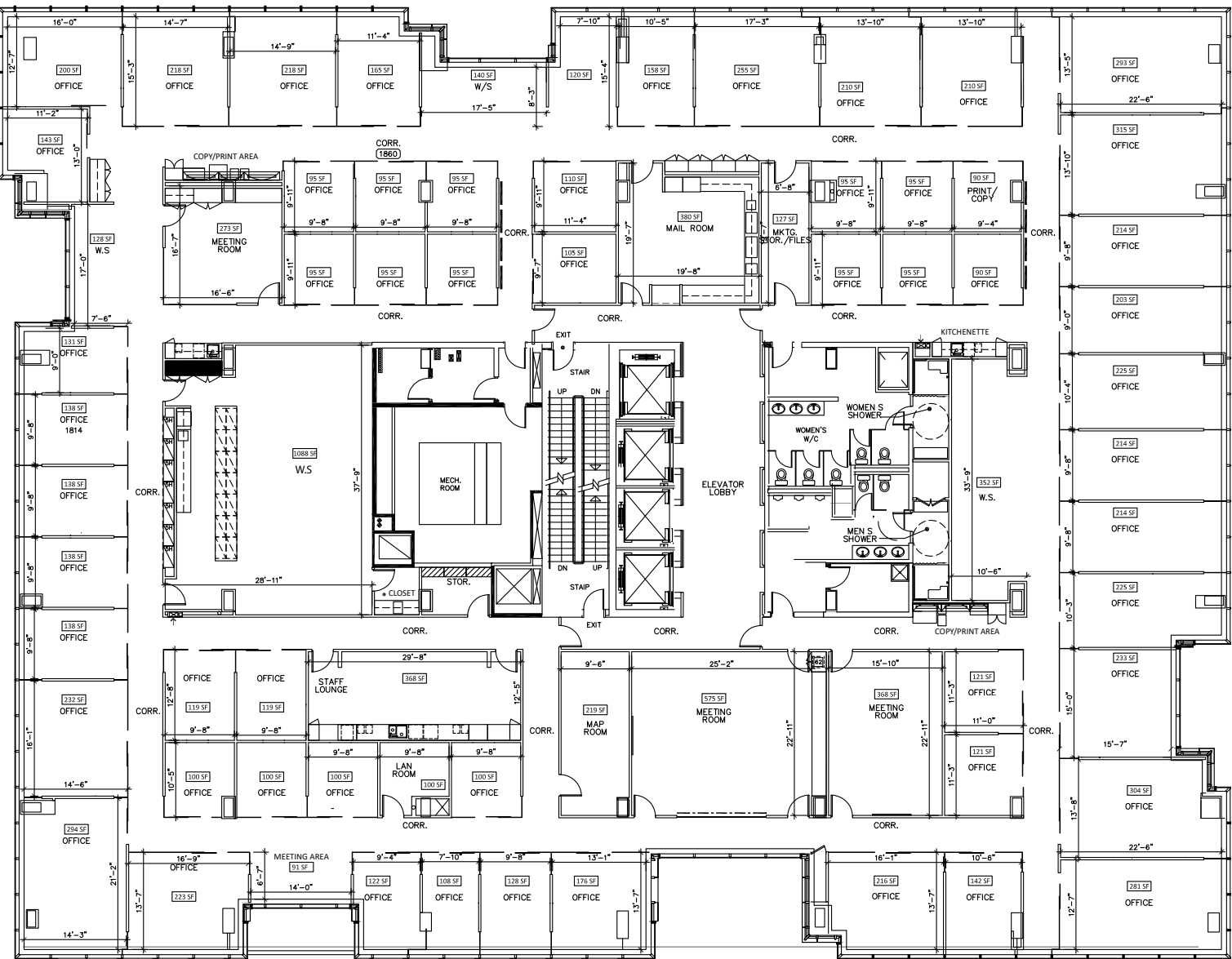


## Suite 1700 - 22,752 square feet

- 29 exterior offices
- 21 interior offices
- Open areas for workstations
- Boardroom
- 4 meeting rooms
- Reception
- 2 kitchens
- 2 copy/print areas
- File room
- Ensuite showers



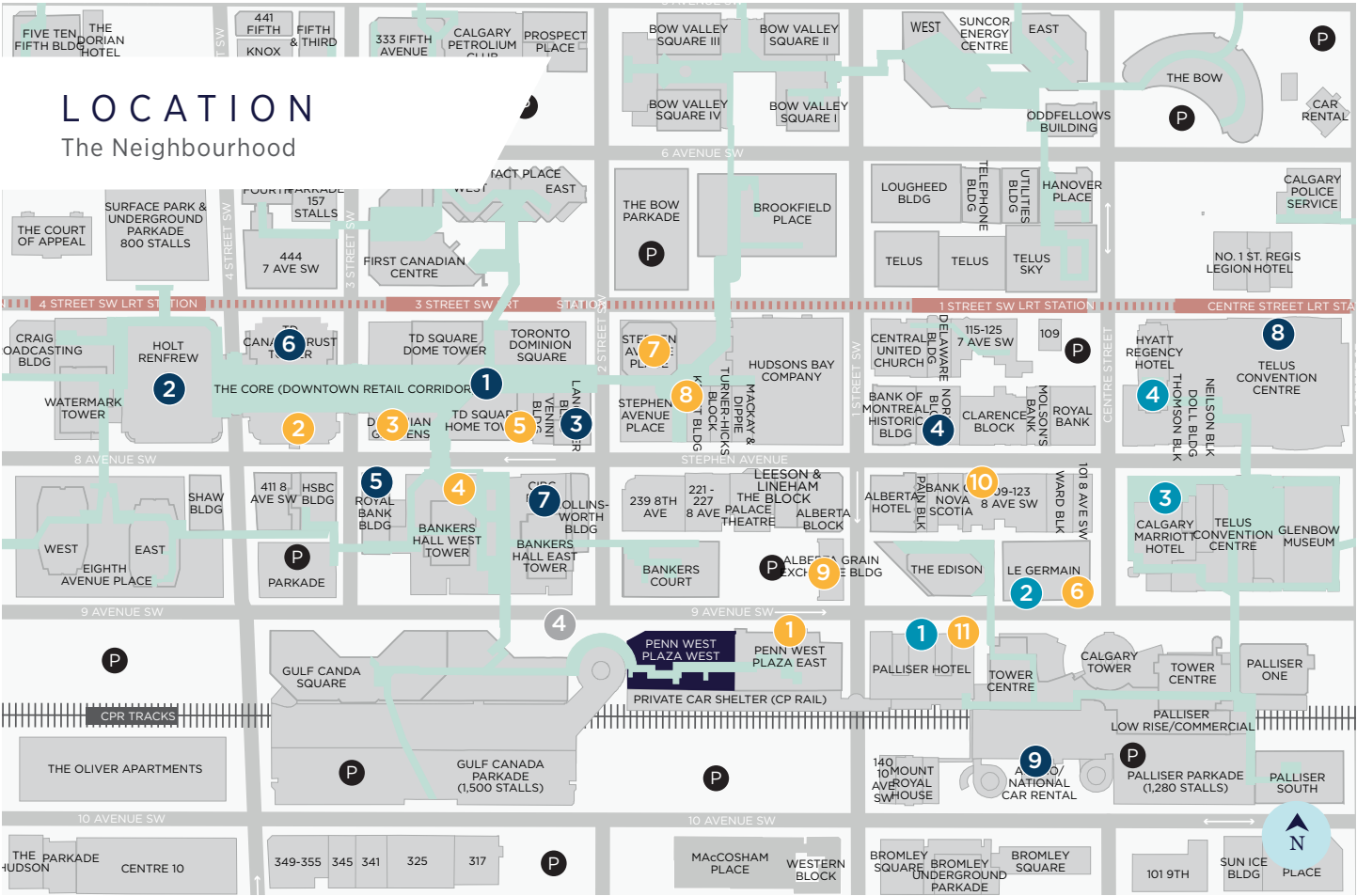
# 18th Floor



## Suite 1800 - 22,353 square feet

- 34 exterior offices
- 21 interior offices
- Open areas for 18 workstations
- 3 meeting rooms
- 2 kitchens
- 2 copy/print areas
- File room
- Ensuite showers





LOCATION  
The Neighbourhood

Area Amenities

RESTAURANTS

- 1. Sukiyaki House
- 2. Hy's Steakhouse
- 3. Cactus Club
- 4. Earls Restaurant
- 5. Local Eatery
- 6. Charcut
- 7. Major Tom Bar
- 8. Pineapple Hall
- 9. Meat and Bread
- 10. The Unicorn
- 11. Hawthorn Dining Room

SERVICES

- 1. The CORE Shopping Mall
- 2. Holt Renfrew
- 3. Simons
- 4. Winners
- 5. RBC
- 6. TD Bank
- 7. CIBC
- 8. Telus Convention Centre
- 9. Avis Car Rental

HOTELS

- 1. Palliser Hotel
- 2. Le Germain
- 3. Calgary Marriott
- 4. Hyatt Regency

THE HEART OF DOWNTOWN CALGARY



Building Details

Located in the heart of downtown Calgary, Penn West Plaza offers a great range of amenities for businesses and their employees. Every office window boasts a beautiful view, enhancing the workspace environment. Easily accessible for getting in and out of downtown, it is only two blocks away from the LRT station and offers quick access to Macleod Trail South.

CONSTRUCTED	2010	HVAC	Monday - Friday 6:00 a.m. - 6:00 p.m.
RENTABLE AREA	411,366 square feet	AVERAGE FLOORPLATE	22,400 square feet
BUILDING MANAGER	Morguard Investments Limited	LANDLORD	Morguard 9th Avenue General Partners Limited as a general partner for and on behalf of Morguard 9th Avenue Limited Partnership.
NUMBER OF FLOORS	20	BUILDING CLASS	A





## CONTACT INFORMATION

### CRAIG HULSMAN

Executive Vice President  
+1 403 305 8974  
craig.hulsman@cushwake.com

### JODY SICK

Associate Vice President  
+1 403 369 3111  
jody.sick@cushwake.com



©2025 Cushman & Wakefield. All rights reserved. The information contained in this communication is strictly confidential. This information has been obtained from sources believed to be reliable but has not been verified. NO WARRANTY OR REPRESENTATION, EXPRESS OR IMPLIED, IS MADE AS TO THE CONDITION OF THE PROPERTY (OR PROPERTIES) REFERENCED HEREIN OR AS TO THE ACCURACY OR COMPLETENESS OF THE INFORMATION CONTAINED HEREIN, AND SAME IS SUBMITTED SUBJECT TO ERRORS, OMISSIONS, CHANGE OF PRICE, RENTAL OR OTHER CONDITIONS, WITHDRAWAL WITHOUT NOTICE, AND TO ANY SPECIAL LISTING CONDITIONS IMPOSED BY THE PROPERTY OWNER(S). ANY PROJECTIONS, OPINIONS OR ESTIMATES ARE SUBJECT TO UNCERTAINTY AND DO NOT SIGNIFY CURRENT OR FUTURE PROPERTY PERFORMANCE.