



729

8th STREET SOUTHEAST

LOVELAND
COLORADO 80537

OFFICES, WAREHOUSES,
AND YARD SPACE
AVAILABLE FOR LEASE



CUSHMAN &
WAKEFIELD



// PROPERTY FEATURES

Welcome to 729 8th Street, a premier property offering 1,039-27,932 square feet of versatile industrial and office space. Nestled in a prime location, this facility combines functionality with convenience, ideal for businesses seeking a strategic base of operations. The property features a warehouse and four office suites available, providing ample room for a variety of industrial processes and office configurations. This makes it a perfect choice for companies looking to optimize their workspace. With its strategic location, 729 8th Street Southeast ensures excellent connectivity and accessibility, positioning your business at the heart of a dynamic and thriving area.

PROPERTY DETAILS

Available Size:	1,039 - 27,932 SF
Warehouse Building 1:	5,633 - 13,701 SF
Warehouse Building 3:	5,380 SF
Yard Space:	0.25 - 0.5 AC

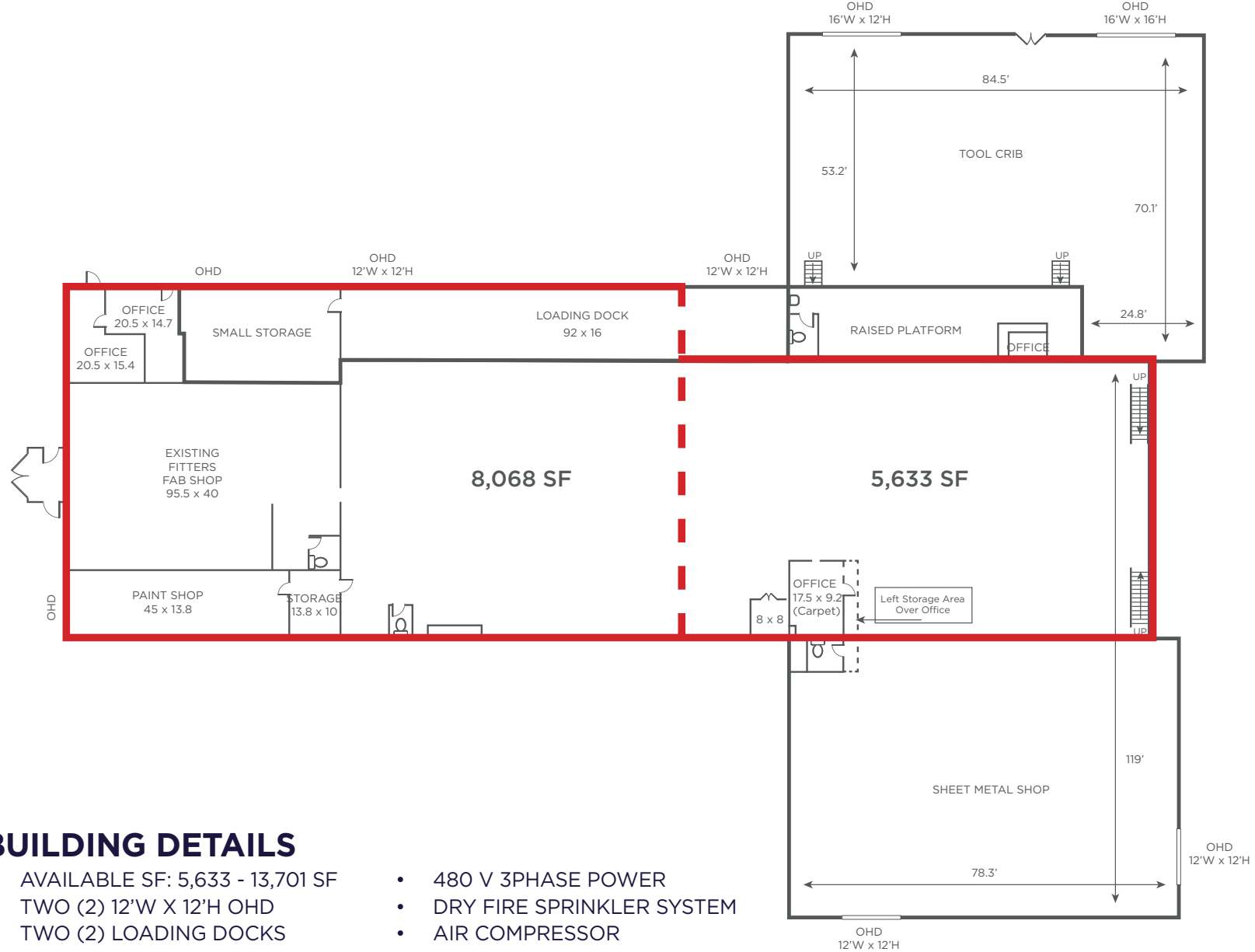
Office Suite 1:	1,911 SF
Office Suite 2:	1,563 SF
Office Suite 3:	1,039 SF
Office Suite 4:	1,915 SF
Office Basement Suite:	2,423 SF

// **729 8th STREET SOUTHEAST**
Loveland, Colorado 80537

// PROPERTY AERIAL



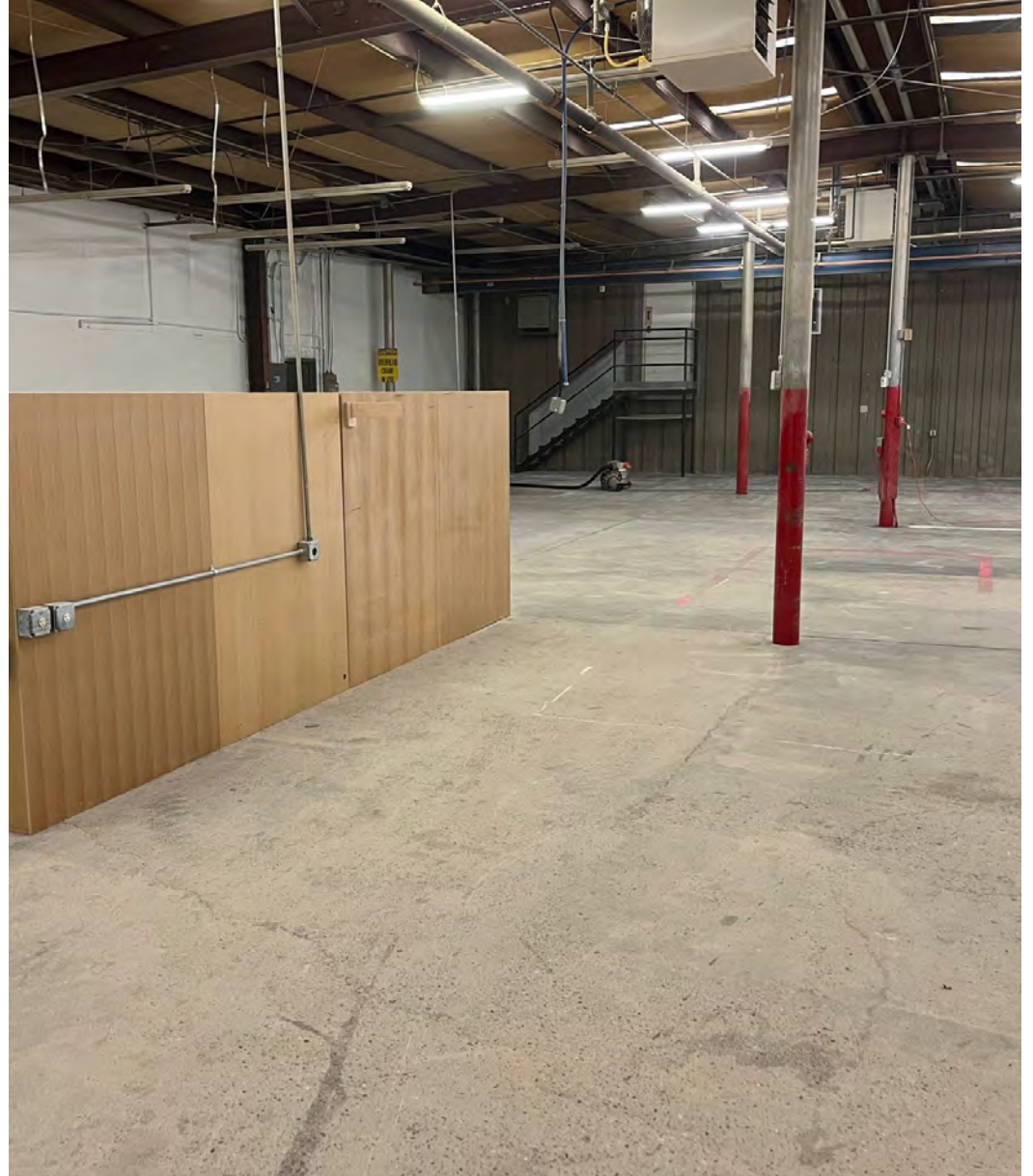
// WAREHOUSE BUILDING 1 LEASE RATE: \$8.00/SF NNN | NNN: \$3.33/SF



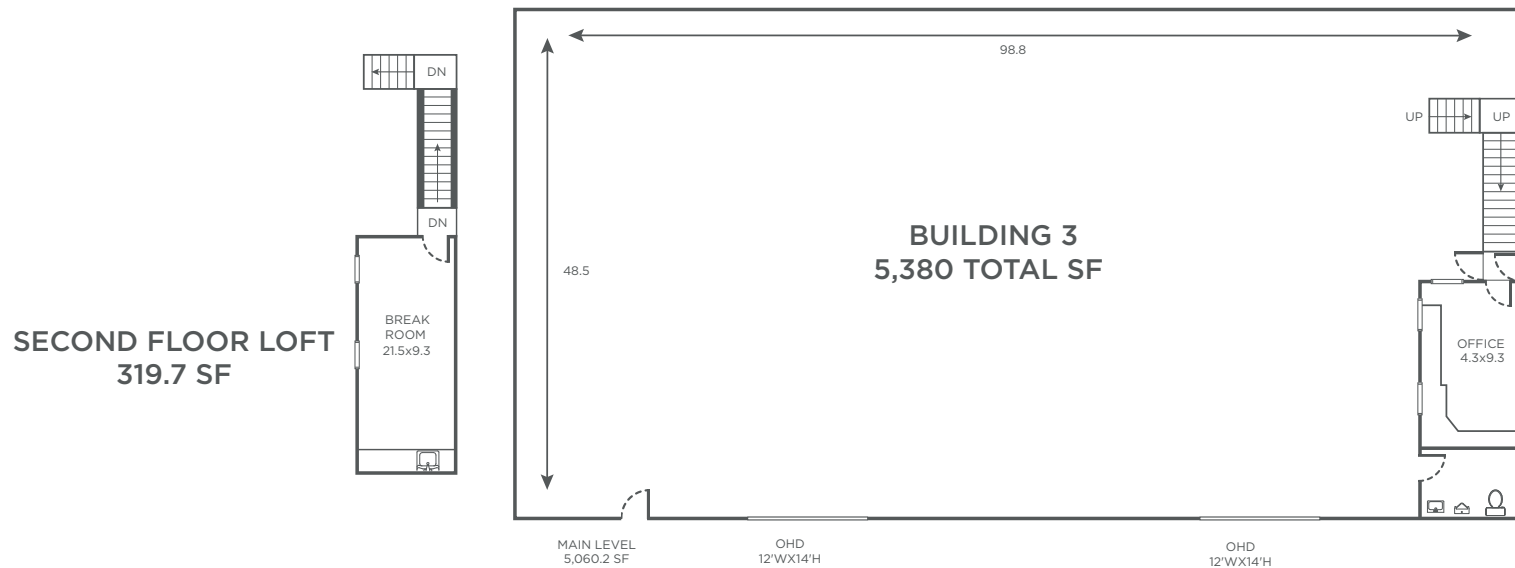
BUILDING DETAILS

- AVAILABLE SF: 5,633 - 13,701 SF
- TWO (2) 12'W X 12'H OHD
- TWO (2) LOADING DOCKS
- PAINT BOOTH
- 480 V 3PHASE POWER
- DRY FIRE SPRINKLER SYSTEM
- AIR COMPRESSOR

// BUILDING 1 PHOTOS



// WAREHOUSE BUILDING 3 LEASE RATE: \$11.00/SF NNN | NNN: \$3.33/SF



BUILDING DETAILS

- 5,380 SF WAREHOUSE
- 0.25 - 0.5 AC YARD SPACE
- TWO (2) 12'WX14'H OHDs
- OH 1 TON CRANE
- SWAMP COOLER & GAS HEATERS
- BREAKROOM IN LOFT
- 480 V 3PHASE POWER
- AIR HANDLING / EXHAUST SYSTEM
- ONE (1) RESTROOM
- DRY FIRE SPRINKLER SYSTEM
- YEAR BUILT 1980 | REMODELED 2011

// BUILDING 3 PHOTOS



// OFFICE BUILDING LEASE RATE: \$12.00/SF GROSS

Office Suite 3 | 1,039 SF - **AVAILABLE**



Office Suite 2 | 1,563 SF - **AVAILABLE**

Office Suite 1 | 1,911 SF - **AVAILABLE**



SUITE 1

- \$1,911/MONTH
- NINE (9) PRIVATE OFFICES
- WOOD DECK

SUITE 2

- \$1,563/MONTH
- NINE (9) PRIVATE OFFICES
- STORAGE

SUITE 3

- \$1,039/MONTH
- FIVE (5) PRIVATE OFFICES
- ONE(1) RESTROOM

SUITE 4

- \$1,915/MONTH
- SIX (6) PRIVATE OFFICES
- TWO (2) RESTROOMS

BASEMENT

- \$2,423/MONTH
- 2,423 SF
- FIVE (5) PRIVATE OFFICES
- TWO (2) CONFERENCE ROOMS

// OFFICE BUILDING PHOTOS





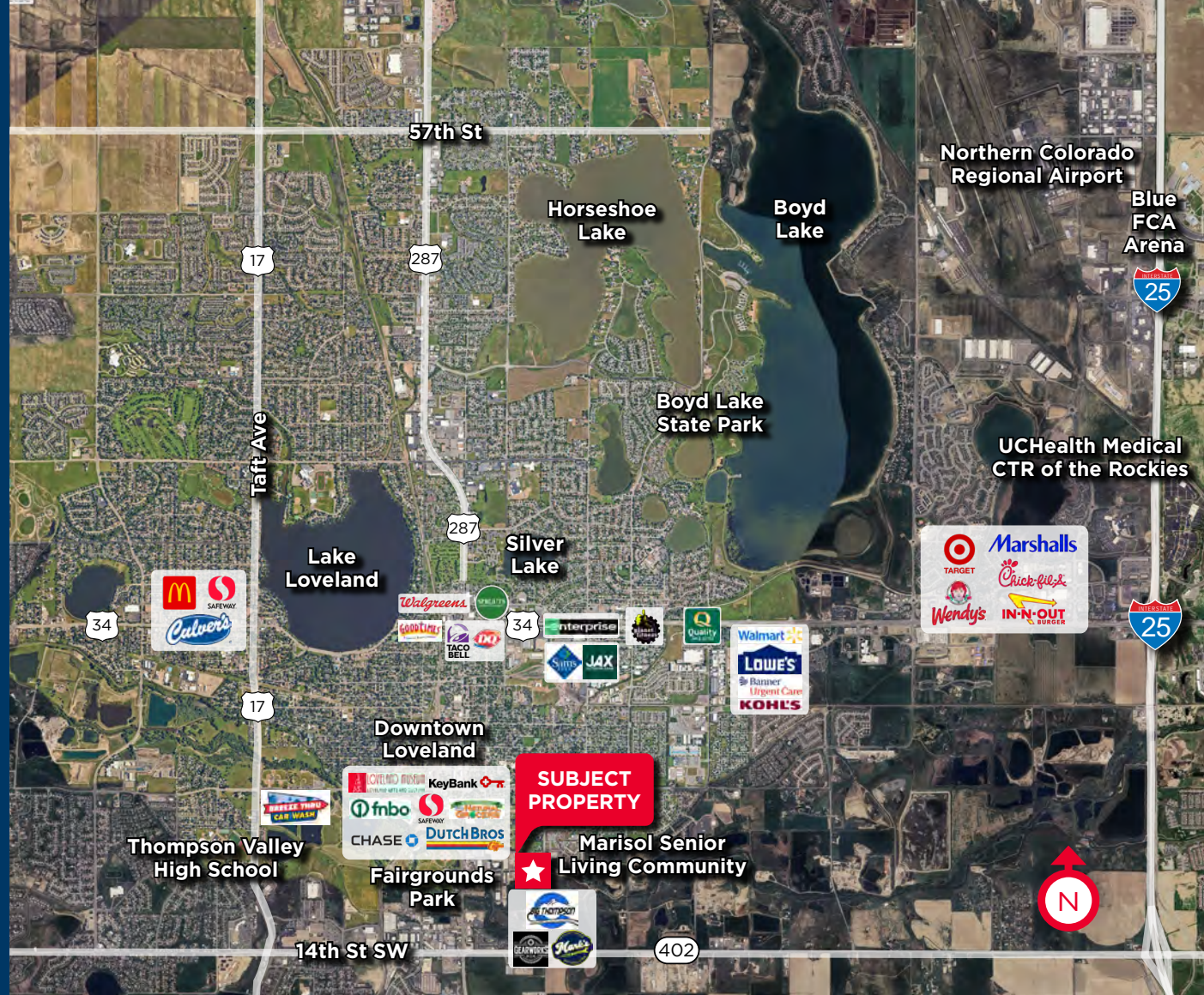
CONTACTS:

TRAVIS ACKERMAN
Executive Managing Director
+1 970 267 7720
travis.ackerman@cushwake.com

TY MASHEK
Senior Associate
+1 303 525 3125
ty.mashek@cushwake.com

772 Whalers Way, Suite 200
Fort Collins, Colorado 80525
+1 970 776 3900
cushmanwakefield.com

©2025 Cushman & Wakefield. All rights reserved. The information contained in this communication is strictly confidential. This information has been obtained from sources believed to be reliable but has not been verified. NO WARRANTY OR REPRESENTATION, EXPRESS OR IMPLIED, IS MADE AS TO THE CONDITION OF THE PROPERTY (OR PROPERTIES) REFERENCED HEREIN OR AS TO THE ACCURACY OR COMPLETENESS OF THE INFORMATION CONTAINED HEREIN, AND SAME IS SUBMITTED SUBJECT TO ERRORS, OMISSIONS, CHANGE OF PRICE, RENTAL OR OTHER CONDITIONS, WITHDRAWAL WITHOUT NOTICE, AND TO ANY SPECIAL LISTING CONDITIONS IMPOSED BY THE PROPERTY OWNER(S). ANY PROJECTIONS, OPINIONS OR ESTIMATES ARE SUBJECT TO UNCERTAINTY AND DO NOT SIGNIFY CURRENT OR FUTURE PROPERTY PERFORMANCE.



NORTHERN COLORADO

- Advanced Energy Industries, Inc.
- Anheuser Busch
- Banner Health
- Colorado State University
- Columbine Health Systems
- Hewlett-Packard Enterprise
- Kaiser Permanente
- Platte River Power Authority
- University of Colorado Health
- Water Pik
- Woodward
- Xcel Energy Co.

 2024 Total
Loveland Population
78,526

 2024 Total Loveland
(SUC01-99) Businesses
3,784

 2024 Average
Household Income
\$107,749