

FOR SUBLEASE

33 ARCH STREET

BOSTON, MA 02210



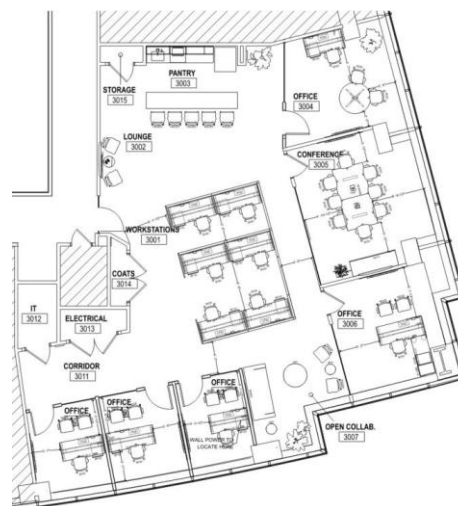
**CUSHMAN &
WAKEFIELD**

3,383 RSF AVAILABLE

Floorplan

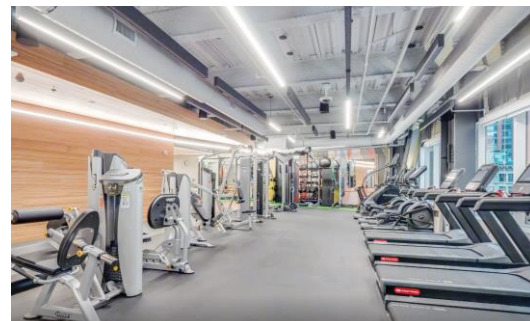
Space Overview

- 30th Floor; Suite 3030
- 3,383 RSF
- Plug & Play
- Term through April 30th, 2029



Building Features

- Conference Center
- Fitness Center
- Onsite Parking
- Ground Floor Café



SPACE PHOTOS



CONTACT INFORMATION

RYAN P. HEALY

Senior Director

+1 978 460 1438

ryan.healy@cushwake.com

SALLY JENKS

Associate

+1 617 922 2289

sally.jenks@cushwake.com



©2025 Cushman & Wakefield. All rights reserved. The information contained in this communication is strictly confidential. This information has been obtained from sources believed to be reliable but has not been verified. NO WARRANTY OR REPRESENTATION, EXPRESS OR IMPLIED, IS MADE AS TO THE CONDITION OF THE PROPERTY (OR PROPERTIES) REFERENCED HEREIN OR AS TO THE ACCURACY OR COMPLETENESS OF THE INFORMATION CONTAINED HEREIN, AND SAME IS SUBMITTED SUBJECT TO ERRORS, OMISSIONS, CHANGE OF PRICE, RENTAL OR OTHER CONDITIONS, WITHDRAWAL WITHOUT NOTICE, AND TO ANY SPECIAL LISTING CONDITIONS IMPOSED BY THE PROPERTY OWNER(S). ANY PROJECTIONS, OPINIONS OR ESTIMATES ARE SUBJECT TO UNCERTAINTY AND DO NOT SIGNIFY CURRENT OR FUTURE PROPERTY PERFORMANCE.