



FOR LEASE

18912  
LAKE  
DRIVE  
EAST

DELL  
FIVE

Chanhassen, MN 55317





# PROPERTY HIGHLIGHTS

- Owned by Nicola Wealth
- 464,204 total SF in 9 buildings
- Easy access to Hwy 5 and Highway 212
- Many area amenities available
- Excellent Hwy 5 visibility

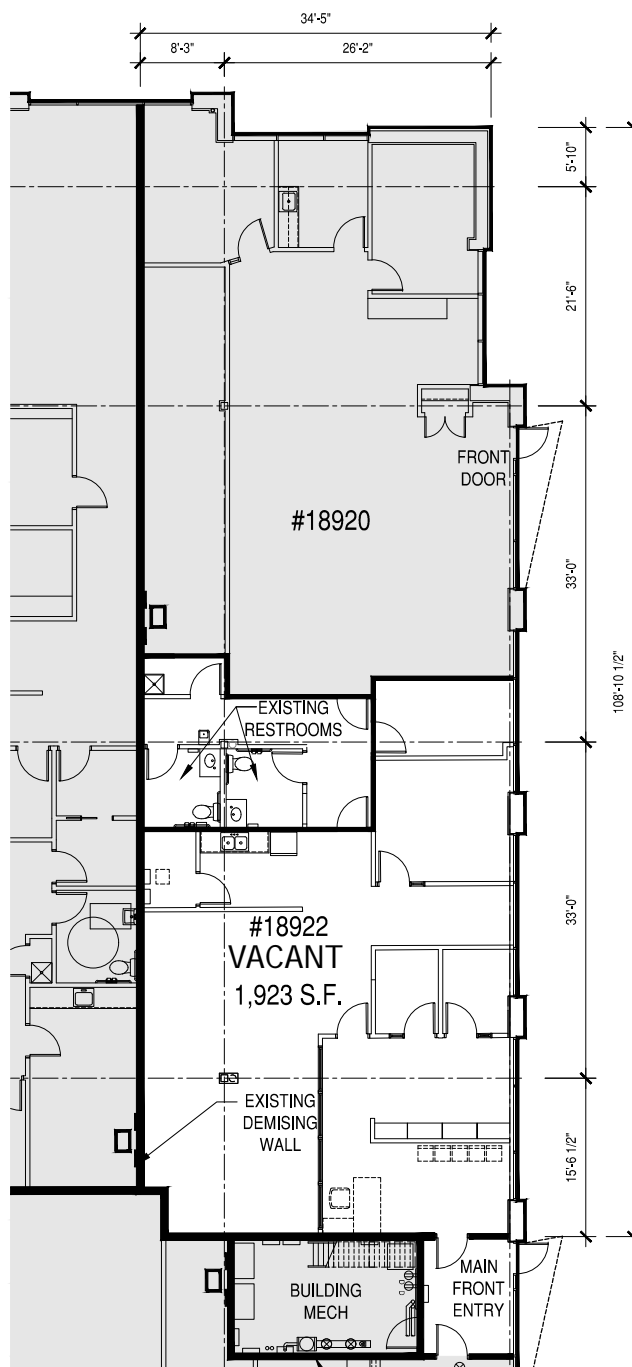
## Dell Five E : FEATURES

ADDRESS	18912-18924 Lake Dr. E, Chanhassen
BUILDING TOTAL SF	12,869 SF
CLEAR HEIGHT	18'
YEAR BUILT	1998
LEASE RATES	Negotiable
2025 ESTIMATED TAX & CAM	\$2.06 PSF Tax \$2.17 PSF CAM \$4.23 PSF Total
POWER	480/277 volt, 3000amp, 3-phase
COLUMN SPACING	30' x 40'

## VACANCIES

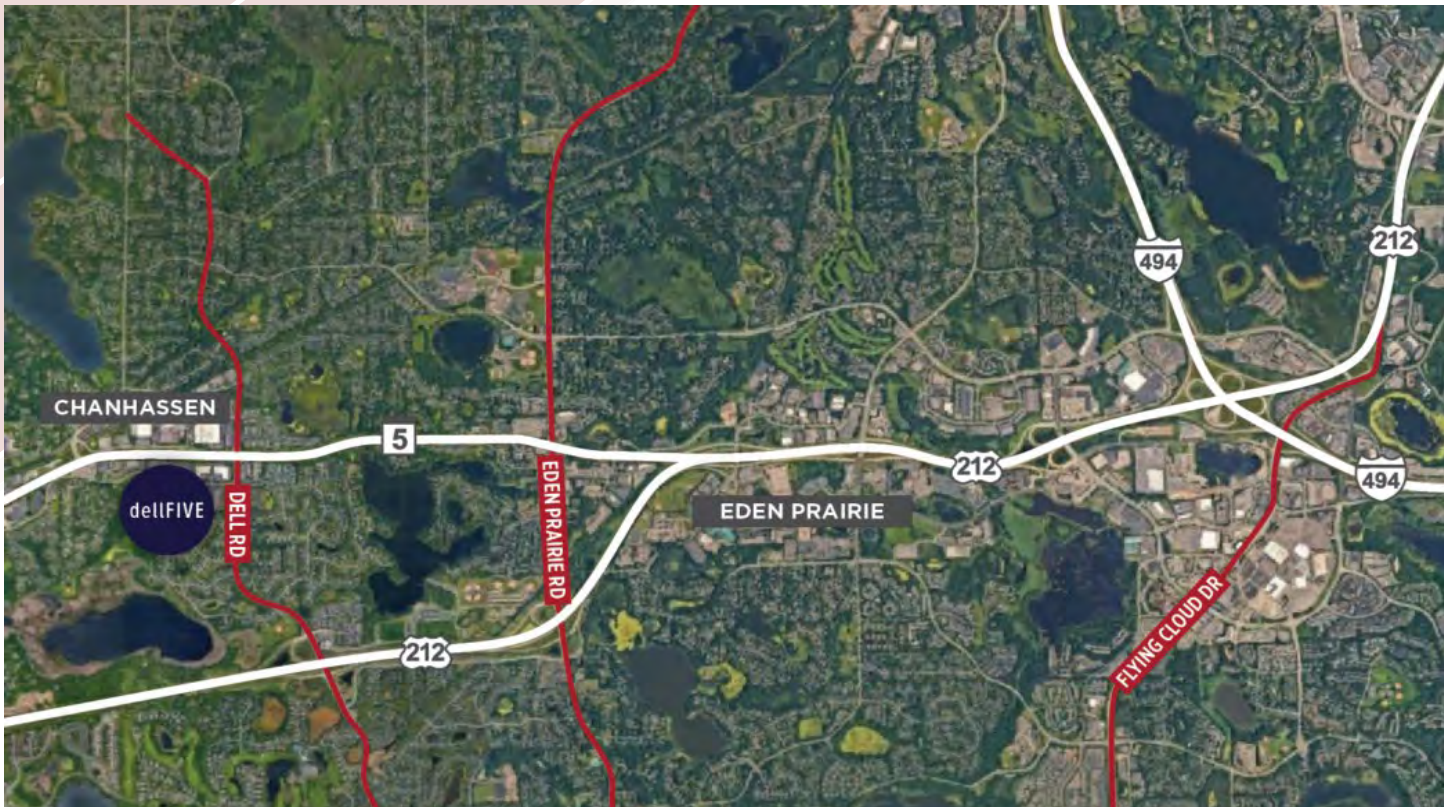
SUITE	18922
AVAILABILITY	1,923 SF Office

**1,923 SF TOTAL**





# AERIAL MAP



# SITE MAP





# PHOTOS





**FOR MORE INFORMATION, PLEASE CONTACT:**

**KRIS SMELTZER**

Executive Managing Director  
+1 952 837 8575  
[kris.smeltzer@cushwake.com](mailto:kris.smeltzer@cushwake.com)

**HUDSON BROTHEN**

Executive Director  
+1 952 893 8261  
[HUDSON.BROTHEN@cushwake.com](mailto:HUDSON.BROTHEN@cushwake.com)

**CUSHMAN & WAKEFIELD**

3500 American Boulevard W, Suite 200  
Minneapolis, MN 55431  
[cushmanwakefield.com](http://cushmanwakefield.com)



©2025 Cushman & Wakefield. All rights reserved. The information contained in this communication is strictly confidential. This information has been obtained from sources believed to be reliable but has not been verified. NO WARRANTY OR REPRESENTATION, EXPRESS OR IMPLIED, IS MADE AS TO THE CONDITION OF THE PROPERTY (OR PROPERTIES) REFERENCED HEREIN OR AS TO THE ACCURACY OR COMPLETENESS OF THE INFORMATION CONTAINED HEREIN, AND SAME IS SUBMITTED SUBJECT TO ERRORS, OMISSIONS, CHANGE OF PRICE, RENTAL OR OTHER CONDITIONS, WITHDRAWAL WITHOUT NOTICE, AND TO ANY SPECIAL LISTING CONDITIONS IMPOSED BY THE PROPERTY OWNER(S). ANY PROJECTIONS, OPINIONS OR ESTIMATES ARE SUBJECT TO UNCERTAINTY AND DO NOT SIGNIFY CURRENT OR FUTURE PROPERTY PERFORMANCE.