



FOR LEASE

DELL
FIVED

18888
LAKE
DRIVE
EAST

Chanhassen, MN 55317





PROPERTY HIGHLIGHTS

- Owned by Nicola Wealth
- 464,204 total SF in 9 buildings
- Available immediately
- Easy access to Hwy 5 and Highway 212
- Many area amenities available
- Class A Landlord
- Excellent Hwy 5 visibility
- Endcap with good glassline

Dell Five D : FEATURES

ADDRESS	18888 Lake Dr. E, Chanhassen
BUILDING TOTAL SF	15,154 SF
CLEAR HEIGHT	18'
YEAR BUILT	1998
LEASE RATES	Negotiable
2025 ESTIMATED TAX & CAM	\$3.42 PSF Tax \$0.58 PSF Insurance \$5.96 PSF Opex \$9.96 PSF Total
POWER	480/277 volt, 3000amp, 3-phase
COLUMN SPACING	30' x 40'

VACANCIES

SUITE	18888
AVAILABILITY	6,648 SF Office

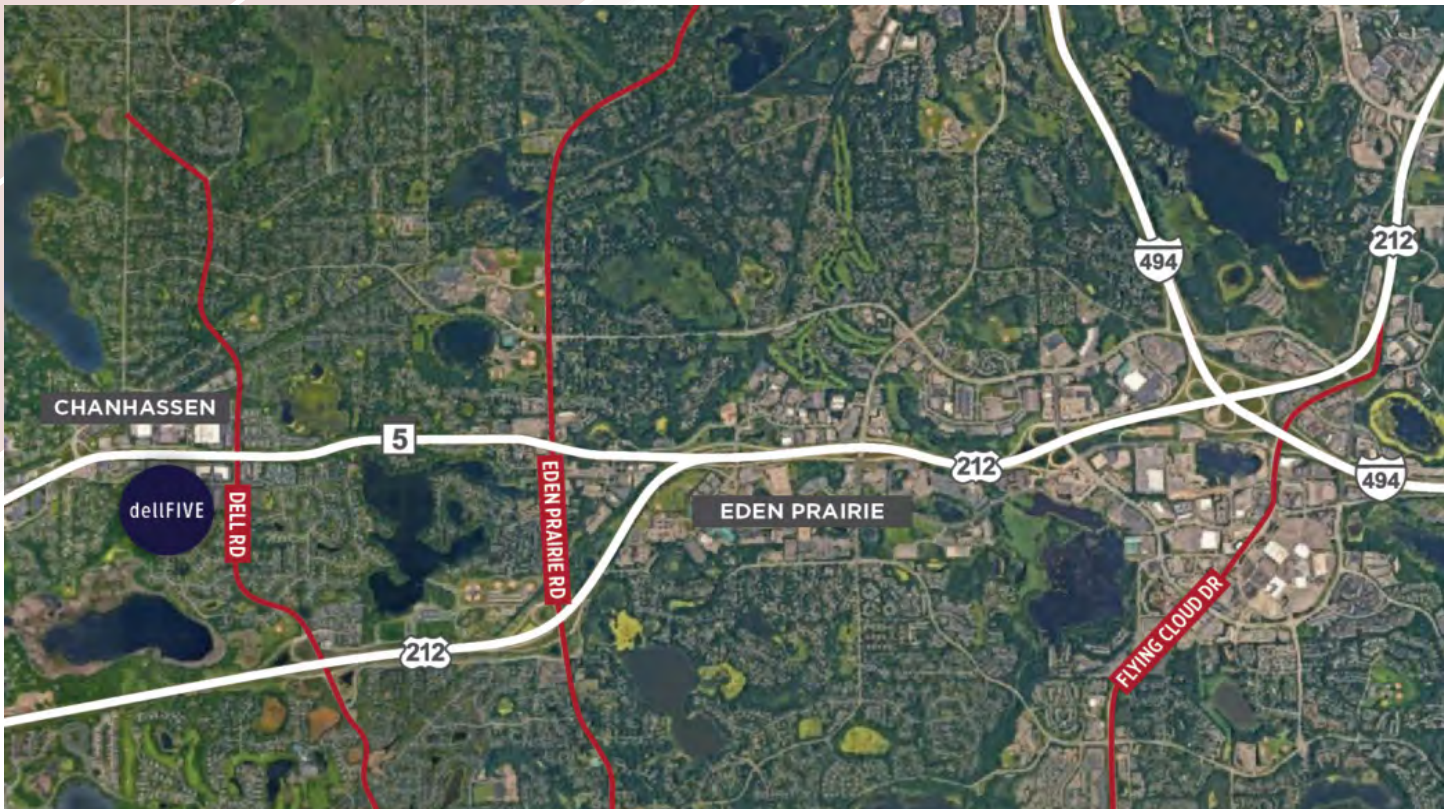
SUITE 18888

6,648 SF OFFICE

6,648 SF TOTAL



AERIAL MAP



SITE MAP



PHOTOS





FOR MORE INFORMATION, PLEASE CONTACT:

KRIS SMELTZER

Executive Managing Director
+1 952 837 8575
kris.smeltzer@cushwake.com

HUDSON BROTHEN

Executive Director
+1 952 893 8261
HUDSON.BROTHEN@cushwake.com

CUSHMAN & WAKEFIELD

3500 American Boulevard W, Suite 200
Minneapolis, MN 55431
cushmanwakefield.com



©2025 Cushman & Wakefield. All rights reserved. The information contained in this communication is strictly confidential. This information has been obtained from sources believed to be reliable but has not been verified. NO WARRANTY OR REPRESENTATION, EXPRESS OR IMPLIED, IS MADE AS TO THE CONDITION OF THE PROPERTY (OR PROPERTIES) REFERENCED HEREIN OR AS TO THE ACCURACY OR COMPLETENESS OF THE INFORMATION CONTAINED HEREIN, AND SAME IS SUBMITTED SUBJECT TO ERRORS, OMISSIONS, CHANGE OF PRICE, RENTAL OR OTHER CONDITIONS, WITHDRAWAL WITHOUT NOTICE, AND TO ANY SPECIAL LISTING CONDITIONS IMPOSED BY THE PROPERTY OWNER(S). ANY PROJECTIONS, OPINIONS OR ESTIMATES ARE SUBJECT TO UNCERTAINTY AND DO NOT SIGNIFY CURRENT OR FUTURE PROPERTY PERFORMANCE.