



CUSHMAN &
WAKEFIELD

VERITAS

FOR SUBLEASE

801 Heathrow

801 International Pkwy. | Lake Mary, Florida

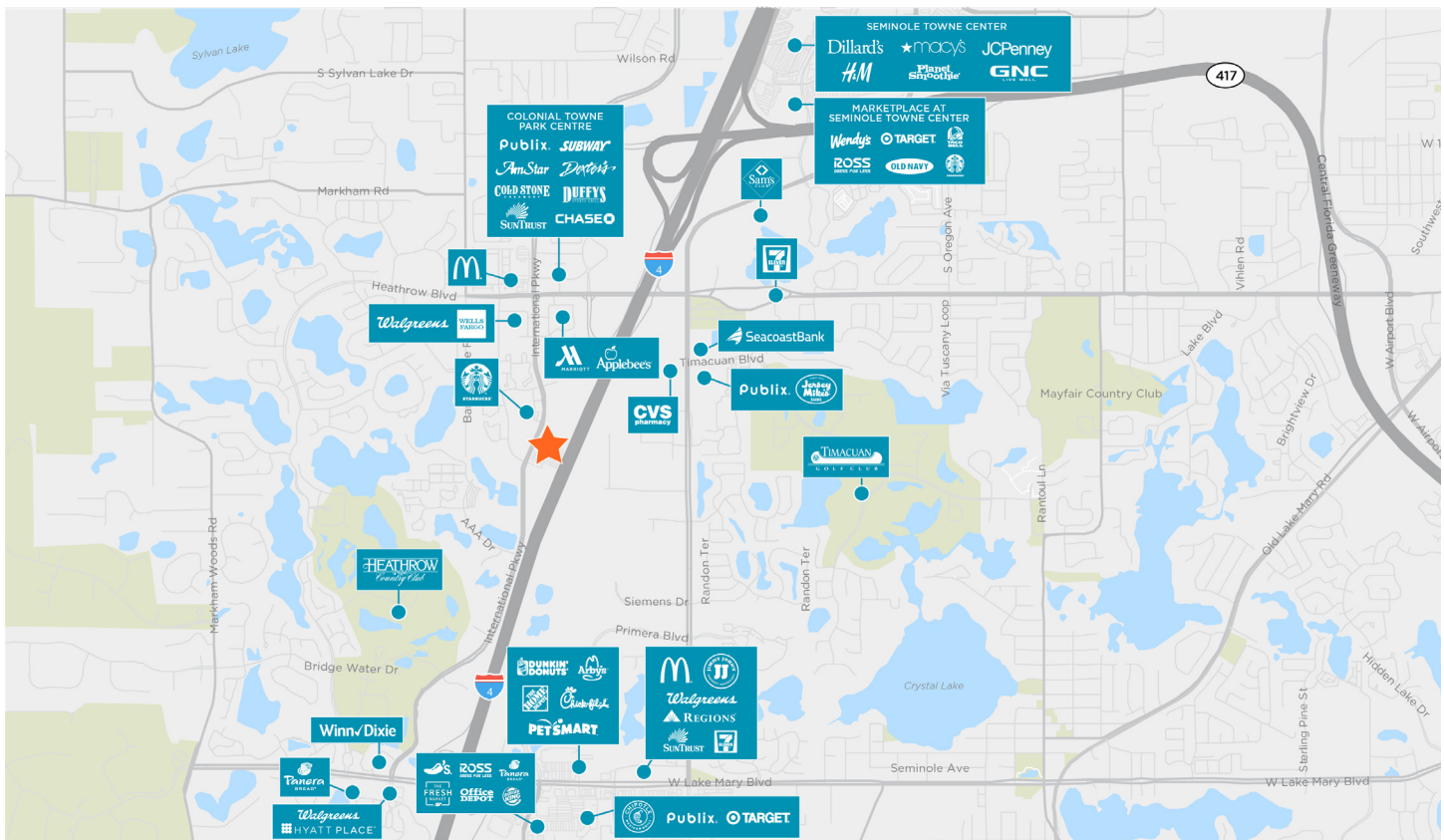
FOR SUBLEASE: ±23,953 SF

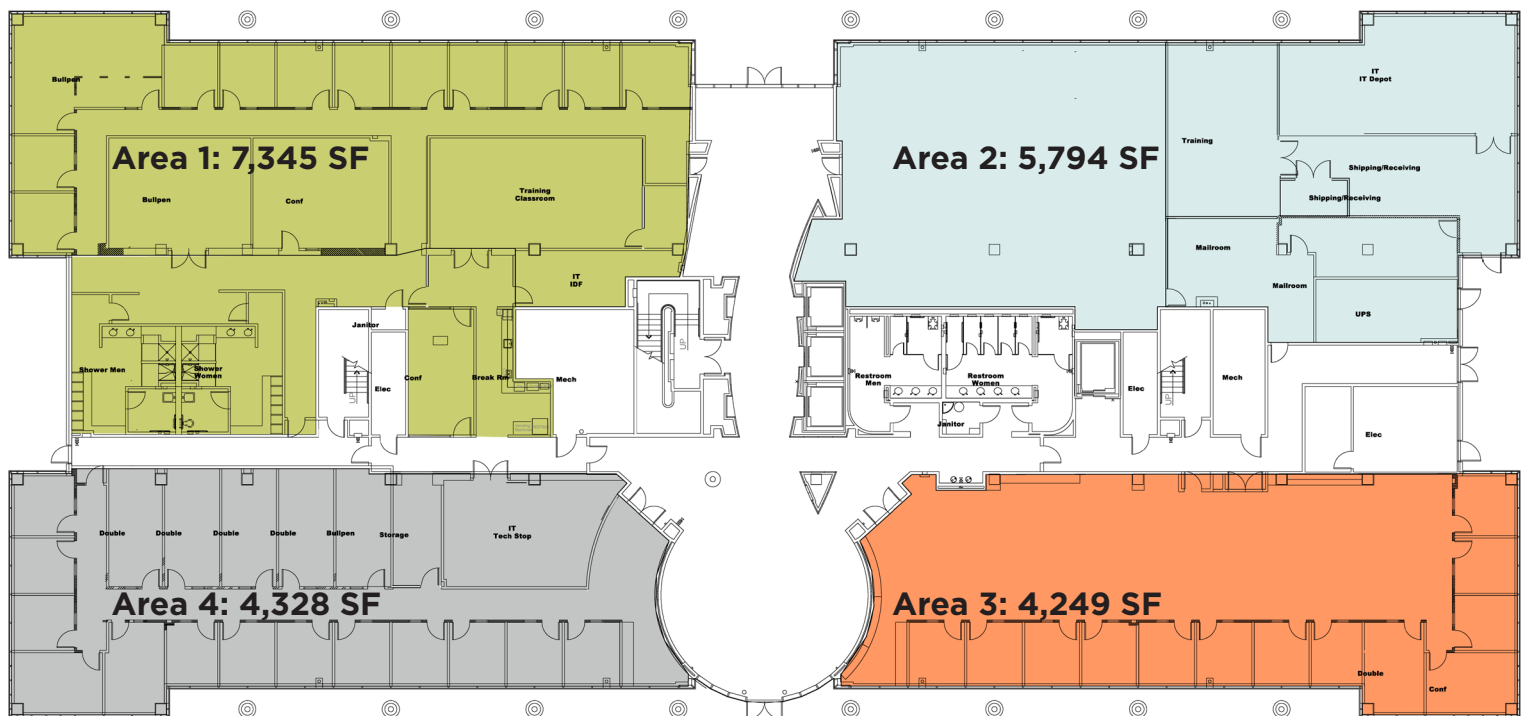


Property Information

Address	801 International Pkwy. Lake Mary, Florida 32746		
Year built	2000	Rental rate	Negotiable
Total bldg.	150,567 SF	Term	Sublease thru 8/31/2027
Available space	4,249 SF - 23,953 SF	Parking ratio	4.20/1,000 SF
Highlights	<ul style="list-style-type: none">• On-site executive suites• 801 Heathrow is located conveniently in the heart of the Florida High-Tech Corridor with immediate access to I-4 and 417• Amenities: 24 hr. controlled access, shipping and receiving capabilities, electric car charging and signage opportunities		

801 International Pkwy. | Lake Mary, Florida





For more information, contact:

John Skinner
Associate

D: +1 407 241 3081
M: +1 407 538 8059
kevin.hammond@cushwake.com

Jeff Sweeney, SIOR
Senior Director

D: +1 407 541 4429
M: +1 407 620 6336
jeff.sweeney@cushwake.com



20 North Orange Avenue
Suite 300
Orlando, FL 32801

cushmanwakefield.com
cushwakeorlando.com

 [@cushwakeorlando](https://twitter.com/cushwakeorlando)

©2019 Cushman & Wakefield. NO WARRANTY OR REPRESENTATION, EXPRESS OR IMPLIED, IS MADE TO THE ACCURACY OR COMPLETENESS OF THE INFORMATION CONTAINED HEREIN, AND SAME IS SUBMITTED SUBJECT TO ERRORS, OMISSIONS, CHANGE OF PRICE, RENTAL OR OTHER CONDITIONS, WITHDRAWAL WITHOUT NOTICE, AND TO ANY SPECIAL LISTING CONDITIONS IMPOSED BY THE PROPERTY OWNER(S). AS APPLICABLE, WE MAKE NO REPRESENTATION AS TO THE CONDITION OF THE PROPERTY (OR PROPERTIES) IN QUESTION.