



West End Business Center

55 Shaver Street, San Rafael, CA 94901



CLASS A OFFICE AVAILABLE

TURN-KEY MOVE-IN READY SUITES

NIELS VON DOEPP
+1 415 451 2403
niels.vondoepp@cushwake.com
Lic #: 01447530

BRAD WERNER
+1 415 677 0427
brad.werner@cushwake.com
Lic #: 00849822

PROPERTY HIGHLIGHTS

55 Shaver Street presents a rare opportunity to lease in the heart of San Rafael's commercial district. Strategically located with easy access to Highway 101 and I-580, this property offers exceptional connectivity to the San Francisco Bay Area, East Bay, and Marin County.

This well-maintained building features high ceilings, modern finishes, and flexible floor plans, making it ideal for a variety of office users. The building also features on-site parking, exterior balconies and decks, and abundant natural light.



AVAILABLE

SUITE 200: ±3,708 RSF
SUITE 300: ±5,320 RSF
SUITE 330: ±1,613 RSF



LOCATION

DOWNTOWN SAN RAFAEL



PARKING

FREE ON-SITE &
STREET



ELEVATOR SERVED

ADA ACCESSIBLE



AMENITIES

WALKING DISTANCE TO
RESTAURANTS/SHOPS



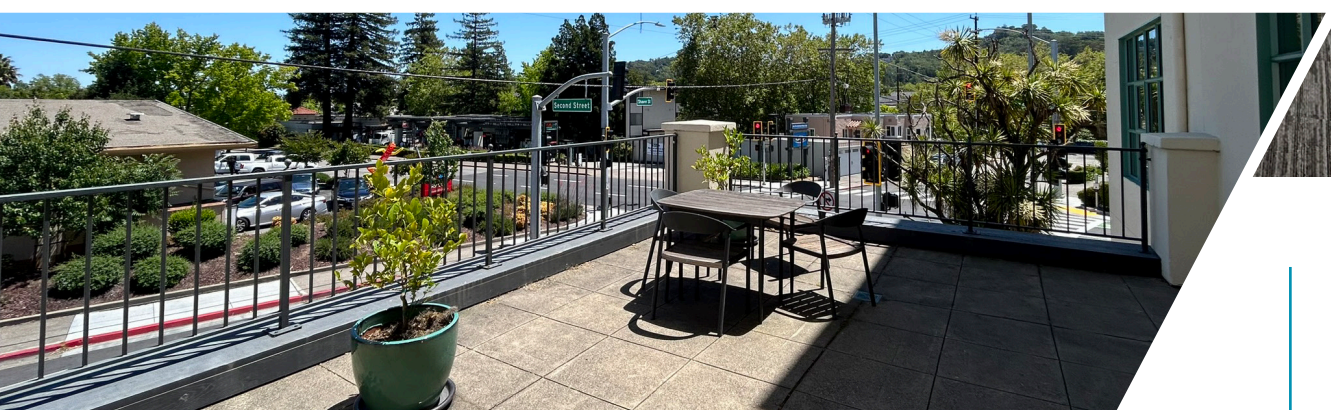
PEDESTRIAN/CYCLIST ACCESSIBILITY

RECENT CITY UPGRADES



SUITE 200

±3,708 RSF



APPROXIMATE SIZE

±3,708 RSF



AVAILABLE

NOW



LEASE RATE

\$2.85 PSF/MO GROSS



FLOOR

2

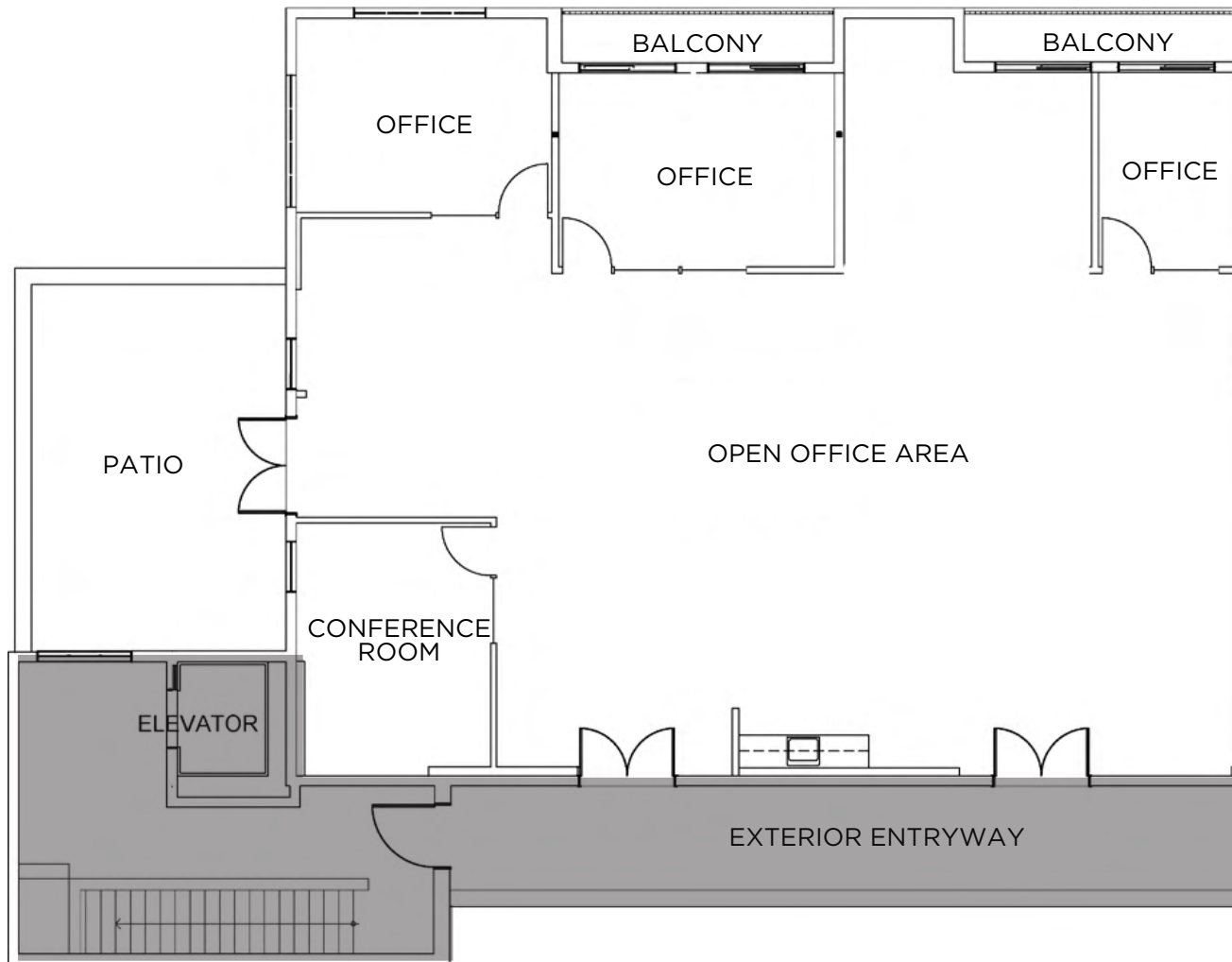


FEATURES

- Newly upgraded spec suite
- 3 private offices
- Conference room
- Kitchenette
- Private patio/balconies
- Double-door entry
- Window-line on three sides
- Great natural light
- High ceilings

SUITE 200

±3,708 RSF



SUITE 300

±5,320 RSF



APPROXIMATE SIZE

±5,320 RSF



AVAILABLE

90 DAY NOTICE



LEASE RATE

\$3.10 PSF/MO GROSS



FLOOR

3

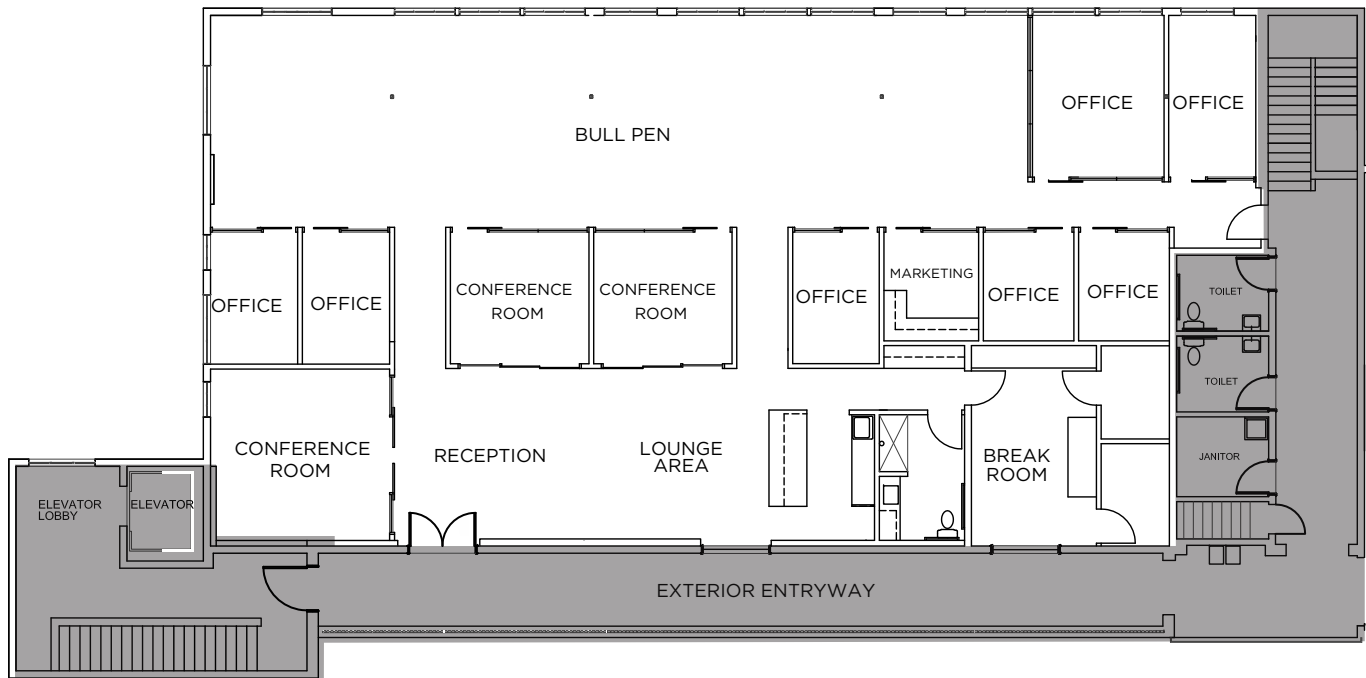


FEATURES

- Modern Class A finishes
- 7 private offices
- Multiple conference rooms
- Large bull pen area
- Extended glassline
- Kitchenette and coffee bar
- Lounge & break room
- Marketing room
- Excellent natural light

SUITE 300

±5,320 RSF



SUITE 330

±1,613 RSF



APPROXIMATE SIZE

±1,613 RSF



AVAILABLE

30 DAY NOTICE



LEASE RATE

\$3.10 PSF/MO GROSS



FLOOR

3

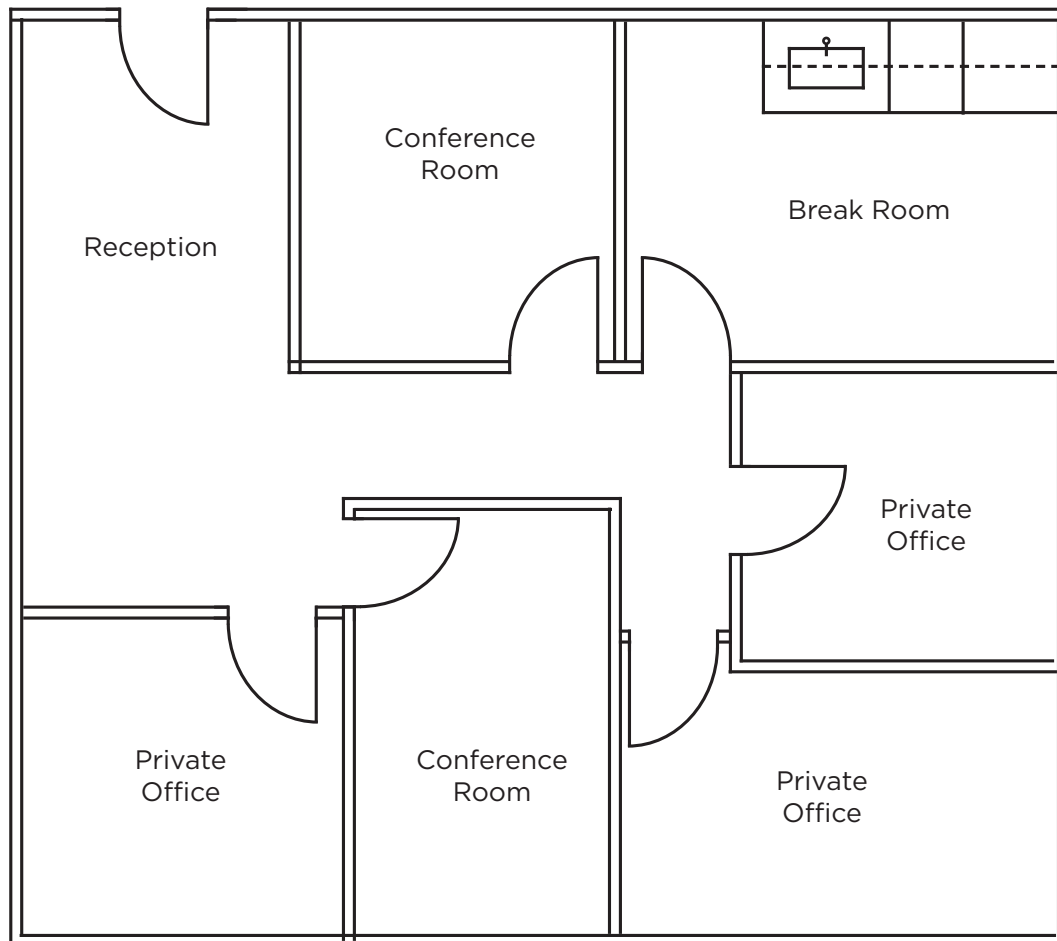


FEATURES

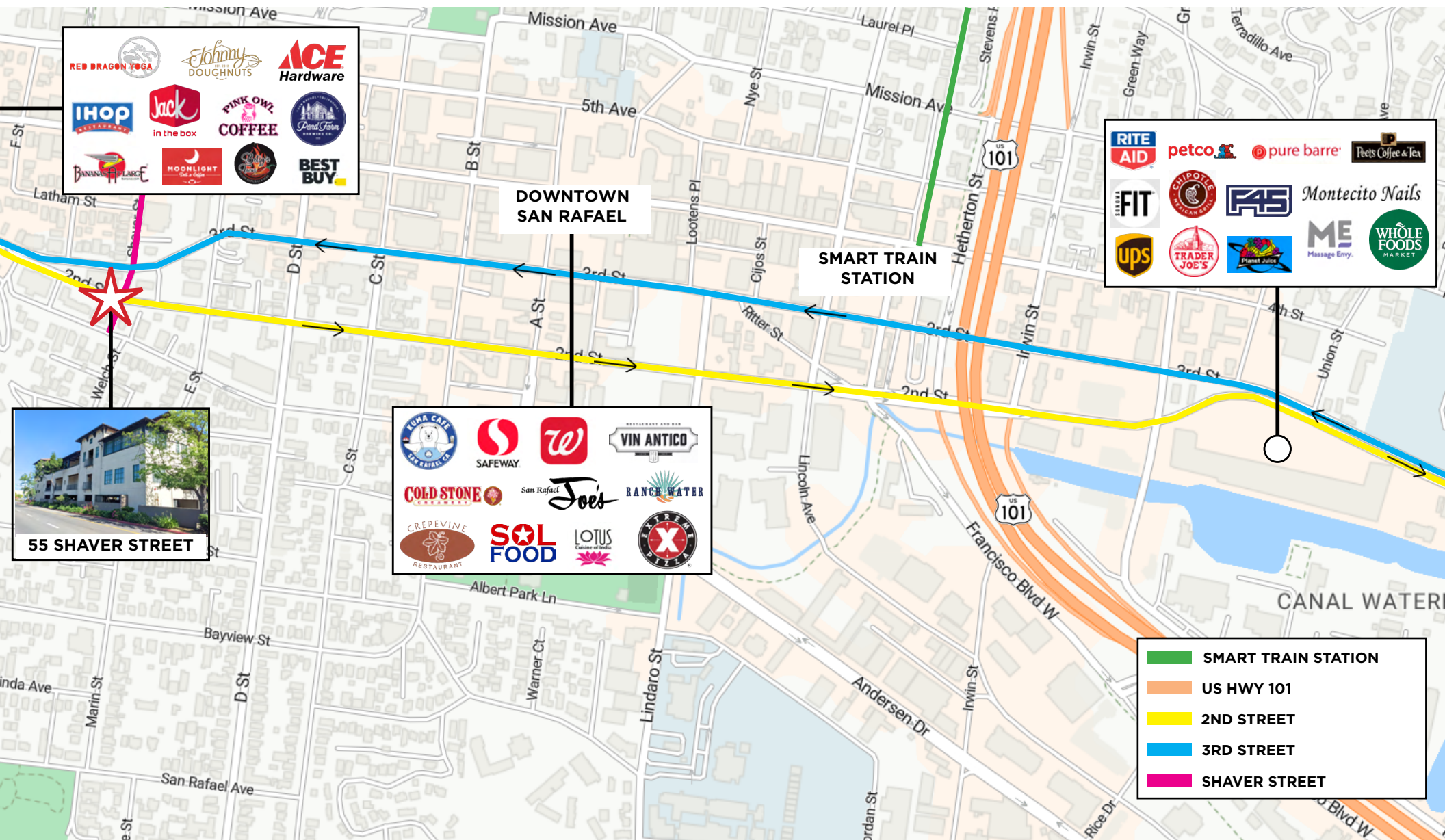
- Efficient layout
- 2 conference rooms
- 3 private offices
- Break room
- Coffee bar with sink
- Reception area
- Excellent natural light
- Furniture available

SUITE 330

±1,613 RSF



AMENITIES MAP





For more information, please contact:

NIELS VON DOEPP

+1 415 451 2403

niels.vondoepp@cushwake.com

Lic #: 01447530

BRAD WERNER

+1 415 377-2205

brad.werner@cushwake.com

Lic #: 00849822