

PRIME COMMERCIAL SPACE AVAILABLE

2334 S. Semoran Blvd
Orlando, FL 32822



FOR LEASE



PROPERTY DESCRIPTION

Prime retail spaces are available now for lease. The units are brand new construction (2024) and are available for a variety of retail/professional office uses.

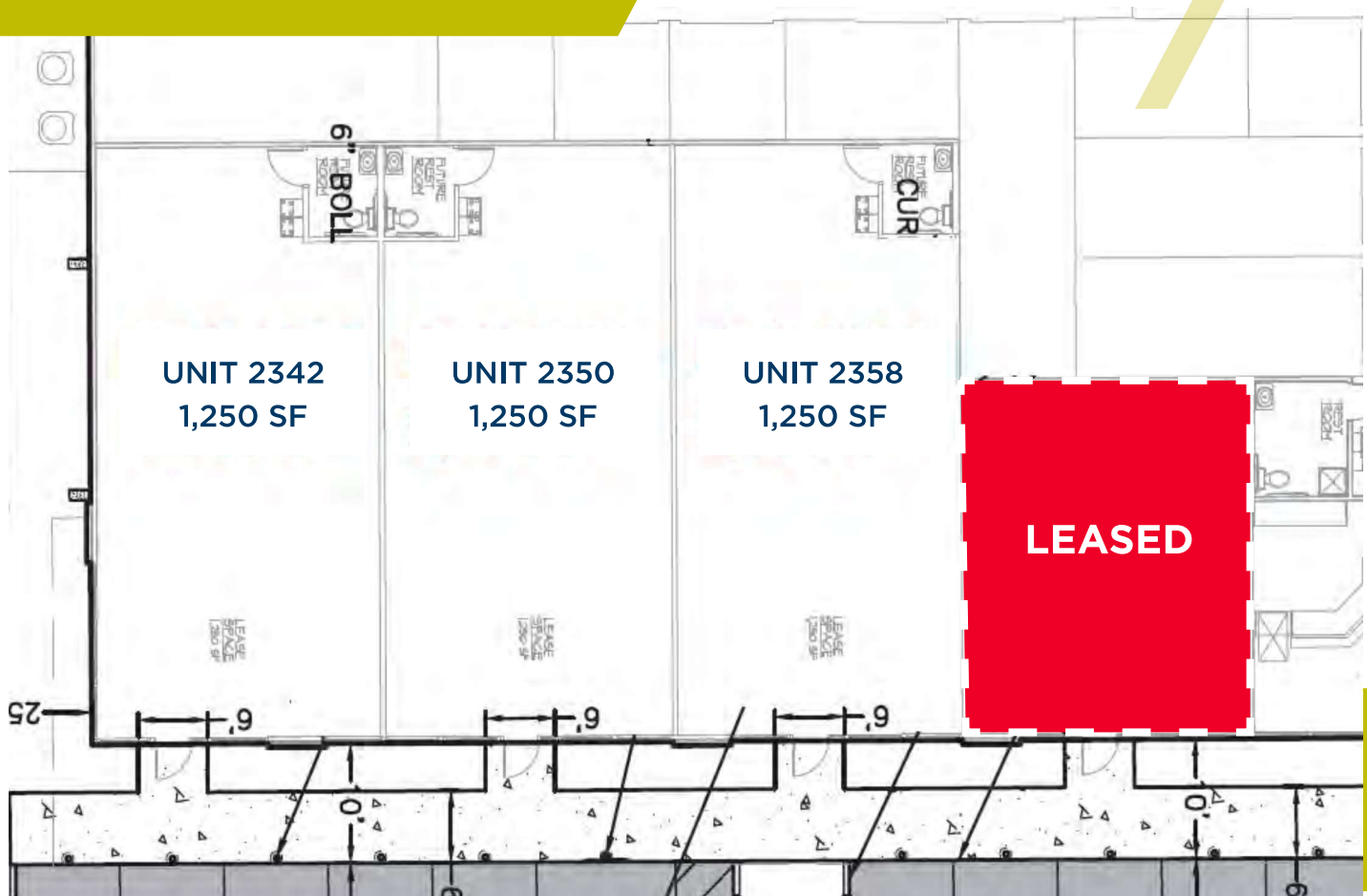
Property Highlights

- These units are available now!
- 3 available units = 1,250 SF each.
- The property is approximately six miles from Orlando International Airport and from Downtown Orlando.
- Space will be delivered in warm grey shell condition (restrooms stubbed out)
- Direct access to property from S. Semoran Boulevard (State Road 436)

Site Details

- **Address:** 2334 South Semoran Boulevard Orlando, FL 32822
- **Use:** Retail and Professional Office (no restaurants)
- **Signage:** Monument and Facade signage
- **Delivery:** Available Now! Space will be delivered in warm grey shell condition
- **Rates:** Call for Rates

AVAILABLE FLOOR PLANS



PROPERTY PHOTOS

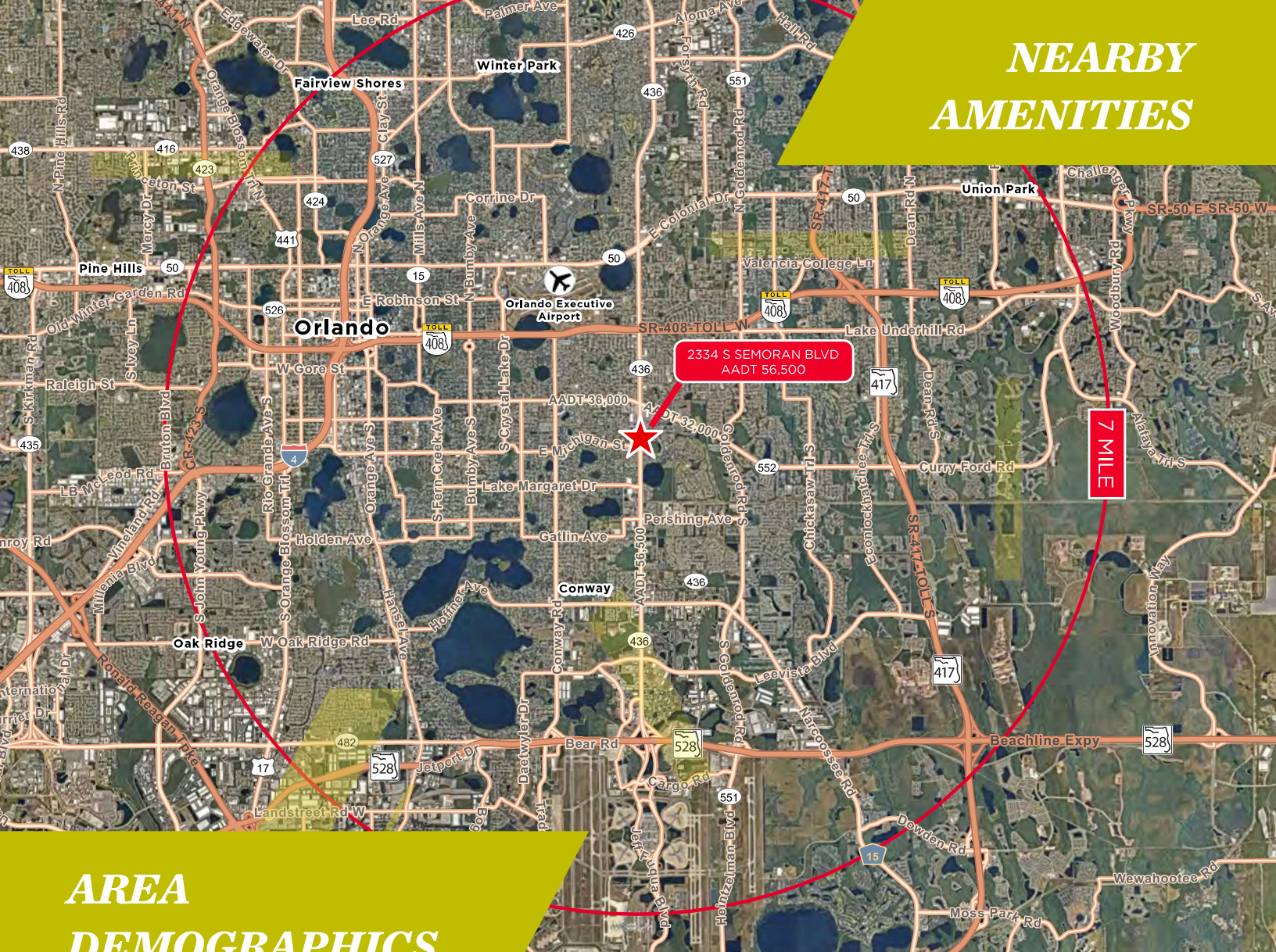


***MONUMENT AND
FACADE SIGNAGE***



***WARM GREY
SHELL DELIVERY***

NEARBY AMENITIES



AREA DEMOGRAPHICS



POPULATION

1 Miles	24,866
3 Miles	127,595
5 Miles	285,991



AVERAGE HH INCOME

1 Miles	\$61,490
3 Miles	\$70,379
5 Miles	\$87,371



MEDIAN HOME VALUE

1 Miles	10,554
3 Miles	50,401
5 Miles	117,061

For more information, please contact:

AMY FOOTE
Senior Associate
Direct +1 407 541 4411
Mobile +1 407 451 5171
amy.foote@cushwake.com

GLEN JAFFEE
Senior Director
Direct +1 407 541 4408
Mobile +1 407 353 3426
glen.jaffee@cushwake.com



©2024 Cushman & Wakefield. All rights reserved. The information contained in this communication is strictly confidential. This information has been obtained from sources believed to be reliable but has not been verified. NO WARRANTY OR REPRESENTATION, EXPRESS OR IMPLIED, IS MADE AS TO THE CONDITION OF THE PROPERTY (OR PROPERTIES) REFERENCED HEREIN OR AS TO THE ACCURACY OR COMPLETENESS OF THE INFORMATION CONTAINED HEREIN, AND SAME IS SUBMITTED SUBJECT TO ERRORS, OMISSIONS, CHANGE OF PRICE, RENTAL OR OTHER CONDITIONS, WITHDRAWAL WITHOUT NOTICE, AND TO ANY SPECIAL LISTING CONDITIONS IMPOSED BY THE PROPERTY OWNER(S). ANY PROJECTIONS, OPINIONS OR ESTIMATES ARE SUBJECT TO UNCERTAINTY AND DO NOT SIGNIFY CURRENT OR FUTURE PROPERTY PERFORMANCE.