



FOR LEASE

**1350 Pear Avenue**  
Mountain View, California



## PROPERTY HIGHLIGHTS

Multi-Tenant Industrial/R&D Spaces Available

**Suite C: ±2,000 SF**

**Suite H/J: ±2,000 SF**

- Prominent Shoreline Location
- Adjacent to Retail Center
- Immediate Access to Highway 101

**Colin Feichtmeir**  
Executive Director  
P +1 408 615 3443  
colin.feichtmeir@cushwake.com  
LIC #01298061

300 Santana Row, Fifth Floor  
San Jose, CA 95128  
main +1 408 615 3400  
**cushmanwakefield.com**

Cushman & Wakefield Copyright 2025. No warranty or representation, express or implied, is made to the accuracy or completeness of the information contained herein, and same is submitted subject to errors, omissions, change of price, rental or other conditions, withdrawal without notice, and to any special listing conditions imposed by the property owner(s). As applicable, we make no representation as to the condition of the property (or properties) in question.



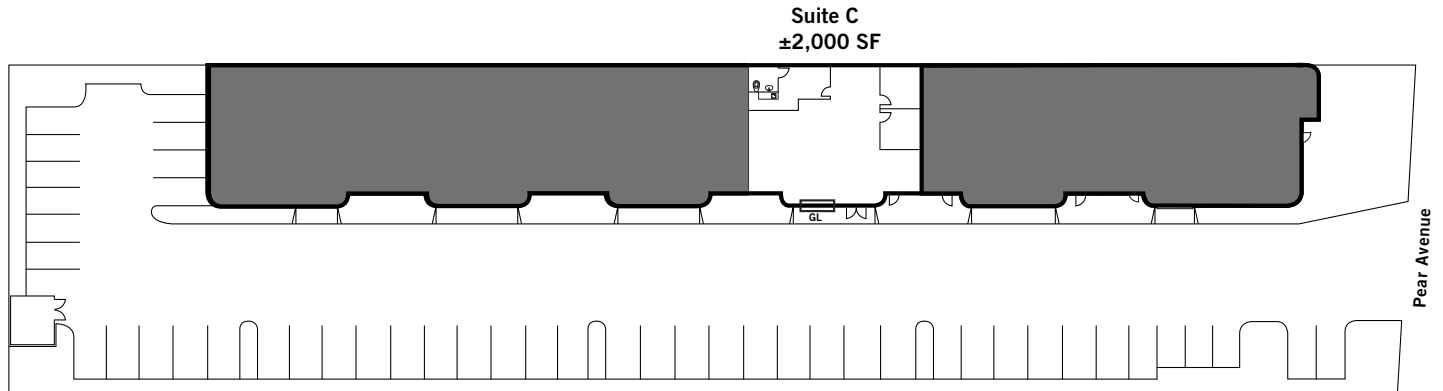
**CUSHMAN &  
WAKEFIELD**

FOR LEASE

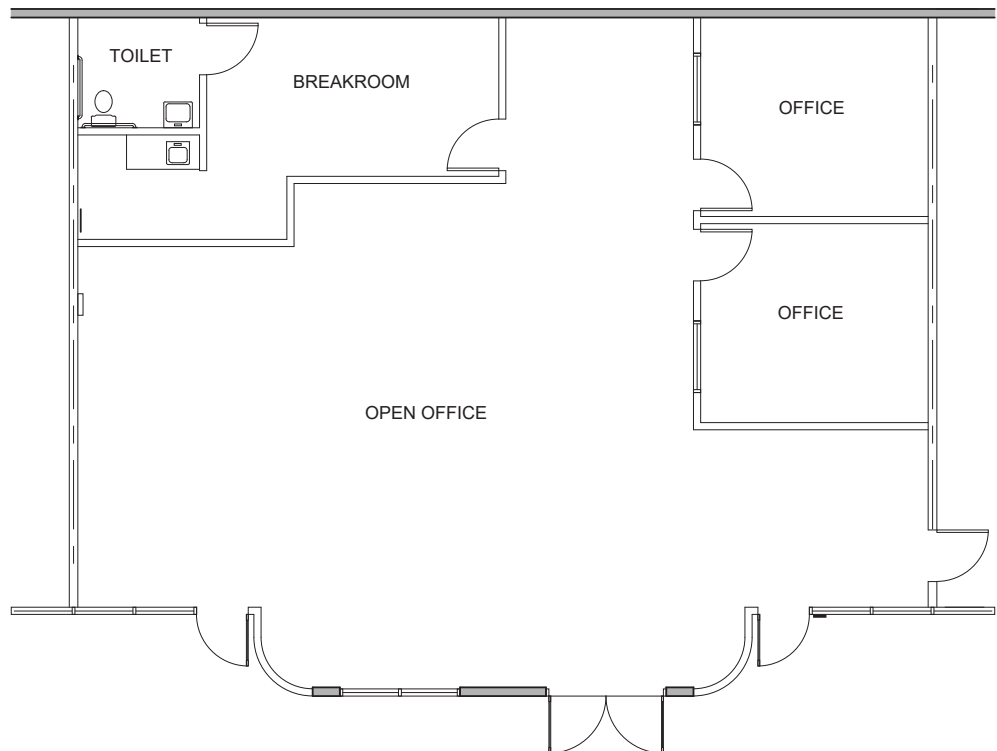
**1350 Pear Avenue**  
Mountain View, California

## FLOOR PLAN

Suite C |  $\pm 2,000$  SF



- 100% HVAC
- 100% Drop Ceiling
- Grade Level Access



**Colin Feichtmeir**  
Executive Director  
P +1 408 615 3443  
colin.feichtmeir@cushwake.com  
LIC #01298061

300 Santana Row, Fifth Floor  
San Jose, CA 95128  
main +1 408 615 3400  
[cushmanwakefield.com](http://cushmanwakefield.com)



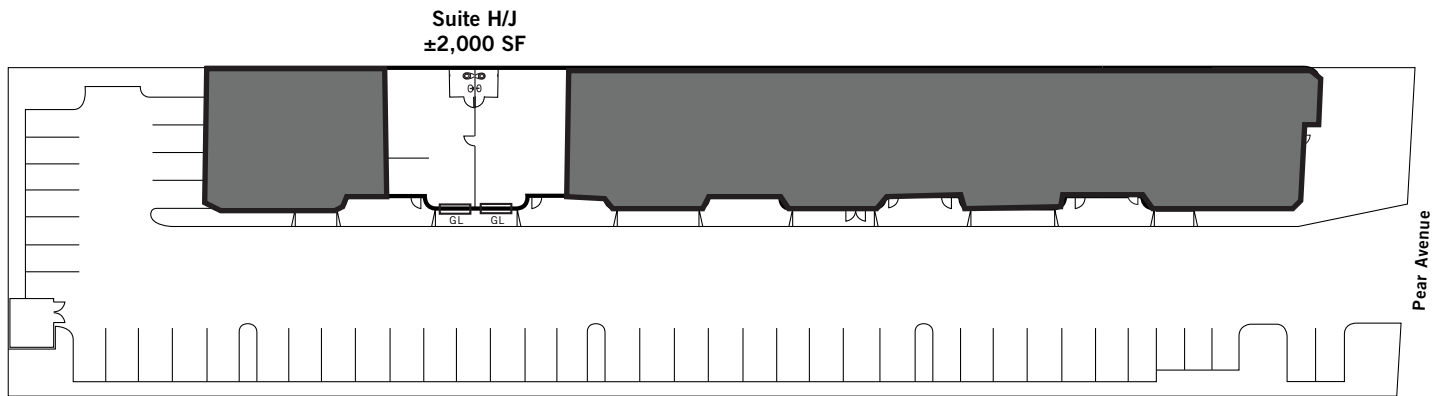
**CUSHMAN &  
WAKEFIELD**

FOR LEASE

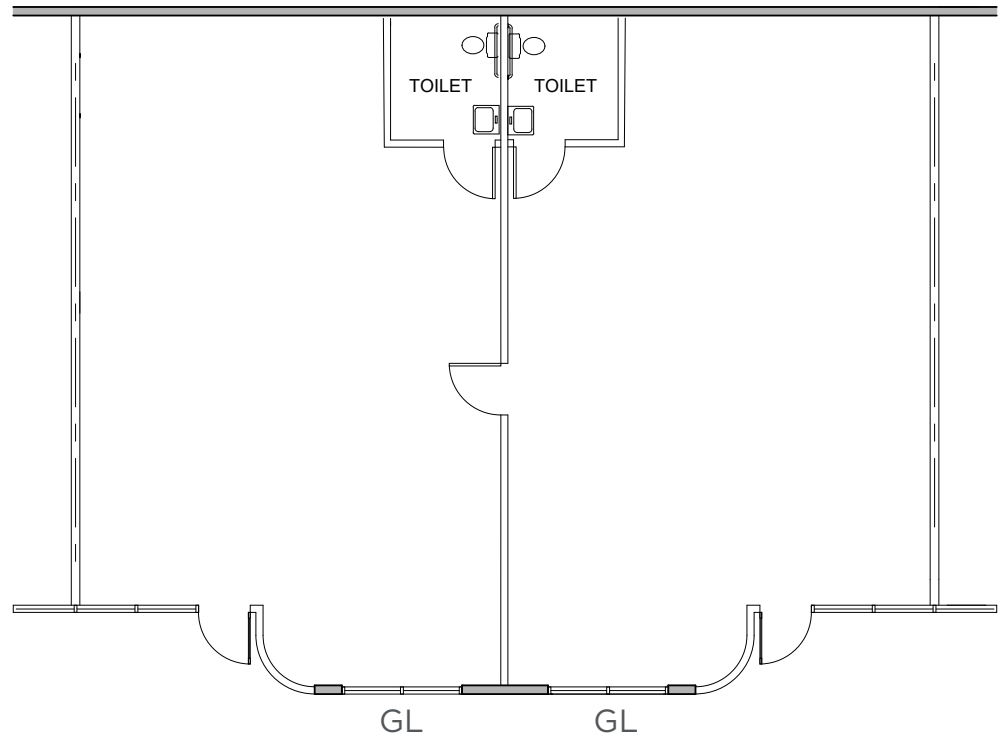
**1350 Pear Avenue**  
Mountain View, California

## FLOOR PLAN

Suite H/J |  $\pm 2,000$  SF



- 100% HVAC
- Open Ceiling
- 2 Grade Level Doors



**Colin Feichtmeir**  
Executive Director  
P +1 408 615 3443  
colin.feichtmeir@cushwake.com  
LIC #01298061

300 Santana Row, Fifth Floor  
San Jose, CA 95128  
main +1 408 615 3400  
[cushmanwakefield.com](http://cushmanwakefield.com)





FOR LEASE

**1350 Pear Avenue**

Mountain View, California

## LOCATION MAP



**Colin Feichtmeir**  
Executive Director  
P +1 408 615 3443  
colin.feichtmeir@cushwake.com  
LIC #01298061

300 Santana Row, Fifth Floor  
San Jose, CA 95128  
main +1 408 615 3400  
[cushmanwakefield.com](http://cushmanwakefield.com)

Cushman & Wakefield Copyright 2025. No warranty or representation, express or implied, is made to the accuracy or completeness of the information contained herein, and same is submitted subject to errors, omissions, change of price, rental or other conditions, withdrawal without notice, and to any special listing conditions imposed by the property owner(s). As applicable, we make no representation as to the condition of the property (or properties) in question.