



1,880 SF UP TO 25,143 SF

AVAILABLE FOR LEASE (WILL SUB-DIVIDE)

Property Highlights

- **1,880 SF up to 25,143 SF Available for Lease**
- **Space can be sub-divided**
- Corporate campus setting located in Oak Summit Business Park
- Custom upfitting available
- Ample parking
- Ground-level loading door(s)
- 12' - 14' clear height
- Current configuration is mostly office, but can be converted back to flex with roll up doors if needed

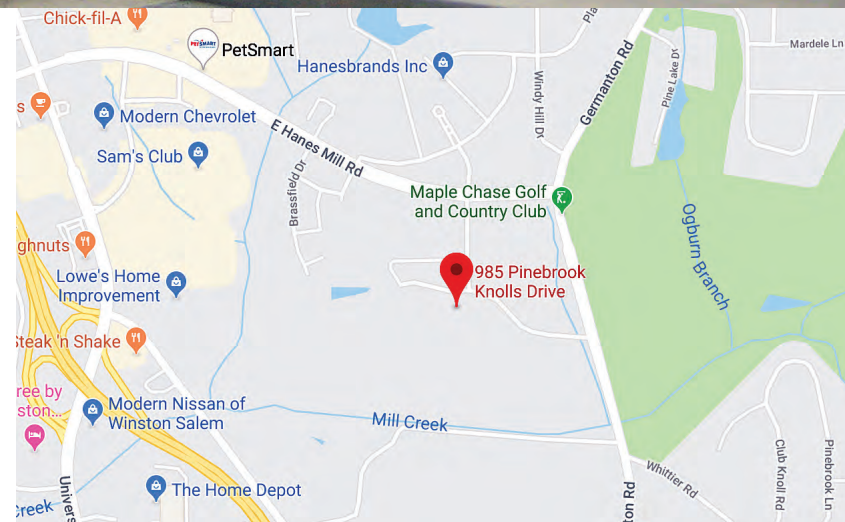
Bobby Finch

Executive Managing Director
+1 336 812 3303
bobby.finch@cushwake.com

Seth Constable

Senior Associate
+1 336 885 7815
seth.constable@cushwake.com

121-D Reynolda Village
Winston-Salem, NC 27106 | USA
Main +1 336 668 9999
Fax +1 336 668 0888
cushmanwakefield.com





969, 971, 975 & 985 Pinebrook Knolls Drive Winston-Salem, NC 27105



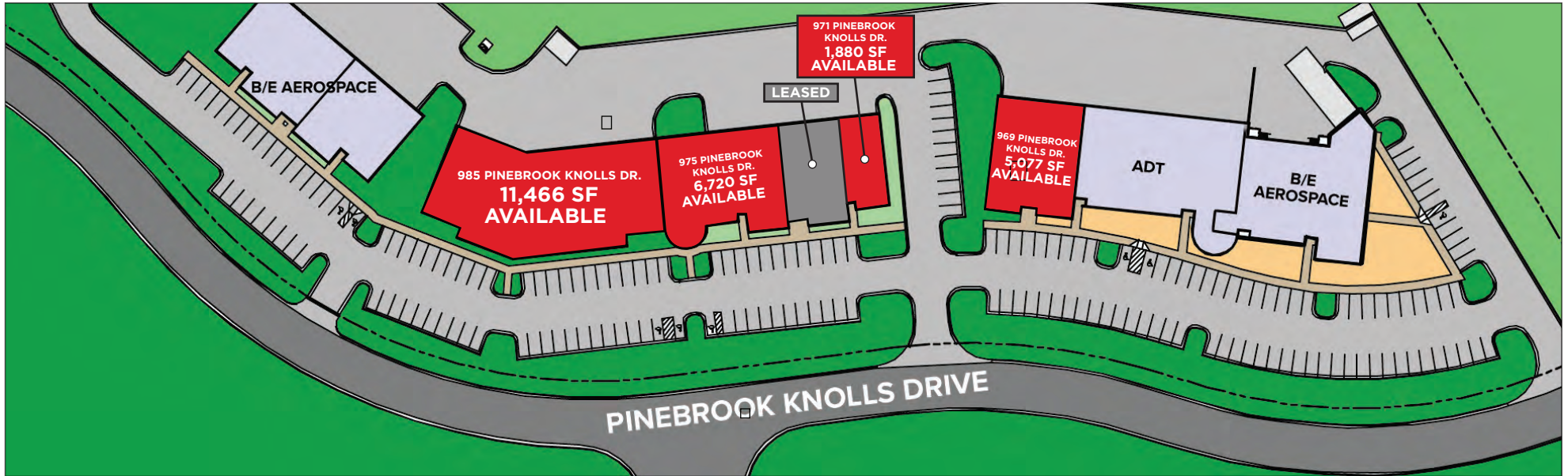
Bobby Finch
Executive Managing Director
+1 336 812 3303
bobby.finch@cushwake.com

Seth Constable
Senior Associate
+1 336 885 7815
seth.constable@cushwake.com

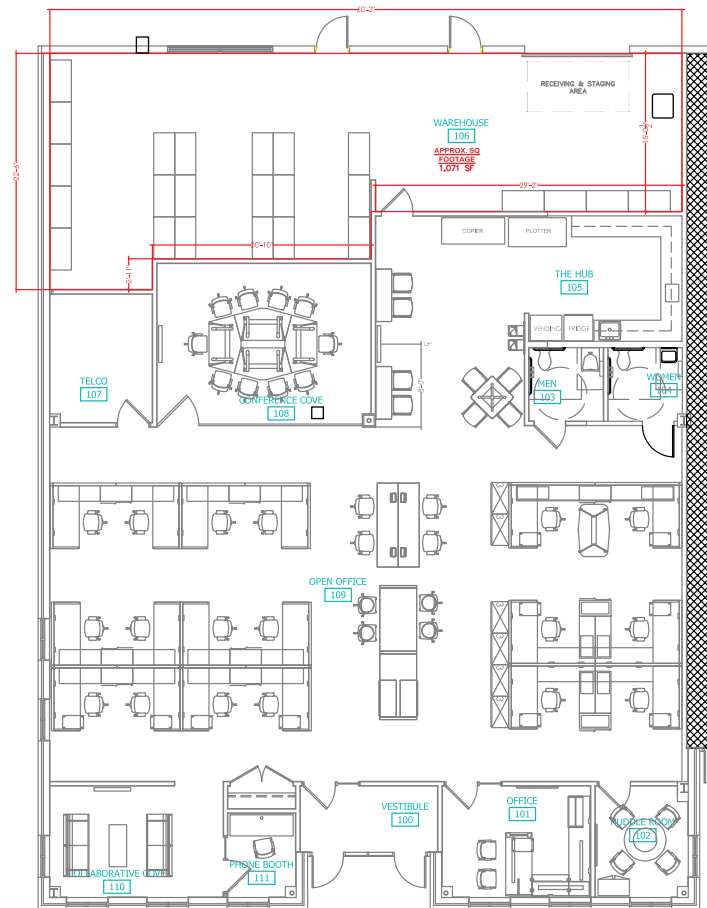
121-D Reynolda Village
Winston-Salem, NC 27106 | USA
Main +1 336 668 9999
Fax +1 336 668 0888
cushmanwakefield.com

969, 971, 975 & 985 Pinebrook Knolls Drive

Winston-Salem, NC 27105



969 PINEBROOK KNOLLS DR. FLOOR PLAN



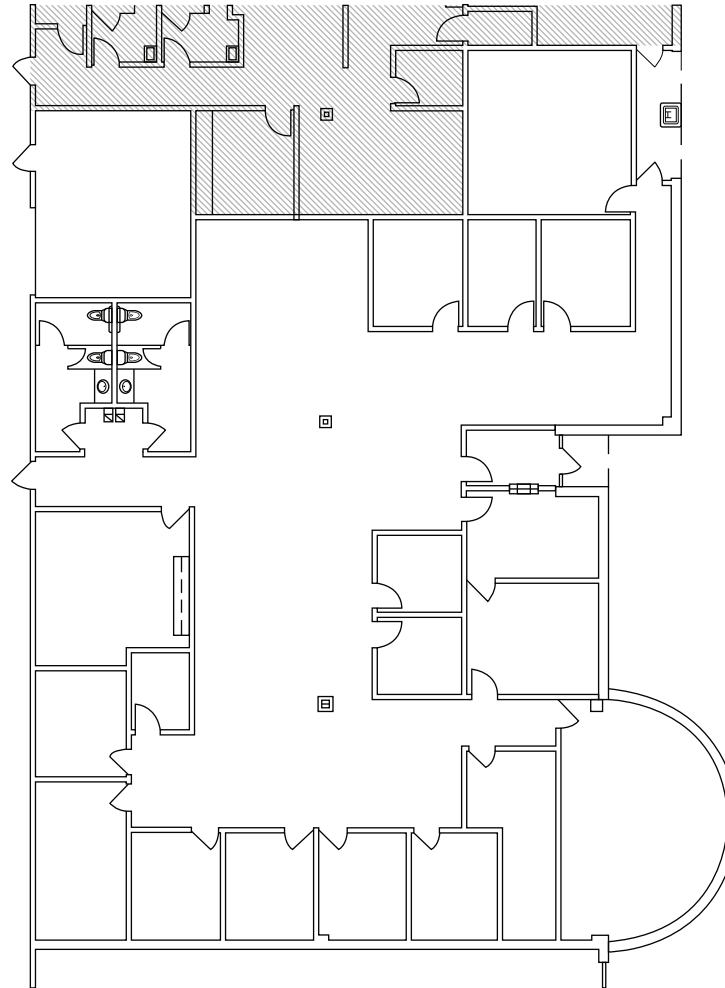
*Please note, some of the furniture has been removed

Bobby Finch
Executive Managing Director
+1 336 812 3303
bobby.finch@cushwake.com

Seth Constable
Senior Associate
+1 336 885 7815
seth.constable@cushwake.com

121-D Reynolda Village
Winston-Salem, NC 27106 | USA
Main +1 336 668 9999
Fax +1 336 668 0888
cushmanwakefield.com

975 PINEBROOK KNOLLS DR. FLOOR PLAN

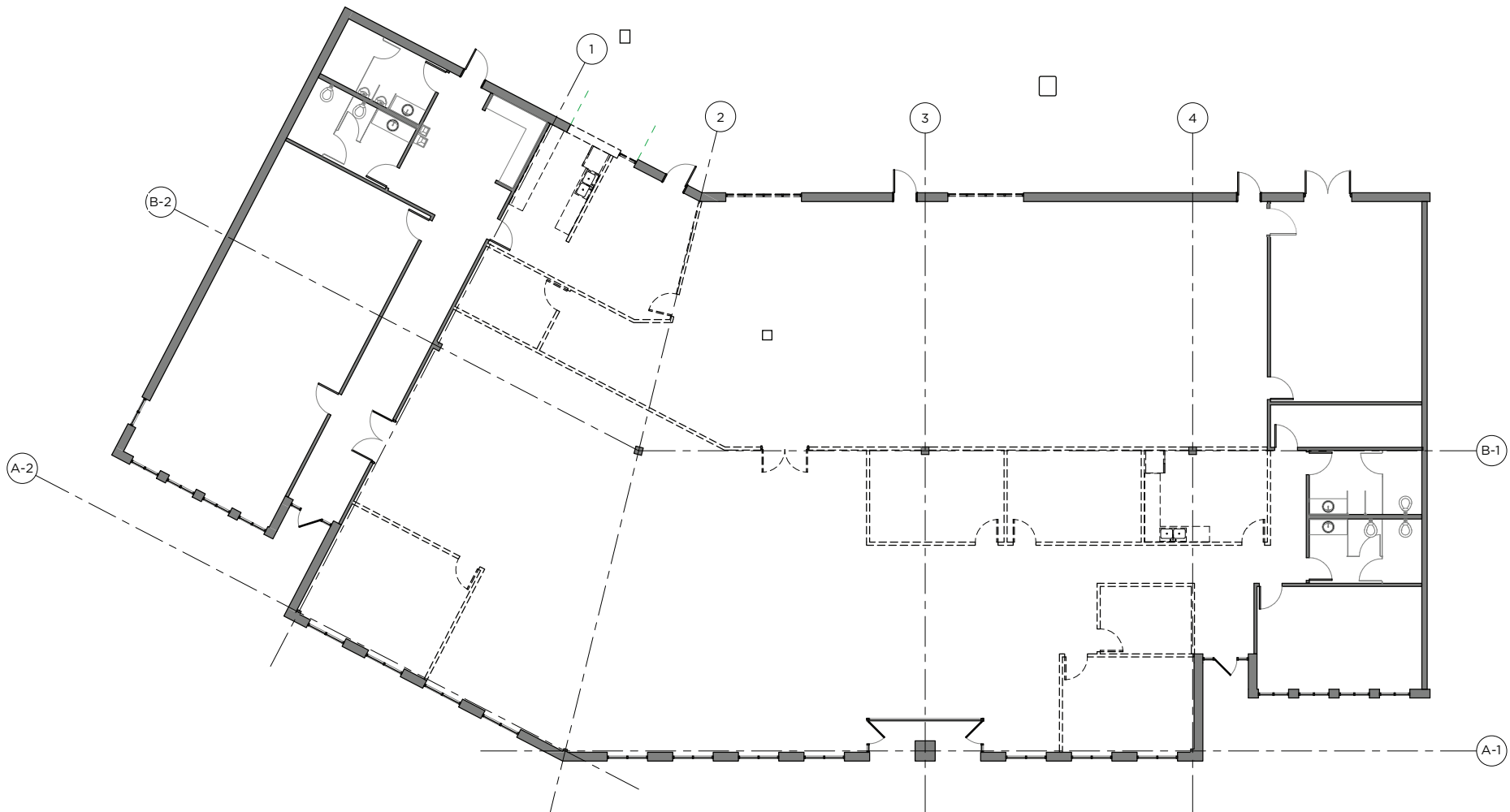


Bobby Finch
Executive Managing Director
+1 336 812 3303
bobby.finch@cushwake.com

Seth Constable
Senior Associate
+1 336 885 7815
seth.constable@cushwake.com

121-D Reynolda Village
Winston-Salem, NC 27106 | USA
Main +1 336 668 9999
Fax +1 336 668 0888
cushmanwakefield.com

985 PINEBROOK KNOLLS DR. CURRENT FLOOR PLAN



Bobby Finch
Executive Managing Director
+1 336 812 3303
bobby.finch@cushwake.com

Seth Constable
Senior Associate
+1 336 885 7815
seth.constable@cushwake.com

121-D Reynolda Village
Winston-Salem, NC 27106 | USA
Main +1 336 668 9999
Fax +1 336 668 0888
cushmanwakefield.com

**985 PINEBROOK KNOLLS DR.
TEST FIT EXAMPLE 1**



Bobby Finch
Executive Managing Director
+1 336 812 3303
bobby.finch@cushwake.com

Seth Constable
Senior Associate
+1 336 885 7815
seth.constable@cushwake.com

121-D Reynolda Village
Winston-Salem, NC 27106 | USA
Main +1 336 668 9999
Fax +1 336 668 0888
cushmanwakefield.com

985 PINEBROOK KNOLLS DR. TEST FIT EXAMPLE 2



Bobby Finch
Executive Managing Director
+1 336 812 3303
bobby.finch@cushwake.com

Seth Constable
Senior Associate
+1 336 885 7815
seth.constable@cushwake.com

121-D Reynolda Village
Winston-Salem, NC 27106 | USA
Main +1 336 668 9999
Fax +1 336 668 0888
cushmanwakefield.com