

6355
SCARLETT CT.
DUBLIN | CALIFORNIA

LIGHT INDUSTRIAL SPACE AVAILABLE FOR LEASE



BUSICK BUSINESS PARK

FOR LEASE | UNITS 1 & 12 | 3,000 & 2,500 SF

MARK DOWLING

Managing Director

+1 925 621 3844

mark.dowling@cushwake.com

Lic #01107108

FOR LEASE: LIGHT INDUSTRIAL SPACE AVAILABLE

6355
SCARLETT CT.
DUBLIN | CALIFORNIA

PROPERTY HIGHLIGHTS

- Unit 1: 3,000 SF
 - * Small office balance warehouse with fenced yard
 - * Lease Rate: \$2.00 Industrial Gross
- Unit 12: 2,500 SF
 - * One (1) restroom and balance warehouse
 - * Lease Rate: \$1.85 Industrial Gross
- Close proximity to I-580/I-680 interchange
- Zoning: M-1 Light Industrial ([Link Here](#))
- Note: Auto repair is permitted with a zoning clearance/minor use permit in the Scarlett Court Overlay Zoning District.
- Please see City of Dublin zoning administrator in the Planning Department for confirmation on intended business use.
- Please call broker for further information or to arrange a property tour.

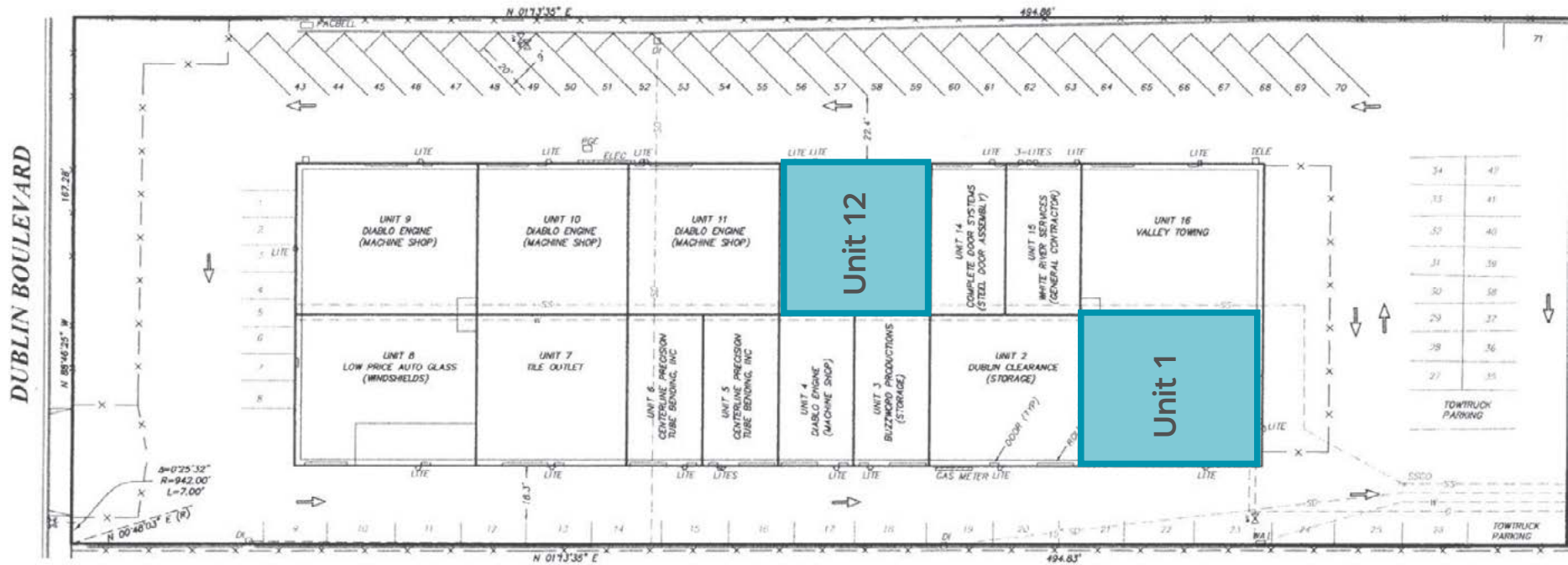
FOR LEASE: LIGHT INDUSTRIAL SPACE AVAILABLE

6355
SCARLETT CT.
DUBLIN | CALIFORNIA

SITE PLAN

Unit 1 – 3,000 SF

Unit 12 – 2,500 SF

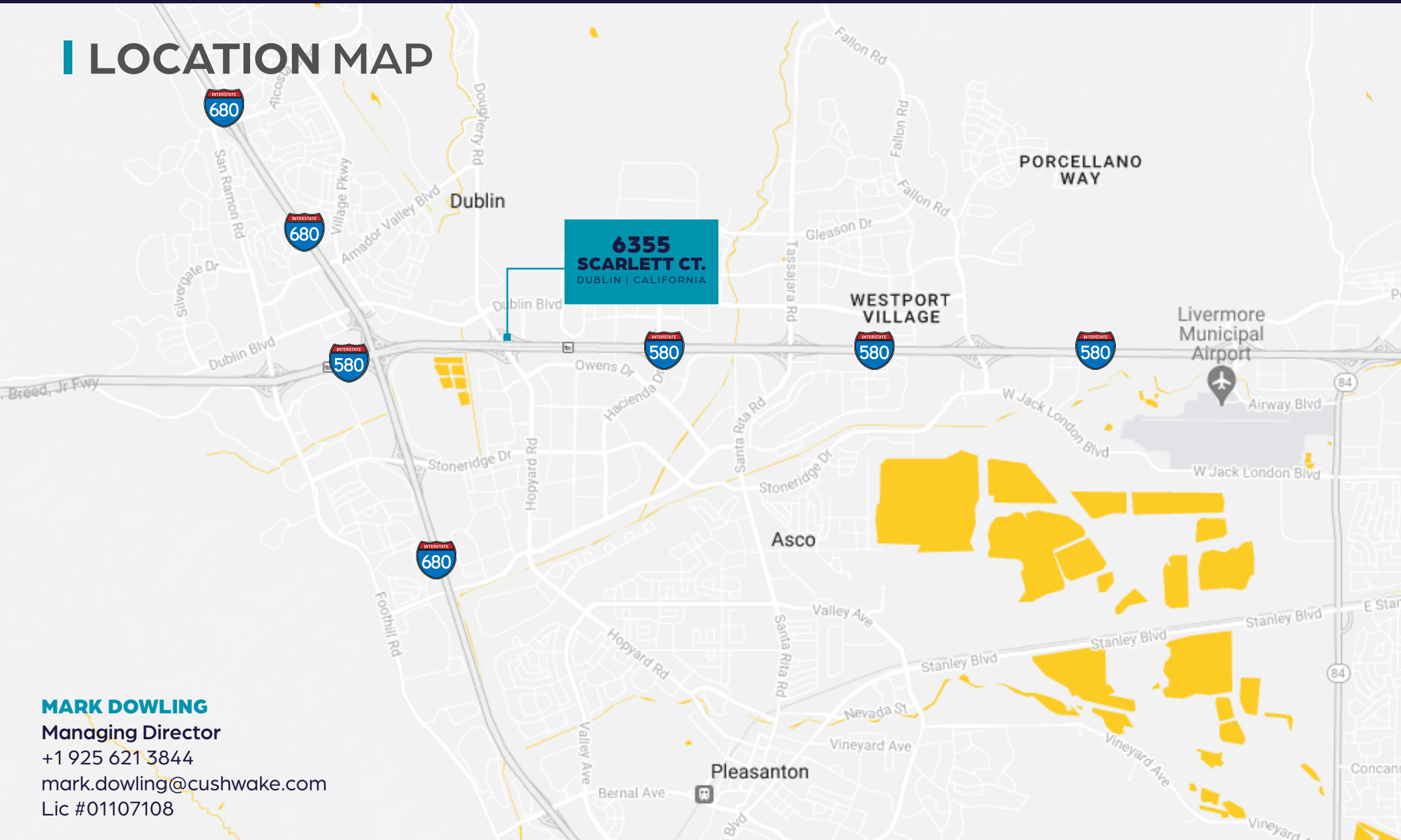


©2026 Cushman & Wakefield. All rights reserved. The information contained in this communication is strictly confidential. This information has been obtained from sources believed to be reliable but has not been verified. NO WARRANTY OR REPRESENTATION, EXPRESS OR IMPLIED, IS MADE AS TO THE CONDITION OF THE PROPERTY (OR PROPERTIES) REFERENCED HEREIN OR AS TO THE ACCURACY OR COMPLETENESS OF THE INFORMATION CONTAINED HEREIN, AND SAME IS SUBMITTED SUBJECT TO ERRORS, OMISSIONS, CHANGE OF PRICE, RENTAL OR OTHER CONDITIONS, WITHDRAWAL WITHOUT NOTICE, AND TO ANY SPECIAL LISTING CONDITIONS IMPOSED BY THE PROPERTY OWNER(S). ANY PROJECTIONS, OPINIONS OR ESTIMATES ARE SUBJECT TO UNCERTAINTY AND DO NOT SIGNIFY CURRENT OR FUTURE PROPERTY PERFORMANCE.

FOR LEASE: LIGHT INDUSTRIAL SPACE AVAILABLE

**6355
SCARLETT CT.**
DUBLIN | CALIFORNIA

LOCATION MAP



MARK DOWLING
Managing Director
+1 925 621 3844
mark.dowling@cushwake.com
Lic #01107108