



FOR SUBLEASE

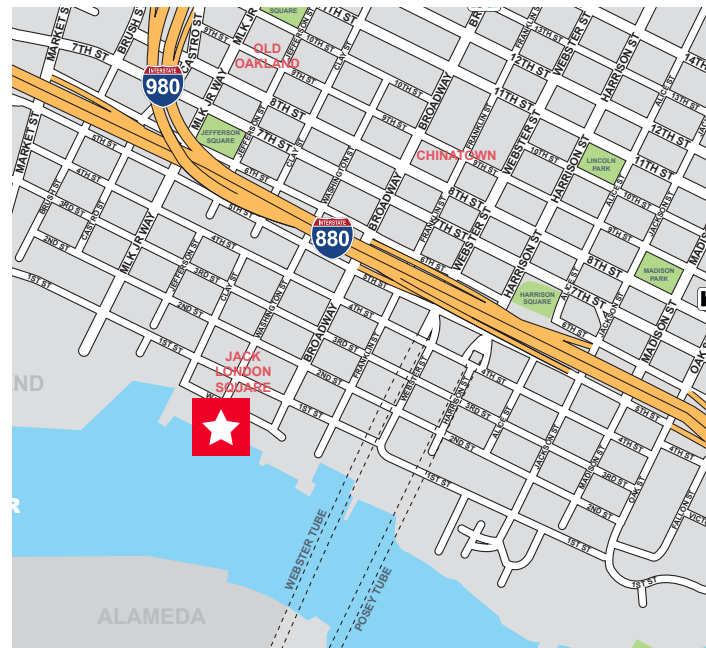
# 70 Washington Street

Jack London Square | Oakland, California



## Property Highlights

- ±2,595 SF Office Sublease Available With 10/31/2021 LED
- Excellent Waterfront Location Close to Numerous Food and Retail Amenities
- Great Access to Broadway B Shuttle, Freeway, Ferry Terminal and Amtrak Station
- Open to Short-Term Sublease
- \$3.00 FSG
- Available 7/14/18



### Charlie Sweeney

Associate

+1 510 267 6021

charlie.sweeney@cushwake.com

LIC #01987199

555 12th Street, Suite 1400

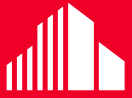
Oakland, CA 94607

main +1 510 465 8000

fax +1 510 465 1350

**cushmanwakefield.com**

Cushman & Wakefield Copyright 2015. No warranty or representation, express or implied, is made to the accuracy or completeness of the information contained herein, and same is submitted subject to errors, omissions, change of price, rental or other conditions, withdrawal without notice, and to any special listing conditions imposed by the property owner(s). As applicable, we make no representation as to the condition of the property (or properties) in question.



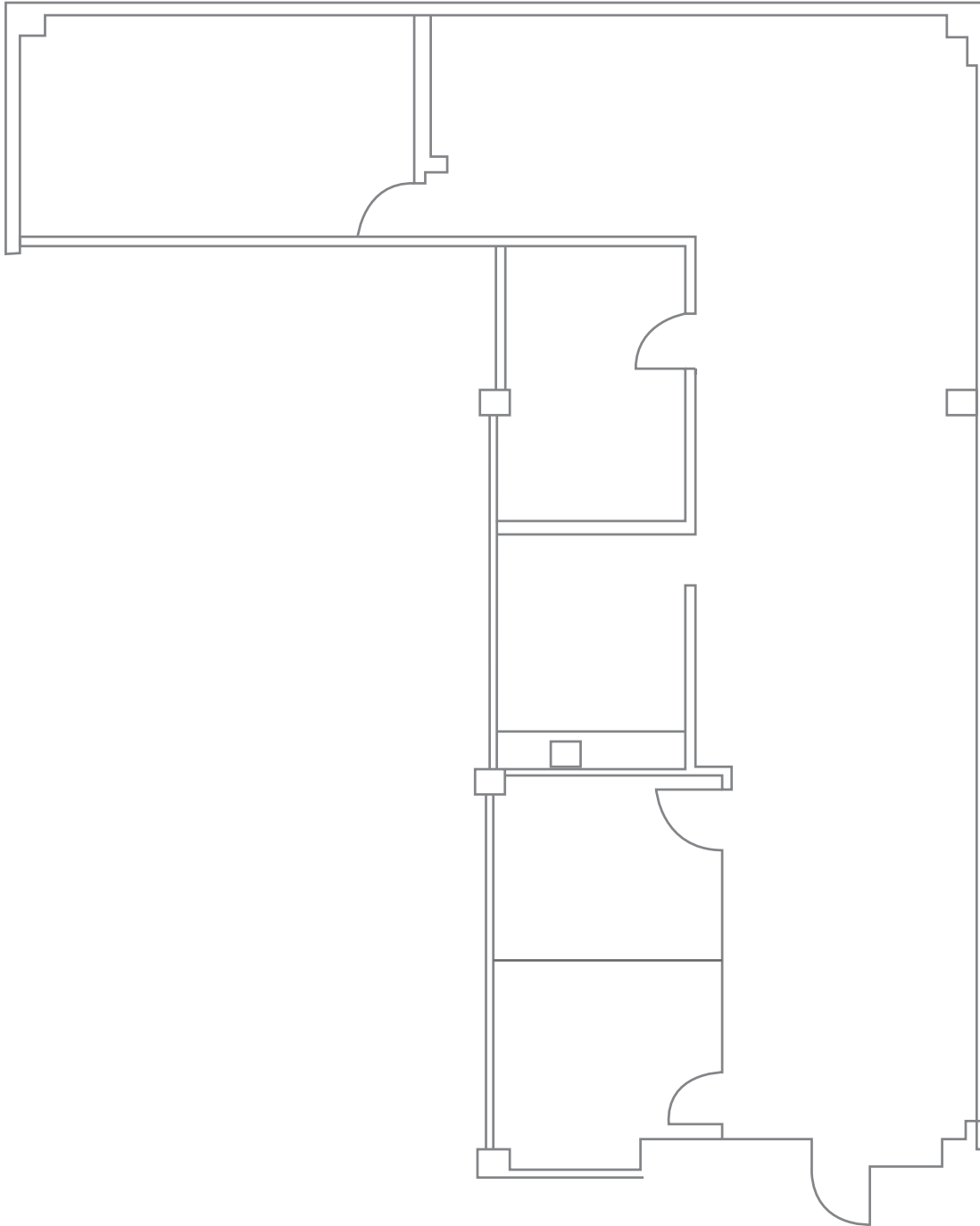
**CUSHMAN &  
WAKEFIELD**

FOR SUBLEASE

**70 Washington Street**

Jack London Square | Oakland, California

## Floor Plan



### **Charlie Sweeney**

Associate

+1 510 267 6021

[charlie.sweeney@cushwake.com](mailto:charlie.sweeney@cushwake.com)

LIC #01987199

555 12th Street, Suite 1400

Oakland, CA 94607

main +1 510 465 8000

fax +1 510 465 1350

**[cushmanwakefield.com](http://cushmanwakefield.com)**

Cushman & Wakefield Copyright 2015. No warranty or representation, express or implied, is made to the accuracy or completeness of the information contained herein, and same is submitted subject to errors, omissions, change of price, rental or other conditions, withdrawal without notice, and to any special listing conditions imposed by the property owner(s). As applicable, we make no representation as to the condition of the property (or properties) in question.



**CUSHMAN &  
WAKEFIELD**

FOR SUBLEASE

**70 Washington Street**

**Jack London Square | Oakland, California**

## Gallery



### **Charlie Sweeney**

Associate

+1 510 267 6021

[charlie.sweeney@cushwake.com](mailto:charlie.sweeney@cushwake.com)

LIC #01987199

555 12th Street, Suite 1400

Oakland, CA 94607

main +1 510 465 8000

fax +1 510 465 1350

**[cushmanwakefield.com](http://cushmanwakefield.com)**

Cushman & Wakefield Copyright 2015. No warranty or representation, express or implied, is made to the accuracy or completeness of the information contained herein, and same is submitted subject to errors, omissions, change of price, rental or other conditions, withdrawal without notice, and to any special listing conditions imposed by the property owner(s). As applicable, we make no representation as to the condition of the property (or properties) in question.