



# JACK LONDON SQ

OAKLAND, CALIFORNIA

energy fun waterfront culture  
living views food community play  
fasty waves sunrise ideal bike dining stroll breeze  
y breeze shopping work easy fresh run  
entertainment easy green chat  
cess green chat  
o serene culture fresh run  
kayak wine

## 66 FRANKLIN STREET



SUITE/FLOOR	RSF	DIVISIBLE	FULL SERVICE RENTAL RATE
Suite 210	7,076	N/A	Negotiable

[HOME](#)
[AVAILABILITY](#)
[OVERVIEW](#)
[LOCATION](#)
[66 FRANKLIN](#)
[70 WASHINGTON](#)

## 70 WASHINGTON STREET



SUITE/FLOOR	RSF	DIVISIBLE	FULL SERVICE RENTAL RATE
Suite 320	1,750	N/A	Negotiable

**Ryan Hattersley**  
Executive Managing Director  
ryan.hattersley@cushwake.com  
+1 510 891 5802  
Lic #01354553

**Daniel Bisabri**  
Executive Director  
daniel.bisabri@cushwake.com  
+1 510 891 5801  
Lic #01754122

Cushman & Wakefield.  
555 12th Street Suite 1400  
Oakland, CA 94607  
Lic #00616335

# JACK LONDON SQ

Water Ferry



Waterfront Dining Forge



Heinholds' First  
and Last Chance



Access to Miles of  
Waterfront Trails & Parks



Oakland A's



Click on the image above to  
see an exciting video about our  
newest tenant to Jack London  
Square - play ball!

Marina



Bay and San  
Francisco Views



Plank



Waterfront Hotel



Free "B" Shuttle to BART



HOME

AVAILABILITY

OVERVIEW

LOCATION

66 FRANKLIN

70 WASHINGTON

## Ryan Hattersley

Executive Managing Director  
ryan.hattersley@cushwake.com  
+1 510 891 5802  
Lic #01354553

## Daniel Bisabri

Executive Director  
daniel.bisabri@cushwake.com  
+1 510 891 5801  
Lic #01754122

Cushman & Wakefield.  
555 12th Street Suite 1400  
Oakland, CA 94607  
Lic #00616335



# JACK LONDON SQ

70 WASHINGTON



66 FRANKLIN



HOME

AVAILABILITY

OVERVIEW

LOCATION

66 FRANKLIN

70 WASHINGTON

## Ryan Hattersley

Executive Managing Director  
ryan.hattersley@cushwake.com  
+1 510 891 5802  
Lic #01354553

## Daniel Bisabri

Executive Director  
daniel.bisabri@cushwake.com  
+1 510 891 5801  
Lic #01754122

Cushman & Wakefield.  
555 12th Street Suite 1400  
Oakland, CA 94607  
Lic #00616335

# JACK LONDON SQ

HOME

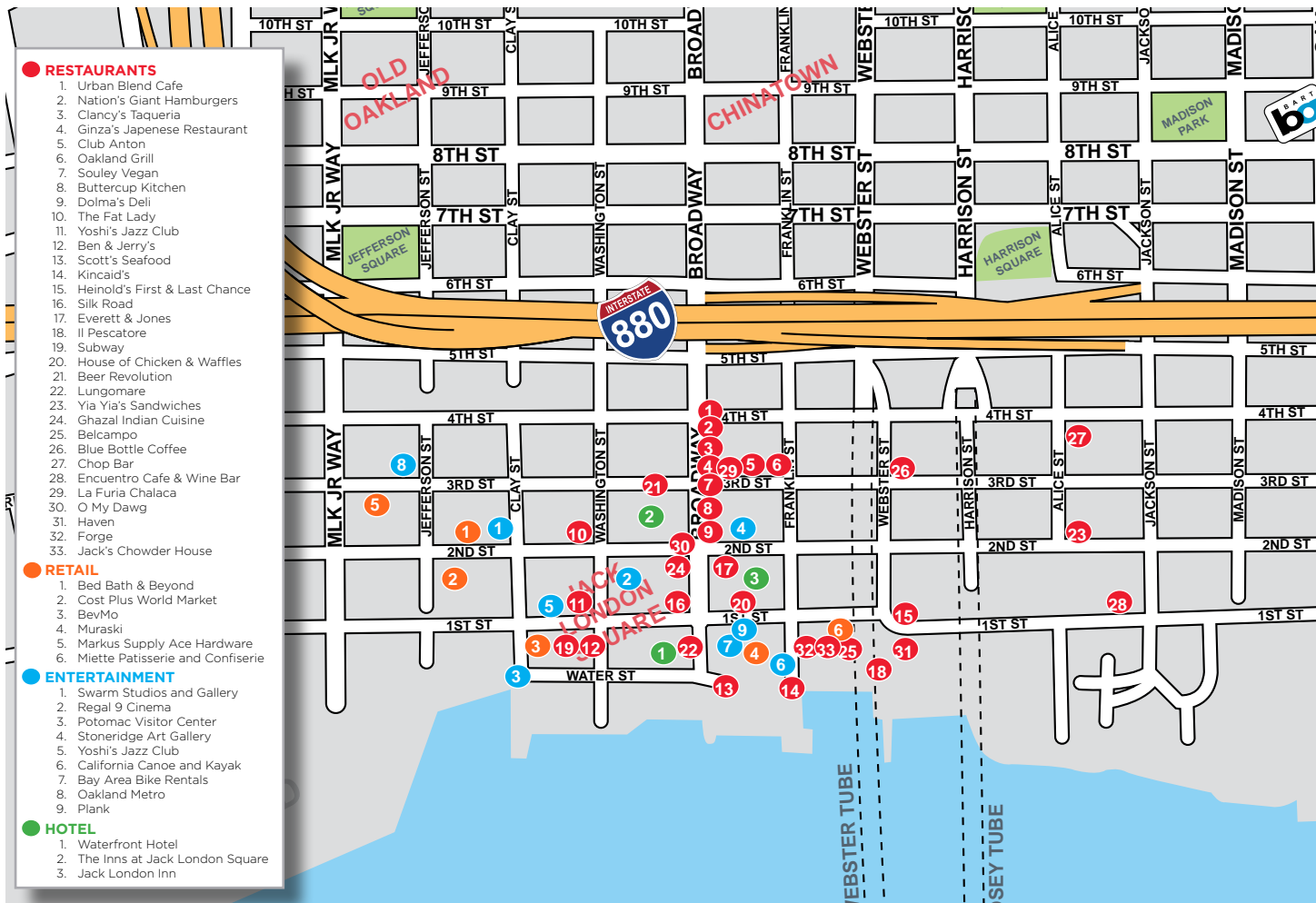
AVAILABILITY

OVERVIEW

LOCATION

66 FRANKLIN

70 WASHINGTON



**Ryan Hattersley**  
Executive Managing Director  
ryan.hattersley@cushwake.com  
+1 510 891 5802  
Lic #01354553

**Daniel Bisabri**  
Executive Director  
daniel.bisabri@cushwake.com  
+1 510 891 5801  
Lic #01754122

Cushman & Wakefield.  
555 12th Street Suite 1400  
Oakland, CA 94607  
Lic #00616335



# JACK LONDON SQ

55 Harrison Street  
Surface Lot  
\$110/stall/month

55 Harrison Street  
Garage  
\$160/stall/month

70 Washington Street  
Surface Lot  
\$95/stall/month

Washington Street Garage  
\$140/month on levels 1-4  
\$85/month on levels 5-7

2nd Street Surface Lot  
\$78/stall/month

Daily Parking  
Available



HOME

AVAILABILITY

OVERVIEW

LOCATION

66 FRANKLIN

70 WASHINGTON

**Ryan Hattersley**  
Executive Managing Director  
ryan.hattersley@cushwake.com  
+1 510 891 5802  
Lic #01354553

**Daniel Bisabri**  
Executive Director  
daniel.bisabri@cushwake.com  
+1 510 891 5801  
Lic #01754122

**Cushman & Wakefield.**  
555 12th Street Suite 1400  
Oakland, CA 94607  
Lic #00616335

- HOME
- AVAILABILITY
- OVERVIEW
- LOCATION
- 66 FRANKLIN
- 70 WASHINGTON



The B is free and connects Uptown, City Center, Chinatown and Jack London Square all together.

The Free “B” can also be tracked on Nextbus.com, allowing users to track exactly when the next shuttle will be at the desired location and where it is at that particular moment in time.

Cushman & Wakefield.  
555 12th Street Suite 1400  
Oakland, CA 94607  
Lic #00616335



## 66 FRANKLIN

±7,076 RSF AVAILABLE



HOME

AVAILABILITY

OVERVIEW

LOCATION

66 FRANKLIN

70 WASHINGTON

### Ryan Hattersley

Executive Managing Director  
ryan.hattersley@cushwake.com  
+1 510 891 5802  
Lic #01354553

### Daniel Bisabri

Executive Director  
daniel.bisabri@cushwake.com  
+1 510 891 5801  
Lic #01754122

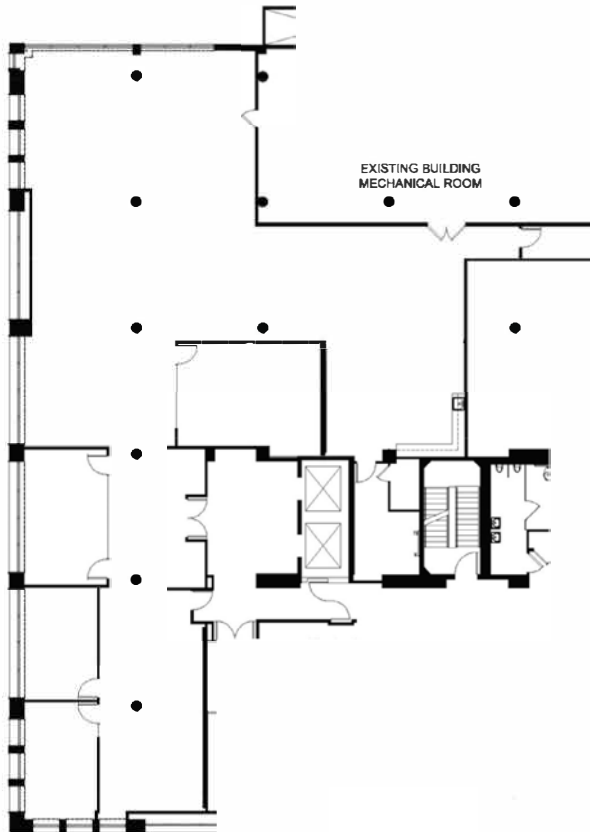
Cushman & Wakefield.  
555 12th Street Suite 1400  
Oakland, CA 94607  
Lic #00616335



## 66 FRANKLIN

±7,076 RSF AVAILABLE

### SUITE 210



- ±7,076 RSF
- Available Now
- Creative space
- High ceilings, exposed duct work, concrete flooring and carpet
- Negotiable rental rate

HOME

AVAILABILITY

OVERVIEW

LOCATION

66 FRANKLIN

70 WASHINGTON

#### Ryan Hattersley

Executive Managing Director  
ryan.hattersley@cushwake.com  
+1 510 891 5802  
Lic #01354553

#### Daniel Bisabri

Executive Director  
daniel.bisabri@cushwake.com  
+1 510 891 5801  
Lic #01754122

Cushman & Wakefield.  
555 12th Street Suite 1400  
Oakland, CA 94607  
Lic #00616335

# 70 WASHINGTON

±1,750 RSF AVAILABLE

HOME

AVAILABILITY

OVERVIEW

LOCATION

66 FRANKLIN

70 WASHINGTON

**Ryan Hattersley**

Executive Managing Director  
ryan.hattersley@cushwake.com  
+1 510 891 5802  
Lic #01354553

**Daniel Bisabri**

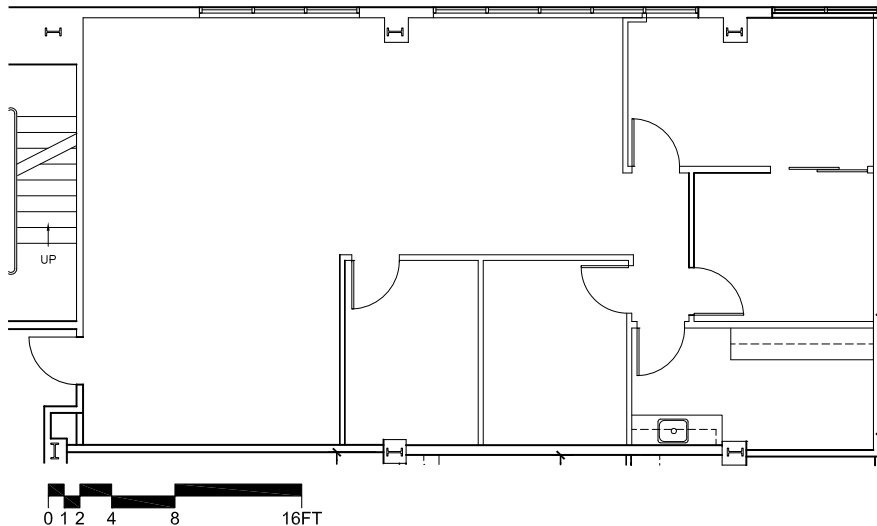
Executive Director  
daniel.bisabri@cushwake.com  
+1 510 891 5801  
Lic #01754122

Cushman & Wakefield.  
555 12th Street Suite 1400  
Oakland, CA 94607  
Lic #00616335

## 70 WASHINGTON

±1,750 RSF AVAILABLE

### SUITE 320



- ±1,750 RSF
- Available Now
- 4 Private offices
- Kitchen
- Open space for workstations
- North facing suite with City views and good natural light

HOME

AVAILABILITY

OVERVIEW

LOCATION

66 FRANKLIN

70 WASHINGTON

**Ryan Hattersley**  
Executive Managing Director  
ryan.hattersley@cushwake.com  
+1 510 891 5802  
Lic #01354553

**Daniel Bisabri**  
Executive Director  
daniel.bisabri@cushwake.com  
+1 510 891 5801  
Lic #01754122

Cushman & Wakefield.  
555 12th Street Suite 1400  
Oakland, CA 94607  
Lic #00616335



The logo for Jack London Square is centered in the lower half of the image. It consists of the words "JACK", "LONDON", and "SQ" stacked vertically in a bold, white, sans-serif font. The text is enclosed within a thin white square border.

# JACK LONDON SQ

**510-645-9292    [www.jacklondonsquare.com](http://www.jacklondonsquare.com)    Broadway and Embarcadero    Oakland, CA**

©2018 Cushman & Wakefield. All rights reserved. The information contained in this communication is strictly confidential. This information has been obtained from sources believed to be reliable but has not been verified. NO WARRANTY OR REPRESENTATION, EXPRESS OR IMPLIED, IS MADE AS TO THE CONDITION OF THE PROPERTY (OR PROPERTIES) REFERENCED HEREIN OR AS TO THE ACCURACY OR COMPLETENESS OF THE INFORMATION CONTAINED HEREIN, AND SAME IS SUBMITTED SUBJECT TO ERRORS, OMISSIONS, CHANGE OF PRICE, RENTAL OR OTHER CONDITIONS, WITHDRAWAL WITHOUT NOTICE, AND TO ANY SPECIAL LISTING CONDITIONS IMPOSED BY THE PROPERTY OWNER(S). ANY PROJECTIONS, OPINIONS OR ESTIMATES ARE SUBJECT TO UNCERTAINTY AND DO NOT SIGNIFY CURRENT OR FUTURE PROPERTY PERFORMANCE.