



PACIFIC PLAZA

14100 San Pedro Ave, San Antonio, TX 78232

FOR LEASE



Contact Information:

Bryan Sethney

Managing Director

+1 210 305 4280

bryan.sethney@cushwake.com

4040 Broadway, Suite 602
San Antonio, TX 78209

cushmanwakefield.com

PACIFIC PLAZA

14100 San Pedro Ave, San Antonio, TX 78232

For Lease

PROPERTY HIGHLIGHTS

Pacific Plaza is a 7-story, 101,559 SF, class A office Building in North Central San Antonio, with a beautiful 3-story lobby with marble flooring and modern lobby furniture.

RENT

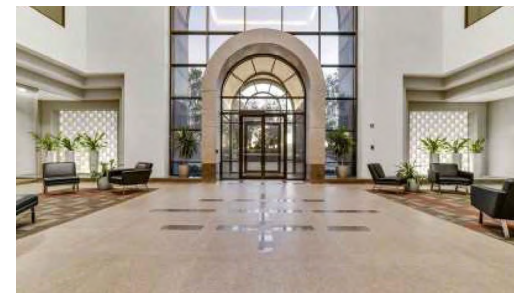
\$28.00/SF/Yr.

PARKING

3.5/1,000

BUILDING FEATURES

- 670 square-foot building conference room
- Janitorial service 5 nights per week and on-site patrol
- On-site building maintenance and day porter
- 24/7 building access with card access after hours
- Surface parking and garage parking at 3.5/1000 SF
- Covered reserved parking at \$35 per space per month



PACIFIC PLAZA

14100 San Pedro Ave, San Antonio, TX 78232

SPACE AVAILABLE

For Lease

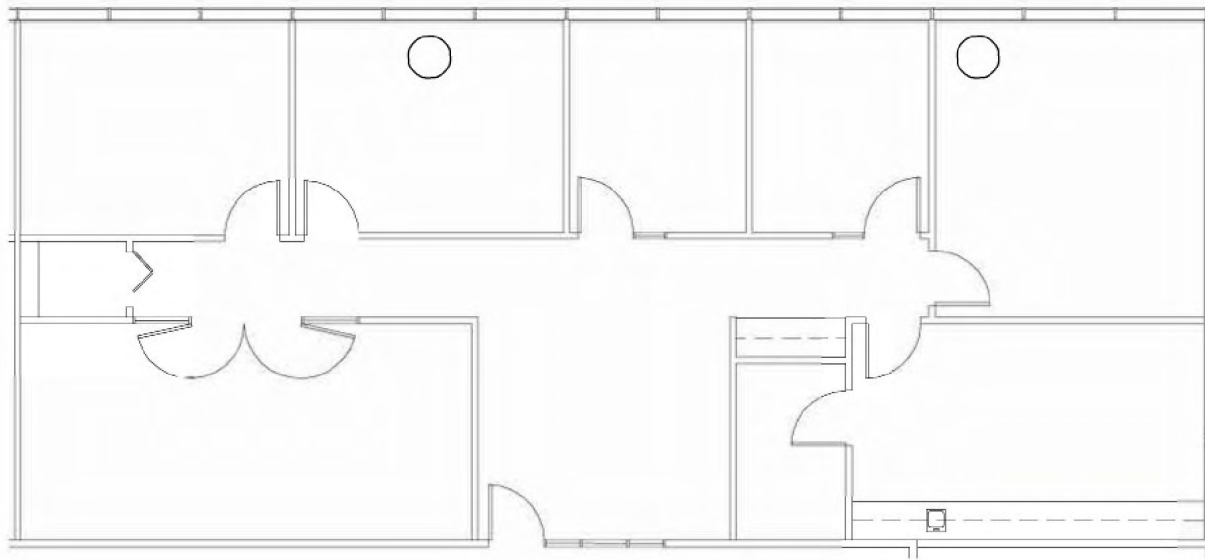
SPACE	SPACE USE	LEASE RATE	LEASE TYPE	SIZE (RSF)
Suite 310	Office	\$28.00/SF/Yr	Full Service	2,207 RSF
Suite 316	Office	\$28.00/SF/Yr	Full Service	2,738 RSF
Suite 320	Office	\$28.00/SF/Yr	Full Service	1,176 RSF
Suite 410	Office	\$28.00/SF/Yr	Full Service	4,764 RSF
Suite 600	Office	\$28.00/SF/Yr	Full Service	3,341 RSF
Suite 602	Office	\$28.00/SF/Yr	Full Service	1,552 RSF
Suite 604	Office	\$28.00/SF/Yr	Full Service	2,842 RSF
Suite 611	Office	\$28.00/SF/Yr	Full Service	1,754 RSF

*Suite 600, 602, 604, & 611 can be combined for a total of 9,489 RSF

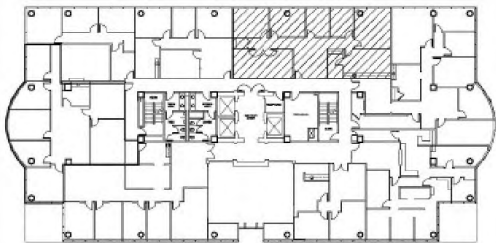


FLOORPLAN

Available: Suite 310 - 2,207 SF



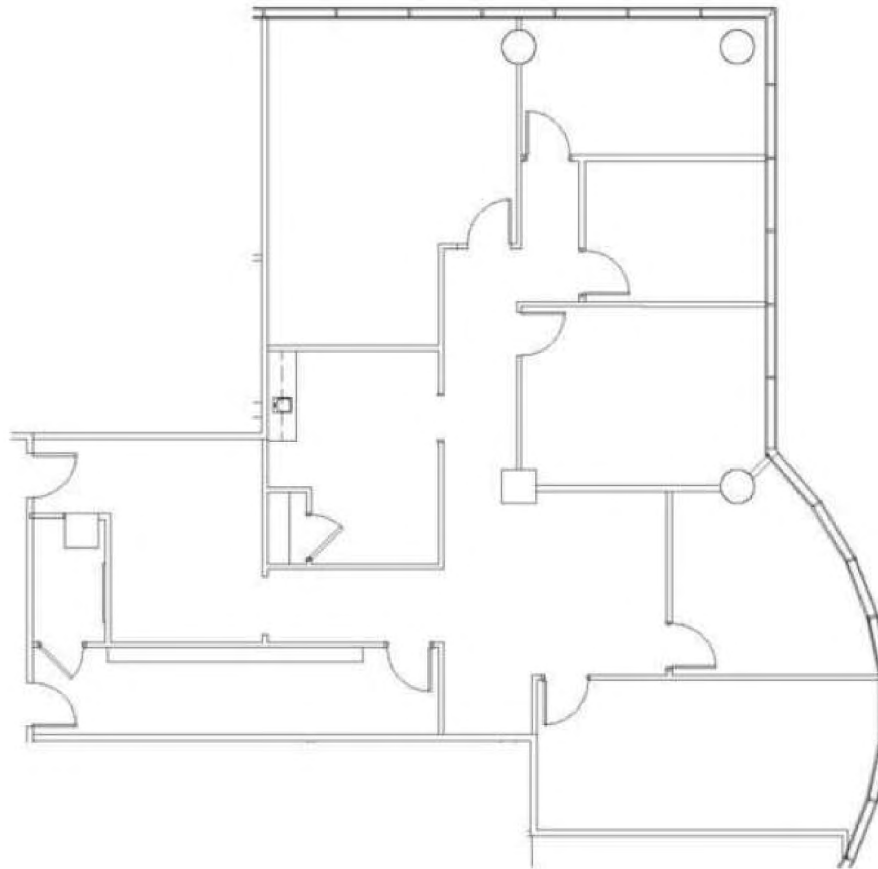
SCALE: 3/32" = 1'-0"



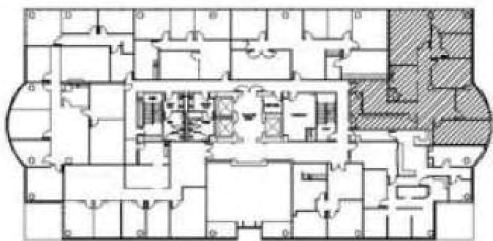
LEVEL 3 LOCATION PLAN

FLOORPLAN

Available: Suite 316 - 2,738 SF



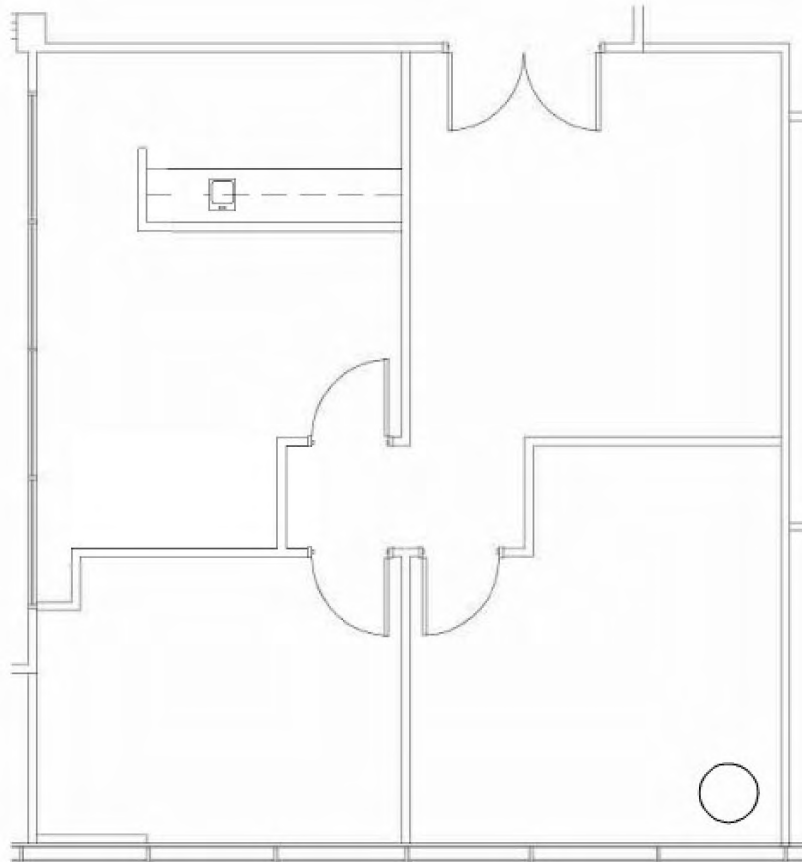
SCALE 3/32" = 1'-0"



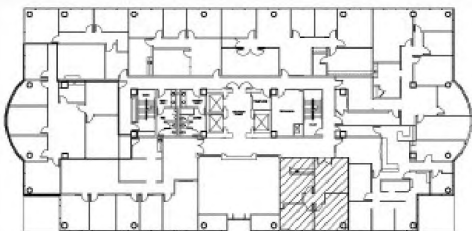
LEVEL 3 LOCATION PLAN

FLOORPLAN

Available: Suite 320 - 1,176 SF



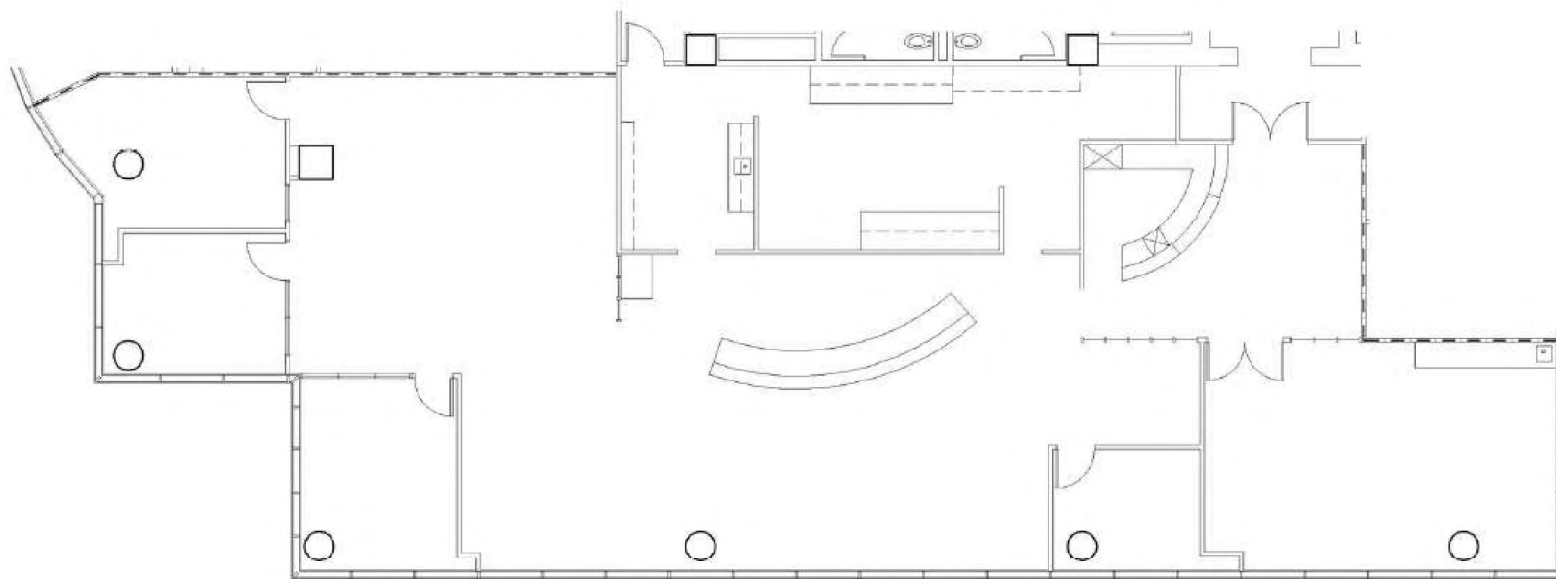
SCALE 1/8" = 1'-0"



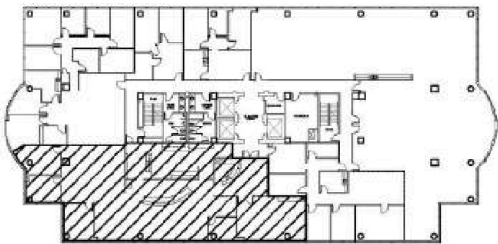
LEVEL 3 LOCATION PLAN

FLOORPLAN

Available: Suite 410 - 4,764 SF



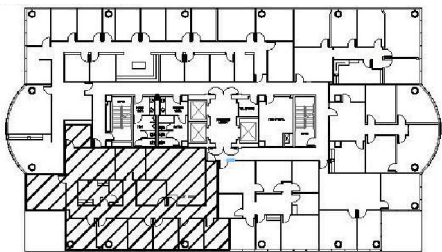
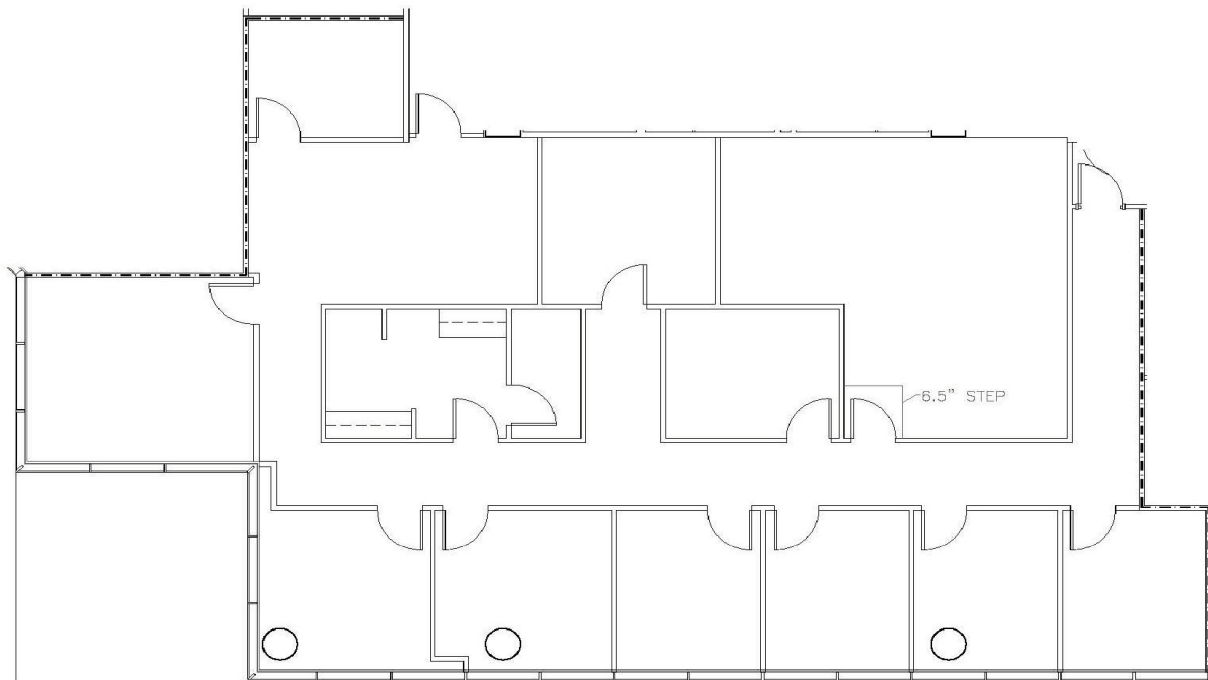
SCALE: N.T.S



LOCATION PLAN

FLOORPLAN

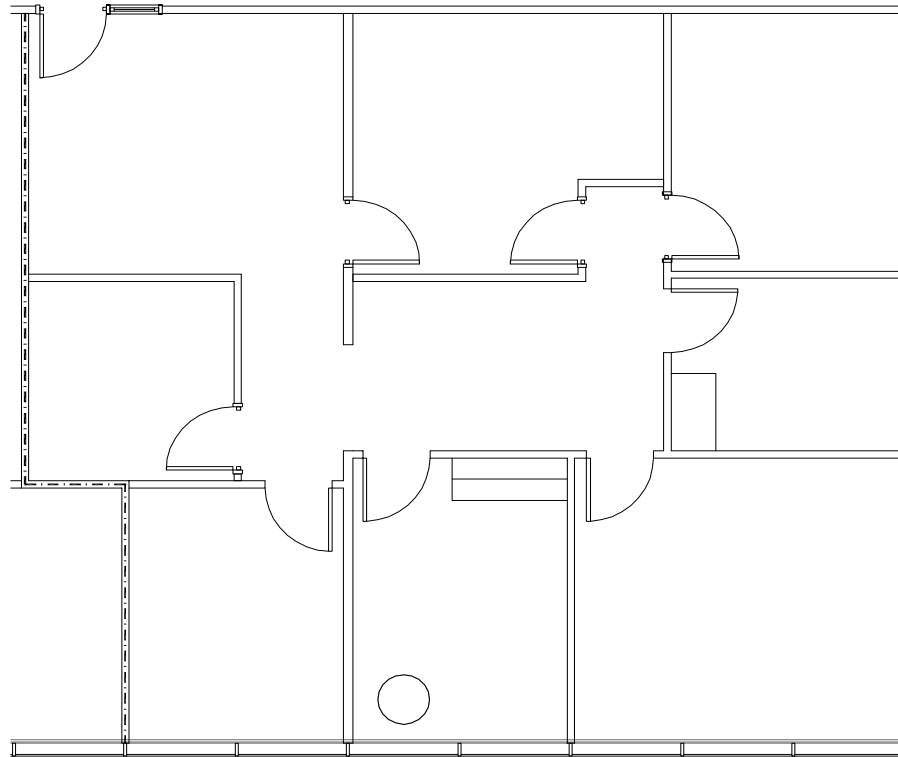
Available: Suite 600 - 3,341 SF



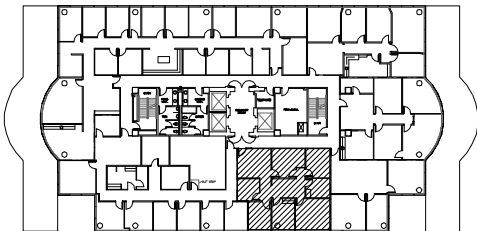
LOCATION PLAN

FLOORPLAN

Available: Suite 602 - 1,552 SF



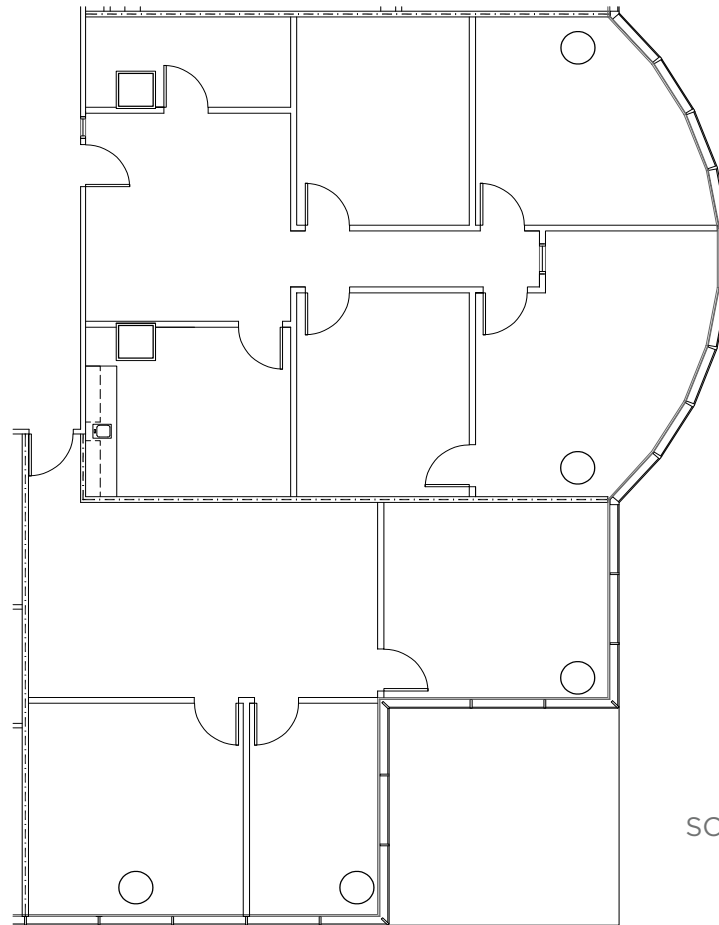
SCALE: 1/8" = 1'-0"



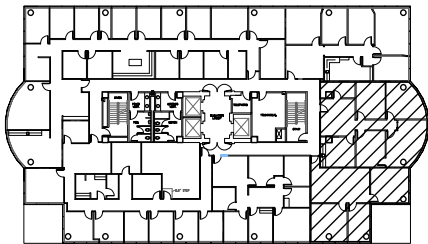
LEVEL 6 LOCATION PLAN

FLOORPLAN

Available: Suite 604 - 2,842 SF



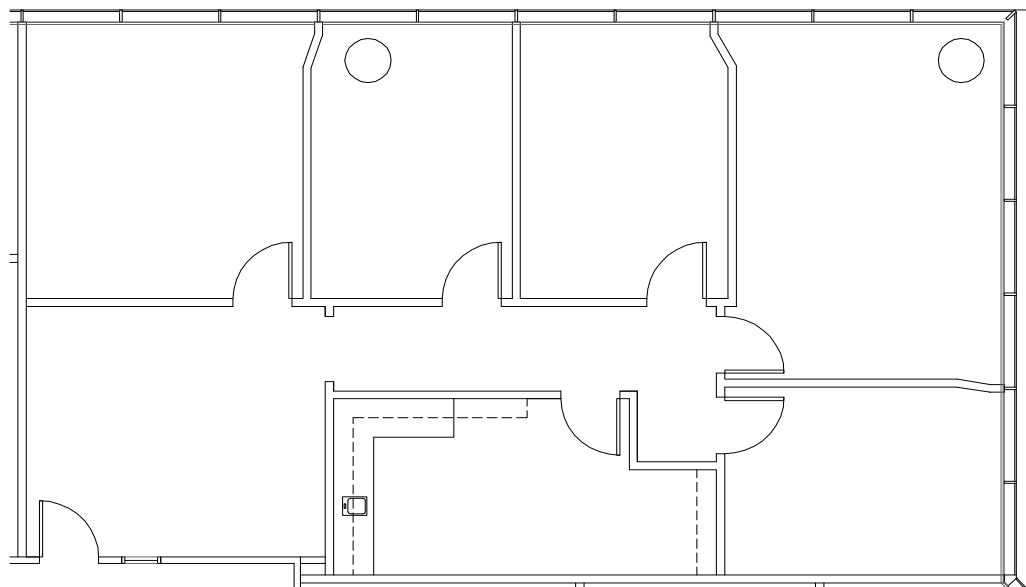
SCALE: 3/32" = 1'-0"



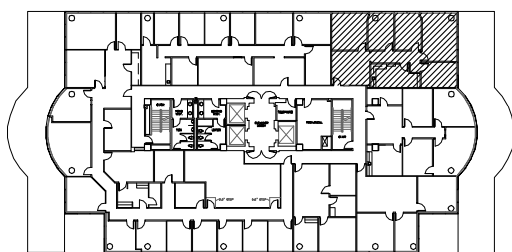
LOCATION PLAN

FLOORPLAN

Available: Suite 611 - 1,754 SF



SCALE: 1/8" = 1'-0"



LEVEL 6 LOCATION PLAN

Contact Information:

Bryan Sethney

Managing Director

+1 210 305 4280

bryan.sethney@cushwake.com

4040 Broadway, Suite 602
San Antonio, TX 78209

cushmanwakefield.com



©2023 Cushman & Wakefield. All rights reserved. The information contained in this communication is strictly confidential. This information has been obtained from sources believed to be reliable but has not been verified. NO WARRANTY OR REPRESENTATION, EXPRESS OR IMPLIED, IS MADE AS TO THE CONDITION OF THE PROPERTY (OR PROPERTIES) REFERENCED HEREIN OR AS TO THE ACCURACY OR COMPLETENESS OF THE INFORMATION CONTAINED HEREIN, AND SAME IS SUBMITTED SUBJECT TO ERRORS, OMISSIONS, CHANGE OF PRICE, RENTAL OR OTHER CONDITIONS, WITHDRAWAL WITHOUT NOTICE, AND TO ANY SPECIAL LISTING CONDITIONS IMPOSED BY THE PROPERTY OWNER(S). ANY PROJECTIONS, OPINIONS OR ESTIMATES ARE SUBJECT TO UNCERTAINTY AND DO NOT SIGNIFY CURRENT OR FUTURE PROPERTY PERFORMANCE.