

# 219

RANDALL  
STREET

---

DOWNTOWN GREER  
OPPORTUNITY ZONE

±2,415 SF Office Space Available



CUSHMAN &  
WAKEFIELD

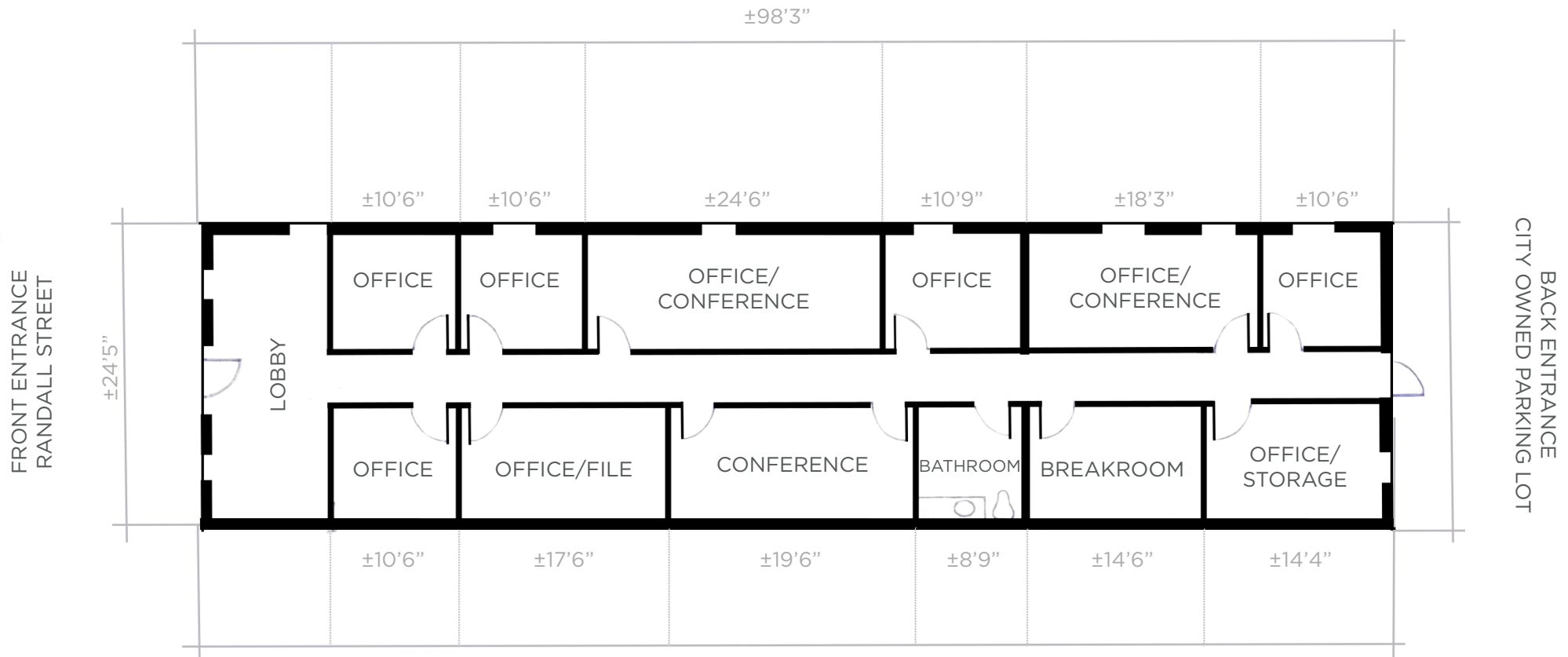
# PROPERTY INFO

SPACE AVAILABLE:	±2,415 SF
FRONTAGE:	25' 6"
POSSESSION:	IMMEDIATE
PARKING:	2.48/1,000 SF
LEASE TYPE:	DIRECT
ASKING RENT:	\$24.00/SF NN

- Walkability Score: Very Walkable (73)
- Small Renovations In Progress
- In Opportunity Zone of Downtown Greer
- Free city parking lot directly behind building
- Free parking along Randall Street
- Neighbors include financial group, contractors and event space
- Several restaurant concepts within walking distance

CITY OF  
GREER INFO

[Click Here](#)

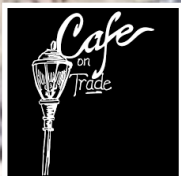








# LOCATION



## GREER STATION

Greer's Central Business District which includes 12 square blocks of retail, dining, entertainment and professional services.

## GREER CITY PARK

Greer Farmers  
Sunday Greer  
Farmers Market

S MAIN STREET

VICTORIA STREET

E POINSETT STREET

RANDALL STREET

219  
RANDALL  
STREET





# 219

RANDALL  
STREET

## CONTACT

BRIAN YOUNG, CCIM, SIOR  
Senior Director  
+1 864-370-8087  
[brian.j.young@cushwake.com](mailto:brian.j.young@cushwake.com)

©2024 Cushman & Wakefield. All rights reserved. The information contained in this communication is strictly confidential. This information has been obtained from sources believed to be reliable but has not been verified. NO WARRANTY OR REPRESENTATION, EXPRESS OR IMPLIED, IS MADE AS TO THE CONDITION OF THE PROPERTY (OR PROPERTIES) REFERENCED HEREIN OR AS TO THE ACCURACY OR COMPLETENESS OF THE INFORMATION CONTAINED HEREIN, AND SAME IS SUBMITTED SUBJECT TO ERRORS, OMISSIONS, CHANGE OF PRICE, RENTAL OR OTHER CONDITIONS, WITHDRAWAL WITHOUT NOTICE, AND TO ANY SPECIAL LISTING CONDITIONS IMPOSED BY THE PROPERTY OWNER(S). ANY PROJECTIONS, OPINIONS OR ESTIMATES ARE SUBJECT TO UNCERTAINTY AND DO NOT SIGNIFY CURRENT OR FUTURE PROPERTY PERFORMANCE.

