

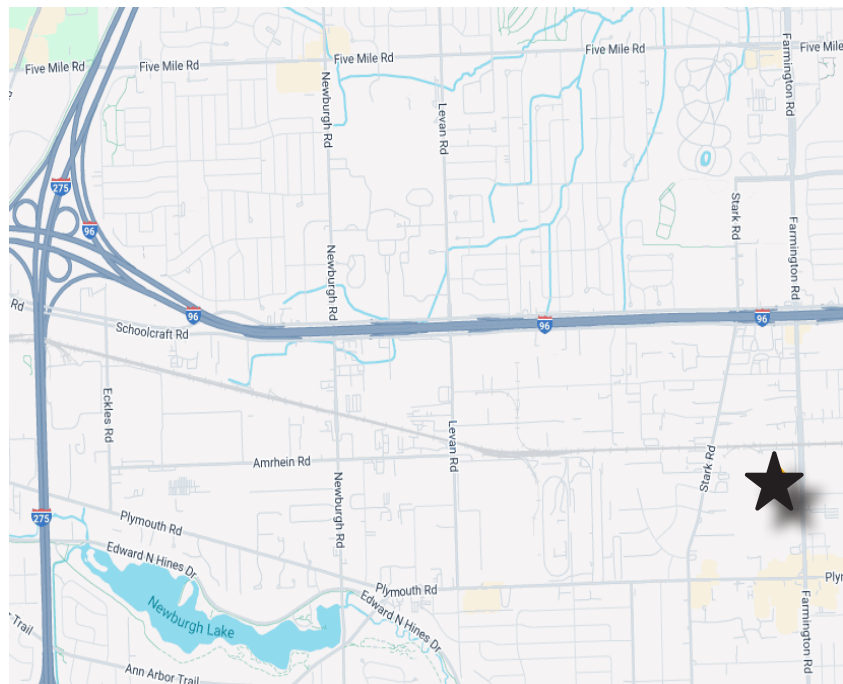
FOR LEASE

**12001 Farmington Road
Livonia, MI 48150**



SPACE HIGHLIGHTS

- 283,110 SF manufacturing facility
- Expanded in 2018 & 2020 to include (2) 580' crane bays:
 - 50' wide, 44' clear, 50/20-ton crane 36' underhook
 - 40' wide, 30' clear, 30-ton crane 24' underhook
- 8,700 SF of updated office area
- 19 truck dock and 7 Grade level doors
- Two primary electrical services (size to be verified)
- 14.27 acre with 191 auto stalls & 1.7-acre concrete rear yard
- Zoned M-2 General Manufacturing
- Located on Farmington Rd, ½ mile south of I-96



TONY AVENDT
EXECUTIVE DIRECTOR
+1 248 358 6115
tony.avendt@cushwake.com

CONNER SALSBERY
DIRECTOR
+1 248 358 6114
conner.salsberry@cushwake.com

FOR LEASE

**12001 Farmington Road
Livonia, MI 48150**



PROPERTY INFORMATION

Address	12001 Farmington Road Livonia, MI 48150
Total Building Area	283,110 SF
Office Area	8,700 SF
Industrial Area	274,410 SF
Primary Use	Manufacturing
Property Class	B
Year Built/Renovated	1960, renovated in 2018 & 2020
Roof	To be determined
Total Acreage	14.27
Auto Parking	191 spaces
Loading	19 docks (size varies), 7 grade level doors
Zoning	M2 General Manufacturing
Construction	Precast & ISP
Outside Storage / Trailer Staging	Yes; +/- 1.7 acre yard
Ceiling Height	20' to 44'
Industrial Area HVAC	Radiant heat
Industrial Area Lighting	Flourescent
Power	2 primary services, size to be verified
Fire Suppression	Ordinary hazard
Cranes	Yes; 50/20 ton and 30 ton
Asking Rate	\$7.45/SF NNN
Operating Expenses	To be determined

TONY AVENDT
EXECUTIVE DIRECTOR
+1 248 358 6115
tony.avendt@cushwake.com

CONNER SALSBERY
DIRECTOR
+1 248 358 6114
conner.salsberry@cushwake.com

[illegible]

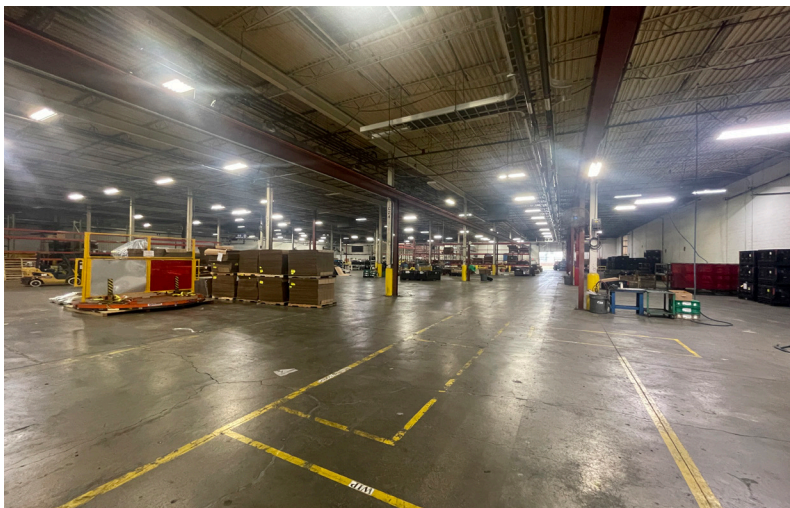
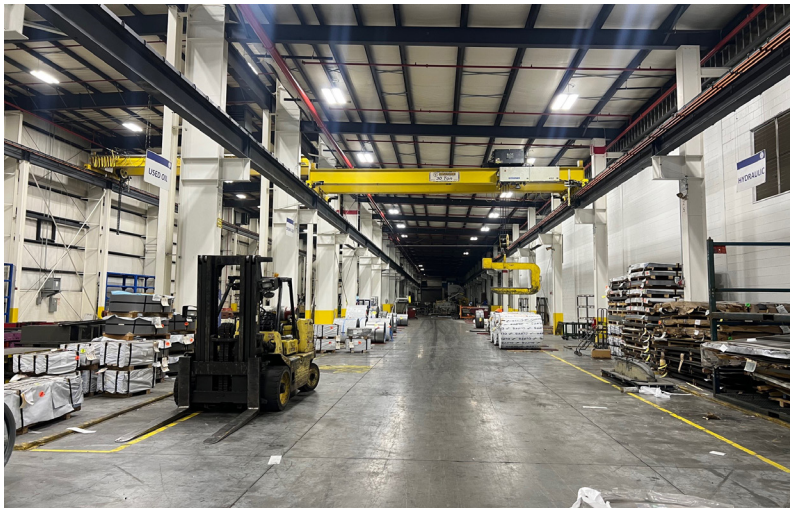
CONNER SALSBERY
DIRECTOR
+1 248 358 6114
conner.salsberry@cushwake.com



FOR LEASE
12001 Farmington Road
Livonia, MI 48150



PHOTOS



TONY AVENDT
EXECUTIVE DIRECTOR
+1 248 358 6115
tony.avendt@cushwake.com

CONNER SALSBERY
DIRECTOR
+1 248 358 6114
conner.salsberry@cushwake.com

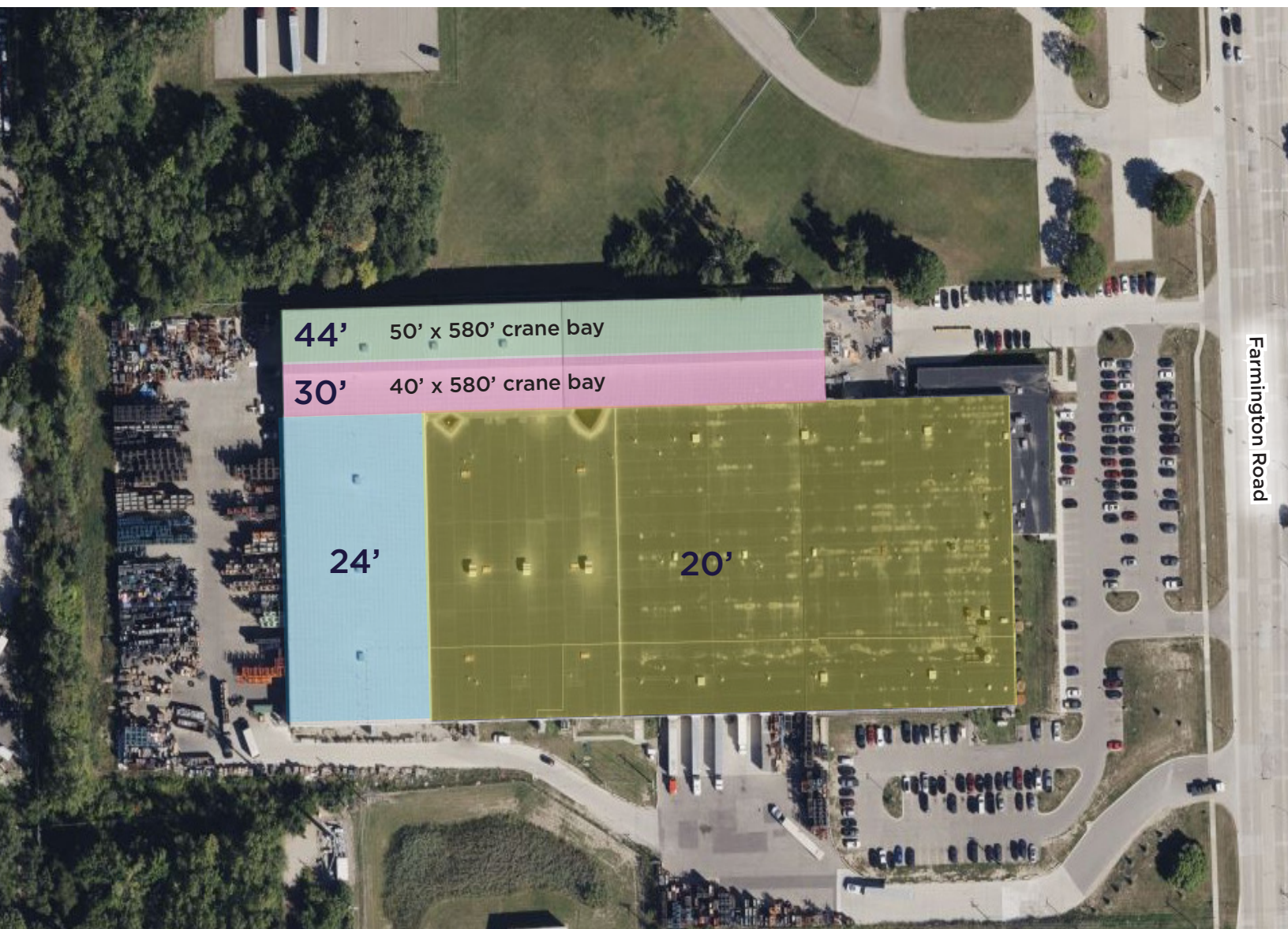
FOR LEASE

**12001 Farmington Road
Livonia, MI 48150**



**CUSHMAN &
WAKEFIELD**

CEILING HEIGHTS



Farmington Road



TONY AVENDT
EXECUTIVE DIRECTOR
+1 248 358 6115
tony.avendt@cushwake.com

CONNER SALSBERY
DIRECTOR
+1 248 358 6114
conner.salsberry@cushwake.com

CUSHMAN & WAKEFIELD COPYRIGHT 2025. NO WARRANTY OR REPRESENTATION, EXPRESS OR IMPLIED, IS MADE TO THE ACCURACY OR COMPLETENESS OF THE INFORMATION CONTAINED HEREIN, AND SAME IS SUBMITTED SUBJECT TO ERRORS, OMISSIONS, CHANGE OF PRICE, RENTAL OR OTHER CONDITIONS, WITHDRAWAL WITHOUT NOTICE, AND TO ANY SPECIAL LISTING CONDITIONS IMPOSED BY THE PROPERTY OWNER(S). AS APPLICABLE, WE MAKE NO REPRESENTATION AS TO THE CONDITION OF THE PROPERTY (OR PROPERTIES) IN QUESTION.