

HOWELL COMMONS

**NORTHEAST CORNER OF
GRAND RIVER AVE & M-59**

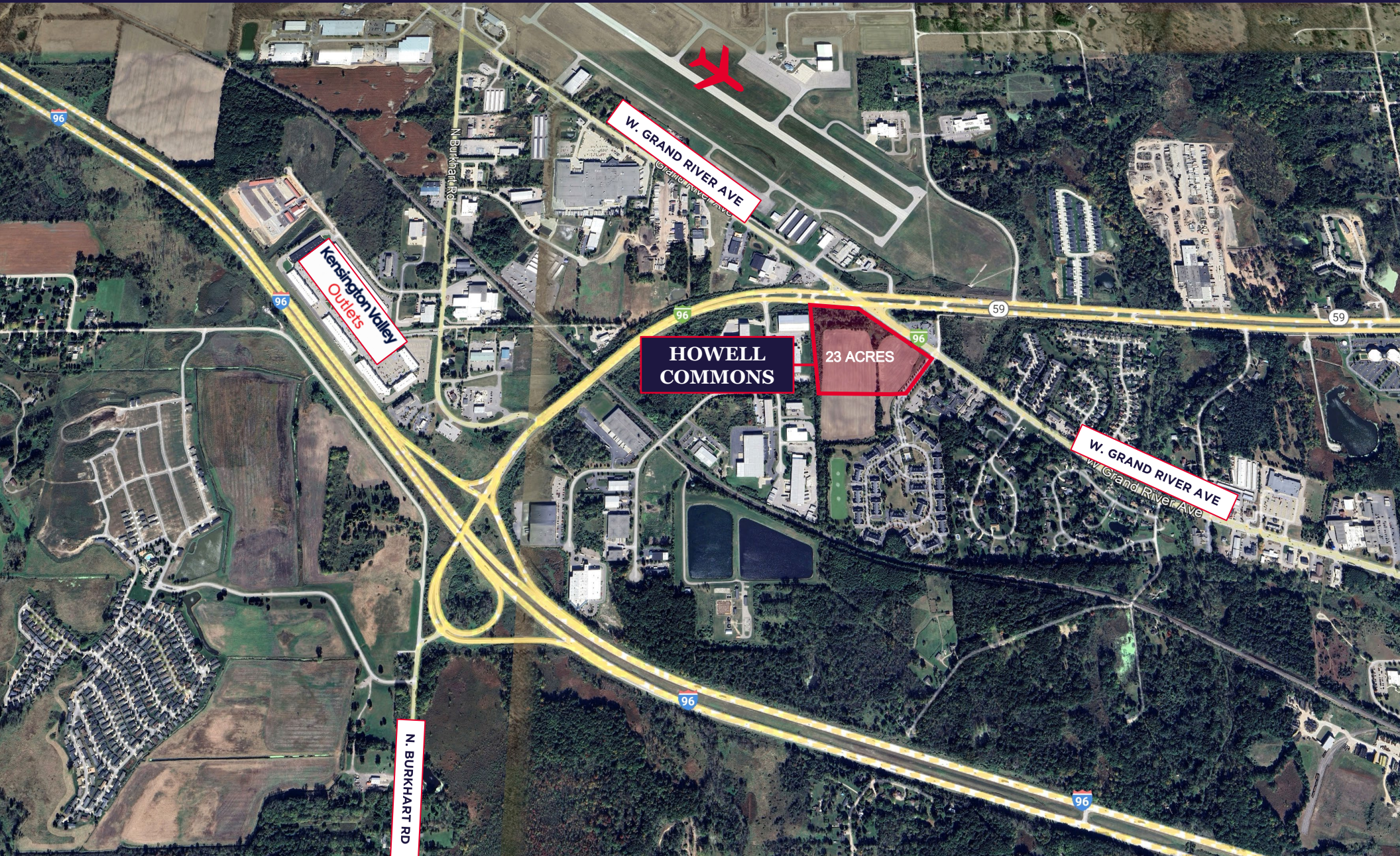
**23 ACRES
BUILD-TO-SUIT LEASE OR
SALE
OUTLOT SALES
AVAILABLE**

CONTACT

Kyle Passage
Senior Associate
+1 248 358 6113
kyle.passage@cushwake.com

Steve Kozak
Director
+1 248 358 6107
steve.kozak@cushwake.com





RENDERING

HOWELL COMMONS



AVAILABILITY

HOWELL COMMONS

Acres:	23	Neighbors:	Howell Municipal Airport, Kensington Valley Outlets, Trans West Industrial Ctr, Tomato Brothers
Zoning:	Regional Service Commercial	Frontage:	~1,400 SF
APN:	06-28-400-012 & 06-28-401-023	Asking Rent:	Contact Broker
Use:	Prime retail, medical services, and mixed-use site		

COMMENTS

- High growth area
- Less than a mile to I-96
- 27,000 traffic count intersection at Highland Rd (M-59) and Grand River Ave

