

**SMITH**  
DEVELOPMENT

# 300

## HOPE STREET

MOUNTAIN VIEW | CALIFORNIA

COMING SOON | 22,357 SF CLASS A+ OFFICE DEVELOPMENT

 CUSHMAN &  
WAKEFIELD

 Colliers



300  
HOPE STREET



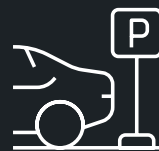
## PROJECT FEATURES



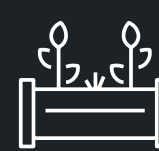
Three-Story Class A+  
Office Development  
(2028 Delivery)



Entry Level: 1,453 RSF Retail  
Second Level: 10,821 RSF Office  
Third Level: 10,083 RSF Office



Exclusive underground  
parking garage with  
13 dedicated spaces



Well-appointed work areas  
4,162 SF Rooftop Lounge with  
Kitchen and ground level plaza



Core Downtown Mountain View  
location - 1 block from Castro St  
and 2 blocks from Caltrain



# 300

HOPE STREET

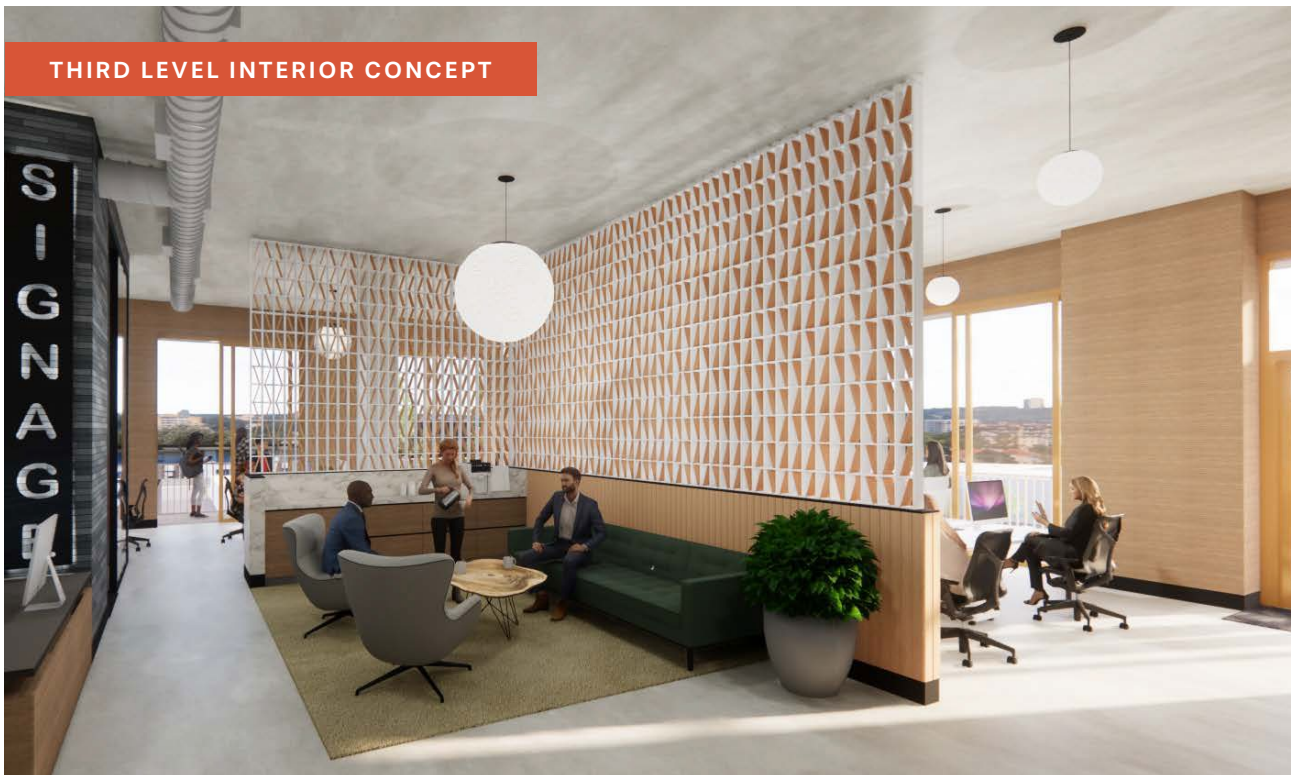
## BUILDING FEATURES

- Best-in-class new construction with terra cotta exterior cladding
- Entry level plaza with retail space
- Prominent corner location with building signage available
- High-image, single tenant corporate identity
- Roof top terrace with kitchen and third level terrace





THIRD LEVEL INTERIOR CONCEPT



GROUND LEVEL OUTDOOR AREA



ROOF TOP KITCHEN AREA

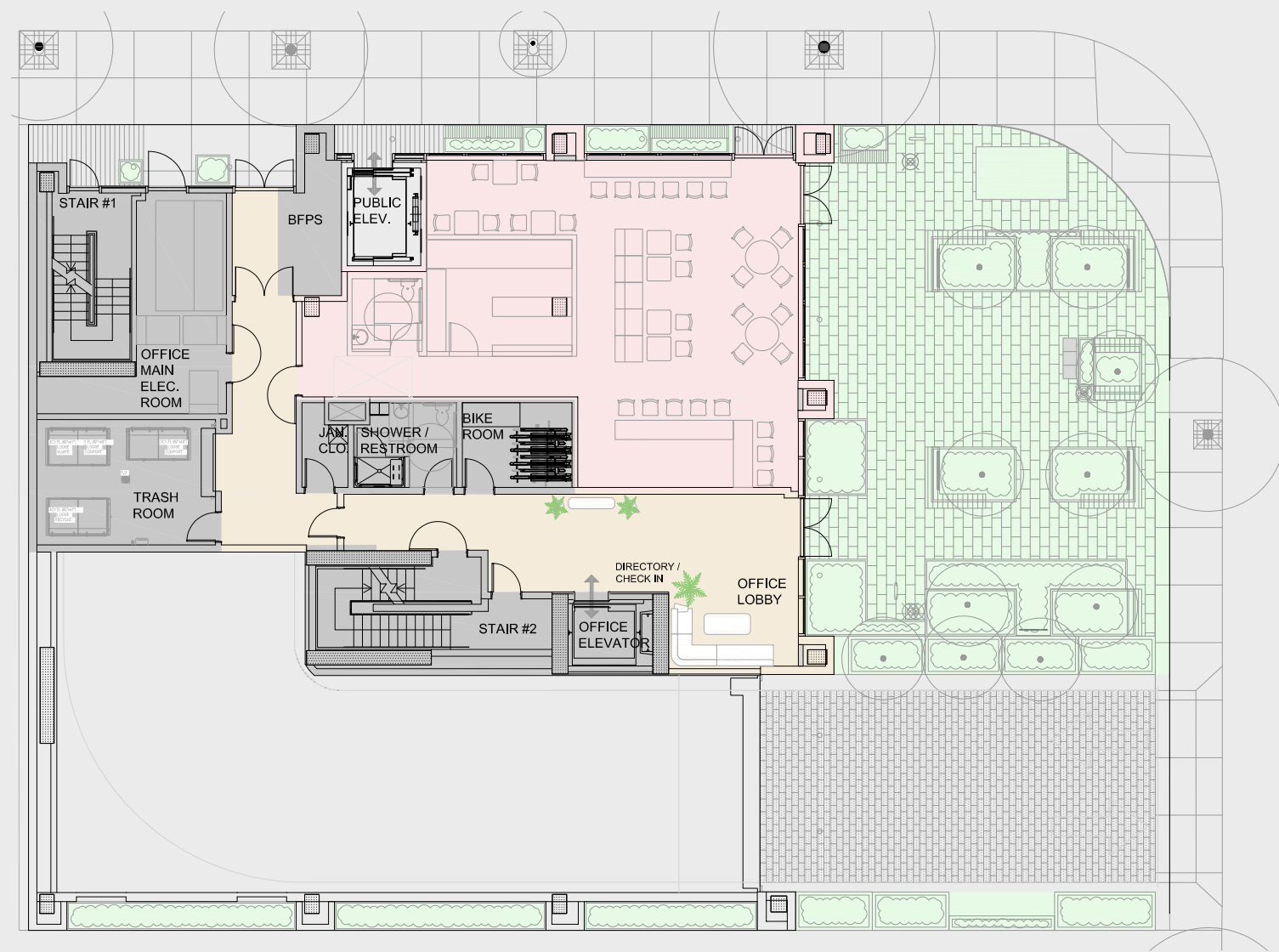


ROOF TOP KITCHEN AREA





ENTRY LEVEL / PLAZA - 1,453 SF RETAIL SPACE



## SECOND LEVEL - 10,821 RSF OFFICE

PROFESSIONAL SERVICES CONCEPTUAL LAYOUT

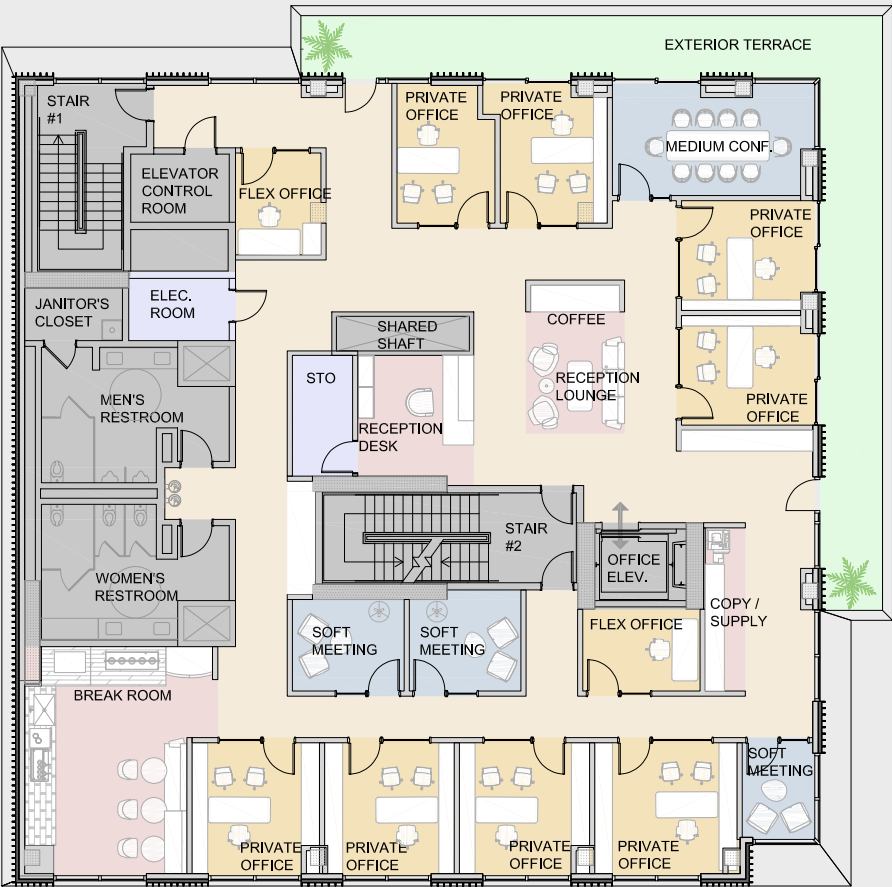


OPEN / TECH CONCEPTUAL LAYOUT



THIRD LEVEL - 10,083 RSF OFFICE

PROFESSIONAL SERVICES CONCEPTUAL LAYOUT



OPEN / TECH CONCEPTUAL LAYOUT



## ROOF TOP TERRACE







300  
HOPE STREET

MOUNTAIN VIEW CITY HALL

MOUNTAIN VIEW PUBLIC LIBRARY

MOUNTAIN VIEW POLICE DEPT

UNITED STATES POST OFFICE



MOUNTAIN VIEW  
TRANSIT STATION



MOUNTAIN VIEW  
STATION



## RESTAURANTS & CAFES

- |                            |                                   |                          |
|----------------------------|-----------------------------------|--------------------------|
| 1. Happy Lamb Hot Pot      | 15. Cafe 86                       | 29. Cafe Baklava         |
| 2. Vasso Azzurro           | 16. Seasons Noodles & Dumplings   | 30. Sakoon               |
| 3. Johnny & Sanny's        | 17. Super Hot Pot Korean BBQ      | 31. Ava's Market & Deli  |
| 4. Vida! Tapas & Cocteles  | 18. Red Rock Coffee               | 32. Ludwigs Biergarten   |
| 5. Oren's Hummus           | 19. Maison Alyzée                 | 33. Limón                |
| 6. Blue Line Pizza         | 20. Chez TJ                       | 34. Cascal               |
| 7. Doppio Zero Pizzeria    | 21. Steins Beer Garden Restaurant | 35. Scratch              |
| 8. La Fontaine             | 22. Sushi Arashi                  | 36. Tandori Junction     |
| 9. Agave Mexican Bistro    | 23. Gelato Classico               | 37. Sushi Tomi           |
| 10. Olympus Caffè & Bakery | 24. Mantra India                  | 38. Casa Lupe            |
| 11. Amarin Thai Cuisine    | 25. Nick the Greek                | 39. Kirin Restaurant     |
| 12. Fu Lam Mum             | 26. Taqueria La Espuela           | 40. Dana St Roasting Co. |
| 13. Eureka!                | 27. Crepevine                     |                          |
| 14. Hummus Kitchen         | 28. Paris Baguette                |                          |



## BANKS

- |                    |
|--------------------|
| 1. Citibank        |
| 2. Bank of America |
| 3. BMO             |
| 4. Wells Fargo     |



# 300

## HOPE STREET

MOUNTAIN VIEW | CALIFORNIA



**DAVID HIEBERT**

Vice Chairman

+1 650 320 0250

david.hiebert@cushwake.com

Lic #01189320

## Colliers

**BRETT TAYLOR**

Executive Vice President

+1 408 282 3889

brett.taylor@colliers.com

Lic #01856608

## SMITH DEVELOPMENT

525 University Avenue, Suite 220, Palo Alto, CA 94301 | +1 650 852 1200 | [cushmanwakefield.com](http://cushmanwakefield.com)

©2025 Cushman & Wakefield. No warranty or representation, expressed or implied, is made to the accuracy or completeness of the information contained herein, and same is submitted subject to errors, omissions, change of price, rental or other conditions, withdrawal without notice, and to any special listing conditions imposed by the property owner(s).

As applicable, we make no representation as to the condition of the property (or properties) in question.