

FOR LEASE | 138,733 SF

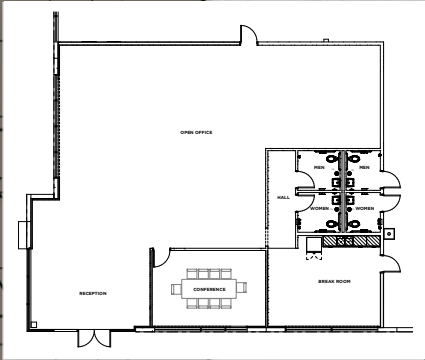
1215 RANKIN RD. HOUSTON, TX 77073



**FAIRWAY NORTH
LOGISTICS PARK**



FAIRWAY NORTH
LOGISTICS PARK



AVAILABLE

**BUILDING 03
CROSS DOCK
±/-235,145 SF
36' CLR
208 CAR PARKING**

BRUEGMANN
LEASED

24 TRAILER PARKING

BUILDING 3

1215 RANKIN RD

- 138,733 SF Move In space available now
- 56' x 43' Column spacing with 60' speed bays
- 3,180 SF of move in ready office
- 8 dock levelers
- 36' Clear Height
- 120 car parks available
- 24 Trailer Parks available
- 30 dock high doors with 2 12'x14' ramped doors
- Direct access off of Rankin Rd
- Low Mud Rate of .27







JIM FOREMAN

JIM.FOREMAN@CUSHWAKE.COM
+1 713 963 2824

ALLISON BERGMANN

ALLISON.BERGMANN@CUSHWAKE.COM
+1 713 963 2865

CUSHMAN & WAKEFIELD
1330 POST OAK BLVD., STE 2700
HOUSTON, TX 77056
713 877 1700



©2025 Cushman & Wakefield. All rights reserved. The information contained in this communication is strictly confidential. This information has been obtained from sources believed to be reliable but has not been verified. NO WARRANTY OR REPRESENTATION, EXPRESS OR IMPLIED, IS MADE AS TO THE CONDITION OF THE PROPERTY (OR PROPERTIES) REFERENCED HEREIN OR AS TO THE ACCURACY OR COMPLETENESS OF THE INFORMATION CONTAINED HEREIN, AND SAME IS SUBMITTED SUBJECT TO ERRORS, OMISSIONS, CHANGE OF PRICE, RENTAL OR OTHER CONDITIONS, WITHDRAWAL WITHOUT NOTICE, AND TO ANY SPECIAL LISTING CONDITIONS IMPOSED BY THE PROPERTY OWNER(S). ANY PROJECTIONS, OPINIONS OR ESTIMATES ARE SUBJECT TO UNCERTAINTY AND DO NOT SIGNIFY CURRENT OR FUTURE PROPERTY PERFORMANCE.

