

FOR SUBLEASE
5,674 SF AVAILABLE



SUITE 215

2517 FAIRWAY PARK DRIVE

HOUSTON, TX 77092



**CUSHMAN &
WAKEFIELD**

PROPERTY HIGHLIGHTS

Space Available: 5,674 SF

Office Space: 1,250 SF

Clear Height: 14'

Ramp: 1 (one)

Dock Well: 1 (one) dock well with leveler

Truck Court: Shared truck court

Amenities:

- Direct access from Hempstead Highway
- Close proximity to US 290 and 610 Loop

Term: June 30, 2026

Asking Price: \$0.91/SF/Month NNN

OPEX \$0.305/SF/Month

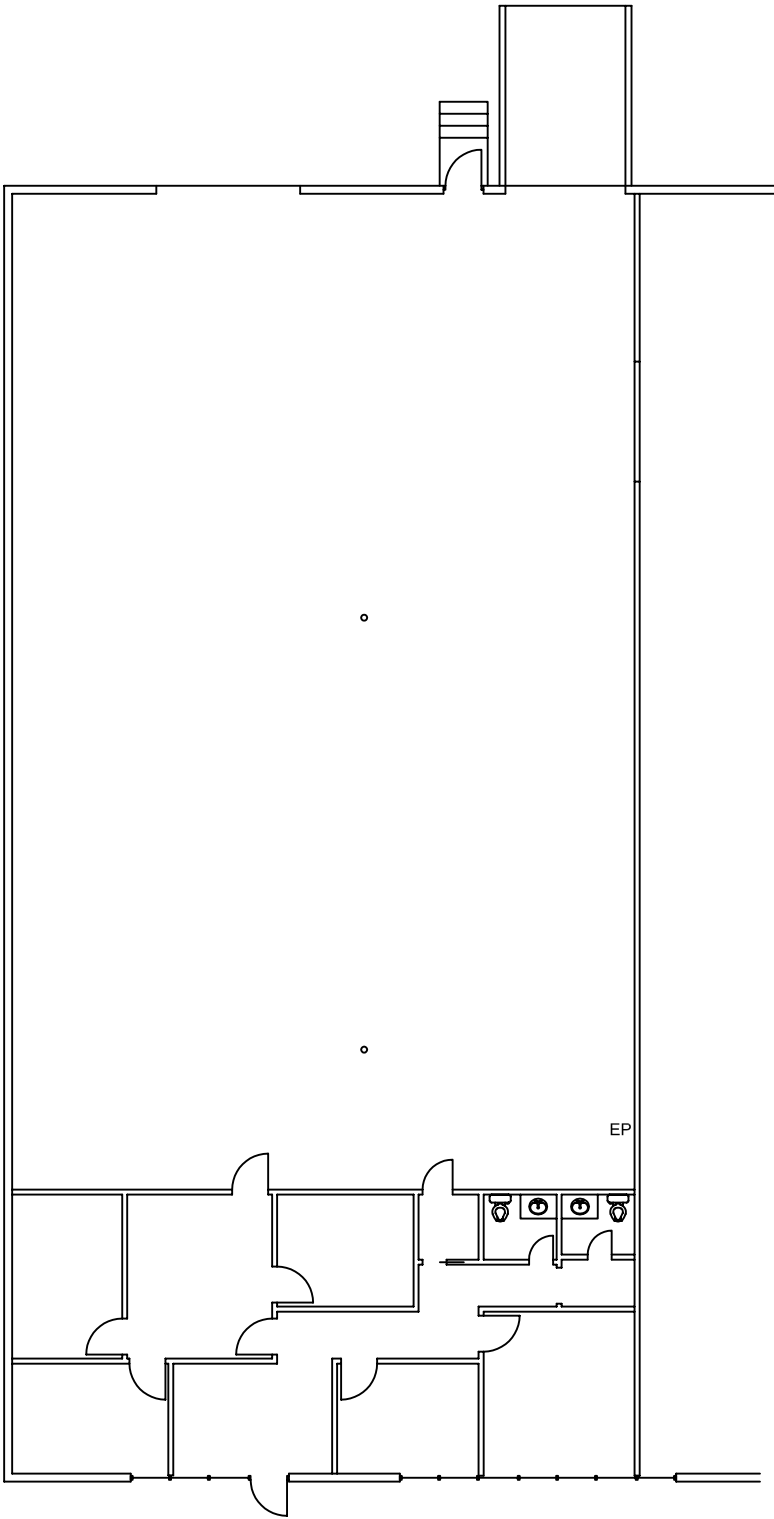
INTERIOR PHOTOS



WAREHOUSE



DOCK WELL



FLOOR PLAN
5,674 SF



CONTACT INFORMATION

COE PARKER, SIOR

Senior Director

+1 713 963 2825

coe.parker@cushwake.com

B. KELLEY PARKER, SIOR

Vice Chair

+1 713 963 2896

kelley.parker@cushwake.com

JOHN F. LITTMAN, SIOR

Executive Managing Director

+1 713 963 2862

john.littman@cushwake.com



©2025 Cushman & Wakefield. All rights reserved. The information contained in this communication is strictly confidential. This information has been obtained from sources believed to be reliable but has not been verified. NO WARRANTY OR REPRESENTATION, EXPRESS OR IMPLIED, IS MADE AS TO THE CONDITION OF THE PROPERTY (OR PROPERTIES) REFERENCED HEREIN OR AS TO THE ACCURACY OR COMPLETENESS OF THE INFORMATION CONTAINED HEREIN, AND SAME IS SUBMITTED SUBJECT TO ERRORS, OMISSIONS, CHANGE OF PRICE, RENTAL OR OTHER CONDITIONS, WITHDRAWAL WITHOUT NOTICE, AND TO ANY SPECIAL LISTING CONDITIONS IMPOSED BY THE PROPERTY OWNER(S). ANY PROJECTIONS, OPINIONS OR ESTIMATES ARE SUBJECT TO UNCERTAINTY AND DO NOT SIGNIFY CURRENT OR FUTURE PROPERTY PERFORMANCE.

cushmanwakefield.com