

FOR SALE  
5,000 SF



655 LIVELY BLVD  
ELK GROVE VILLAGE, ILLINOIS

---

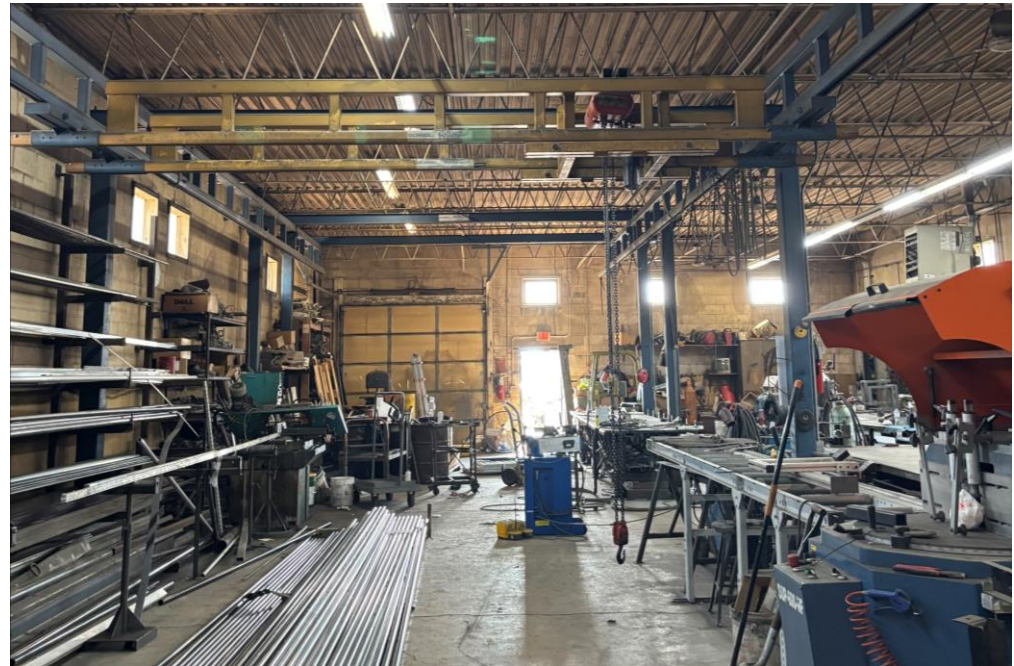
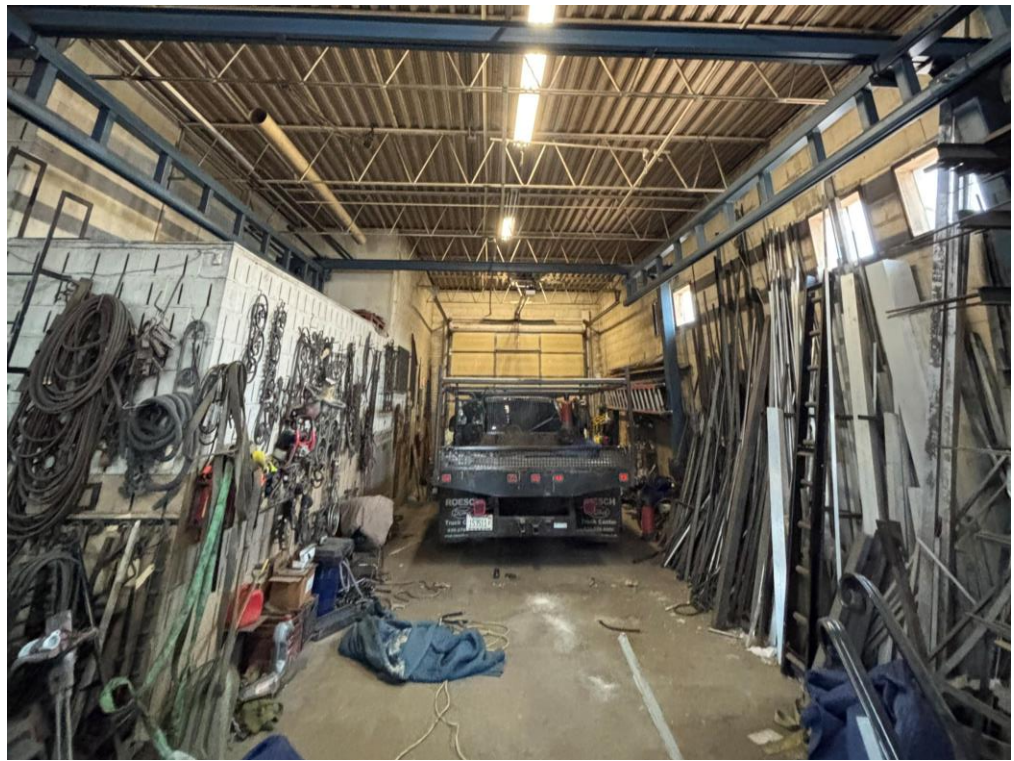
# PROPERTY HIGHLIGHTS

655 Lively Blvd is a free-standing facility suitable for manufacturing or warehouse use. Situated in the O'Hare submarket with convenient access to I-90 and O'Hare airport.

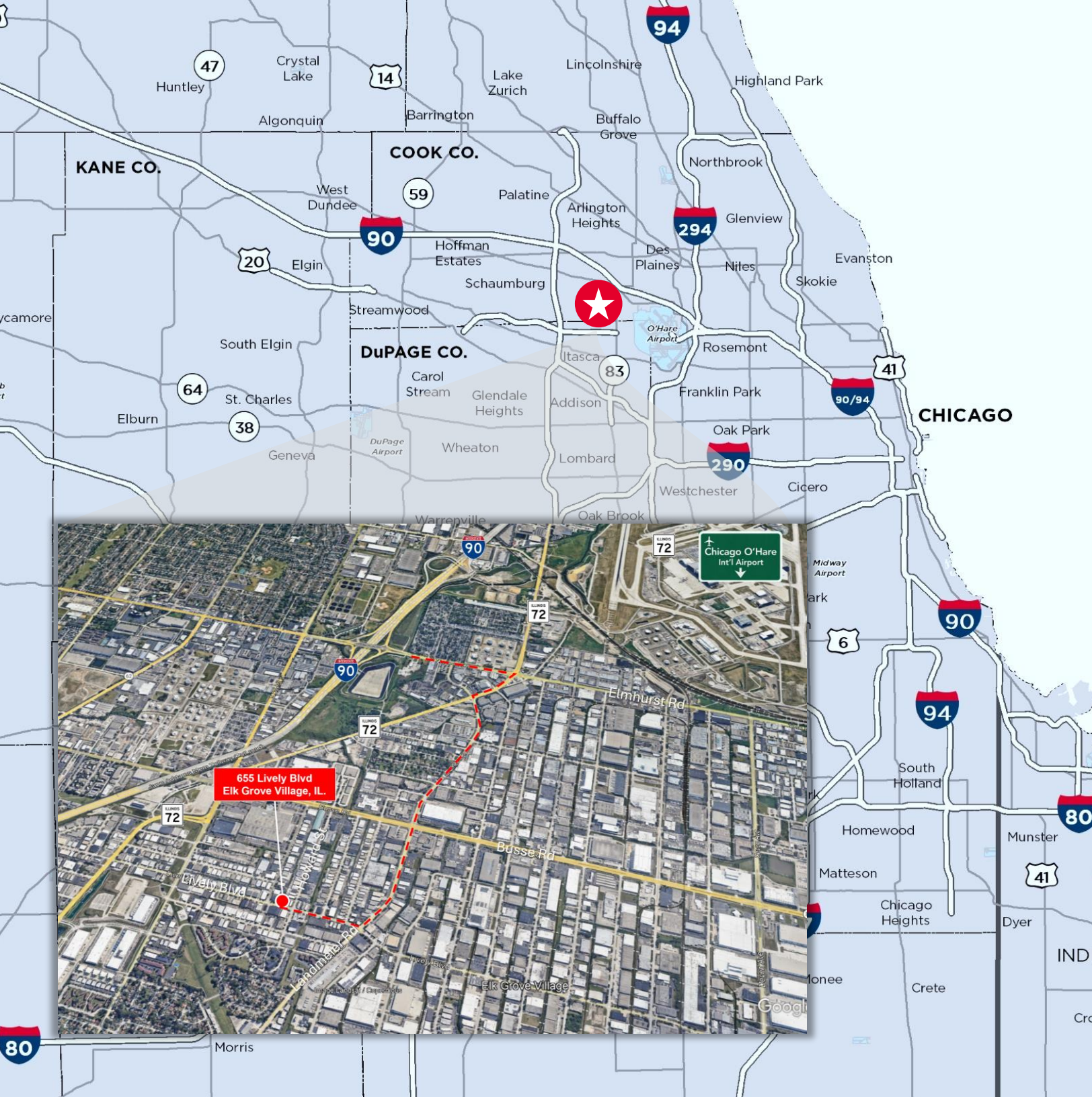
Building Size:	5,000 SF
Year Built:	1970
Office Area:	+/- 750 SF
Site Area:	+/- 0.34 Acres
Clear Height:	12'
Loading:	2 Drive-in-Doors (12x12   10x10)
Parking:	7 stalls
Zoning:	I-1 – Generalized Industrial District
Power:	200 Amps   240 Volts
Taxes:	\$24,250 (2023) (\$4.85 p.s.f.)
Sale Price:	<b>\$600,000</b> <b>(\$120 p.s.f.)</b>











---

**2.3 MILES**  
TO I-90 INTERSTATE

---

**9 MILES**  
TO O'HARE AIRPORT

---

**22 MILES**  
TO CHICAGO CBD

---



# CONTACT INFORMATION

## **MICHAEL LABEK**

Senior Associate

Michael.Labek@Cushwake.com  
312 470 2309

## **ELIZABETH SCHOENHEIDER**

Associate

Elizabeth.Schoenheider@Cushwake.com  
847 720 1328

