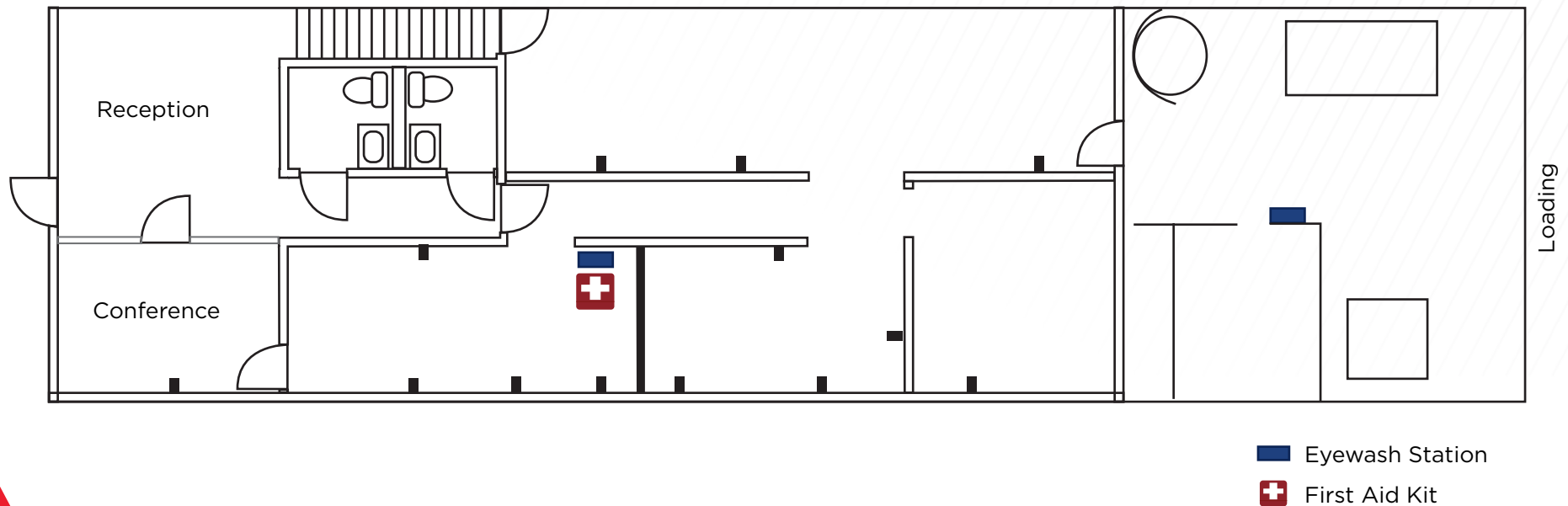


FLOOR PLAN

50A NORTHWESTERN DRIVE
SALEM, NH

Unit 4 | 1st Floor



FOR MORE INFORMATION, PLEASE CONTACT:

Thomas Farrelly, SIOR
Executive Managing Director
thomas.farrelly@cushwake.com
M: +1 603 661 4854

Sue Ann Johnson
Managing Director
sueann.johnson@cushwake.com
M: +1 603 490 6900

Denis C. J. Dancoes II
Executive Director
denis.dancoes@cushwake.com
M: +1 603 661 3854

cushmanwakefield.com
900 Elm Street, Suite 1301
Manchester, New Hampshire 03101
+1 603 628 2800

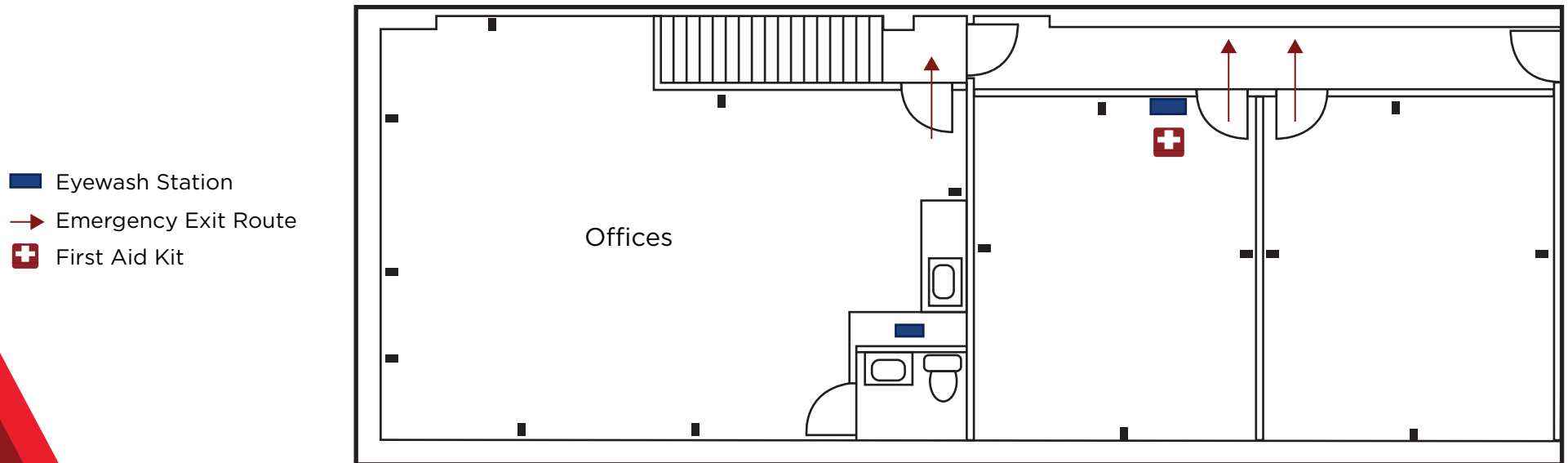
©2025 Cushman & Wakefield. All rights reserved. The information contained in this communication is strictly confidential. This information has been obtained from sources believed to be reliable but has not been verified. NO WARRANTY OR REPRESENTATION, EXPRESS OR IMPLIED, IS MADE AS TO THE CONDITION OF THE PROPERTY (OR PROPERTIES) REFERENCED HEREIN OR AS TO THE ACCURACY OR COMPLETENESS OF THE INFORMATION CONTAINED HEREIN, AND SAME IS SUBMITTED SUBJECT TO ERRORS, OMISSIONS, CHANGE OF PRICE, RENTAL OR OTHER CONDITIONS, WITHDRAWAL WITHOUT NOTICE, AND TO ANY SPECIAL LISTING CONDITIONS IMPOSED BY THE PROPERTY OWNER(S). ANY PROJECTIONS, OPINIONS OR ESTIMATES ARE SUBJECT TO UNCERTAINTY AND DO NOT SIGNIFY CURRENT OR FUTURE PROPERTY PERFORMANCE.



FLOOR PLAN

50A NORTHWESTERN DRIVE
SALEM, NH

Unit 4 | 2nd Floor



FOR MORE INFORMATION, PLEASE CONTACT:

Thomas Farrelly, SIOR
Executive Managing Director
thomas.farrelly@cushwake.com
M: +1 603 661 4854

Sue Ann Johnson
Managing Director
sueann.johnson@cushwake.com
M: +1 603 490 6900

Denis C. J. Dancoes II
Executive Director
denis.dancoes@cushwake.com
M: +1 603 661 3854

cushmanwakefield.com
900 Elm Street, Suite 1301
Manchester, New Hampshire 03101
+1 603 628 2800

©2025 Cushman & Wakefield. All rights reserved. The information contained in this communication is strictly confidential. This information has been obtained from sources believed to be reliable but has not been verified. NO WARRANTY OR REPRESENTATION, EXPRESS OR IMPLIED, IS MADE AS TO THE CONDITION OF THE PROPERTY (OR PROPERTIES) REFERENCED HEREIN OR AS TO THE ACCURACY OR COMPLETENESS OF THE INFORMATION CONTAINED HEREIN, AND SAME IS SUBMITTED SUBJECT TO ERRORS, OMISSIONS, CHANGE OF PRICE, RENTAL OR OTHER CONDITIONS, WITHDRAWAL WITHOUT NOTICE, AND TO ANY SPECIAL LISTING CONDITIONS IMPOSED BY THE PROPERTY OWNER(S). ANY PROJECTIONS, OPINIONS OR ESTIMATES ARE SUBJECT TO UNCERTAINTY AND DO NOT SIGNIFY CURRENT OR FUTURE PROPERTY PERFORMANCE.

