

1950 GRACE AVE

Fort Myers, FL 33901



CUSHMAN &
WAKEFIELD

COMMERCIAL
PROPERTY
SOUTHWEST FLORIDA



±0.50 acres

FOR SALE

\$250,000

Property Highlights

- Located just off signalized intersection of US-41
- Close to public transportation bus stops
- Water credits available
- Tax incentives available
- Approvals in place for a 30-unit senior living, with several alternate uses available including office

STRAP
NUMBER(S)

26-44-24-P3-01304.0040

PROPERTY
TYPE

Commercial Land

LAND AREA

± 21,780 SF / 0.50 AC

ZONING

CI – Commercial Intensive

FUTURE LAND
USE

C/C – Corridor Commercial

FRONTAGE

±98' on Grace Ave
±49' on Passaic Ave

SUBMARKET

City of Fort Myers

GARY TASMAN
CEO / Principal Broker
(239) 489-3600
gtasman@cpswfl.com

LANE BOY
Executive Director
(239) 489-3600
lboy@cpswfl.com

Better never settles

1950 GRACE AVE Fort Myers, FL 33901

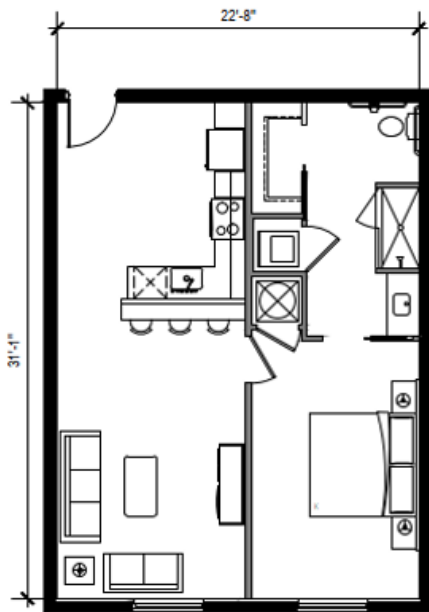


CUSHMAN &
WAKEFIELD

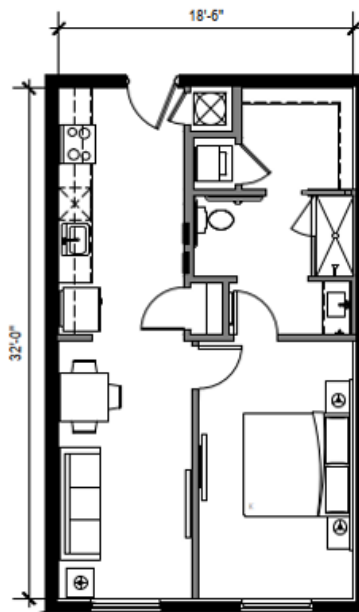
COMMERCIAL
PROPERTY
SOUTHWEST FLORIDA

CONCEPTUAL PLANS

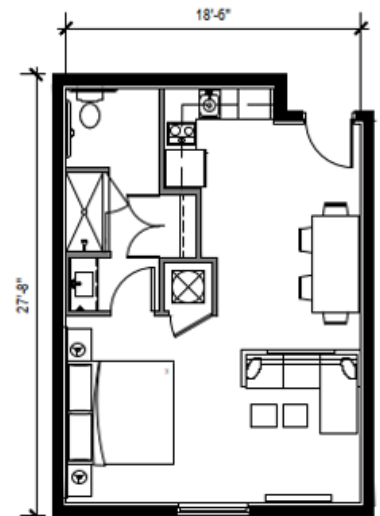
UNIT STATISTICS									PROJECT TOTAL		
UNIT CALCULATIONS	PATIO AREA	A/C AREA	GROSS AREA	FIRST LEVEL	SECOND LEVEL	THIRD LEVEL	FOURTH LEVEL	FIFTH LEVEL	UNIT TOTAL	% of DEVELOPMENT	TOTAL UNIT AREA
UNIT "A1" 1 BED / 1 BATH	0	705	783	0	4	4	4	4	16	53.33%	12,528
UNIT "S1" STUDIO	0	592	651	0	0	2	2	2	6	46.67%	3,906
UNIT "S2" STUDIO	0	469	523	0	2	2	2	2	8		4,184
UNIT TOTAL PER FLOOR				0	6	8	8	8	30		20,618
AMENITY AREA				0	1,307	0	0	0		PERCENTAGE OF RENTABLE AREA	63.2%
TOTAL BLDG AREA				6,525	6,525	6,525	6,525	6,525		TOTAL BUILDING AREA	32,625



UNIT "A1" FLOOR PLAN



UNIT "S1" FLOOR PLAN



UNIT "S2" FLOOR PLAN



CONCEPT

23,625 sf 5-story multi-family building
 1st floor 6,525 SF no dwelling units
 2nd floor 6,525 SF 6 dwelling units
 3rd floor 6,525 SF 8 dwelling units
 4th floor 6,525 SF 8 dwelling units
 5th floor 6,525 SF 8 dwelling units

1950 GRACE AVE
Fort Myers, FL 33901



**CUSHMAN &
WAKEFIELD**

**COMMERCIAL
PROPERTY
SOUTHWEST FLORIDA**

LOCATION & DEMOGRAPHICS



2024 Demographics	1-Mile	3-Miles	5-Miles
Total Population	12,289	58,937	172,745
Total Households	4,874	25,040	72,702
Annual Population Growth 2024-2029	3.2%	3.7%	3.7%
Median Age	38.2	39.2	42.8

Better never settles

GARY TASMAN
CEO / Principal Broker
(239) 489-3600
gtasman@cpswfl.com

LANE BOY
Executive Director
(239) 489-3600
lboy@cpswfl.com