

28 Sycamore Avenue

Medford, MA



26,000 SF

Available

Property Overview

Cushman & Wakefield, as exclusive agent, is pleased to present the opportunity to lease 28 Sycamore Avenue (the “Property”), an approximately 41,000 square foot industrial building located in Medford, Massachusetts. Situated on 2.69 acres, the Property currently can subdivide to 26,000 SF and accommodate one tenant.

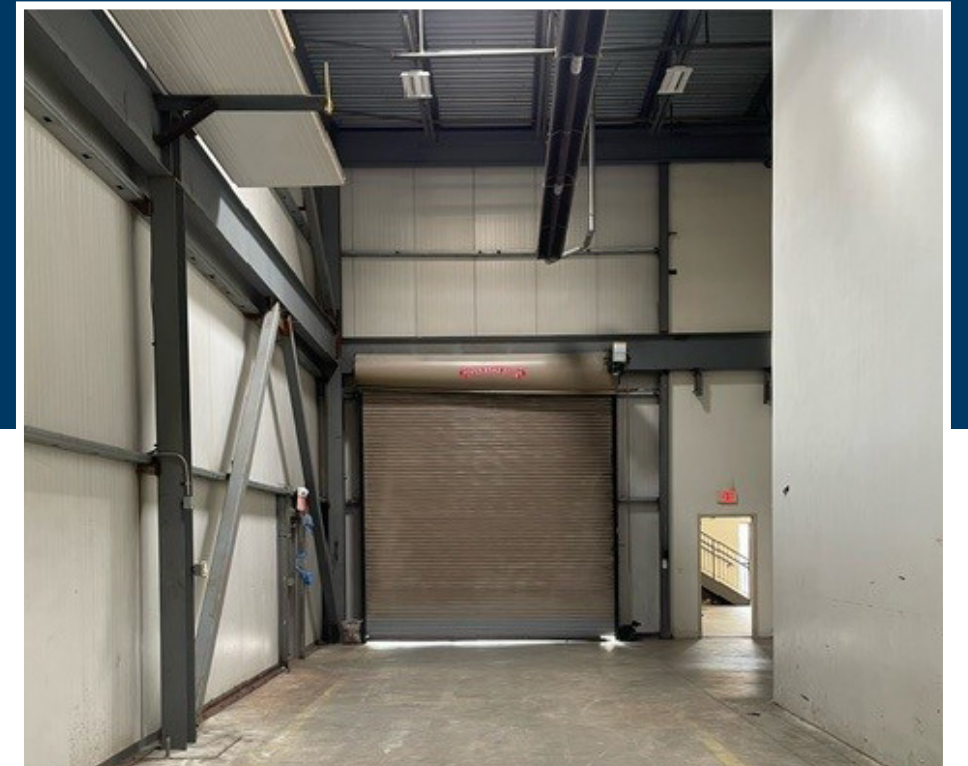
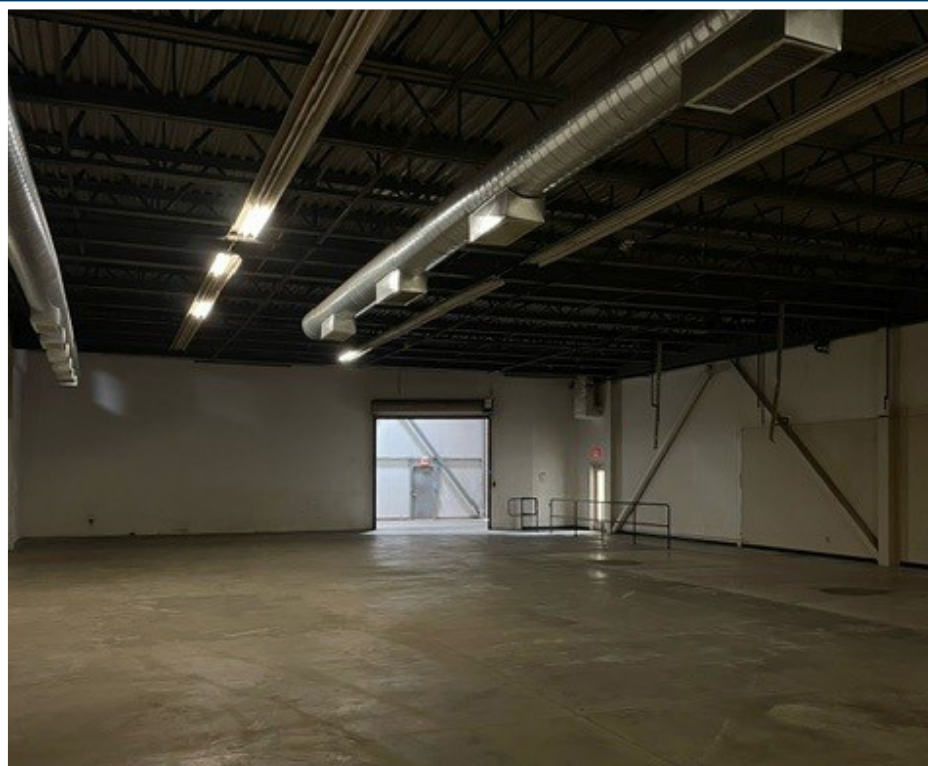
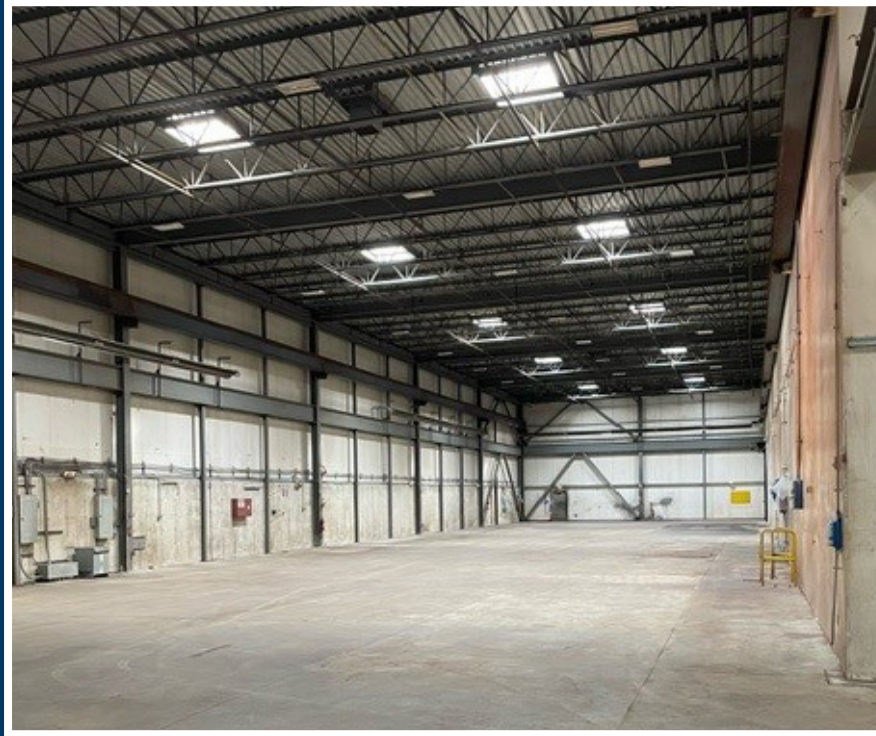
28 Sycamore Avenue is located less than five miles from Downtown Boston, four miles from Kendall Square and steps from Somerville’s rapidly transforming neighborhood. The property sits directly off of Routes 16 and 28 allowing for immediate access to Interstate 93, providing accessibility in all directions.



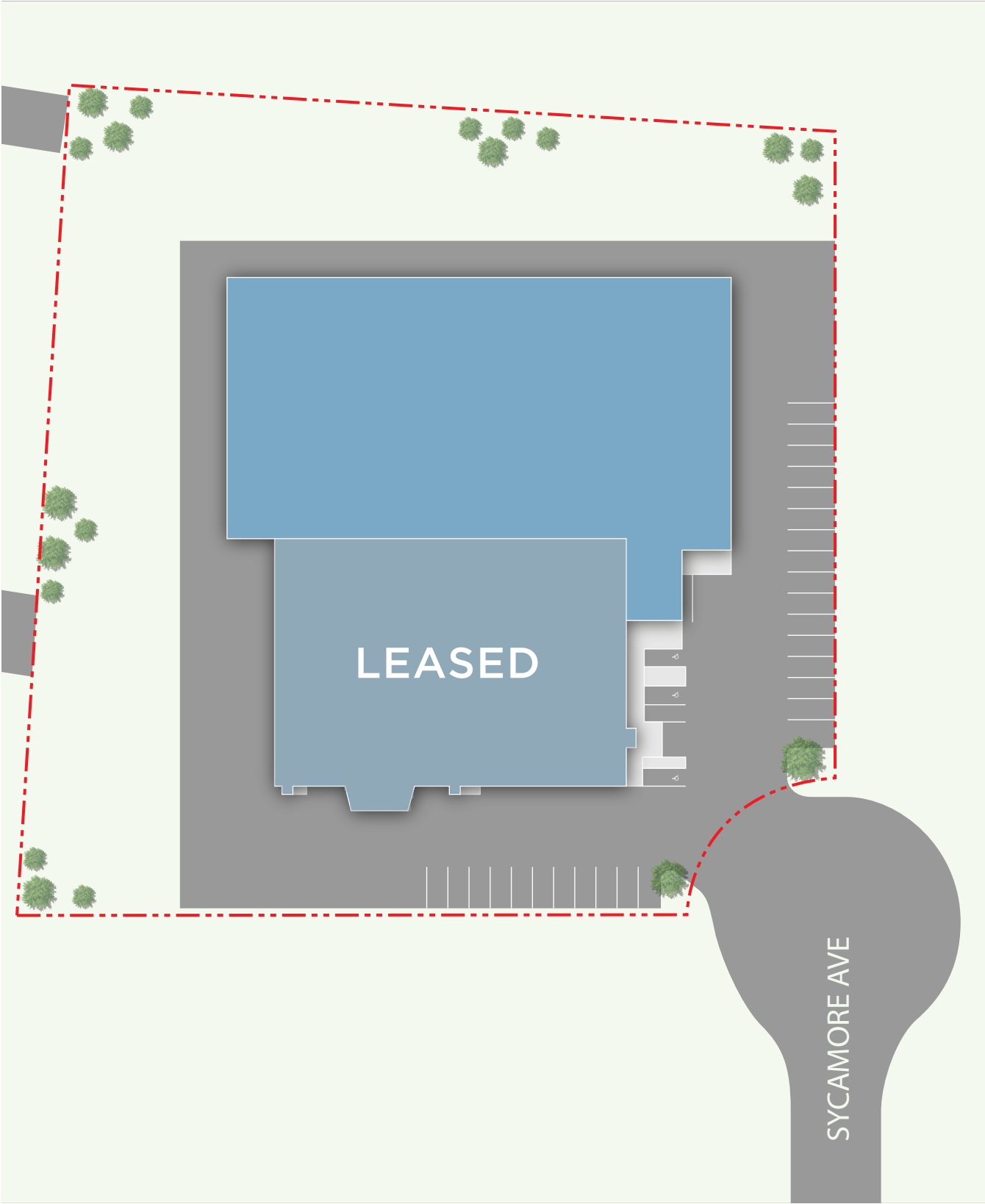
Building Specifications

Total Size:	41,000 SF
Availabilities:	26,000 SF (6,000 SF of office)
Loading:	1 Dock 1 Grade level
Clear Height:	32’
Parking:	1/1,000 SF
Power:	1,200 Amps at 480V





Site Plan:



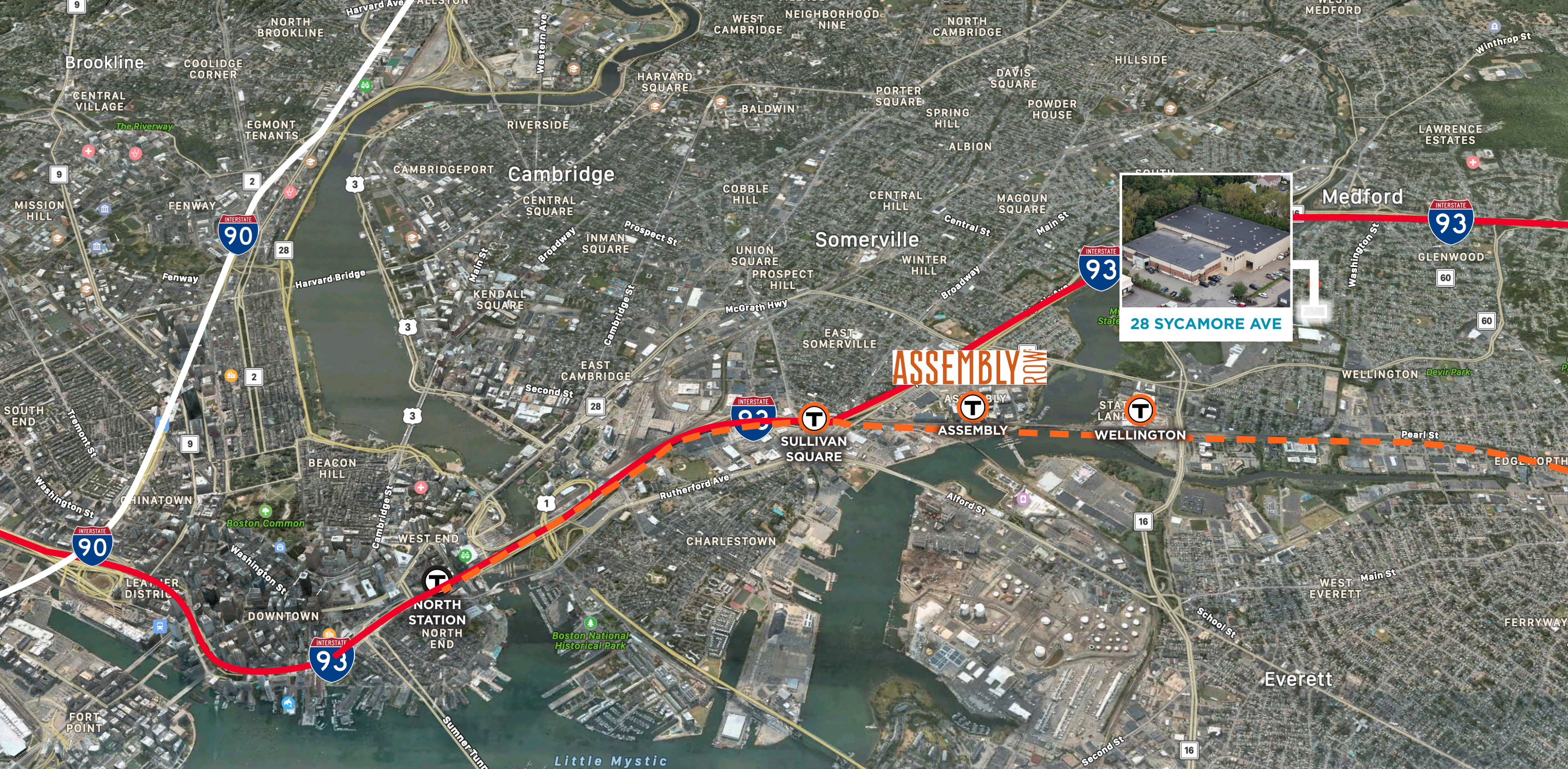
Floor Plan:

1ST FLOOR



MEZZANINE





Access:

 3 Minutes

 Wellington | 7 minute walk

 13 Minutes

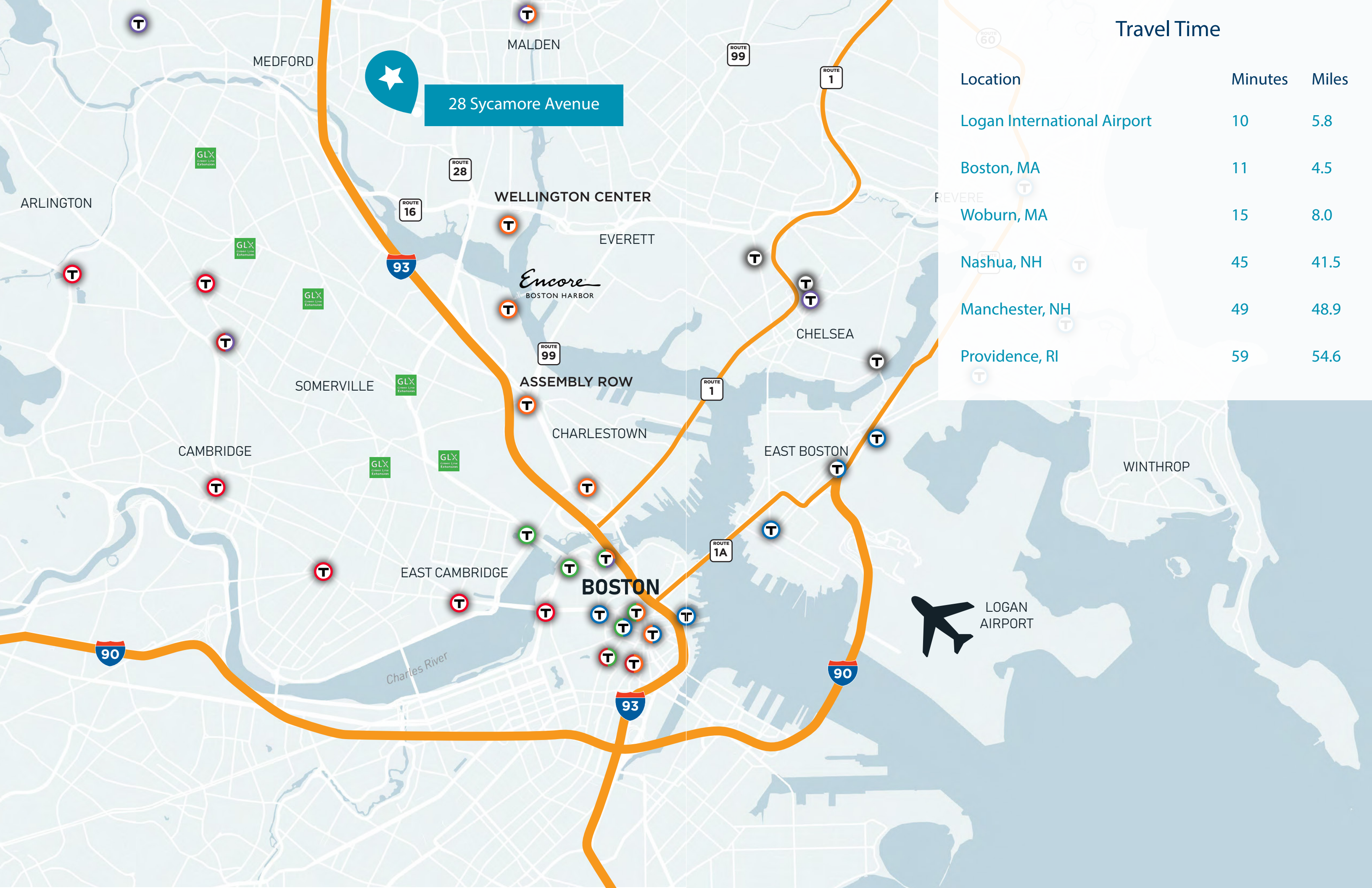
 Downtown Boston
10 Minutes

 Logan Airport
15 Minutes

Nearby Amenities:







Travel Time

Location	Minutes	Miles
Logan International Airport	10	5.8
Boston, MA	11	4.5
Woburn, MA	15	8.0
Nashua, NH	45	41.5
Manchester, NH	49	48.9
Providence, RI	59	54.6

The figure is a map of Route 60, which runs from Boston, MA, south to Providence, RI. The route is highlighted in orange. Various locations are marked along the route with circular icons containing a 'T'. A table titled 'Travel Time' is overlaid on the map, providing the travel time in minutes and the distance in miles for each location. The locations are listed in descending order of distance from Boston. The background shows a light blue map of the region with major roads and water bodies.



28 Sycamore Avenue

Medford, MA

CONTACTS:

Scott Gredler
scott.gredler@cushwake.com
+1 617 204 5975

Philip Verre
philip.verre@cushwake.com
+1 617 204 4124

Jim Murphy
jim.murphy@cushwake.com
+1 617 204 4168