

# BROOKLYN BLVD INDUSTRIAL CENTER

MN  
NORTHWEST

8201 Brooklyn Blvd  
Brooklyn Park, MN



FOR LEASE

SUITE 100

40,082 SF



LEASED BY





## BUILDING SPECIFICATIONS

Available Size	31,695 SF Warehouse
	8,387 SF Office
	40,082 SF Total

Building Size	129,000 SF
---------------	------------

Year Built	2017
------------	------

Zoning	Industrial
--------	------------

Clear Height	28'
--------------	-----

Loading	11 Dock Doors & 5 Drive-ins
---------	-----------------------------

Construction	Reinforced concrete
--------------	---------------------

Parking	55 stalls   21 Truck Stalls
---------	-----------------------------

Lighting	All lights are motion activated LED
----------	-------------------------------------

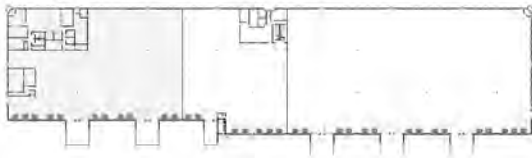
Weight Scale	80 ft. / 120,000 lb. weight scale
--------------	-----------------------------------

- High end finishes throughout including multiple windows and glass
- Convenient location with easy access to I-94
- Available 6/1/2026

FOR LEASE

40,082 SF

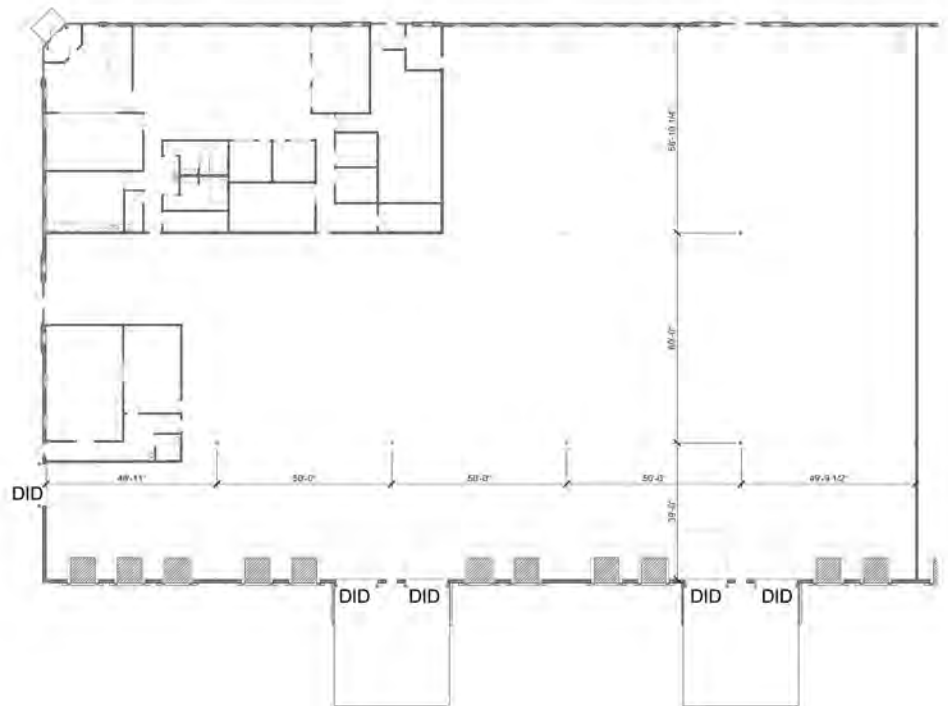
# Building Key



## Floor Plan

Scale 1" = 40'-0"

Office	= 6,842 s.f.
Whse. Office	= 1,545 s.f.
Whse.	= 31,695 s.f.
Total	= 40,082 s.f.



# CONTACT INFORMATION

8201 Brooklyn Blvd  
Brooklyn Park, MN

**Danny McNamara**

952 893 8895

[danny.mcnamara@cushwake.com](mailto:danny.mcnamara@cushwake.com)

This is not an offer or acceptance of an offer to lease space. A lease will only be offered or made in a written agreement signed by landlord. No representation or warranty of any kind is made by landlord unless set forth in a written definitive lease executed by the landlord.



LEASED BY

