

FOR LEASE

UNIT 4

19257 ENTERPRISE WAY
SURREY, BC



2,720 SF Strata Unit
with Grade Loading and
Outside Storage Area



CUSHMAN &
WAKEFIELD

PROPERTY INFORMATION

The property is located on Enterprise Way just one block east of 192nd Street. Enterprise Way lies on the fringe of Langley City, and is in close proximity to an array of amenities. The property offers easy access to 192nd Street, the Langley Bypass, Highway #10, and Fraser Highway.

SALIENT DETAILS

PID	017-546-818
Size	Warehouse 1,214 SF Office 626 SF Mezz 880 SF <hr/> Total 2,720 SF
Loading	1 grade door (12' x 14')
Power	225 amp, 120/208 volt 3-phase
Ceiling Height	19' clear
Zoning	IL-Light Impact Industrial
Base Rent	\$19.50 PSF
Additional Rent	\$9.75 PSF (2025)
Occupancy	Immediate

FEATURES

- Concrete block construction
- Front office, rear grade loading
- 3-Phase power
- Gas fired radiant tube heating
- 2 Washrooms
- Reception and open plan office area plus private office
- Excess yard storage/additional parking at rear
- 3 dedicated parking stalls

Warehouse



Main Floor Office



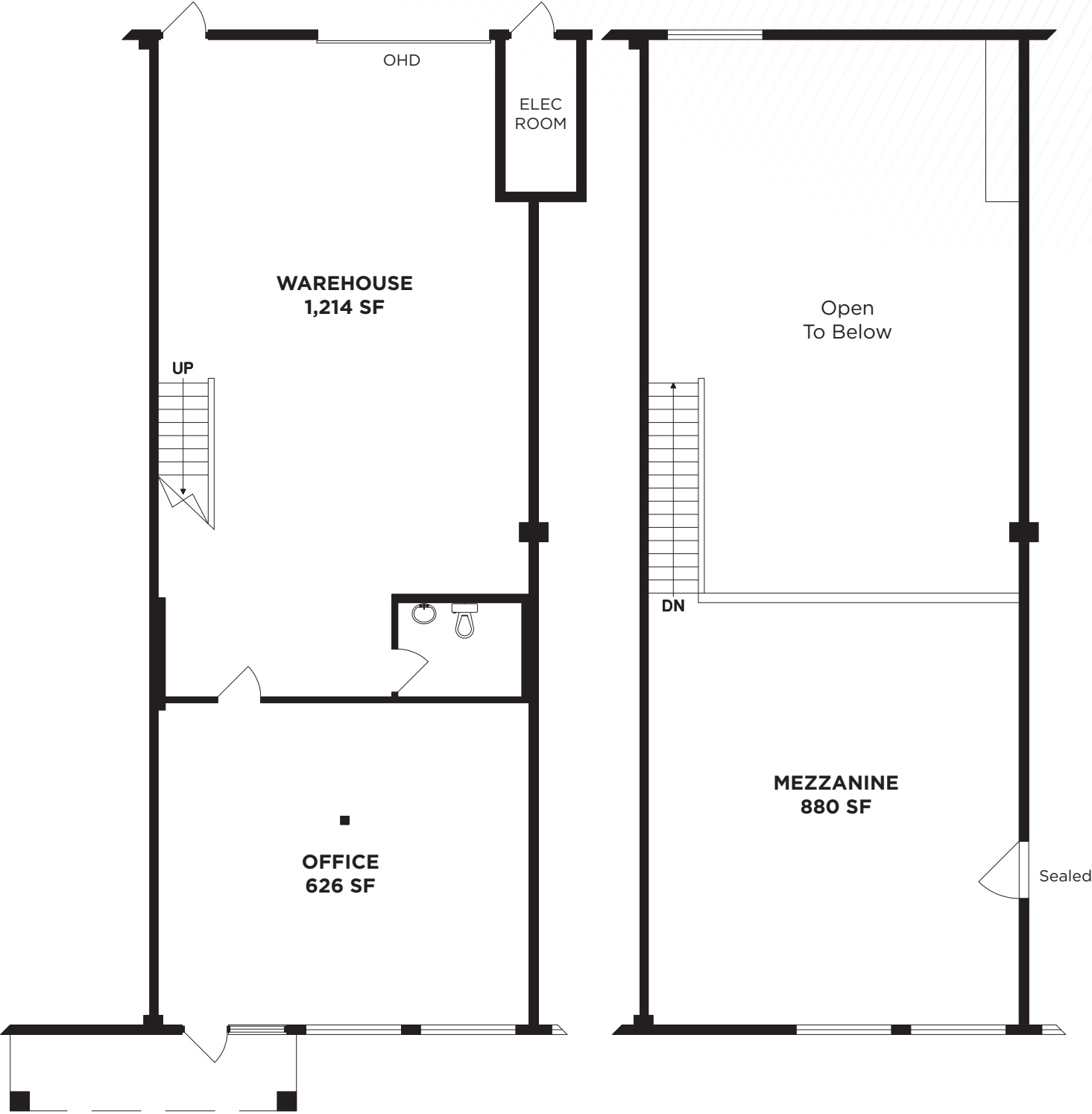
Second Floor Office



Rear Loading



FLOOR PLANS



FOR MORE INFORMATION, PLEASE CONTACT:

Eric Rice

Personal Real Estate Corporation
Vice President, Industrial
+1 604 640 5877
eric.rice@cushwake.com

Karly MacRae

Associate
+1 604 640 5872
karly.macrae@cushwake.com



©2025 Cushman & Wakefield. All rights reserved. The information contained in this communication is strictly confidential. This information has been obtained from sources believed to be reliable but has not been verified. NO WARRANTY OR REPRESENTATION, EXPRESS OR IMPLIED, IS MADE AS TO THE CONDITION OF THE PROPERTY (OR PROPERTIES) REFERENCED HEREIN OR AS TO THE ACCURACY OR COMPLETENESS OF THE INFORMATION CONTAINED HEREIN, AND SAME IS SUBMITTED SUBJECT TO ERRORS, OMISSIONS, CHANGE OF PRICE, RENTAL OR OTHER CONDITIONS, WITHDRAWAL WITHOUT NOTICE, AND TO ANY SPECIAL LISTING CONDITIONS IMPOSED BY THE PROPERTY OWNER(S). ANY PROJECTIONS, OPINIONS OR ESTIMATES ARE SUBJECT TO UNCERTAINTY AND DO NOT SIGNIFY CURRENT OR FUTURE PROPERTY PERFORMANCE.



**CUSHMAN &
WAKEFIELD**