

0.24 ACRES OF MULTI-FAMILY LAND FOR SALE IN NORTH WINNIPEG

193 MCGREGOR ST



Stephen Sherlock
Vice President

T 204 928 5011
C 204 799 5526
steve.sherlock@cwstevenson.ca

Brett Intrater
Executive Vice President

Brett Intrater Personal Real Estate Corporation
T 204 934 6229
C 204 999 1238
brett.intrater@cwstevenson.ca





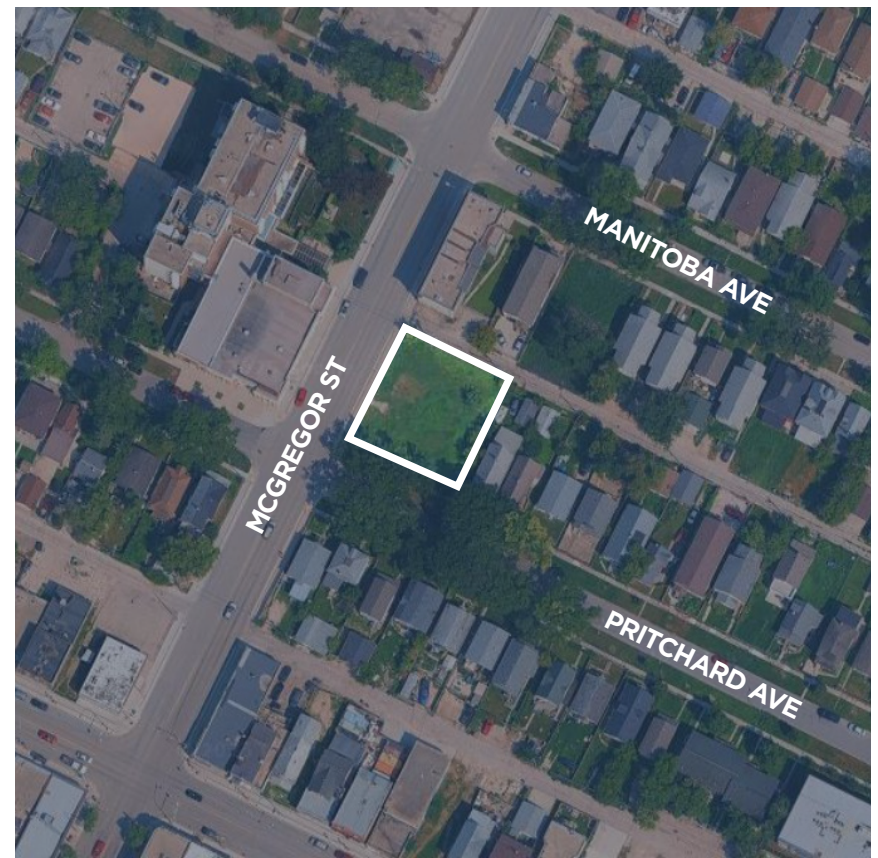
PROPERTY HIGHLIGHTS

0.24 ACRES AVAILABLE

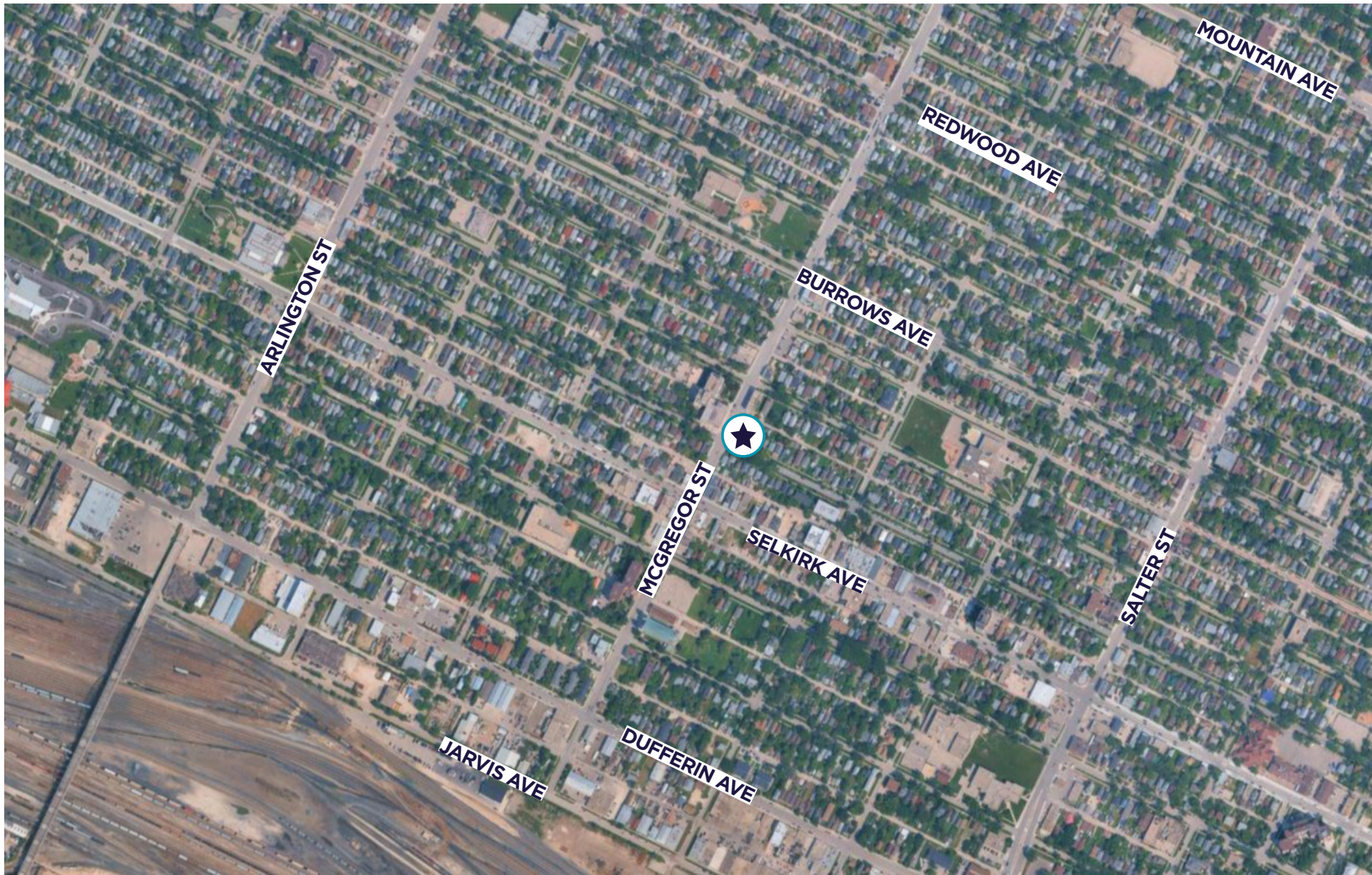
- Close proximity to schools and public transportation
- Zoned R2 with conditional approval from the City of Winnipeg for re-zoning to RMF-L
- Preliminary approval from the City of Winnipeg for 26 units
- Potential for attractive financing through current CMHC MLI Select Program

SALE PRICE: \$389,000

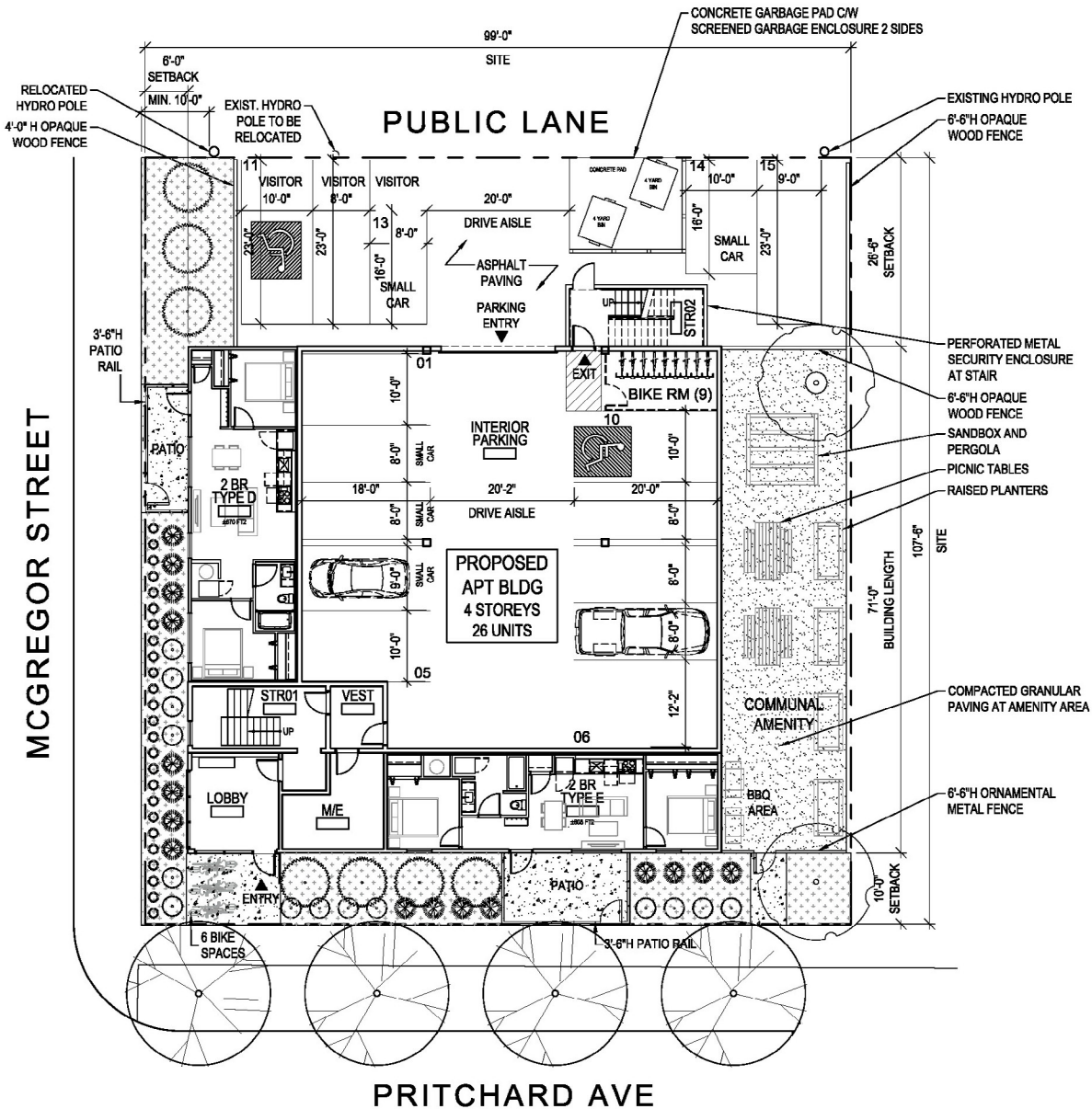
PROPERTY TAX: \$3,114.25₍₂₀₂₅₎



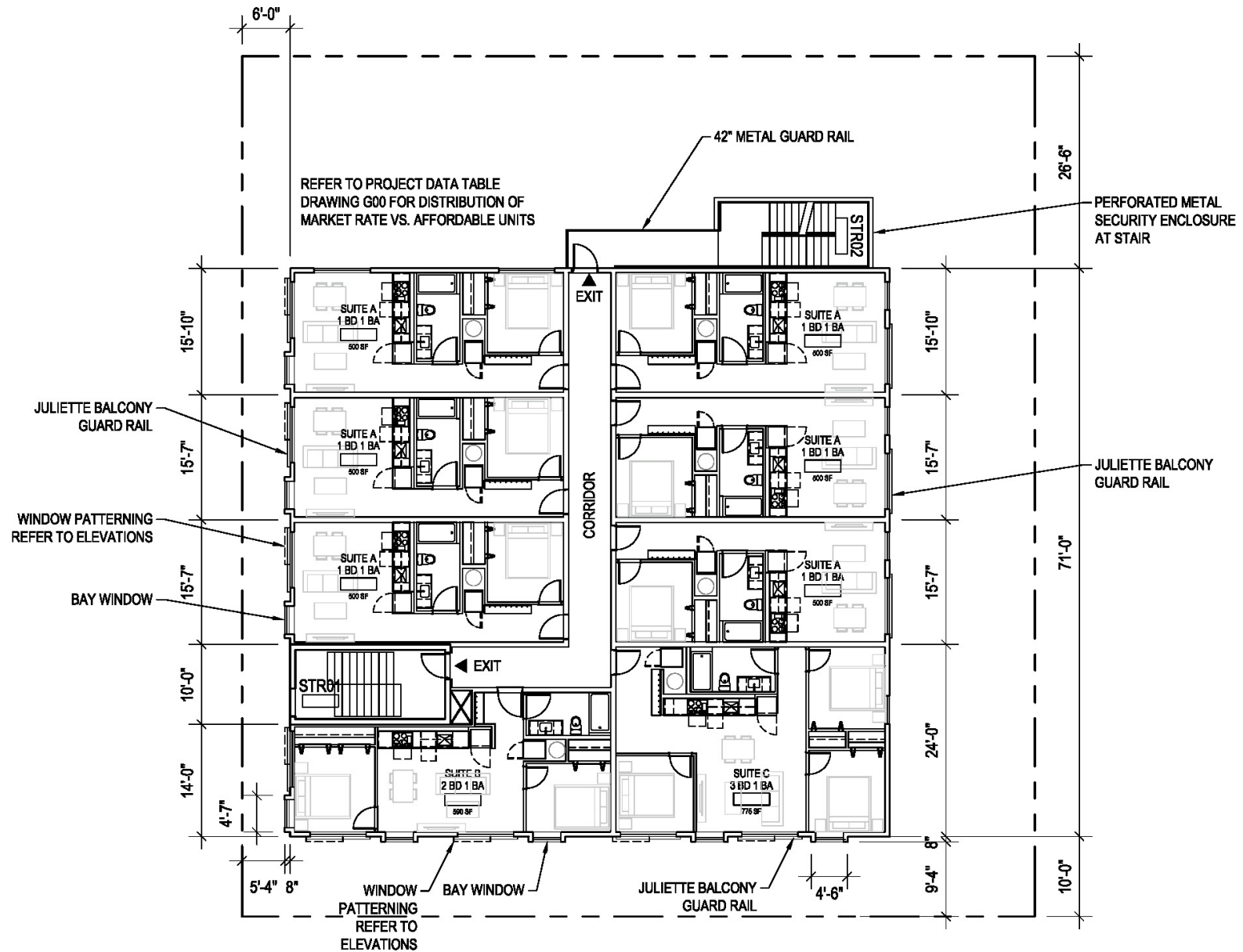
AREA MAP



PLAN



FLOOR PLAN





CONTACT

Stephen Sherlock
Vice President

T 204 928 5011
C 204 799 5526
steve.sherlock@cwstevenson.ca

Brett Intrater
Executive Vice President

Brett Intrater Personal Real Estate Corporation
T 204 934 6229
C 204 999 1238
brett.intrater@cwstevenson.ca



Independently Owned and Operated / A Member of the Cushman & Wakefield Alliance ©2025 Cushman & Wakefield. All rights reserved. The information contained in this communication is strictly confidential. This information has been obtained from sources believed to be reliable but has not been verified. NO WARRANTY OR REPRESENTATION, EXPRESS OR IMPLIED, IS MADE AS TO THE CONDITION OF THE PROPERTY (OR PROPERTIES) REFERENCED HEREIN OR AS TO THE ACCURACY OR COMPLETENESS OF THE INFORMATION CONTAINED HEREIN, AND SAME IS SUBMITTED SUBJECT TO ERRORS, OMISSIONS, CHANGE OF PRICE, RENTAL OR OTHER CONDITIONS, WITHDRAWAL WITHOUT NOTICE, AND TO ANY SPECIAL LISTING CONDITIONS IMPOSED BY THE PROPERTY OWNER(S). ANY PROJECTIONS, OPINIONS OR ESTIMATES ARE SUBJECT TO UNCERTAINTY AND DO NOT SIGNIFY CURRENT OR FUTURE PROPERTY PERFORMANCE.