

±42.27 AC

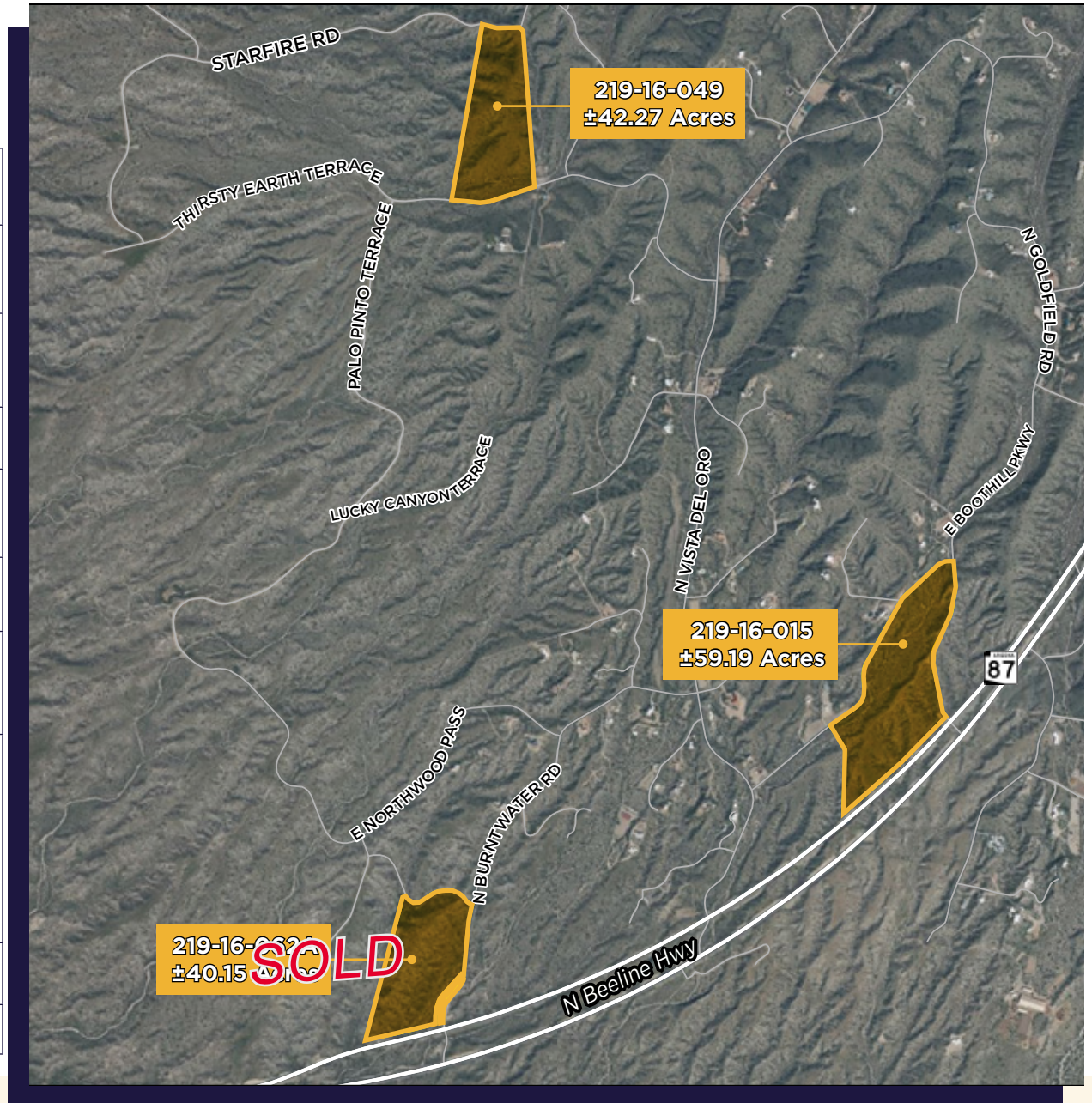
±42.27 AC
SOLD

±59.19 AC

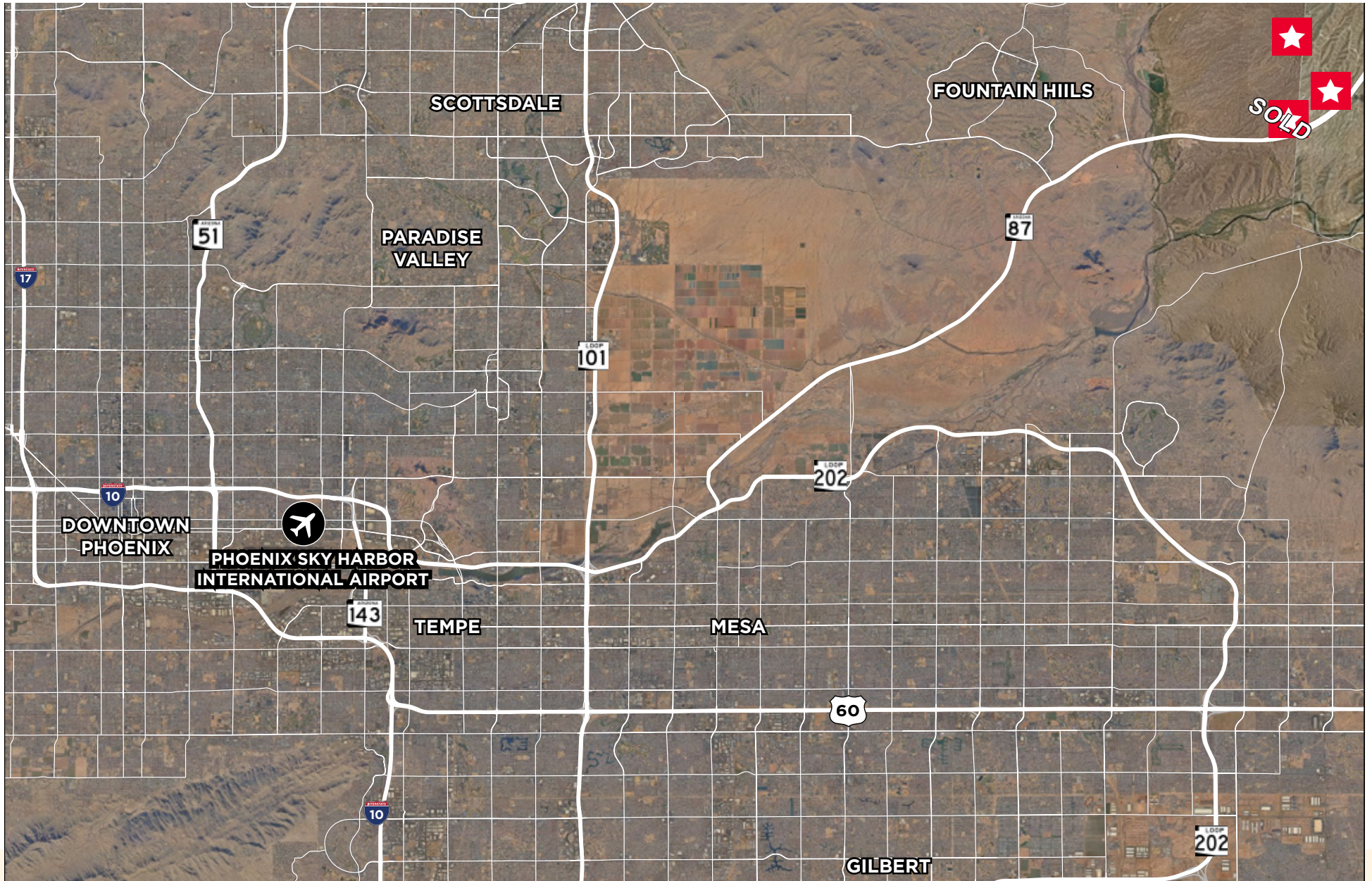
**2 PARCELS LEFT IN GOLDFIELD RANCH
JUST EAST OF FOUNTAIN HILLS, AZ**

PROPERTY FEATURES

Location:	North of Highway 87 ±5 minutes East of Fountain Hills
Total Property Taxes:	\$8,991.00
Size:	±59.19 Acres ±42.27 Acres ±40.15 Acres - <i>SOLD</i>
Zoning:	RU-190 (1 Unit / 190,000 SF)
Highway 87 Traffic Counts:	±10,009 Vehicles Per Day
Future Utilities:	Well & Septic Service
Parcels:	219-16-015 (±59.19 Acres) 219-16-049 (±42.27 Acres) 219-16-062A (±40.15 Acres) - <i>SOLD</i>
Other Info:	<ul style="list-style-type: none"> • One (1) of the two (2) remaining parcels has frontage along Highway 87 • The We-Ko-Pa Casino & Golf Resort is located within 10 minutes from the two (2) remaining parcels
General Plan:	Rural
Price:	Call for pricing



LOCATION MAP



Fort McDowell

FORT MCDOWELL
YAVAPAI NATION
RESERVATION LAND

Fort McDowell Rd.

ARIZONA
87

SOLD

N Beeline Hwy

STATE LAND

N Bush Hwy

Saquaro Lake

CONTACT

BRIAN LEE
Executive Managing Director
+1 602 339 2020
brian.lee@cushwake.com

WILL FRENCH
Senior Director
+1 602 738 0118
will.french@cushwake.com

HUNTER GRAY
Associate
+1 480 772 0786
hunter.gray@cushwake.com

2555 E Camelback Rd Ste 400
Phoenix, AZ 85016
Main: +1 602 954 9000
F: +1 602 253 0528
cushmanwakefield.com

©2026 Cushman & Wakefield. All rights reserved. The information contained in this communication is strictly confidential. This information has been obtained from sources believed to be reliable but has not been verified. NO WARRANTY OR REPRESENTATION, EXPRESS OR IMPLIED, IS MADE AS TO THE CONDITION OF THE PROPERTY (OR PROPERTIES) REFERENCED HEREIN OR AS TO THE ACCURACY OR COMPLETENESS OF THE INFORMATION CONTAINED HEREIN, AND SAME IS SUBMITTED SUBJECT TO ERRORS, OMISSIONS, CHANGE OF PRICE, RENTAL OR OTHER CONDITIONS, WITHDRAWAL WITHOUT NOTICE, AND TO ANY SPECIAL LISTING CONDITIONS IMPOSED BY THE PROPERTY OWNER(S). ANY PROJECTIONS, OPINIONS OR ESTIMATES ARE SUBJECT TO UNCERTAINTY AND DO NOT SIGNIFY CURRENT OR FUTURE PROPERTY PERFORMANCE.



**CUSHMAN &
WAKEFIELD**