



**CUSHMAN &
WAKEFIELD**

FOR LEASE

1150 S. Bristol Street
Santa Ana, CA 92704

NORTHGATE MARKET



1,200 SF Retail Location

Property Highlights

- Open Space with Great Retail Frontage
- Highly Populated Retail Center
- Signage Opportunity
- Located on Bristol Avenue, a Major thoroughfare of Santa Ana
- Located Close to I-405, 55, I-5 Freeways
- Zoned — C1
- 1 Restroom

Asking \$4,500 Monthly includes NNN & Utilities

Nathan Demosthenes

Director

+1 949 955 7654

nathan.demosthenes@cushwake.com

LIC #01927262

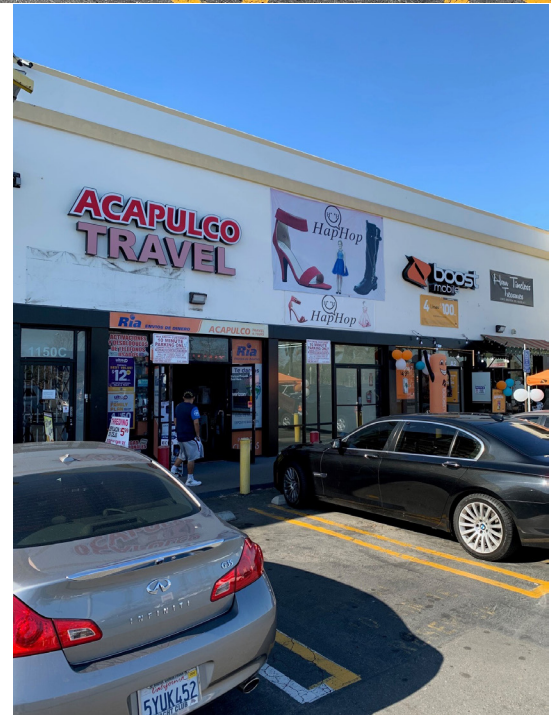
Joseph Lising

Managing Director

+1 949 372 4896

joseph.lising@cushwake.com

LIC #01248258



1811 Von Karman Ave,
Suite 1000

Irvine, CA 92612

Main +1 949 474 4004

Fax +1 949 474 0405

cushmanwakefield.com

©2020 Cushman & Wakefield. All rights reserved. The information contained in this communication is strictly confidential. This information has been obtained from sources believed to be reliable but has not been verified. No warranty or representation, express or implied, is made as to the condition of the property (or properties) referenced herein or as to the accuracy or completeness of the information contained herein, and same is submitted subject to errors, omissions, change of price, rental or other conditions, withdrawal without notice, and to any special listing conditions imposed by the property owner(s). Any projections, opinions or estimates are subject to uncertainty and do not signify current or future property performance.



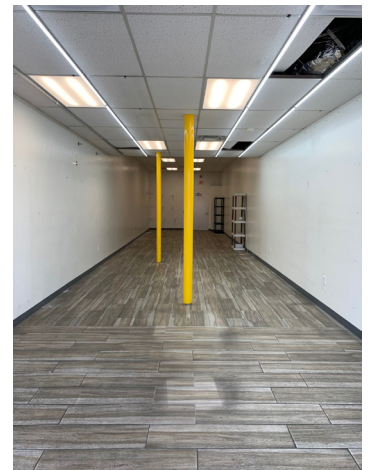
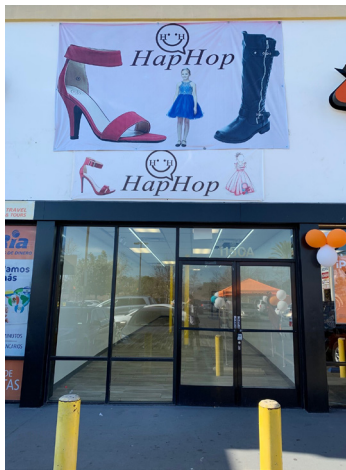
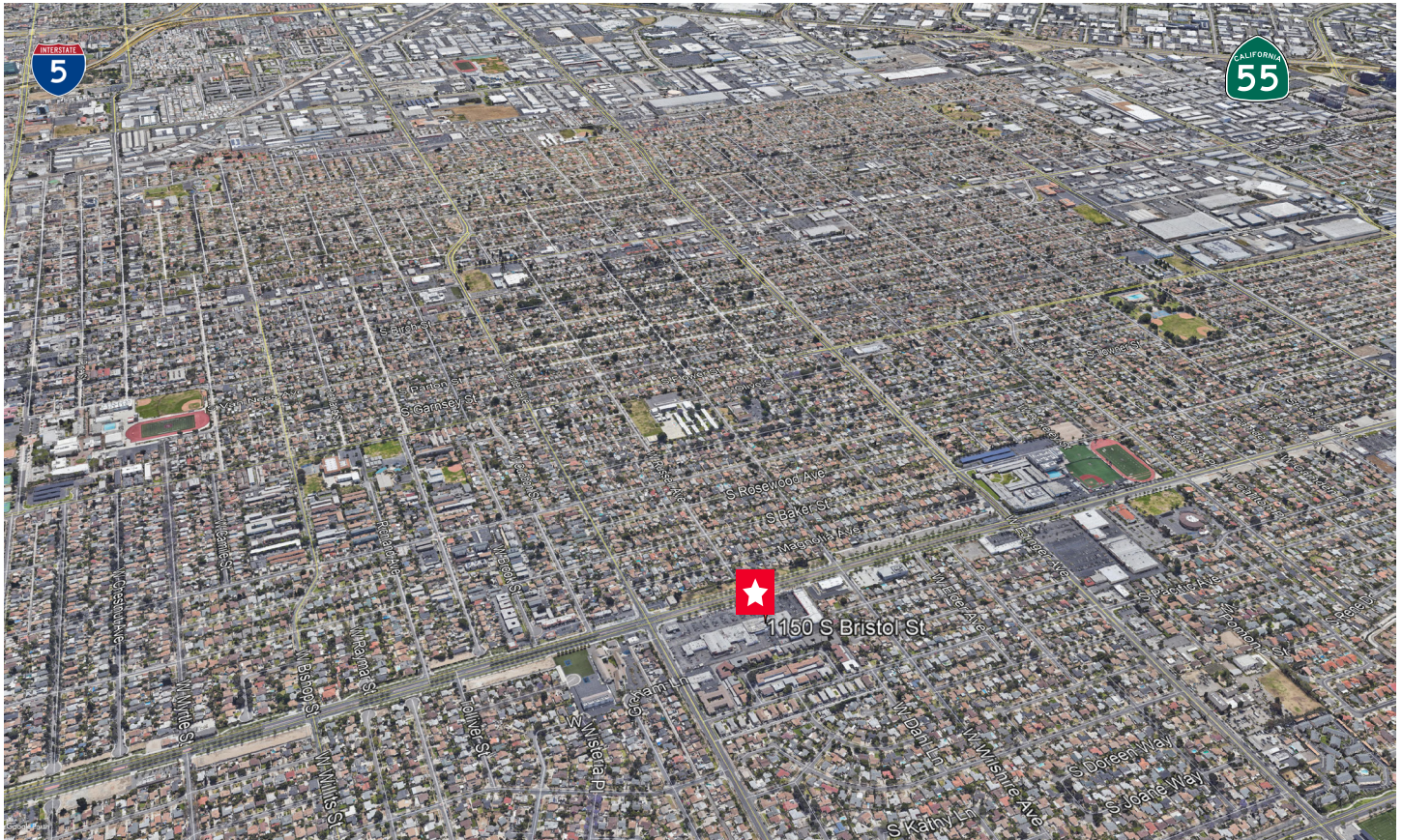
**CUSHMAN &
WAKEFIELD**

FOR LEASE

1150 S. Bristol Street

Santa Ana, CA 92704

Aerial / Location Map



Nathan Demosthenes

Director

+1 949 955 7654

nathan.demosthenes@cushwake.com

LIC #01927262

Joseph Lising

Managing Director

+1 949 372 4896

joseph.lising@cushwake.com

LIC #01248258

18111 Von Karman Ave,

Suite 1000

Irvine, CA 92612

Main +1 949 474 4004

Fax +1 949 474 0405

cushmanwakefield.com

©2020 Cushman & Wakefield. All rights reserved. The information contained in this communication is strictly confidential. This information has been obtained from sources believed to be reliable but has not been verified. No warranty or representation, express or implied, is made as to the condition of the property (or properties) referenced herein or as to the accuracy or completeness of the information contained herein, and same is submitted subject to errors, omissions, change of price, rental or other conditions, withdrawal without notice, and to any special listing conditions imposed by the property owner(s). Any projections, opinions or estimates are subject to uncertainty and do not signify current or future property performance.

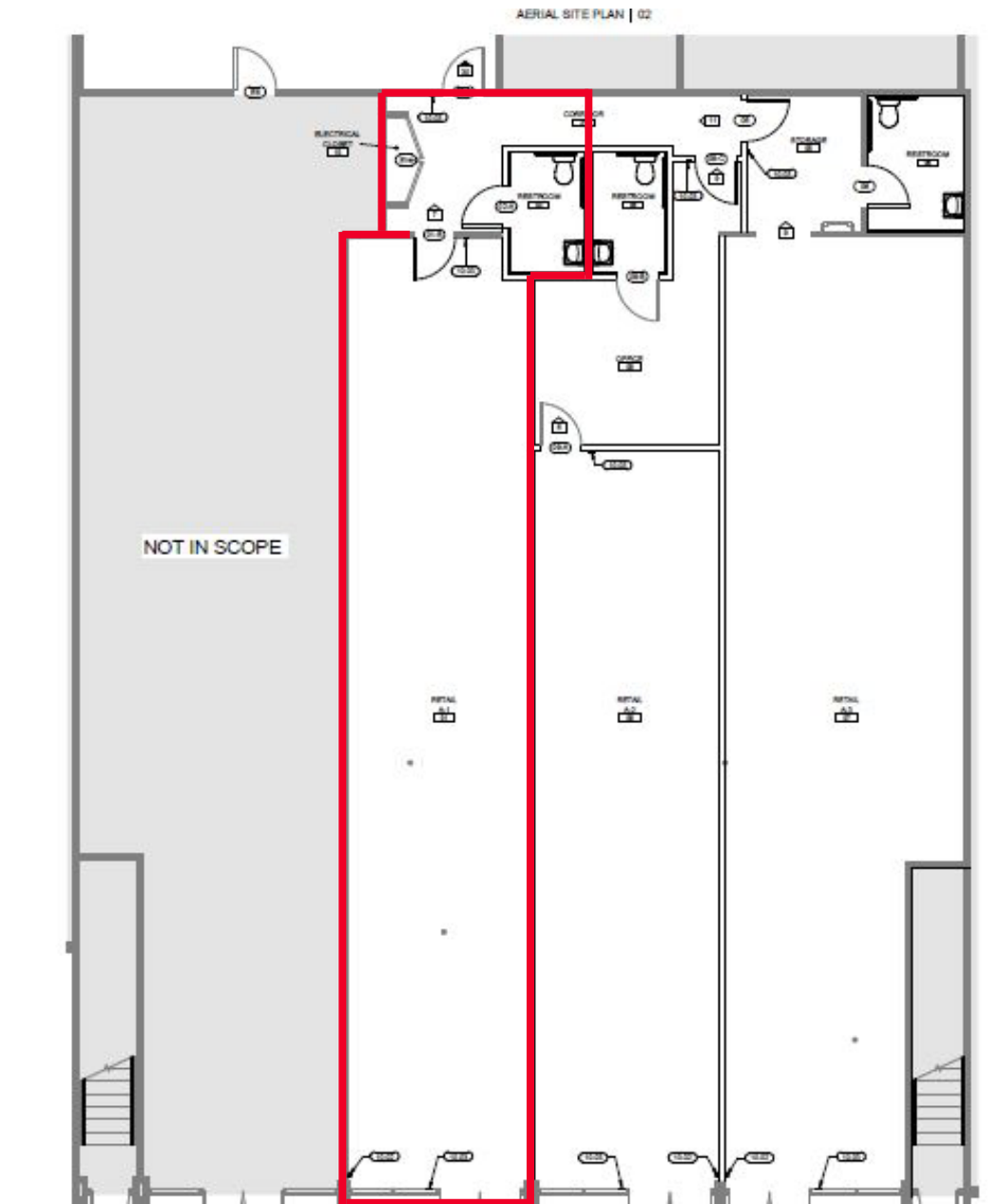


**CUSHMAN &
WAKEFIELD**

FOR LEASE

1150 S. Bristol Street
Santa Ana, CA 92704

Floor Plan



Nathan Demosthenes

Director

+1 949 955 7654

nathan.demosthenes@cushwake.com

LIC #01927262

Joseph Lising

Managing Director

+1 949 372 4896

joseph.lising@cushwake.com

LIC #01248258

18111 Von Karman Ave,

Suite 1000

Irvine, CA 92612

Main +1 949 474 4004

Fax +1 949 474 0405

cushmanwakefield.com

©2020 Cushman & Wakefield. All rights reserved. The information contained in this communication is strictly confidential. This information has been obtained from sources believed to be reliable but has not been verified. No warranty or representation, express or implied, is made as to the condition of the property (or properties) referenced herein or as to the accuracy or completeness of the information contained herein, and same is submitted subject to errors, omissions, change of price, rental or other conditions, withdrawal without notice, and to any special listing conditions imposed by the property owner(s). Any projections, opinions or estimates are subject to uncertainty and do not signify current or future property performance.