

# HOWELL COMMONS

**NORTHEAST CORNER OF  
GRAND RIVER AVE & M-59**

**23 ACRES  
BUILD-TO-SUIT LEASE OR SALE  
OUTLOT SALES AVAILABLE**



Kyle Passage  
Senior Associate  
+1248 358 6113  
kyle.passage@cushwake.com

Steve Kozak  
Director  
+1248 358 6107  
steve.kozak@cushwake.com



**Schafer  
Construction, Inc.**

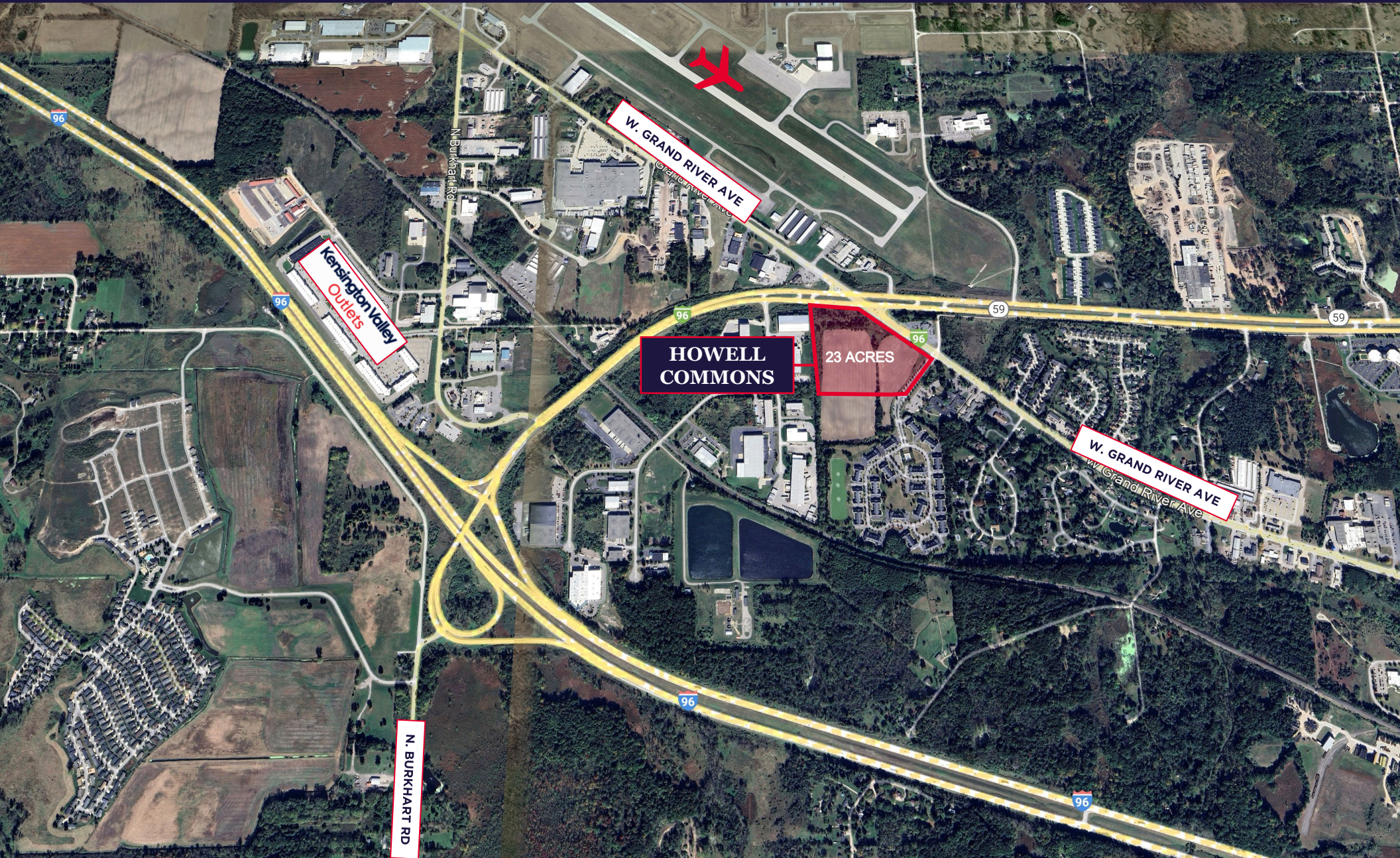


**CUSHMAN &  
WAKEFIELD**



# AERIAL

HOWELL COMMONS





# RENDERING

HOWELL COMMONS



# AVAILABILITY

## Howell Commons

Acres:	23
Zoning:	Regional Service Commercial
APN:	06 -28-400 -012 & 06 -28-401-023
Use:	Prime retail, medical services, and mixed -use site
Neighbors:	Howell Municipal Airport, Kensington Valley Outlets, Trans West Industrial Ctr, Tomato Brothers
Frontage :	~1,400 SF
Asking Rent:	Contact Broker

## COMMENTS

- High growth area
- Less than a mile to I -96
- 27,000 traffic count intersection at Highland Rd (M-59) and Grand River Ave

