

SUBLEASE OPPORTUNITY

55 UNIVERSITY AVENUE

SUITES 701 & 702



**CUSHMAN &
WAKEFIELD**

PROPERTY HIGHLIGHTS

- Move-in ready, fully furnished office space in the financial core
- Suite 701 (1,830 SF): Built out with a mix of offices, a meeting room and kitchenette
- Suites 702 (1,358 SF): Built out with open area seating (6 desks), 10 person boardroom, and kitchenette
- Building offers PATH connectivity, tenant and visitor parking, conference room facilities, fitness centre and 24/7 security

PROPERTY DETAILS

**NET RENT:**

Negotiable (Call Listing Agent)

**OCCUPANCY:**

August 1, 2025

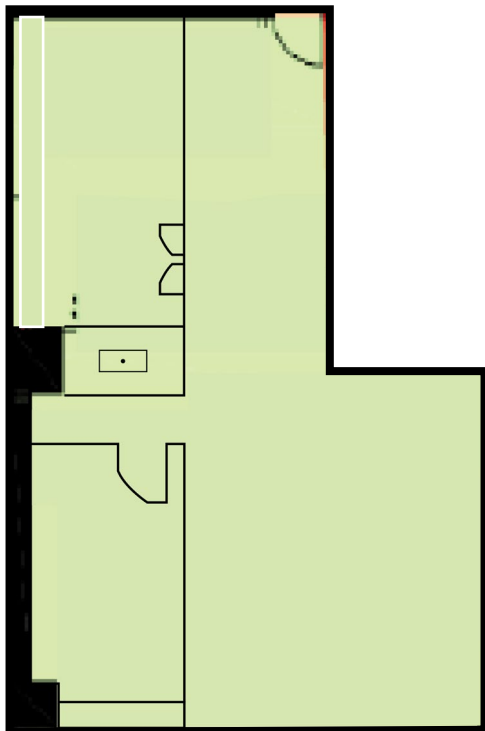
**ADDITIONAL RENT:**

\$29.24

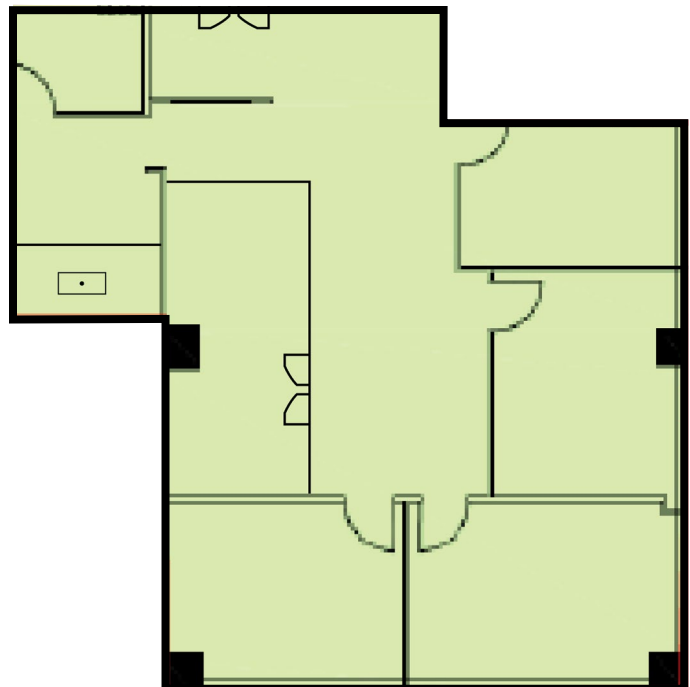
**SUBLEASE TERM:**

October 30, 2027

SUITE 702



SUITE 701



PHOTOS



FOR MORE INFORMATION, PLEASE CONTACT:

STEVEN SOTIROFF

Associate

+1 647 580 5030

steven.sotiroff@cushwake.com

DEREK WOODBURN

Senior Vice President

+1 416 738 7394

derek.woodburn@cushwake.com



©2025 Cushman & Wakefield. All rights reserved. The information contained in this communication is strictly confidential. This information has been obtained from sources believed to be reliable but has not been verified. NO WARRANTY OR REPRESENTATION, EXPRESS OR IMPLIED, IS MADE AS TO THE CONDITION OF THE PROPERTY (OR PROPERTIES) REFERENCED HEREIN OR AS TO THE ACCURACY OR COMPLETENESS OF THE INFORMATION CONTAINED HEREIN, AND SAME IS SUBMITTED SUBJECT TO ERRORS, OMISSIONS, CHANGE OF PRICE, RENTAL OR OTHER CONDITIONS, WITHDRAWAL WITHOUT NOTICE, AND TO ANY SPECIAL LISTING CONDITIONS IMPOSED BY THE PROPERTY OWNER(S). ANY PROJECTIONS, OPINIONS OR ESTIMATES ARE SUBJECT TO UNCERTAINTY AND DO NOT SIGNIFY CURRENT OR FUTURE PROPERTY PERFORMANCE.



**CUSHMAN &
WAKEFIELD**