

The Shoppes at Clearwater Park

Chestermere, AB



VIDEO TOUR
CLEARWATER PARK



PROPERTY OVERVIEW

Welcome to Chestermere's newest master planned, mixed-use development located in the east Chestermere area of Rocky View County. Chestermere can be accessed from multiple points along the eastern and western arterial roads. Primary north and south arterials include Stoney Trail, HWY 791, HWY 797, east and west arterials include Trans Canada HWY 1. By Alberta's development leaders Centron, this 580 acres of development will be home to over 3,350 homes and 10,650 residents, with up to 1,500 single family rentals which will accelerate population density/consumer base.

Look forward to developments that include a diverse and inclusive mix of residences, single-family and multi-family houses, purpose-built residential leasing, a senior's residential campus, plus neighbourhood retail, light commercial and industrial. As part of its phased development, Clearwater retail plans on developing approx. 20,000 square feet of services including, confectionaries, specialty medical, food, and more, all on a beautiful retail promenade.

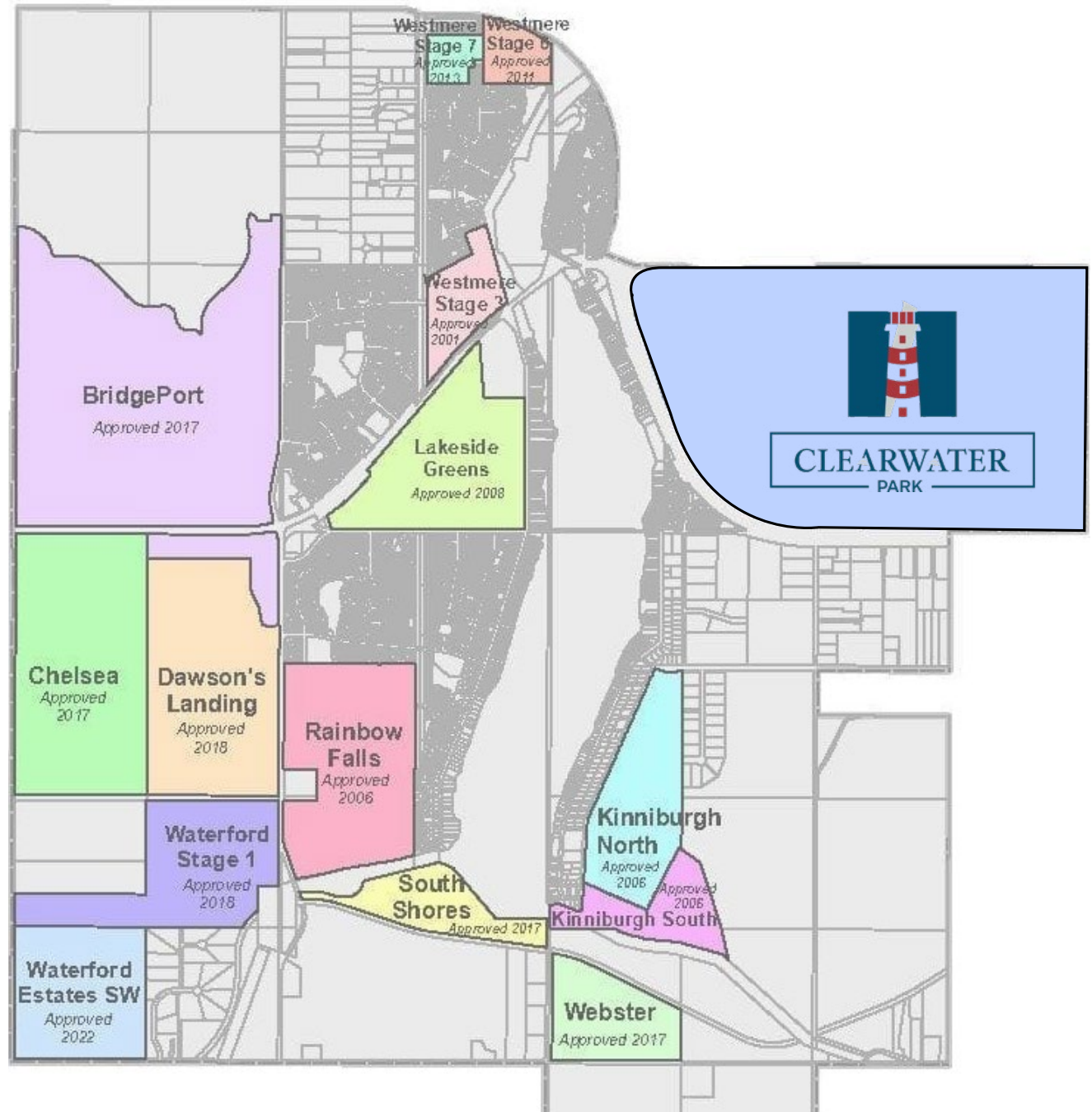
WELCOME TO



THE SHOPPES
AT CLEARWATER PARK

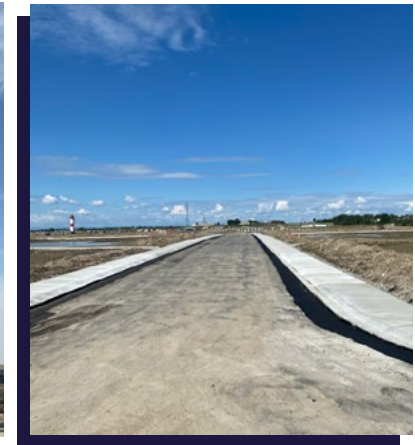


LOCATION MAP

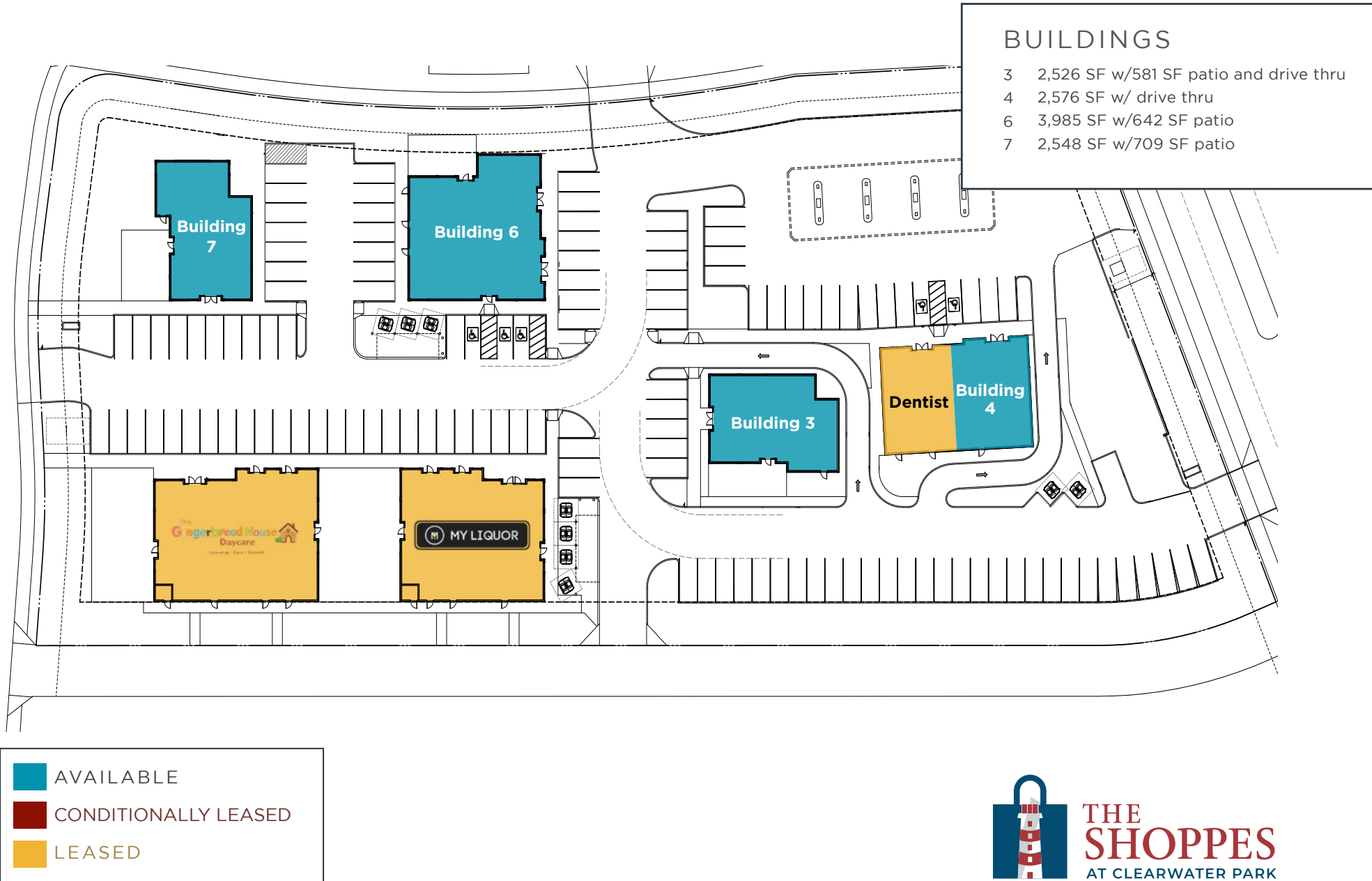


PROPERTY HIGHLIGHTS

- Clearwater Park by Alberta development leaders Centron, is a master planned, mixed-use development located in the East Chestermere area of Rocky View County, just minutes from Calgary off the TransCanada Highway
- Clearwater will be home to 10,650 residents (up to 1,500 single family rentals)
- Trans Canada HWY 1 is a major arterial from East/West
- Primary north and south arterials include Stoney Trail, HWY 791 and HWY 797
- Clearwater Park encompasses over 580 acres of development opportunity
- Clearwater Park will provide a diverse and inclusive mix of residences including single family & multi-family houses, purpose-built residential leasing, seniors residential campus, neighbourhood retail, and light commercial & industrial
- Recreation amenities include water features, skating rink, a community clubhouse, school sites with playfields, and numerous walking paths



SITE PLAN



LOCAL AMENITIES



RESTAURANTS

- 1 Subway
- 2 Harvey's
- 3 Boston Pizza
- 4 Edo Japan
- 5 Dairy Queen
- 6 Starbucks
- 7 Little Ceasars
- 8 Domino's Pizza
- 9 A&W
- 10 Tim Hortons



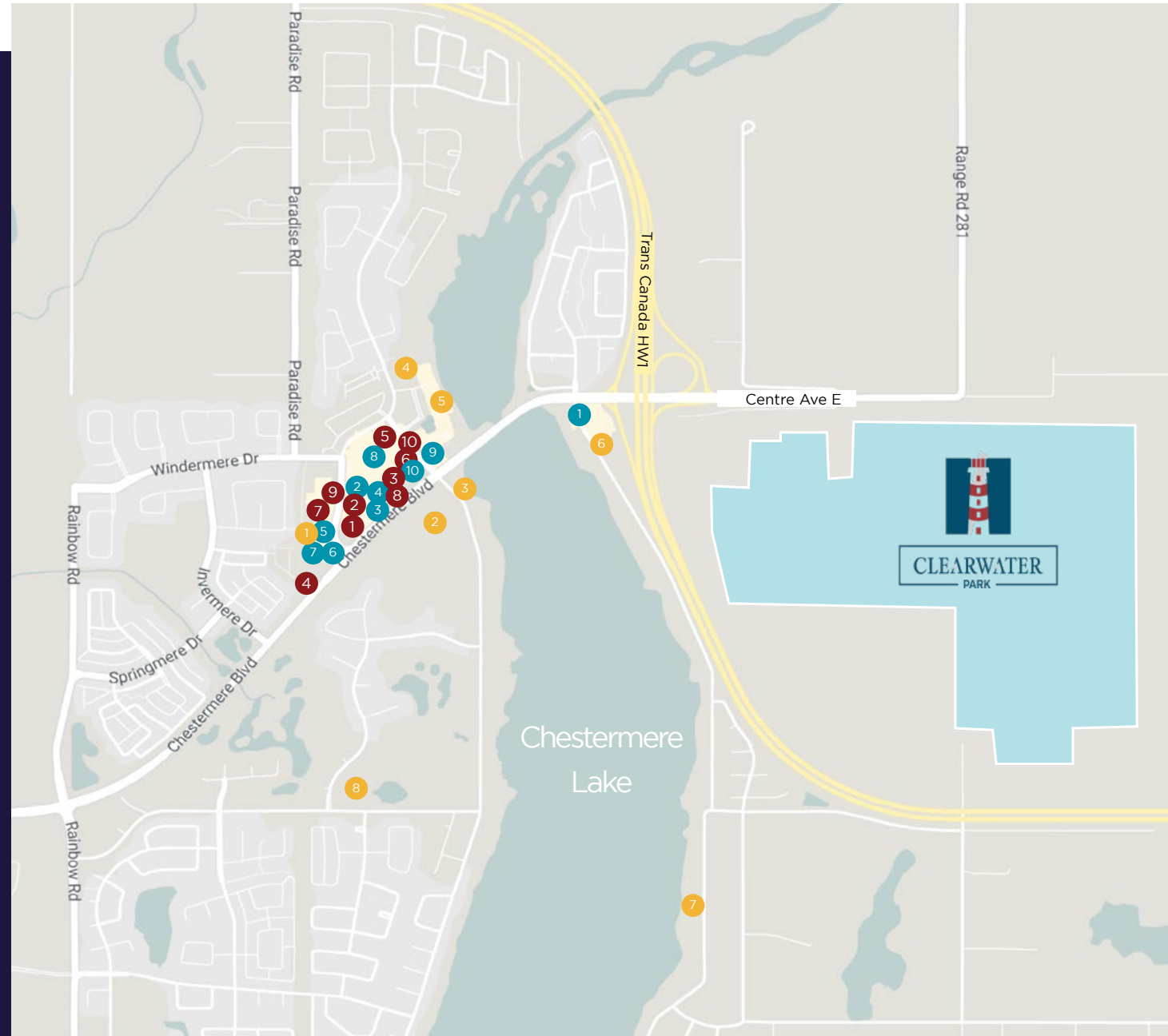
OTHER AMENITIES

- 1 Shoppers Drug Mart
- 2 RBC
- 3 Scotiabank
- 4 CIBC
- 5 Safeway
- 6 Petro Canada
- 7 Dollarama
- 8 Jiffy Lube
- 9 Tirecraft Chestermere
- 10 Western Union Agent Location



POINTS OF INTEREST

- 1 Chestermere Lake Registry
- 2 Chestermere Regional Community Centre
- 3 Anniversary Park
- 4 Chestermere Public Library
- 5 John Peake Memorial Park
- 6 Chestermere Emergency Services
- 7 Yacht Club
- 8 Lakeside Golf Club



PARTICULARS

AVAILABLE UNITS	2,526 SF & UP, drive thru opportunities
RENT	Market
OPERATING COST	\$12.00/SF
POSSESSION	Fall 2026



DEMOGRAPHICS

	1 km	3 km	5 km
 POPULATION	10,650 (under development)	11,604	20,642
 AVERAGE HOUSEHOLD INCOME	\$159,968	\$158,685	\$154,086
 MEDIAN AGE	35	37	36





CONTACT

RYAN RUTHERFORD

Vice President

+1 403 973 4677

ryan.rutherford@cushwake.com

Cushman & Wakefield

Bow Valley Square 4

Suite 2400, 250 6th Avenue SW

Calgary, Alberta T2P 3H7

cushmanwakefield.com