

CROWN CABOT

FINANCIAL CENTER

28202 Cabot | Laguna Niguel



Built with you in mind

PROPERTY HIGHLIGHTS



4/1,000 parking ratio
with both surface and
structured spaces



Available on-site
tenant storage



Within walking distance
to Amtrak/Metrolink



Excellent freeway visibility
and direct access to the
5 and 73 Freeways



Conveniently located near
shopping, Mission Hospital
and Saddleback College

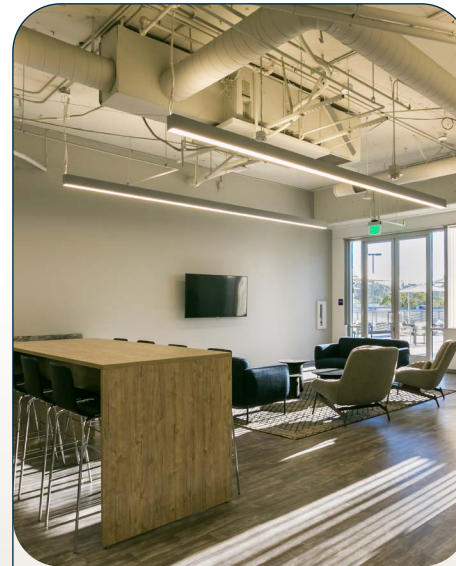
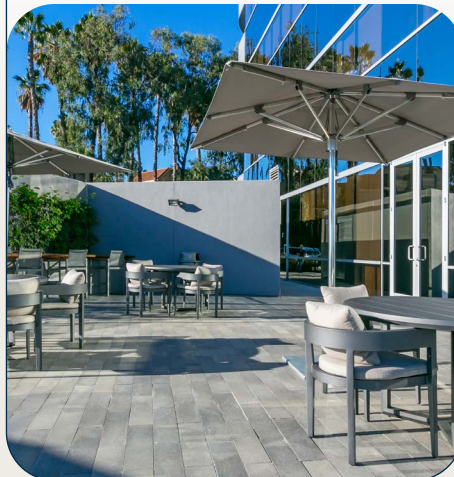


Adjacent to a
mixed-use development,
with executive and
residential housing



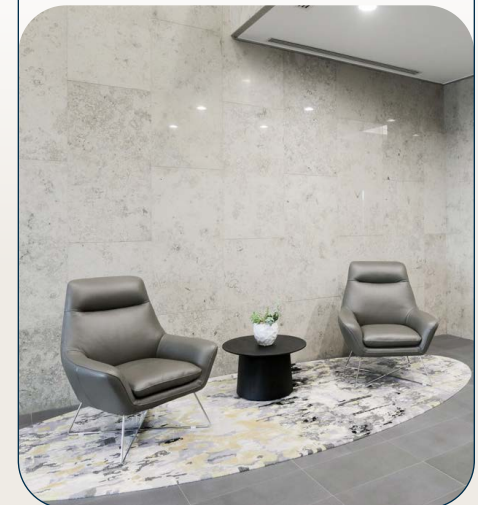
Move right into our
move-in ready suites,
available from 2,500 SF

Our modern and inviting
outdoor courtyard with
lounge seating, shade
umbrellas, and Wi-Fi
promotes relaxation,
collaboration, and casual
gatherings



Recharge in the **tenant lounge** furnished with
a pool table, TV, and
comfortable seating areas
where guests can relax
and socialize

Arrive in style through
the elegant **lobby** that
welcomes tenants and
guests with a refined and
inviting atmosphere



The ideal location to

BALANCE WORK, LIFE AND PLAY



Everything you need,

ON AND OFF THE CLOCK



Floorplans

Suite	Size (RSF)	Contiguous (RSF)	Details	Virtual Link
110	2,914		Features 5 offices, conference room, IT/workroom, and kitchen. Available 3/1/26	
120	4,631		Features 8 offices, 2 conference rooms, IT/workroom and open break room	
205 & 225	4,132		Features 6 offices, conference room, kitchen and storage. Divisible to 1,500 SF. Available 9/1/26	
525	3,088		Features 6 private offices, conference room and open kitchen	
600	4,313	19,557	NEW SPEC SUITE! Features 6 private offices, 2 conference rooms and open break room	360
605	2,524		NEW SPEC SUITE! Features 5 private offices, conference room and open break room	360
610	12,720		Features 3 private offices, balconies and open area	360



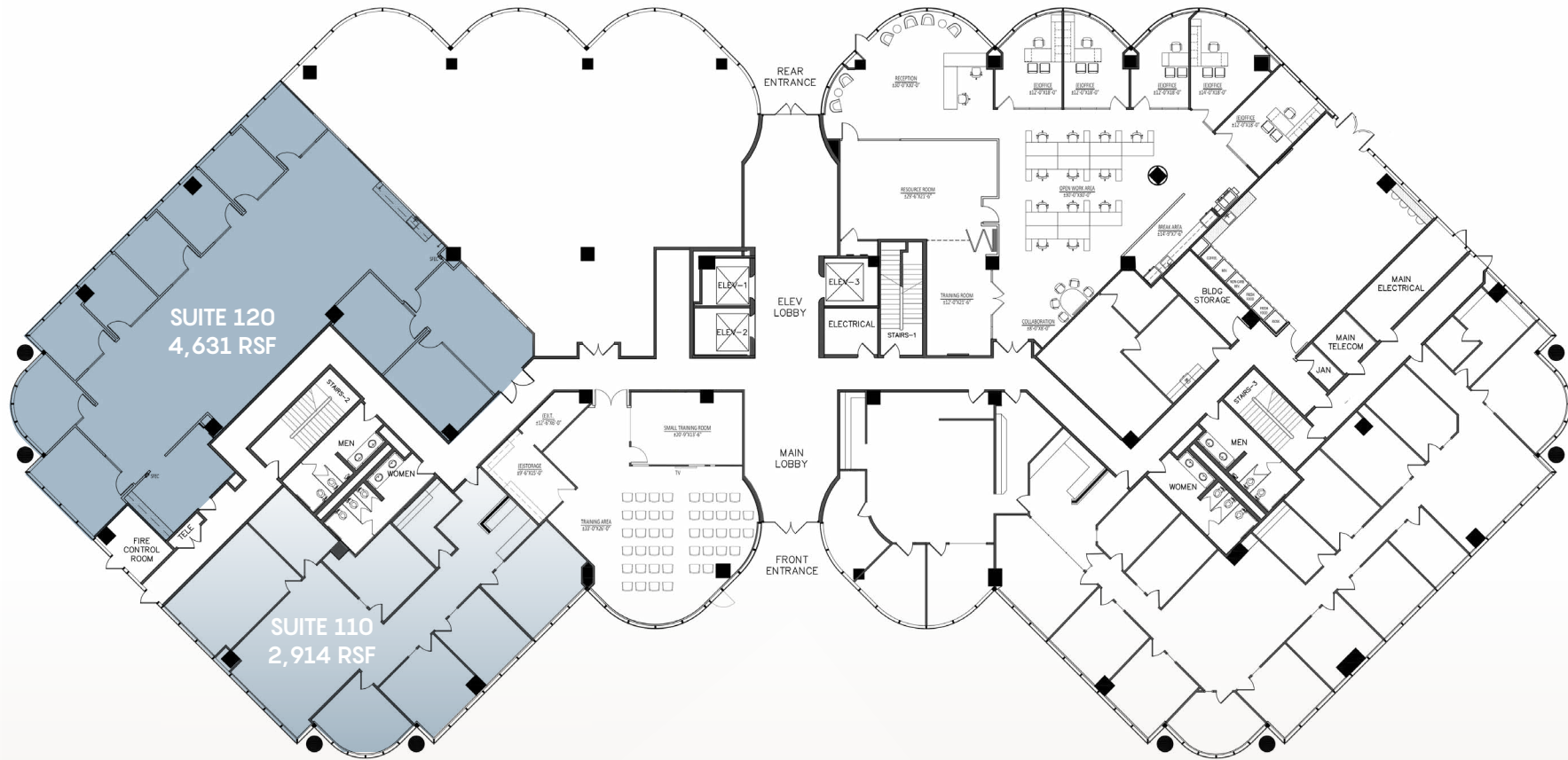
1st Floor

SUITE 110 | 2,914 RSF

Features 5 offices, conference room, IT/workroom, and kitchen. Available 3/1/26

SUITE 120 | 4,631 RSF

Features 8 offices, 2 conference rooms, IT/workroom, and open break room



JOHN HARTY

+1 949 372 4910

john.harty@cushwake.com

Lic. #01121203

JASON WARD

+1 949 955 7640

jason.ward@cushwake.com

Lic. #01802243

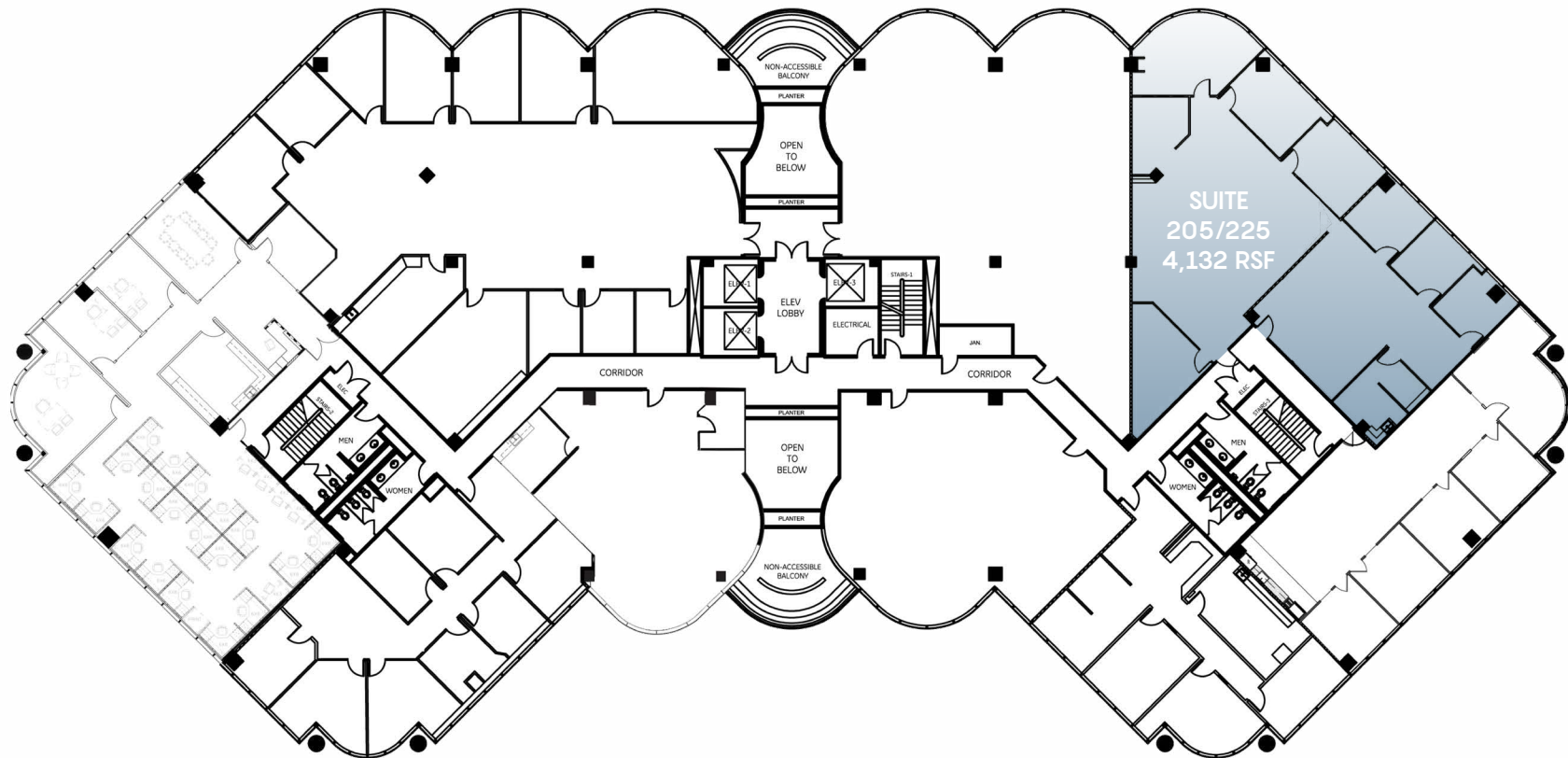


©2025 Cushman & Wakefield. All rights reserved. The information contained in this communication is strictly confidential. This information has been obtained from sources believed to be reliable but has not been verified. NO WARRANTY OR REPRESENTATION, EXPRESS OR IMPLIED, IS MADE AS TO THE CONDITION OF THE PROPERTY (OR PROPERTIES) REFERENCED HEREIN OR AS TO THE ACCURACY OR COMPLETENESS OF THE INFORMATION CONTAINED HEREIN, AND SAME IS SUBMITTED SUBJECT TO ERRORS, OMISSIONS, CHANGE OF PRICE, RENTAL OR OTHER CONDITIONS, WITHDRAWAL WITHOUT NOTICE, AND TO ANY SPECIAL LISTING CONDITIONS IMPOSED BY THE PROPERTY OWNER(S). ANY PROJECTIONS, OPINIONS OR ESTIMATES ARE SUBJECT TO UNCERTAINTY AND DO NOT SIGNIFY CURRENT OR FUTURE PROPERTY PERFORMANCE.

2nd Floor

SUITE 205/225 | 4,132 RSF (DIVISIBLE TO 1,500 SF)

Features 6 offices, conference room, kitchen and storage. Available 9/1/26



JOHN HARTY

+1 949 372 4910

john.harty@cushwake.com

Lic. #01121203

JASON WARD

+1 949 955 7640

jason.ward@cushwake.com

Lic. #01802243

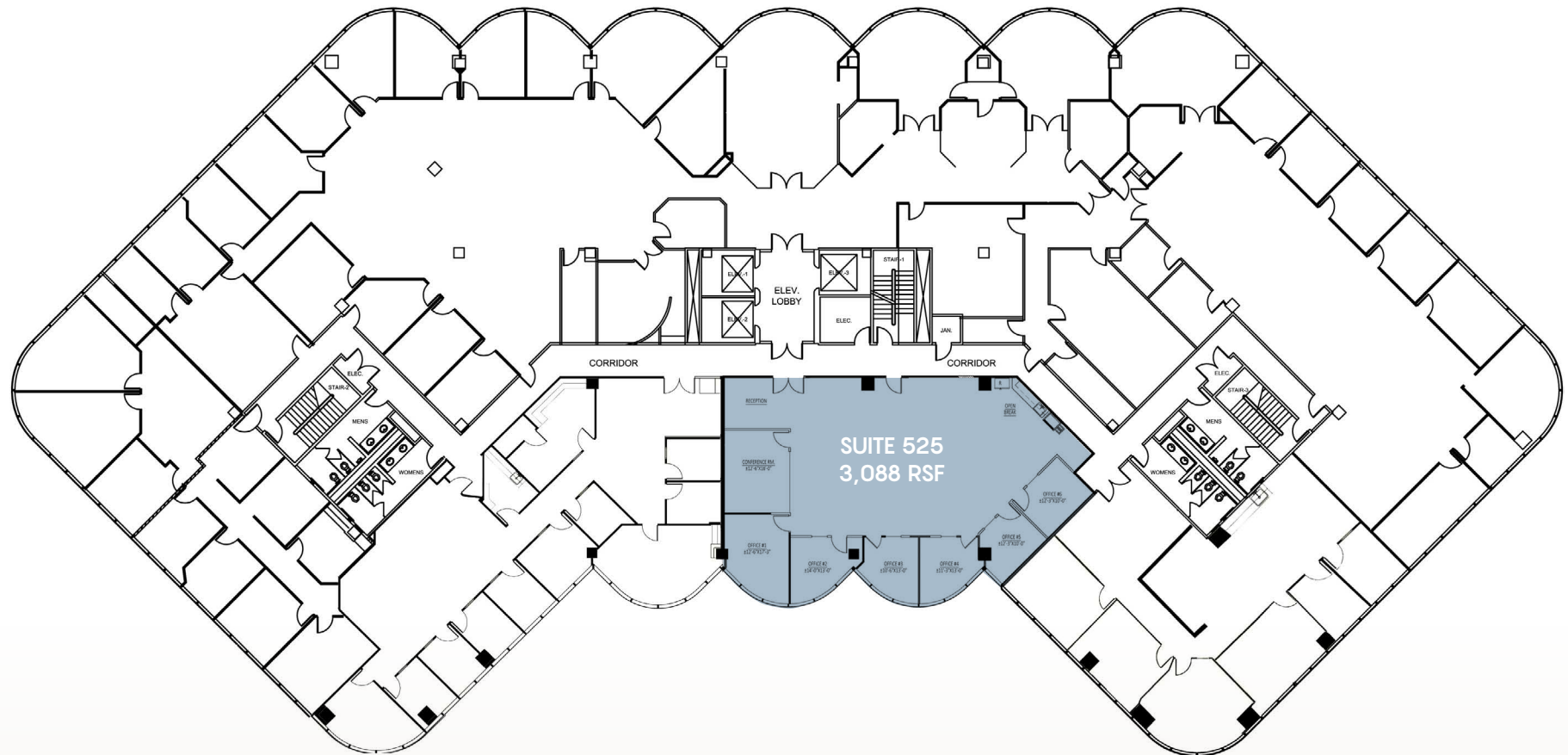


©2025 Cushman & Wakefield. All rights reserved. The information contained in this communication is strictly confidential. This information has been obtained from sources believed to be reliable but has not been verified. NO WARRANTY OR REPRESENTATION, EXPRESS OR IMPLIED, IS MADE AS TO THE CONDITION OF THE PROPERTY (OR PROPERTIES) REFERENCED HEREIN OR AS TO THE ACCURACY OR COMPLETENESS OF THE INFORMATION CONTAINED HEREIN, AND SAME IS SUBMITTED SUBJECT TO ERRORS, OMISSIONS, CHANGE OF PRICE, RENTAL OR OTHER CONDITIONS, WITHDRAWAL WITHOUT NOTICE, AND TO ANY SPECIAL LISTING CONDITIONS IMPOSED BY THE PROPERTY OWNER(S). ANY PROJECTIONS, OPINIONS OR ESTIMATES ARE SUBJECT TO UNCERTAINTY AND DO NOT SIGNIFY CURRENT OR FUTURE PROPERTY PERFORMANCE.

5th Floor

SUITE 525 | 3,088 RSF

Features 6 private offices, conference room, and open kitchen



JOHN HARTY

+1 949 372 4910

john.harty@cushwake.com

Lic. #01121203

JASON WARD

+1 949 955 7640

jason.ward@cushwake.com

Lic. #01802243



©2025 Cushman & Wakefield. All rights reserved. The information contained in this communication is strictly confidential. This information has been obtained from sources believed to be reliable but has not been verified. NO WARRANTY OR REPRESENTATION, EXPRESS OR IMPLIED, IS MADE AS TO THE CONDITION OF THE PROPERTY (OR PROPERTIES) REFERENCED HEREIN OR AS TO THE ACCURACY OR COMPLETENESS OF THE INFORMATION CONTAINED HEREIN, AND SAME IS SUBMITTED SUBJECT TO ERRORS, OMISSIONS, CHANGE OF PRICE, RENTAL OR OTHER CONDITIONS, WITHDRAWAL WITHOUT NOTICE, AND TO ANY SPECIAL LISTING CONDITIONS IMPOSED BY THE PROPERTY OWNER(S). ANY PROJECTIONS, OPINIONS OR ESTIMATES ARE SUBJECT TO UNCERTAINTY AND DO NOT SIGNIFY CURRENT OR FUTURE PROPERTY PERFORMANCE.

6th Floor

SUITE 600 | 4,313 RSF

NEW SPEC SUITE! Features 6 private offices, 2 conference rooms, and open break room

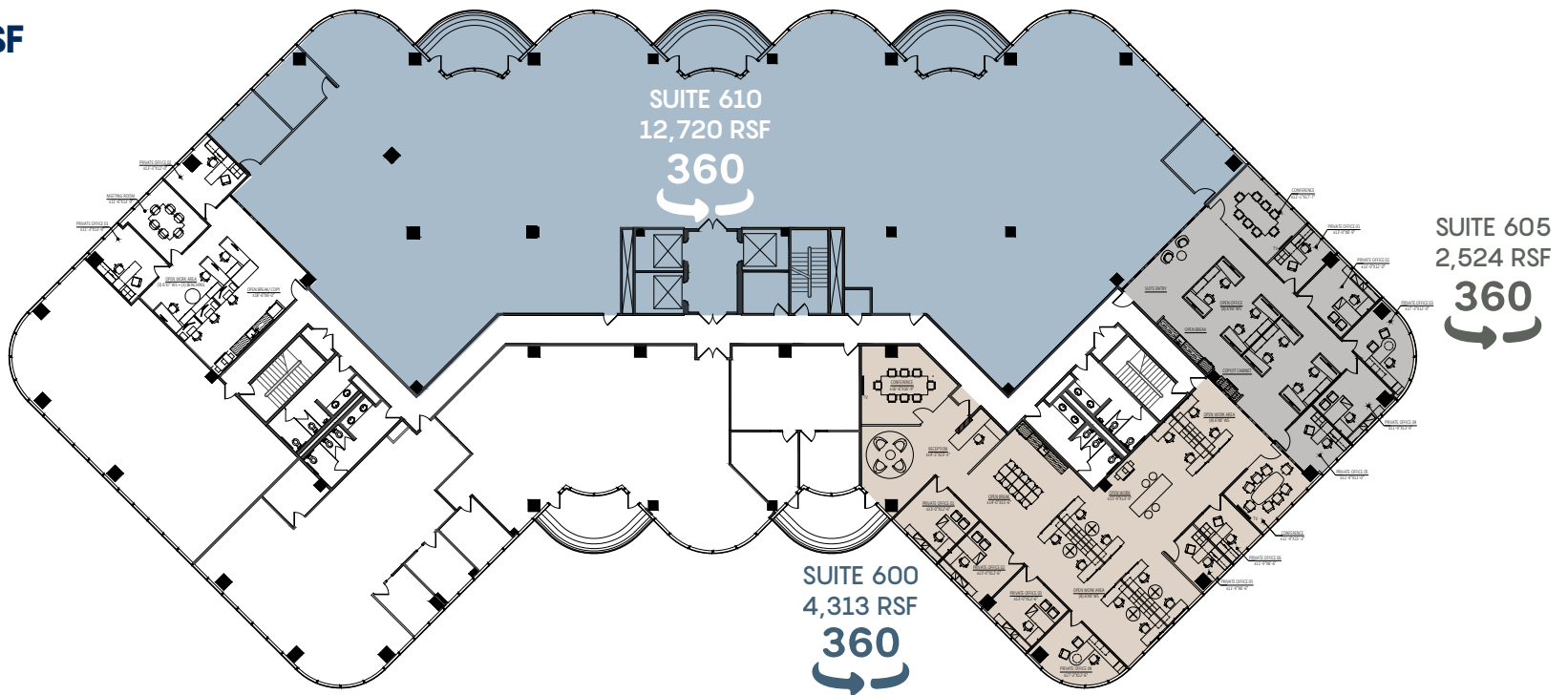
SUITE 605 | 2,524 RSF

NEW SPEC SUITE! Features 5 private offices, conference room, and open break room

SUITE 610 | 12,720 RSF

Features 3 private offices, balconies, and open area

TOTAL: 19,557 RSF



JOHN HARTY

+1 949 372 4910

john.harty@cushwake.com

Lic. #01121203

JASON WARD

+1 949 955 7640

jason.ward@cushwake.com

Lic. #01802243



©2025 Cushman & Wakefield. All rights reserved. The information contained in this communication is strictly confidential. This information has been obtained from sources believed to be reliable but has not been verified. NO WARRANTY OR REPRESENTATION, EXPRESS OR IMPLIED, IS MADE AS TO THE CONDITION OF THE PROPERTY (OR PROPERTIES) REFERENCED HEREIN OR AS TO THE ACCURACY OR COMPLETENESS OF THE INFORMATION CONTAINED HEREIN, AND SAME IS SUBMITTED SUBJECT TO ERRORS, OMISSIONS, CHANGE OF PRICE, RENTAL OR OTHER CONDITIONS, WITHDRAWAL WITHOUT NOTICE, AND TO ANY SPECIAL LISTING CONDITIONS IMPOSED BY THE PROPERTY OWNER(S). ANY PROJECTIONS, OPINIONS OR ESTIMATES ARE SUBJECT TO UNCERTAINTY AND DO NOT SIGNIFY CURRENT OR FUTURE PROPERTY PERFORMANCE.