



CUSHMAN &
WAKEFIELD



FOR LEASE OR FOR SALE

8719 MISSISSIPPI STREET

MERRILLVILLE, INDIANA

289,080 SF (Divisible)
New Construction

PROPERTY HIGHLIGHTS

**Occupancy**

Immediate

**Available**

289,080 SF (Divisible)

**Spec Office**

2,570 SF

**Column Spacing**

52'x46'

**Clear Height**

32'

**Exterior Docks**

30 (Expandable to 65)

**Drive-In Doors**

2

**Trailer Stalls**

58

**Car Stalls**

239

**Power**

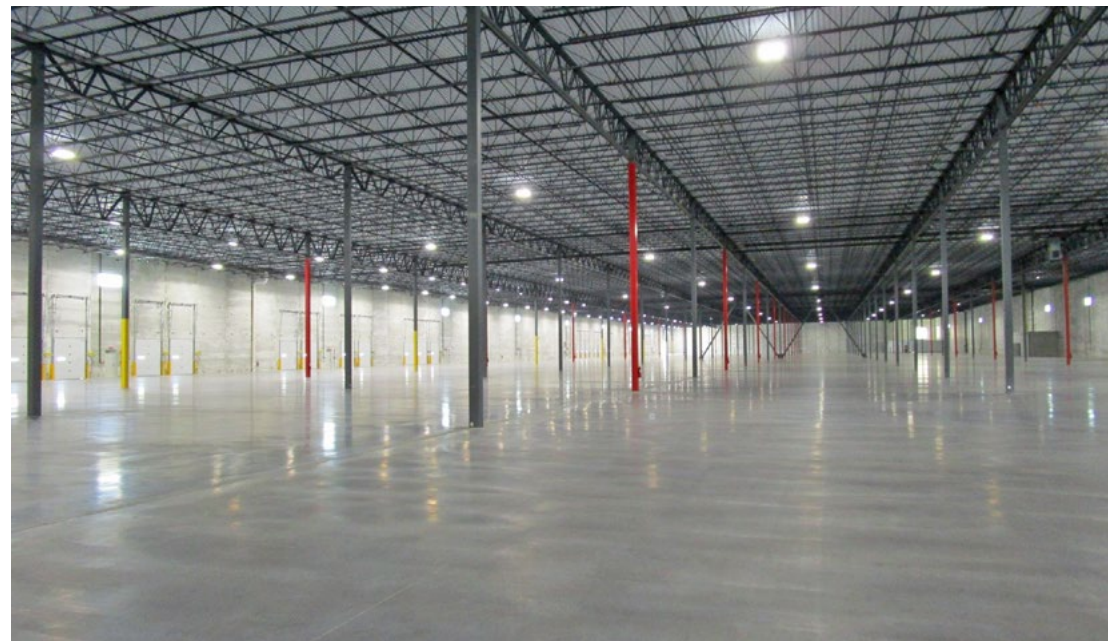
2,400 Amps

**Incentives**

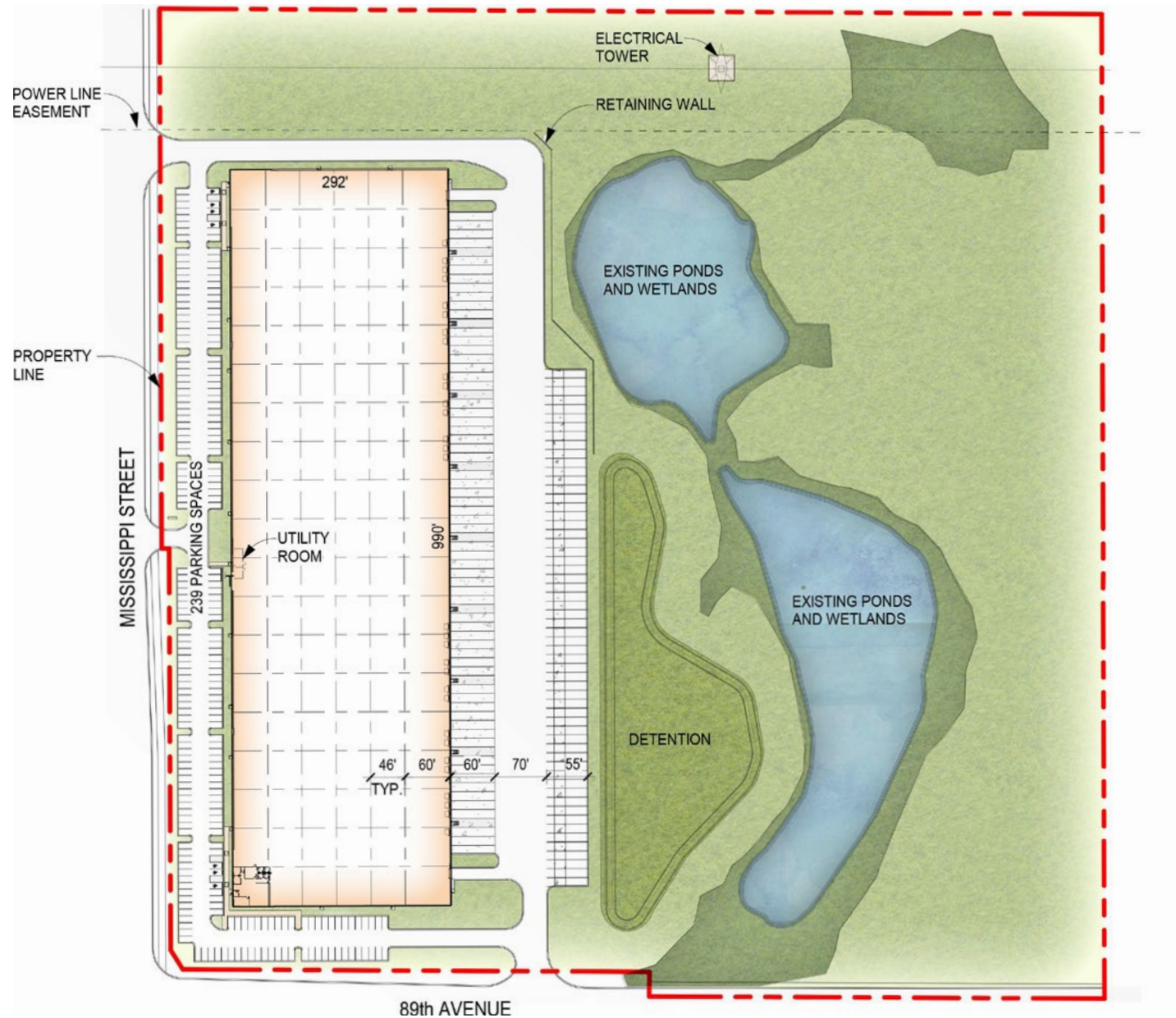
New tenants eligible for a real estate tax abatement

**Lease Rate |
Sale Price**

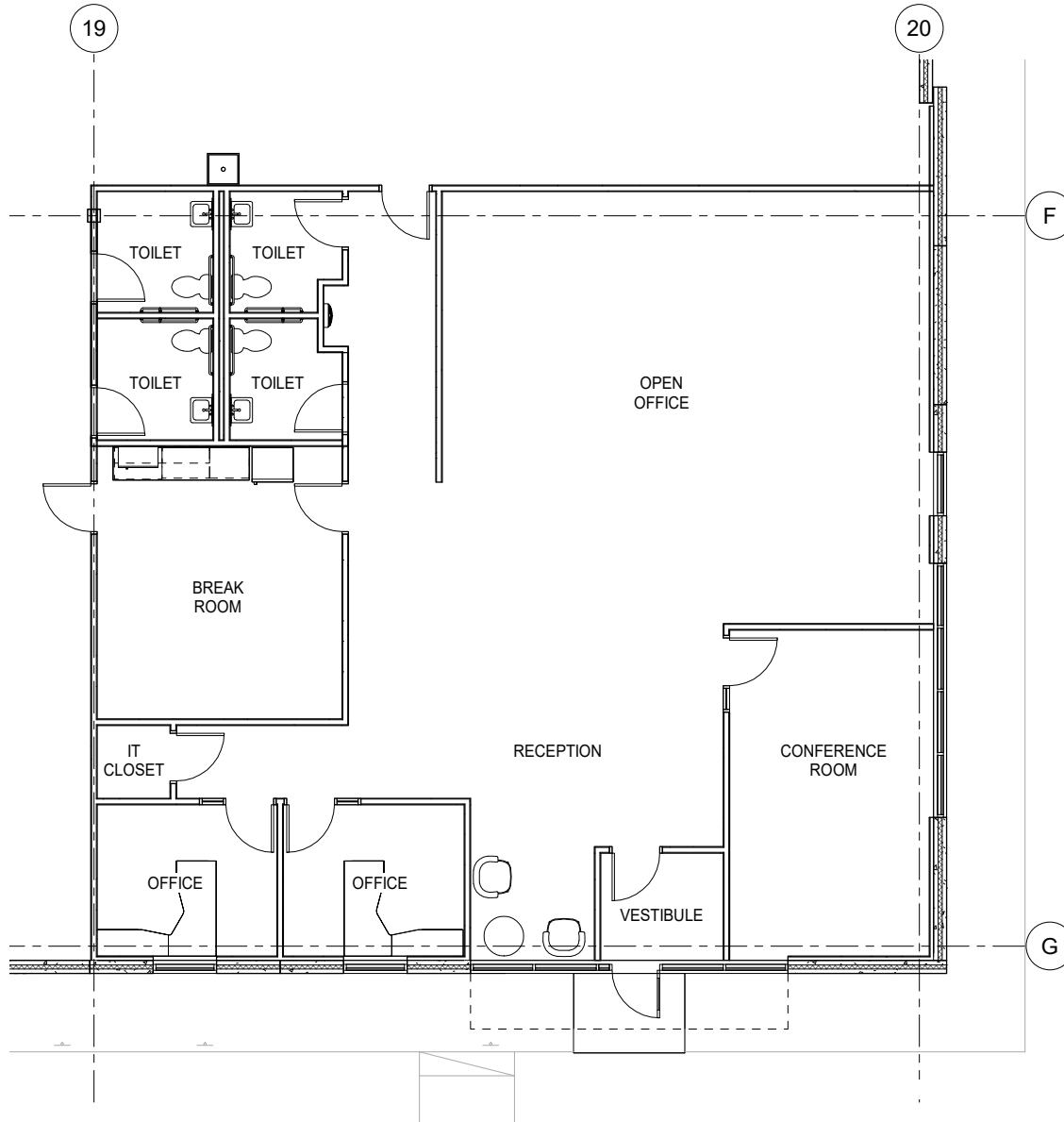
Subject to Offer



SITE PLAN



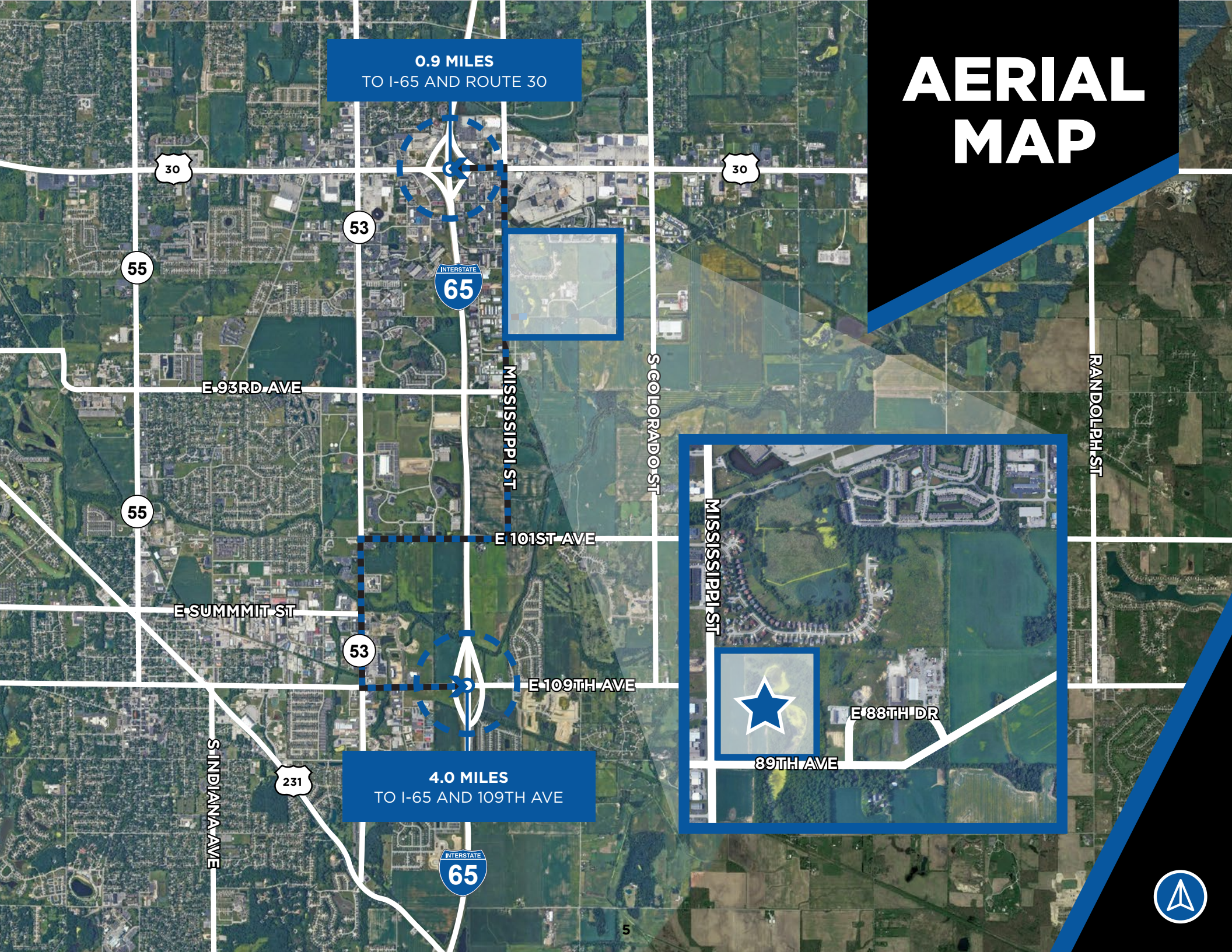
SPEC OFFICE FLOOR PLAN

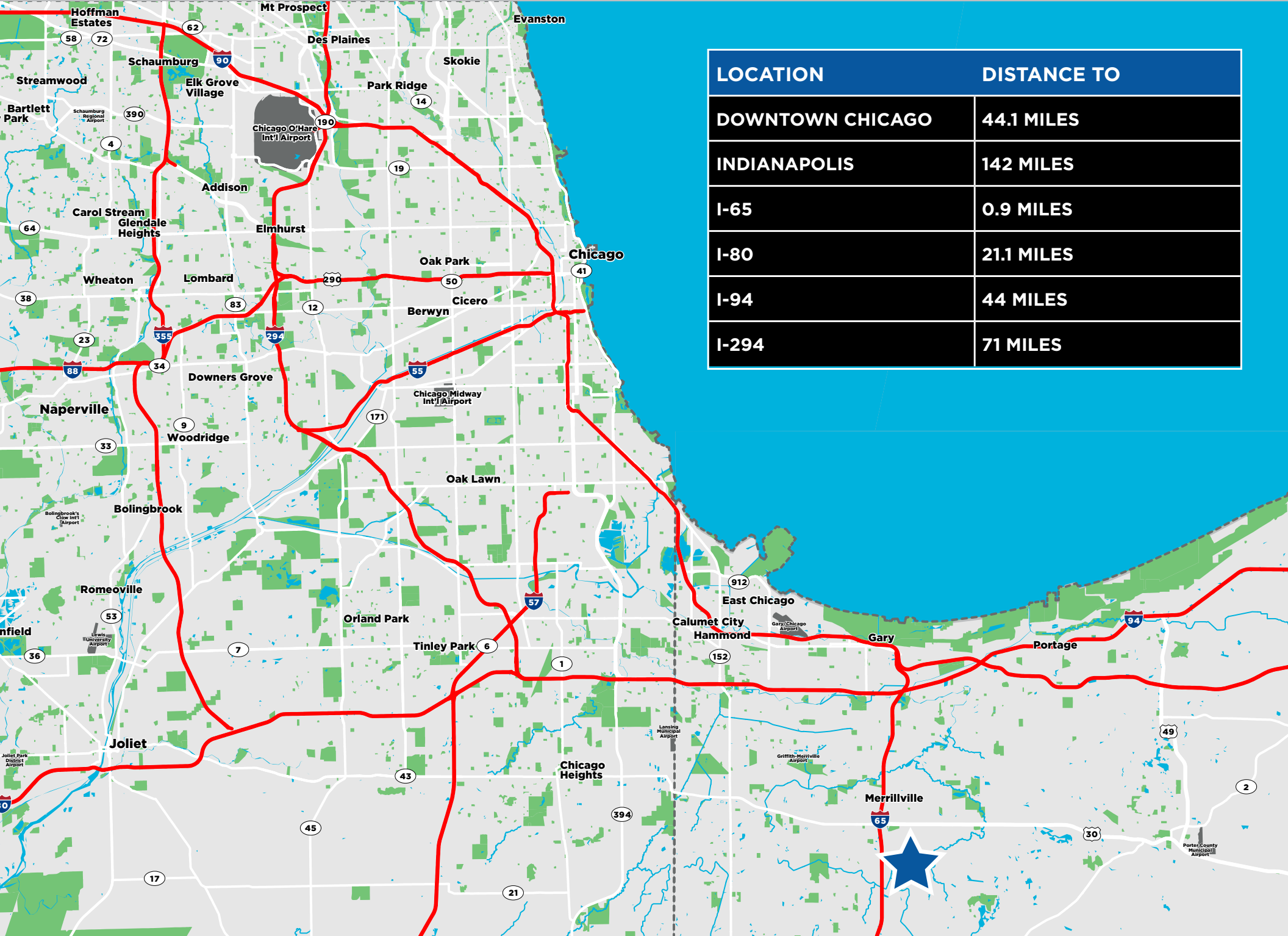


AERIAL MAP

0.9 MILES
TO I-65 AND ROUTE 30

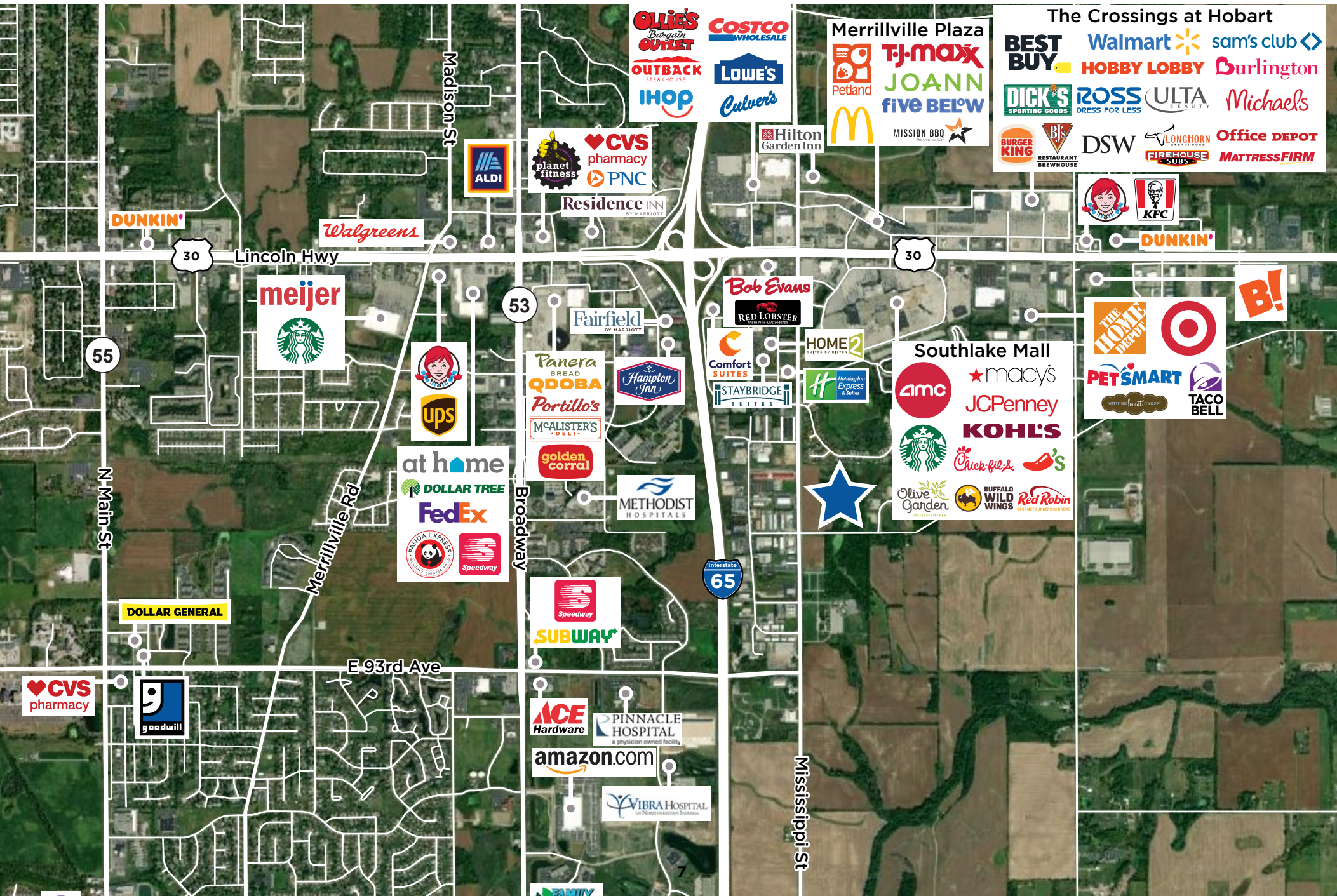
4.0 MILES
TO I-65 AND 109TH AVE





LOCATION		DISTANCE TO	
DOWNTOWN CHICAGO		44.1 MILES	
INDIANAPOLIS		142 MILES	
I-65		0.9 MILES	
I-80		21.1 MILES	
I-94		44 MILES	
I-294		71 MILES	

NEIGHBORING TENANTS



FOR LEASE OR FOR SALE | 289,080 SF (DIVISIBLE)

8719 MISSISSIPPI STREET, MERRILLVILLE, INDIANA



RYAN KLINK
Managing Director
+1 847 518 3211
ryan.klink@cushwake.com

JASON WEST, SIOR
Executive Vice Chair
+1 847 518 3210
jason.west@cushwake.com

SEAN HENRICK, SIOR
Vice Chair
+1 847 518 3215
sean.henrick@cushwake.com

CONNOR NIEGO
Associate
+1 708 870 1531
connor.niego@cushwake.com

©2025 Cushman & Wakefield. All rights reserved. The information contained in this communication is strictly confidential. This information has been obtained from sources believed to be reliable but has not been verified. NO WARRANTY OR REPRESENTATION, EXPRESS OR IMPLIED, IS MADE AS TO THE CONDITION OF THE PROPERTY (OR PROPERTIES) REFERENCED HEREIN OR AS TO THE ACCURACY OR COMPLETENESS OF THE INFORMATION CONTAINED HEREIN, AND SAME IS SUBMITTED SUBJECT TO ERRORS, OMISSIONS, CHANGE OF PRICE, RENTAL OR OTHER CONDITIONS, WITHDRAWAL WITHOUT NOTICE, AND TO ANY SPECIAL LISTING CONDITIONS IMPOSED BY THE PROPERTY OWNER(S). ANY PROJECTIONS, OPINIONS OR ESTIMATES ARE SUBJECT TO UNCERTAINTY AND DO NOT SIGNIFY CURRENT OR FUTURE PROPERTY PERFORMANCE.

