



# 19450

## TEXAS HIGHWAY 249

FOR SUBLEASE

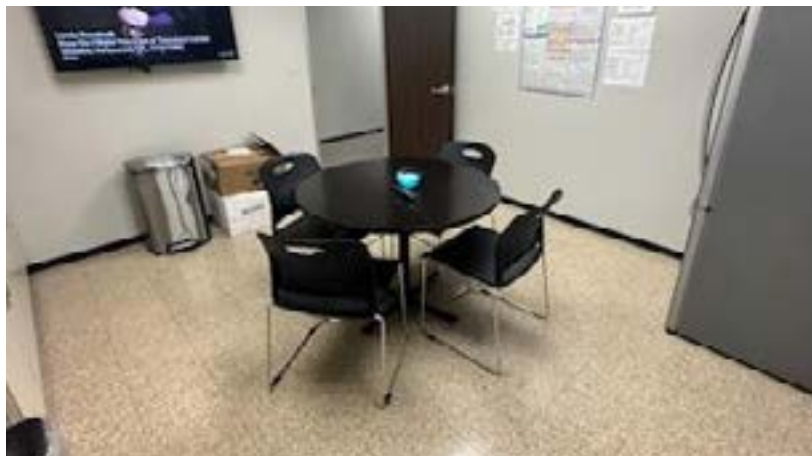
HOUSTON, TX 77070





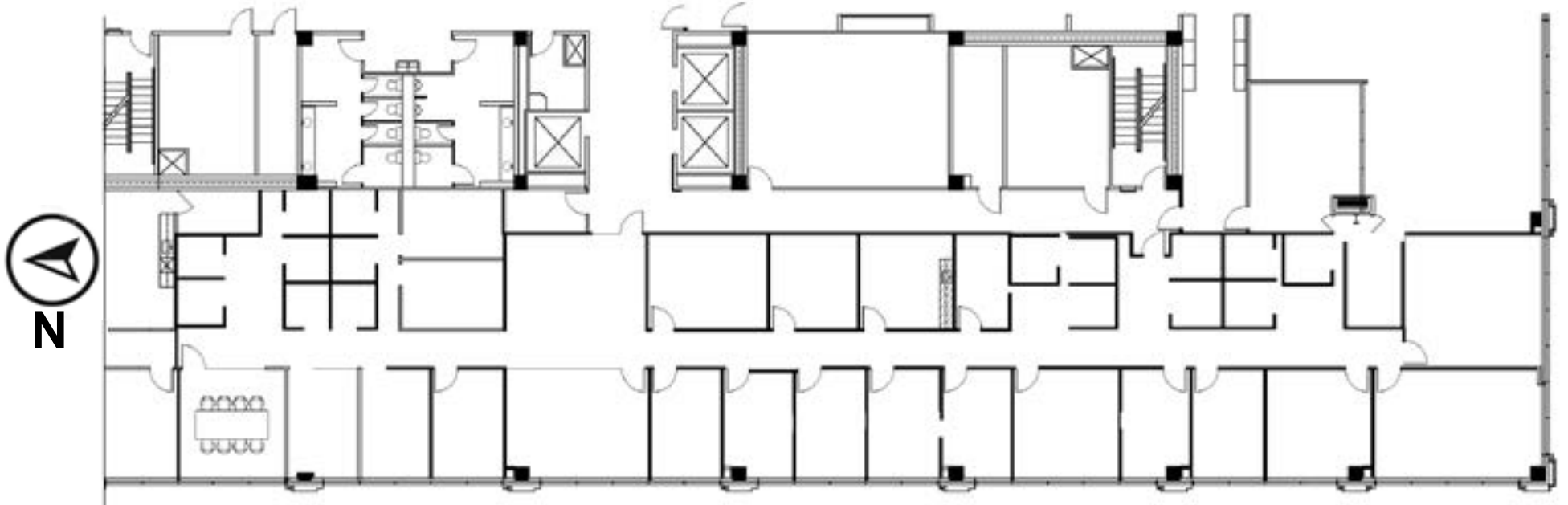
# Property Highlights

PROPERTY	
Space:	Suite 450 (7,964 RSF)
Sublease Term:	March 31, 2027
Rate:	Negotiable
OPEX:	\$11.51/RSF (2025 estimate by Landlord)
Parking:	3.5/1,000
Furniture:	Negotiable
Availability:	Immediate
Amenities:	<ul style="list-style-type: none"><li>• Close proximity to Vintage Park</li><li>• Ample dining options nearby</li></ul>



# Property Photos





# Floor Plan

HOUSTON, TX 77070



# 19450

# Texas Highway 249

HOUSTON, TX 77070

7,964 RSF

**Cooper Bagheri**

**Director**

cooper.bagheri@cushwake.com  
+1 713-331-1805

**Tim D. Relyea**

**Executive Vice Chairman**

tim.relyea@cushwake.com  
+1 713 877 8752

1330 Post Oak Blvd #2700,  
Houston, TX 77056  
**cushmanwakefield.com**



©2025 Cushman & Wakefield. All rights reserved. The information contained in this communication is strictly confidential. This information has been obtained from sources believed to be reliable but has not been verified. NO WARRANTY OR REPRESENTATION, EXPRESS OR IMPLIED, IS MADE AS TO THE CONDITION OF THE PROPERTY (OR PROPERTIES) REFERENCED HEREIN OR AS TO THE ACCURACY OR COMPLETENESS OF THE INFORMATION CONTAINED HEREIN, AND SAME IS SUBMITTED SUBJECT TO ERRORS, OMISSIONS, CHANGE OF PRICE, RENTAL OR OTHER CONDITIONS, WITHDRAWAL WITHOUT NOTICE, AND TO ANY SPECIAL LISTING CONDITIONS IMPOSED BY THE PROPERTY OWNER(S). ANY PROJECTIONS, OPINIONS OR ESTIMATES ARE SUBJECT TO UNCERTAINTY AND DO NOT SIGNIFY CURRENT OR FUTURE PROPERTY PERFORMANCE.