

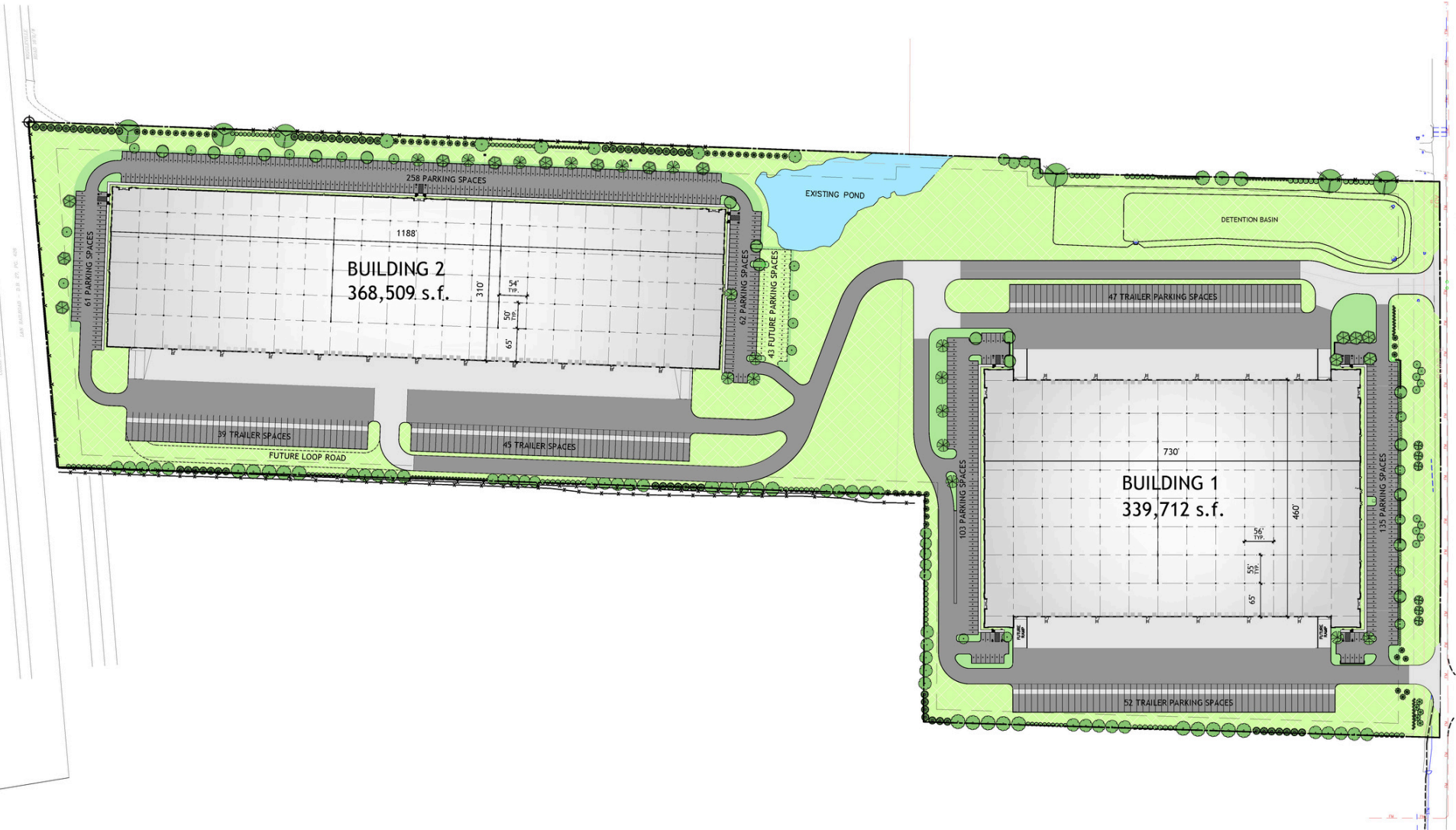


SOUTH LOUISVILLE ⁶⁵ LOGISTICS CENTER

FOR LEASE
UP TO 708,221 SF
1004 EAST BLUE LICK ROAD
SHEPHERDSVILLE, KY 40165

 **CUSHMAN &
WAKEFIELD**
Commercial Kentucky

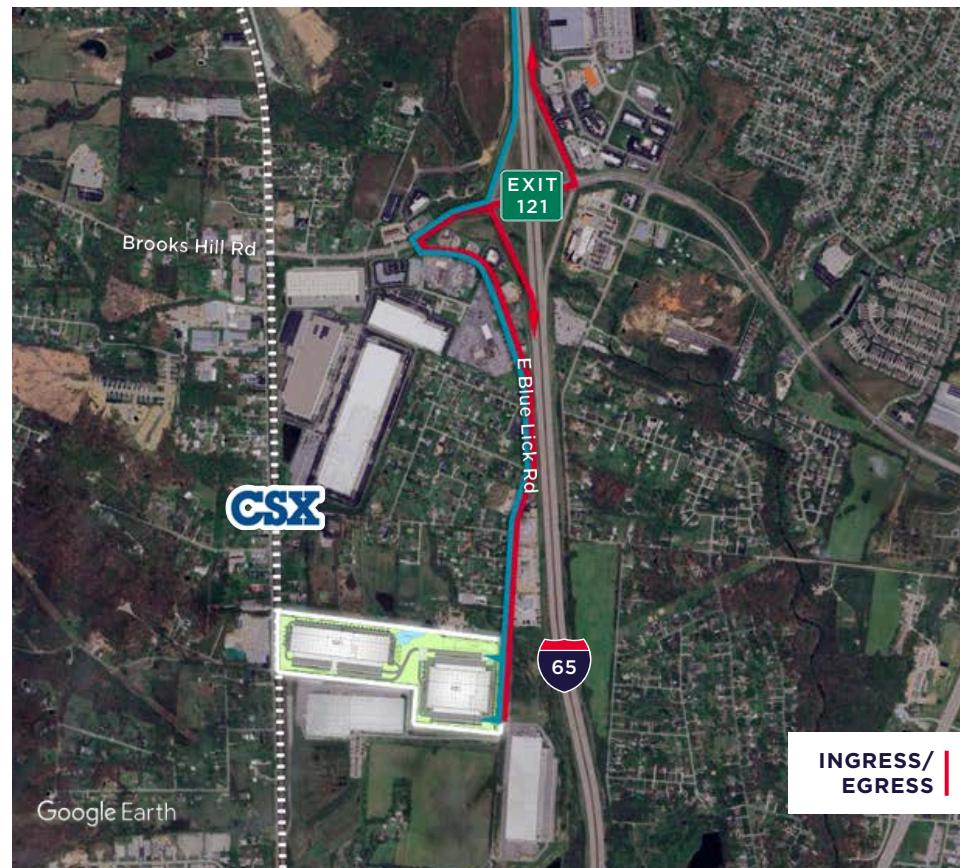
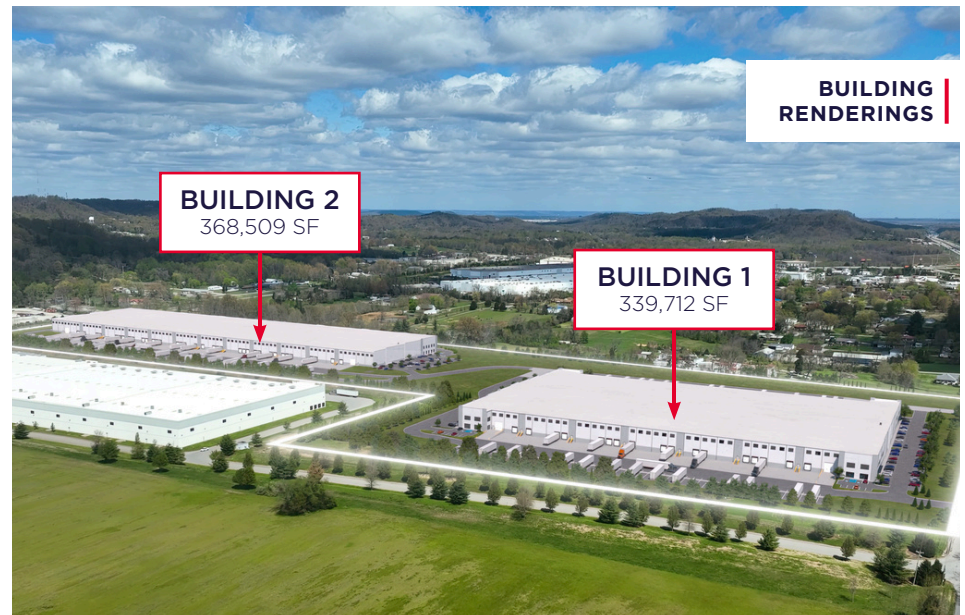
 **JOHNSON
DEVELOPMENT
ASSOCIATES, INC.**
Part of The Johnson Group



SITE
PLAN

PROPERTY HIGHLIGHTS

	Building I	Building II
Building Size:	339,712 sf	368,509 sf
Loading Type:	Cross-dock	Rear-load
Office Area:	Build-to-suit	Build-to-suit
Clear Height:	36'	36'
Docks:	34 installed (9' x 10') 34 knockouts	36 installed (9' x 10') 27 knockouts
Drive-In Doors:	2 (14' x 16') 2 knockouts	2 (14' x 16')
Speed Bays:	56' x 65'	54' x 65'
Interior Bays:	56' x 55'	54' x 50'
Power:	Build-to-suit Heavy power available	Build-to-suit Heavy power available
Lighting:	LED	LED
Sprinklers:	ESFR	ESFR
Car Parking:	238 spaces	381 spaces 43 future spaces
Trailer Parking:	99 stalls	84 stalls
Rail Access:	No	Yes (CSX)



LOCATION & DEMOGRAPHICS

South Louisville 65 Logistics Center is located in Shepherdsville, KY, just 10 miles from the UPS Worldport and Louisville International Airport. This prime location provides employers access to the strong demographic profile of the Louisville MSA while being in a proven location minutes from the South/Airport submarket.

DEMOGRAPHIC STATISTICS



66,637
POPULATION
Within 5 Miles

273,264
POPULATION
Within 10 Miles

645,895
POPULATION
Within 15 Miles



\$84,034
AVG. HH INCOME
Within 5 Miles

\$80,784
AVG. HH INCOME
Within 10 Miles

\$83,169
AVG. HH INCOME
Within 15 Miles



25,940
HOUSEHOLDS
Within 5 Miles

116,883
HOUSEHOLDS
Within 10 Miles

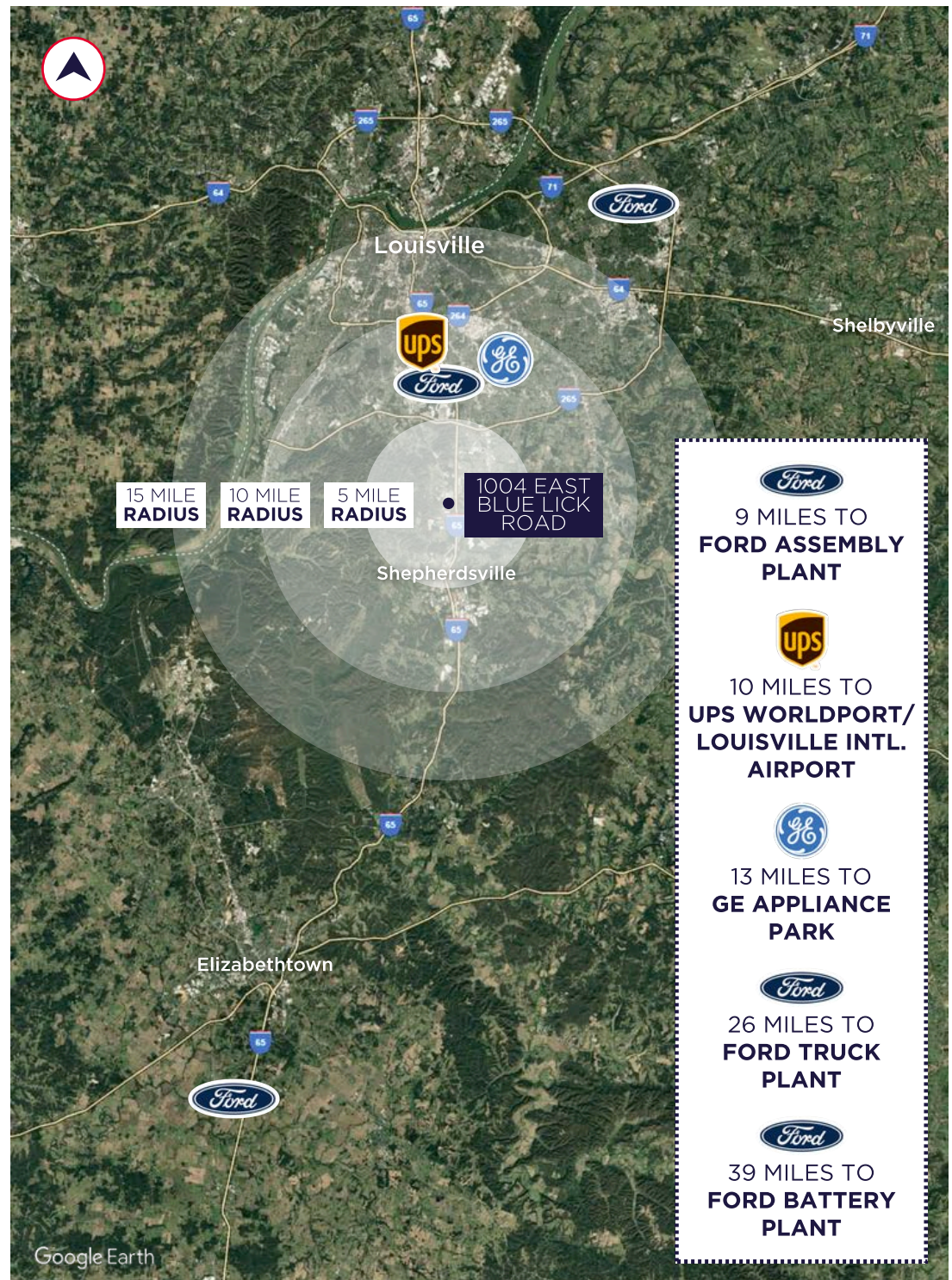
285,439
HOUSEHOLDS
Within 15 Miles



40
MEDIAN AGE
Within 5 Miles

39
MEDIAN AGE
Within 10 Miles

39
MEDIAN AGE
Within 15 Miles



WITHIN 3 HOURS OF

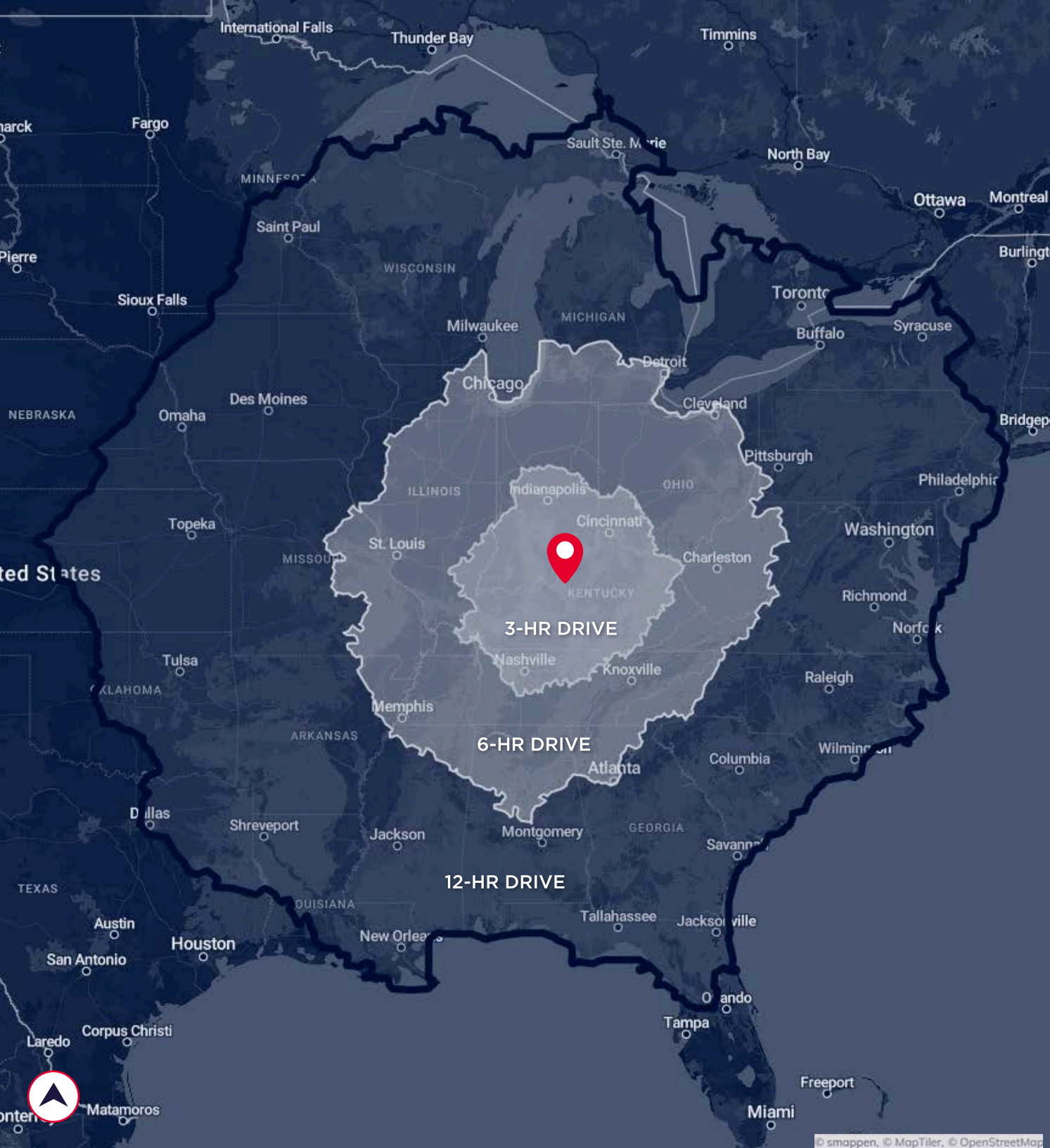
NASHVILLE, TN
CINCINNATI, OH
INDIANAPOLIS, IN
POPULATION: ~12.3M

WITHIN 6 HOURS OF

CHICAGO, IL
ATLANTA, GA
DETROIT, MI
CLEVELAND, OH
ST. LOUIS, MO
MEMPHIS, TN
POPULATION: ~58.4M

WITHIN 12 HOURS OF

NEW YORK CITY, NY
DALLAS-FORT WORTH, TX
PHILADELPHIA, PA
WASHINGTON D.C.
MINNEAPOLIS, MN
TORONTO, ON
SAVANNAH, GA
JACKSONVILLE, FL
MOBILE, AL
CHARLESTON, SC
NORFOLK, VA
POPULATION: ~201.4M



CONTACT INFORMATION

ROBERT WALKER, SIOR, CCIM

Senior Director

rwalker@commercialkentucky.com

+1 502 719 3254

JAKE MILLS, SIOR

Senior Associate

jmills@commercialkentucky.com

+1 502 719 3252



©2025 Cushman & Wakefield. All rights reserved. The information contained in this communication is strictly confidential. This information has been obtained from sources believed to be reliable but has not been verified. NO WARRANTY OR REPRESENTATION, EXPRESS OR IMPLIED, IS MADE AS TO THE CONDITION OF THE PROPERTY (OR PROPERTIES) REFERENCED HEREIN OR AS TO THE ACCURACY OR COMPLETENESS OF THE INFORMATION CONTAINED HEREIN, AND SAME IS SUBMITTED SUBJECT TO ERRORS, OMISSIONS, CHANGE OF PRICE, RENTAL OR OTHER CONDITIONS, WITHDRAWAL WITHOUT NOTICE, AND TO ANY SPECIAL LISTING CONDITIONS IMPOSED BY THE PROPERTY OWNER(S). ANY PROJECTIONS, OPINIONS OR ESTIMATES ARE SUBJECT TO UNCERTAINTY AND DO NOT SIGNIFY CURRENT OR FUTURE PROPERTY PERFORMANCE.

Independently Owned & Operated / A Member of the Cushman & Wakefield Alliance