

FOR LEASE
35,601 SQUARE FEET



41995 ZEVO DRIVE
TEMECULA, CA 92590



PROPERTY AVAILABILITY



AVAILABLE
SUITE

Suite B



AVAILABLE
SQUARE FEET

±35,601 SF



OFFICE
SQUARE FEET

±2,571 SF



CLEAR HEIGHT

±28'



LOADING

11 Dock High Doors
1 Grade Level



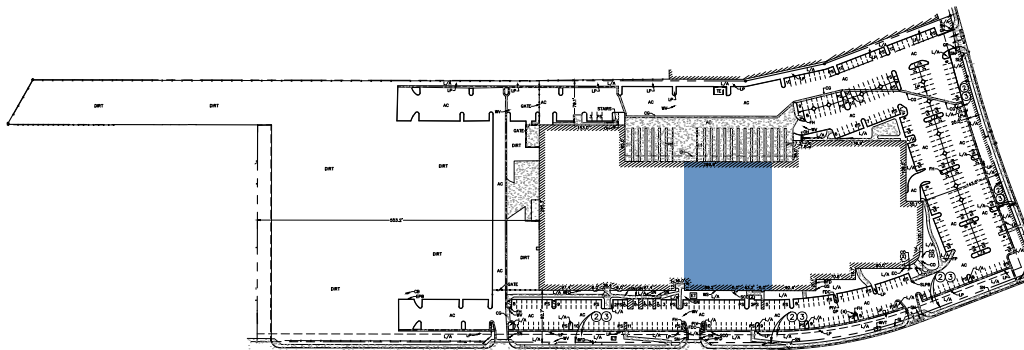
PARKING

2.03/1,000 SF

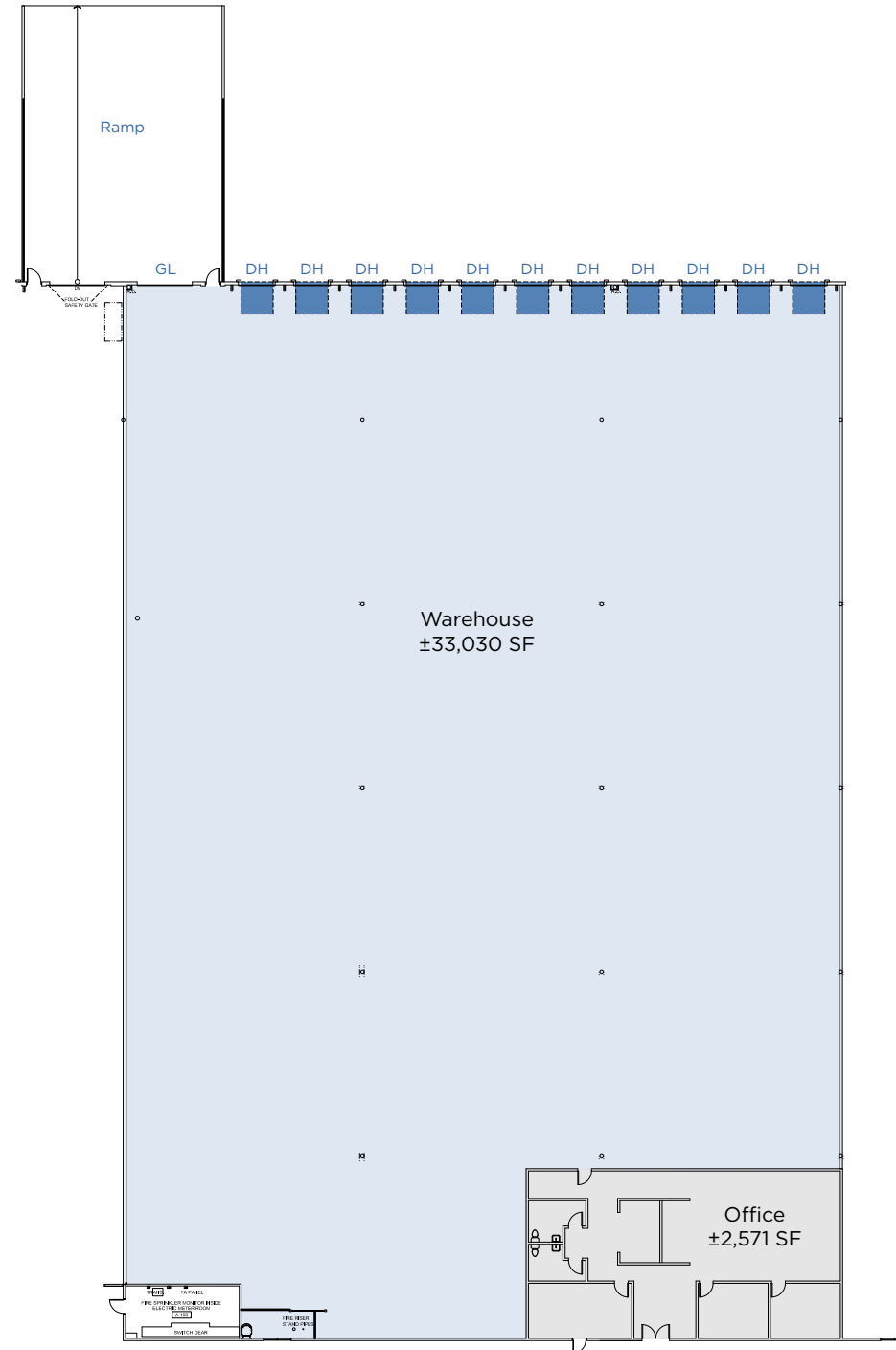


SPRINKLERS

Yes



 = Available Space



PROPERTY HIGHLIGHTS



TOTAL
SQUARE FEET

±227,232 SF



AVAILABLE
SQUARE FEET

±35,601 SF



YEAR BUILT

1998



SITE AREA

±15.11 Acres (± 658,192 SF) including
±5.54 acres of excess land (±241,324 SF)



ZONING

LI (Light Industrial)



CLEAR HEIGHT

±28'



LOADING

21 Dock High Doors / 4 Grade Level



PARKING

2.03/1,000 SF (461 Auto Stalls)



SPRINKLERS

Yes

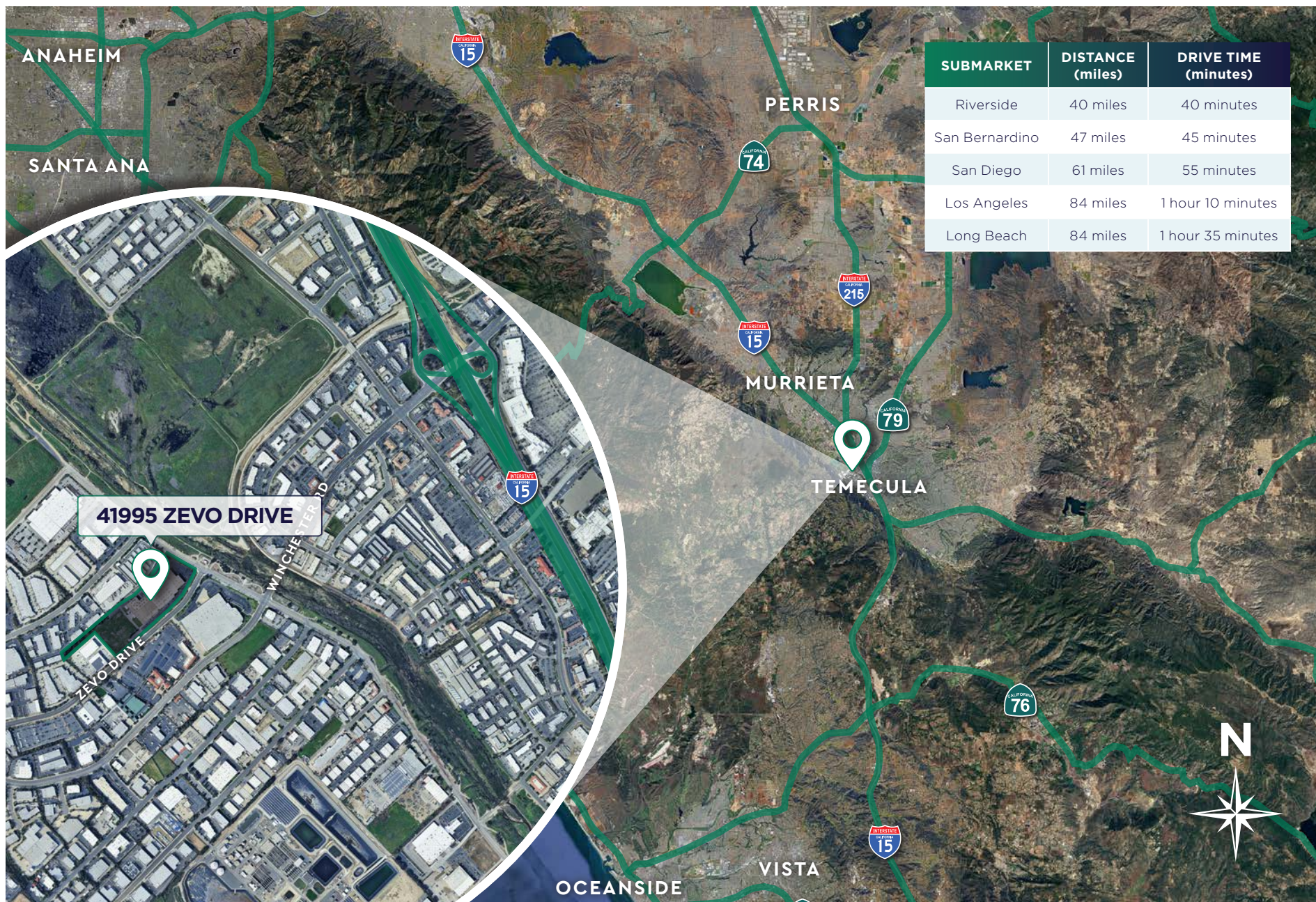


POWER

4,000a/277 - 480v Heavy



PROPERTY LOCATION



CORPORATE NEIGHBORS



PROPERTY PHOTOS



SUITE B
±35,601 SF

CONTACT INFORMATION



BRANT ABERG, SIOR

+1 858 546 5464
brant.aberg@cushwake.com
CA Lic 01773573

SCOTT STEWART

+1 951 445 4514
sstewart@lee-associates.com
CA Lic 01342575

