

# 5985 MAIN STREET

CLASS A OFFICE IN THE HEART OF  
MCCORDSVILLE'S TOWN CENTER

Joshua Graham

Director

+1 317 639 0491

joshua.graham@cushwake.com

Luke Lonneman

Associate

+1 317 352 5419

luke.lonneman@cushwake.com

Jon R. Owens, SIOR

Managing Director

+1 317 639 0447

jon.owens@cushwake.com

McCordsville, IN 46055





# Building Features & Amenities

- Class A, professionally designed three-story office building
- Efficient floorplans with natural light and flexible configurations
- Prominent visibility within McCord Square
- Elevator-served upper floors
- Surface parking available
- Located in the heart of McCordsville's walkable Town Center District
- Total building available SF to 19,655 RSF

## Modern first-floor communal space featuring:

- Signature stadium stair amenity for informal meetings and collaboration
- Lounge seating and café-style tables for a flexible, hospitality-inspired atmosphere





# Property Overview

5985 Main Street offers forward-thinking companies the opportunity to lease contemporary Class A office space in the heart of McCordsville's master-planned Town Center. This dynamic three-story office building is surrounded by new civic amenities, lifestyle services, and residential density—an ideal environment for professionals seeking accessibility, design, and community.

Tenants benefit from beautifully designed interiors, strong local demographics, and a growing economic corridor just minutes from I-70 and the greater Indianapolis metro area.





# McCord Square

## Site Plan

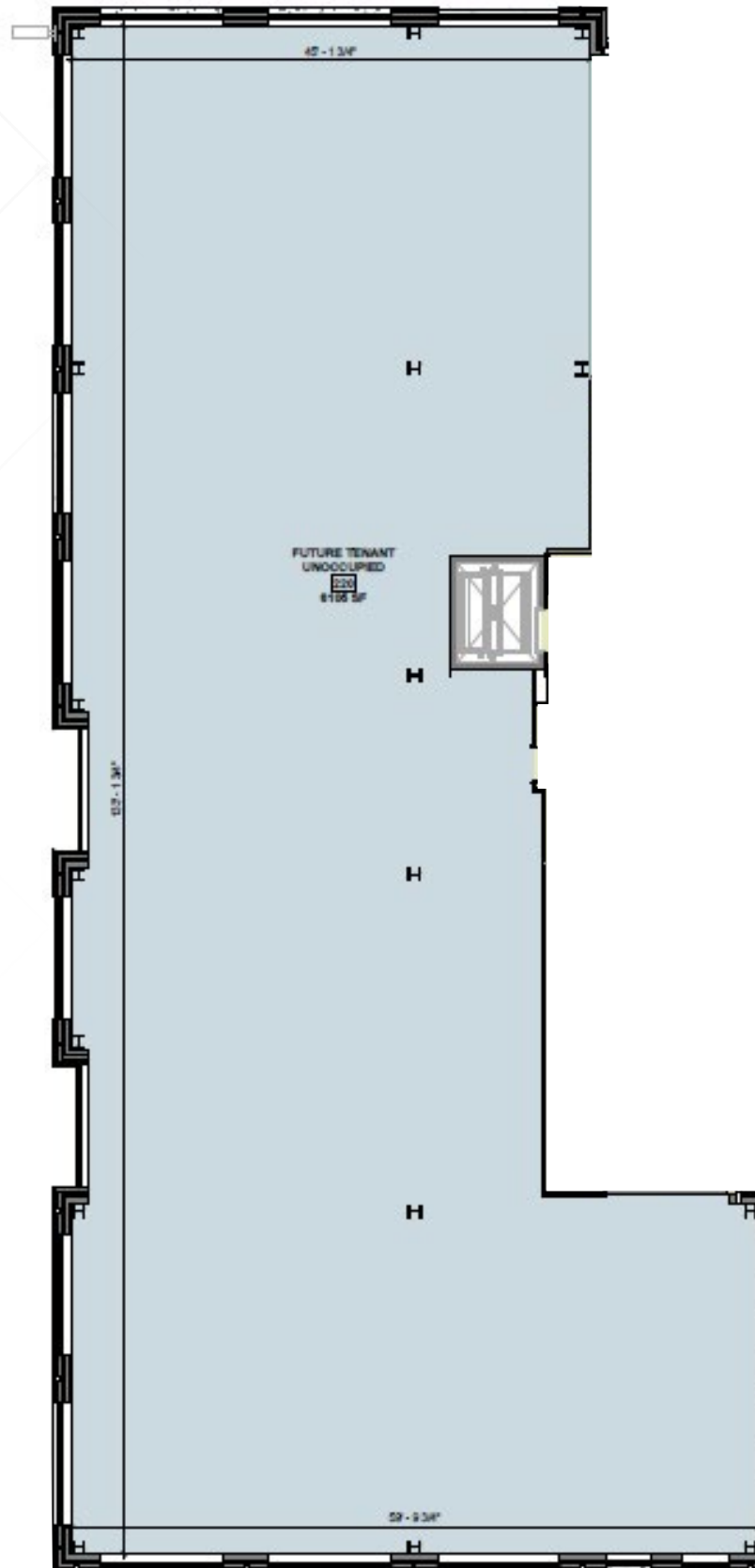




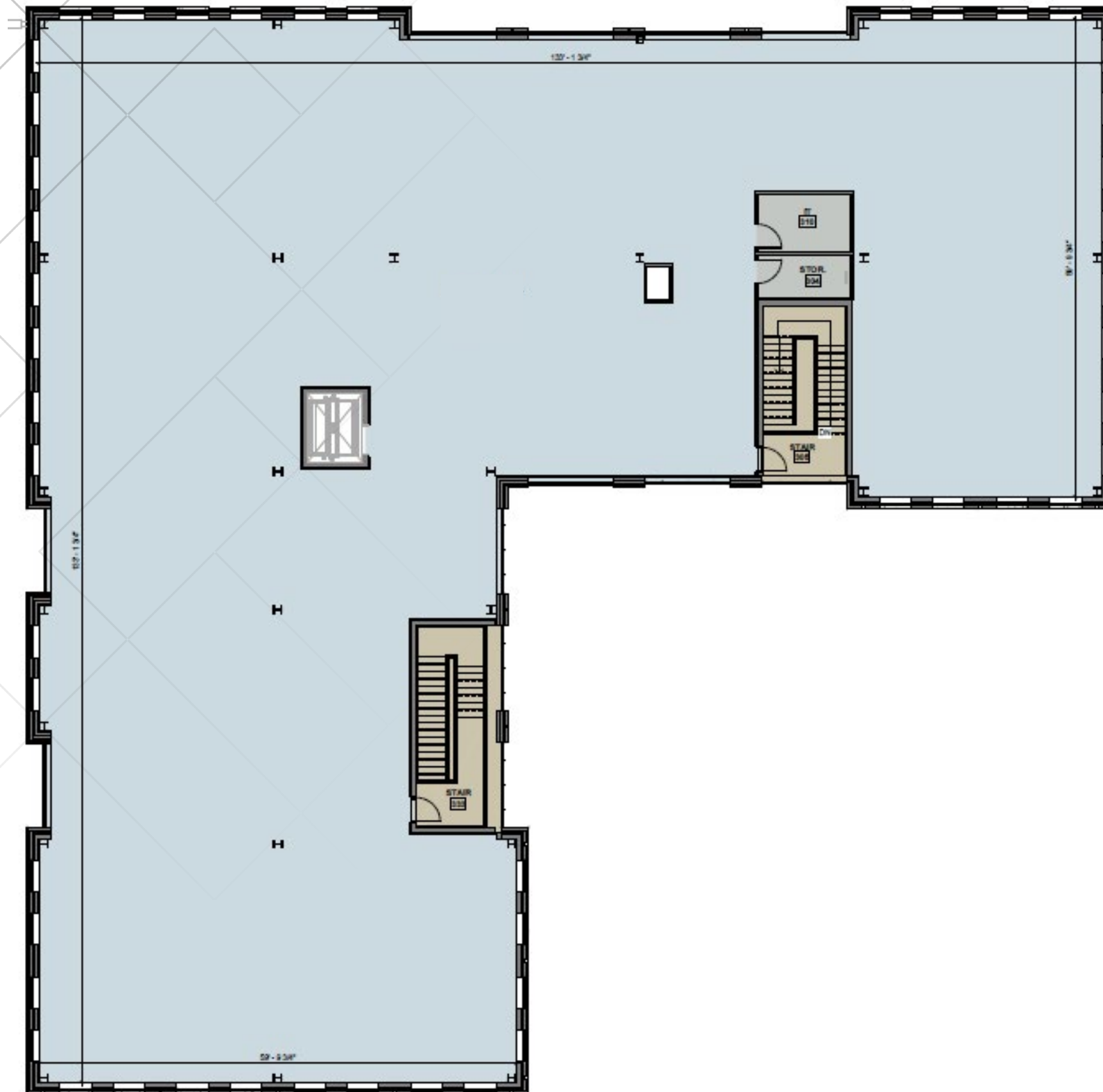
# Floor Plan

## Second Floor

Suite 201 – 7,091 RSF







# Floor Plan

## Third Floor

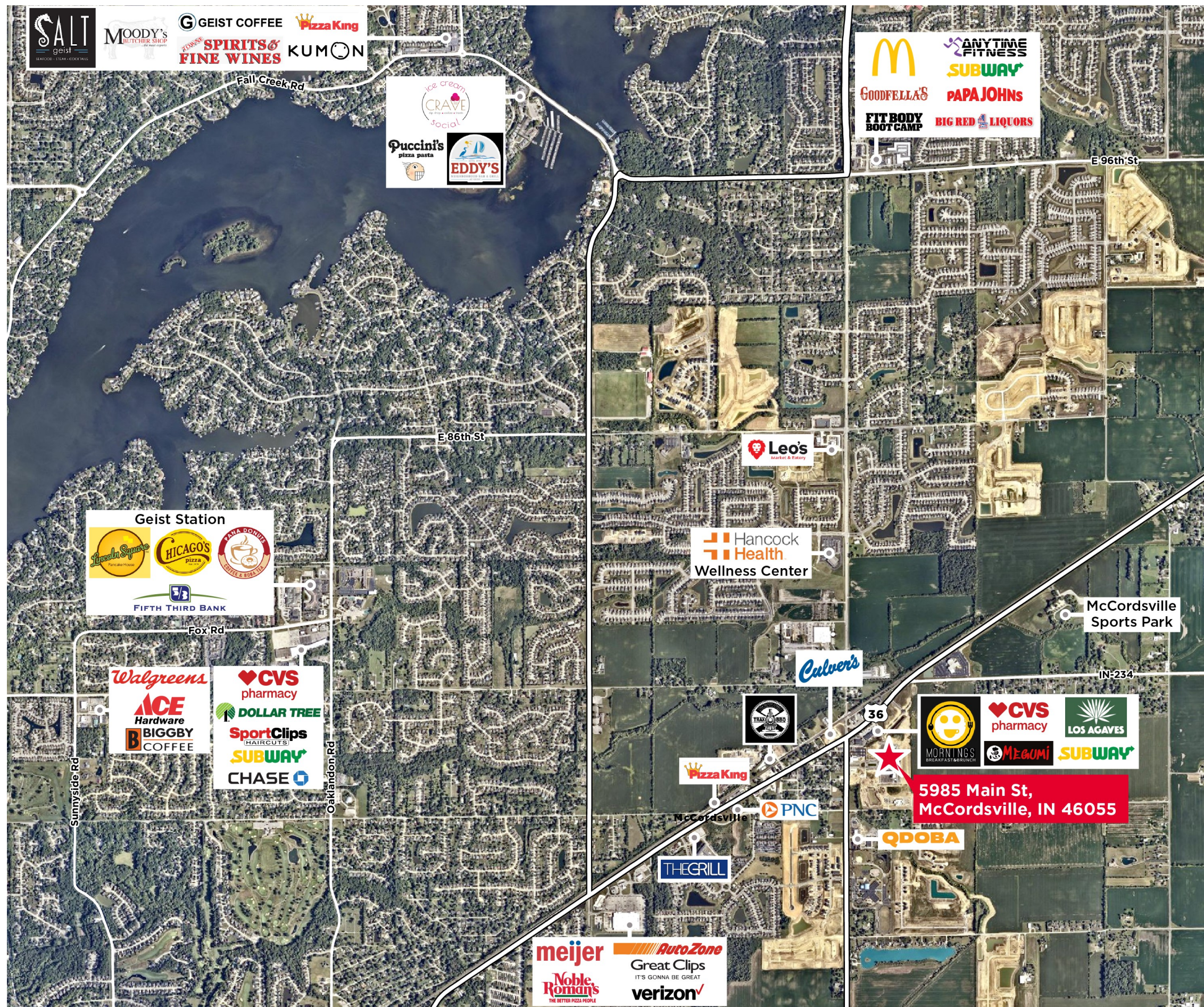
Suite 301 – 12,564 RSF



# Trade Aerial

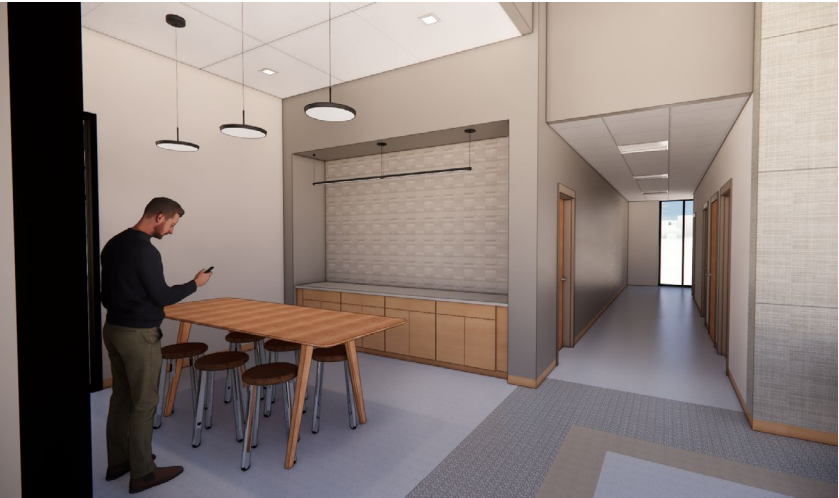
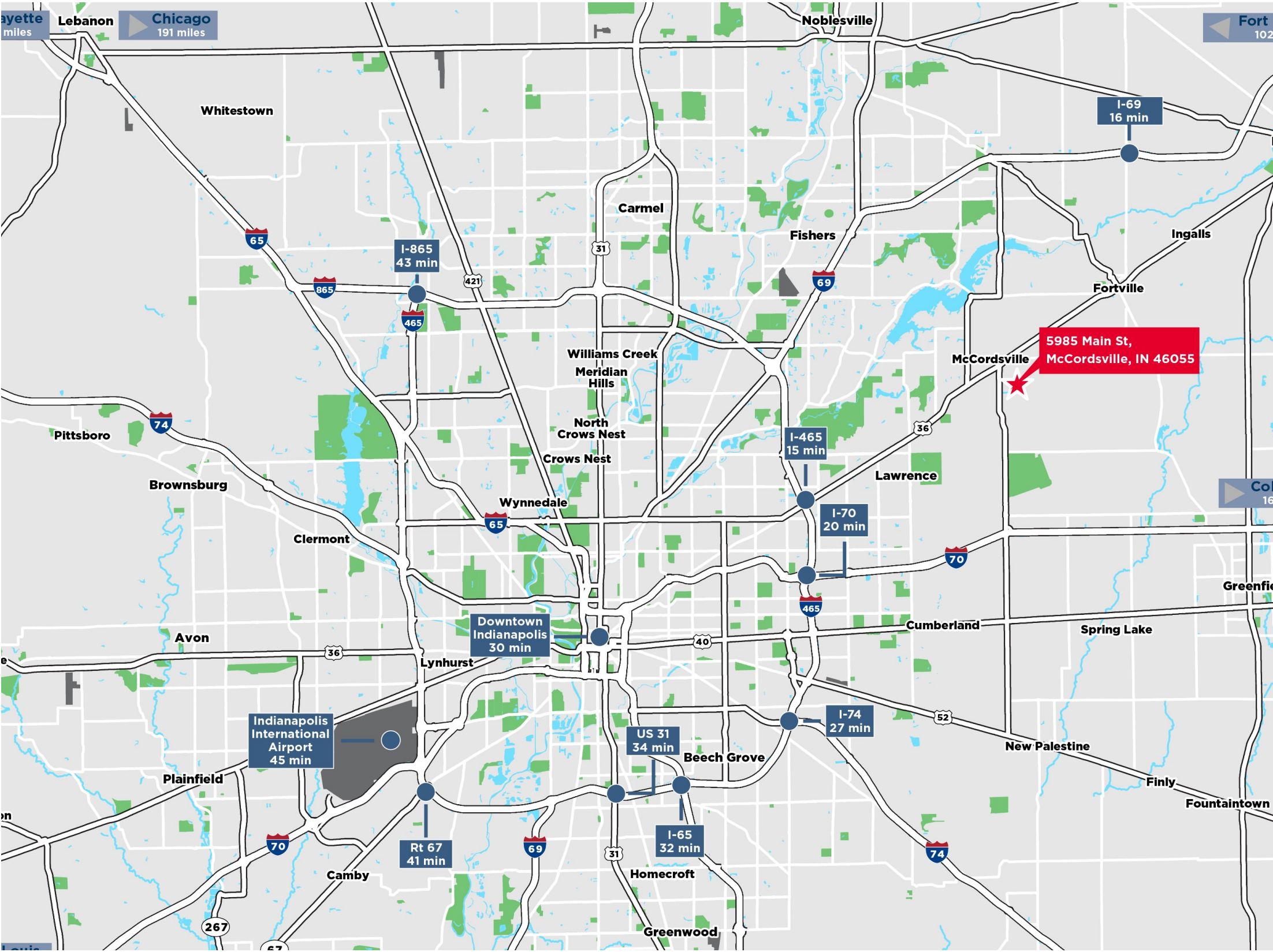
## Location Highlights

- Part of the McCord Square development—a mixed-use district developed in partnership with the Town of McCordsville, Rebar Development, and Pride Invest Partners
- Across from the new Town Hall, Civic Green, and community amenities
- 1 mile from Meijer, CVS, and Hancock Health Wellness Center
- Strategic access to I-70, I-465, and I-69
- Within the high-growth Hancock County corridor
- 156,000+ households within 10 miles
- Average household income: \$98,667





# Drive Times



©2025 Cushman & Wakefield. All rights reserved. The information contained in this communication is strictly confidential. This information has been obtained from sources believed to be reliable but has not been verified. NO WARRANTY OR REPRESENTATION, EXPRESS OR IMPLIED, IS MADE AS TO THE CONDITION OF THE PROPERTY (OR PROPERTIES) REFERENCED HEREIN OR AS TO THE ACCURACY OR COMPLETENESS OF THE INFORMATION CONTAINED HEREIN, AND SAME IS SUBMITTED SUBJECT TO ERRORS, OMISSIONS, CHANGE OF PRICE, RENTAL OR OTHER CONDITIONS, WITHDRAWAL WITHOUT NOTICE, AND TO ANY SPECIAL LISTING CONDITIONS IMPOSED BY THE PROPERTY OWNER(S). ANY PROJECTIONS, OPINIONS OR ESTIMATES ARE SUBJECT TO UNCERTAINTY AND DO NOT SIGNIFY CURRENT OR FUTURE PROPERTY PERFORMANCE.