

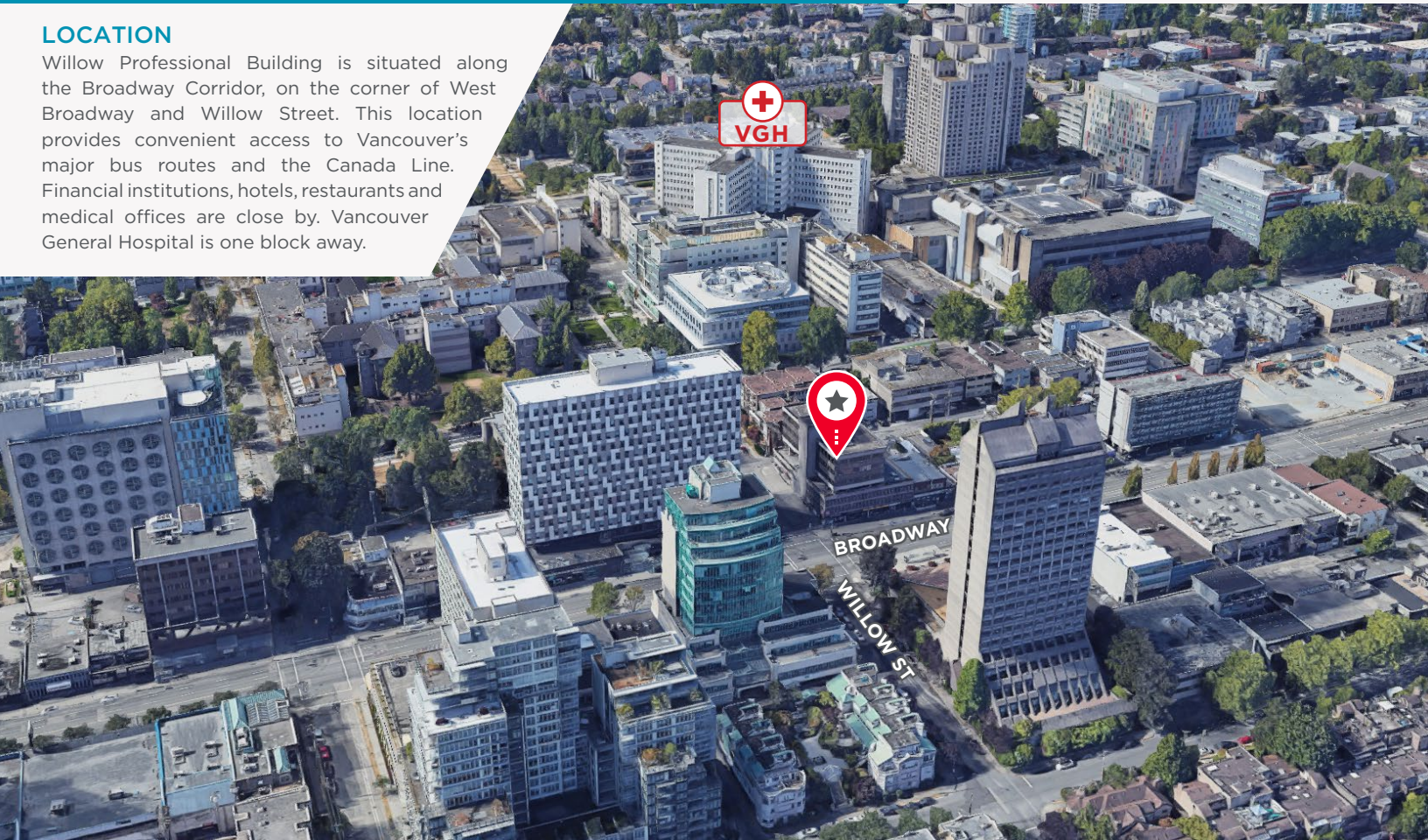
# FOR LEASE

## WILLOW PROFESSIONAL BUILDING 2525 WILLOW STREET VANCOUVER, BC



### LOCATION

Willow Professional Building is situated along the Broadway Corridor, on the corner of West Broadway and Willow Street. This location provides convenient access to Vancouver's major bus routes and the Canada Line. Financial institutions, hotels, restaurants and medical offices are close by. Vancouver General Hospital is one block away.



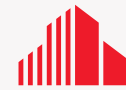
**David JW Mackay**  
Personal Real Estate Corporation  
Senior Associate  
+1 604 639 9355  
david.mackay@cushwake.com

Cushman & Wakefield  
700 West Georgia Street, Suite 1200  
Vancouver, BC V7Y 1A1  
[cushmanwakefield.com](http://cushmanwakefield.com)



# FOR LEASE

WILLOW PROFESSIONAL BUILDING  
**2525 WILLOW STREET**  
VANCOUVER, BC



**CUSHMAN &  
WAKEFIELD**



**David JW Mackay**  
Personal Real Estate Corporation  
Senior Associate  
+1 604 639 9355  
david.mackay@cushwake.com

Cushman & Wakefield  
700 West Georgia Street, Suite 1200  
Vancouver, BC V7Y 1A1  
[cushmanwakefield.com](http://cushmanwakefield.com)

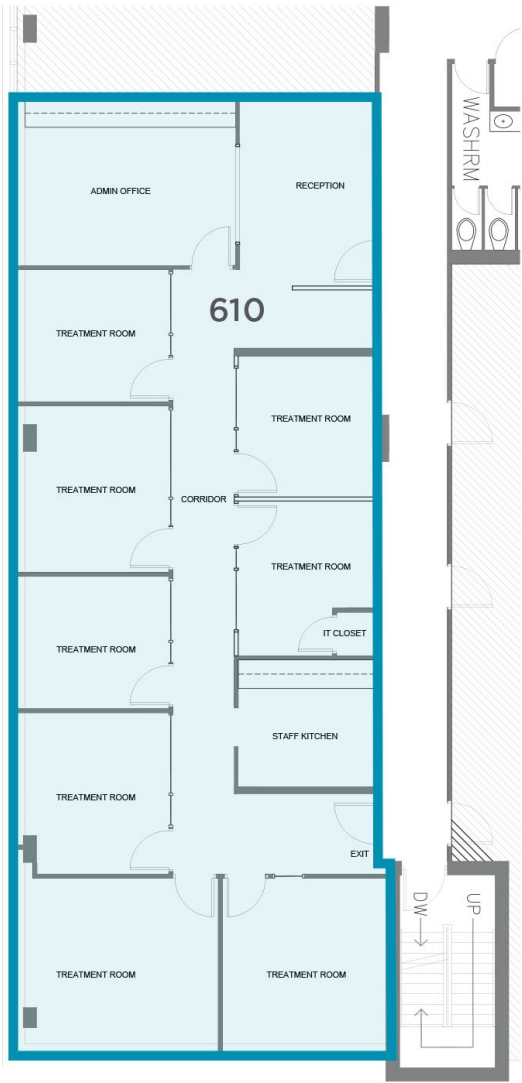
# FOR LEASE

WILLOW PROFESSIONAL BUILDING  
2525 WILLOW STREET  
VANCOUVER, BC



## AVAILABLE AREAS

| SUITE | AREA     | BASE RENT   | ADDITIONAL RENT     | DETAILS                                 |
|-------|----------|-------------|---------------------|-----------------------------------------|
| 700   | 700 SF   | \$19.00 PSF | \$24.41 (2025 EST.) | 2 offices, reception and kitchen.       |
| 610   | 2,245 SF | \$19.00 PSF | \$24.41 (2025 EST.) | 8 offices, kitchen and large reception. |





# FOR LEASE

WILLOW PROFESSIONAL BUILDING  
**2525 WILLOW STREET**  
VANCOUVER, BC



## UNIT 610





# FOR LEASE

WILLOW PROFESSIONAL BUILDING  
**2525 WILLOW STREET**  
VANCOUVER, BC



## UNIT 700



©2026 Cushman & Wakefield. All rights reserved. The information contained in this communication is strictly confidential. This information has been obtained from sources believed to be reliable but has not been verified. NO WARRANTY OR REPRESENTATION, EXPRESS OR IMPLIED, IS MADE AS TO THE CONDITION OF THE PROPERTY (OR PROPERTIES) REFERENCED HEREIN OR AS TO THE ACCURACY OR COMPLETENESS OF THE INFORMATION CONTAINED HEREIN, AND SAME IS SUBMITTED SUBJECT TO ERRORS, OMISSIONS, CHANGE OF PRICE, RENTAL OR OTHER CONDITIONS, WITHDRAWAL WITHOUT NOTICE, AND TO ANY SPECIAL LISTING CONDITIONS IMPOSED BY THE PROPERTY OWNER(S). ANY PROJECTIONS, OPINIONS OR ESTIMATES ARE SUBJECT TO UNCERTAINTY AND DO NOT SIGNIFY CURRENT OR FUTURE PROPERTY PERFORMANCE.