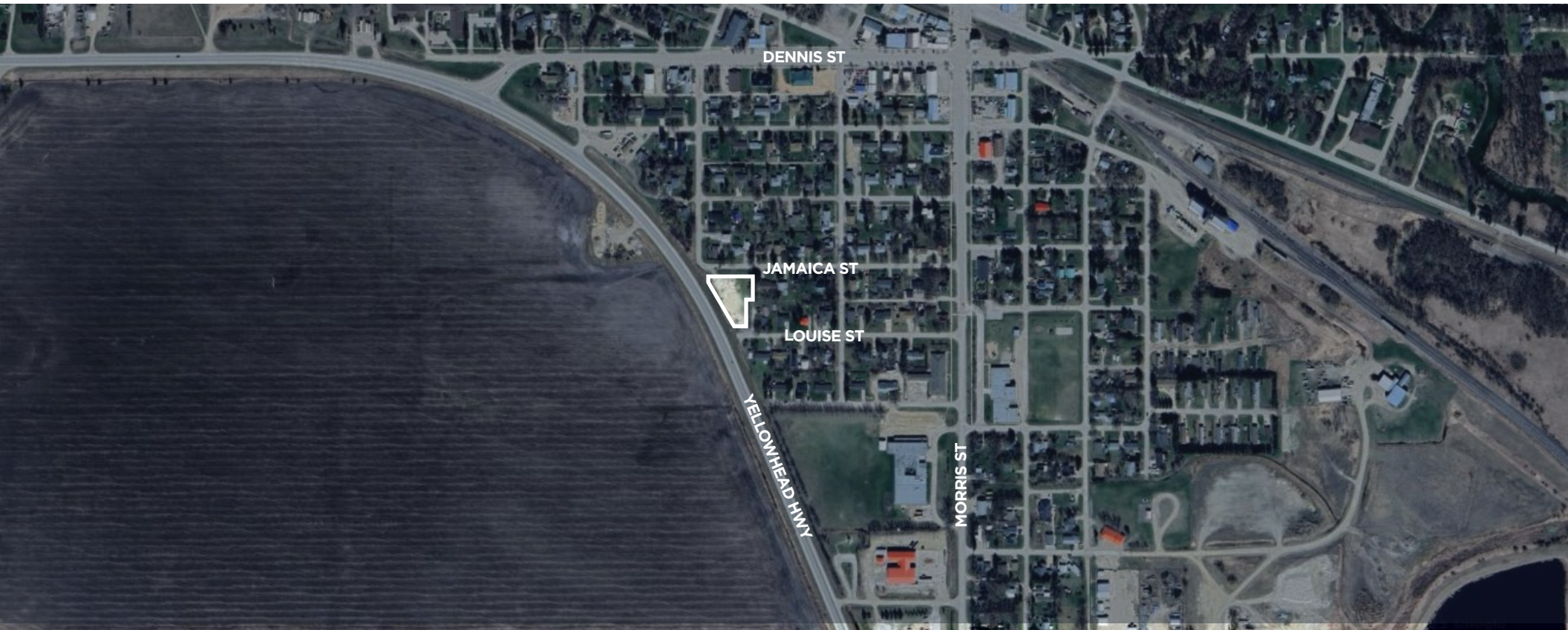


SERVICED RESIDENTIAL LOT IN GLADSTONE, MB

JAMAICA STREET, GLADSTONE, MB



Brandi Eloquence
Associate

T 204 934 6246

C 204 996 3425

brandi.eloquence@cwstevenson.ca





PROPERTY HIGHLIGHTS

(+/-) 0.69 ACRES AVAILABLE

- Opportunity to acquire a 0.69-acre lot at the end of a quiet residential block in Gladstone, MB.
- Positioned between two established residential streets, with exposure to Highway 16, offering both privacy for residents and strong visibility for future marketing or resale.
- The site is cleared and has access to municipal services, minimizing upfront development costs.
- Located within a mature residential area with strong community character.
- Ideal for a single-family build or potential multi-unit development (subject to zoning).
- All future construction must be completed above grade.

SALE PRICE: UNPRICED

PROPERTY TAX: \$784.80 (2025)



ROLL #537500

MUNICIPALITY OF WESTLAKE-GLADSTONE



COMMUNITY AND LOCATION

WestLake-Gladstone is located on Treaty 1 Territory, reflecting a rich Indigenous and settler history. The community is accessible via the Yellowhead Highway and is served by Via Rail's Winnipeg-Churchill train.



NATURAL ATTRACTIONS: BIG GRASS MARSH

Big Grass Marsh is a 12,400-acre wetland complex, half Crown land and half municipally owned. It is an Important Bird Area of Canada, hosting thousands of migratory birds such as Mallards, Snow Geese, Canada Geese, and Sandhill Cranes.



RECREATION AND OUTDOOR ACTIVITIES

The area offers Hollywood Beach, Gladstone Golf & Country Club, and Williams Park for camping and river views. Outdoor facilities include serviced campsites and amenities for visitors.

The Gladstone District Museum preserves local history and showcases the community's prairie heritage.

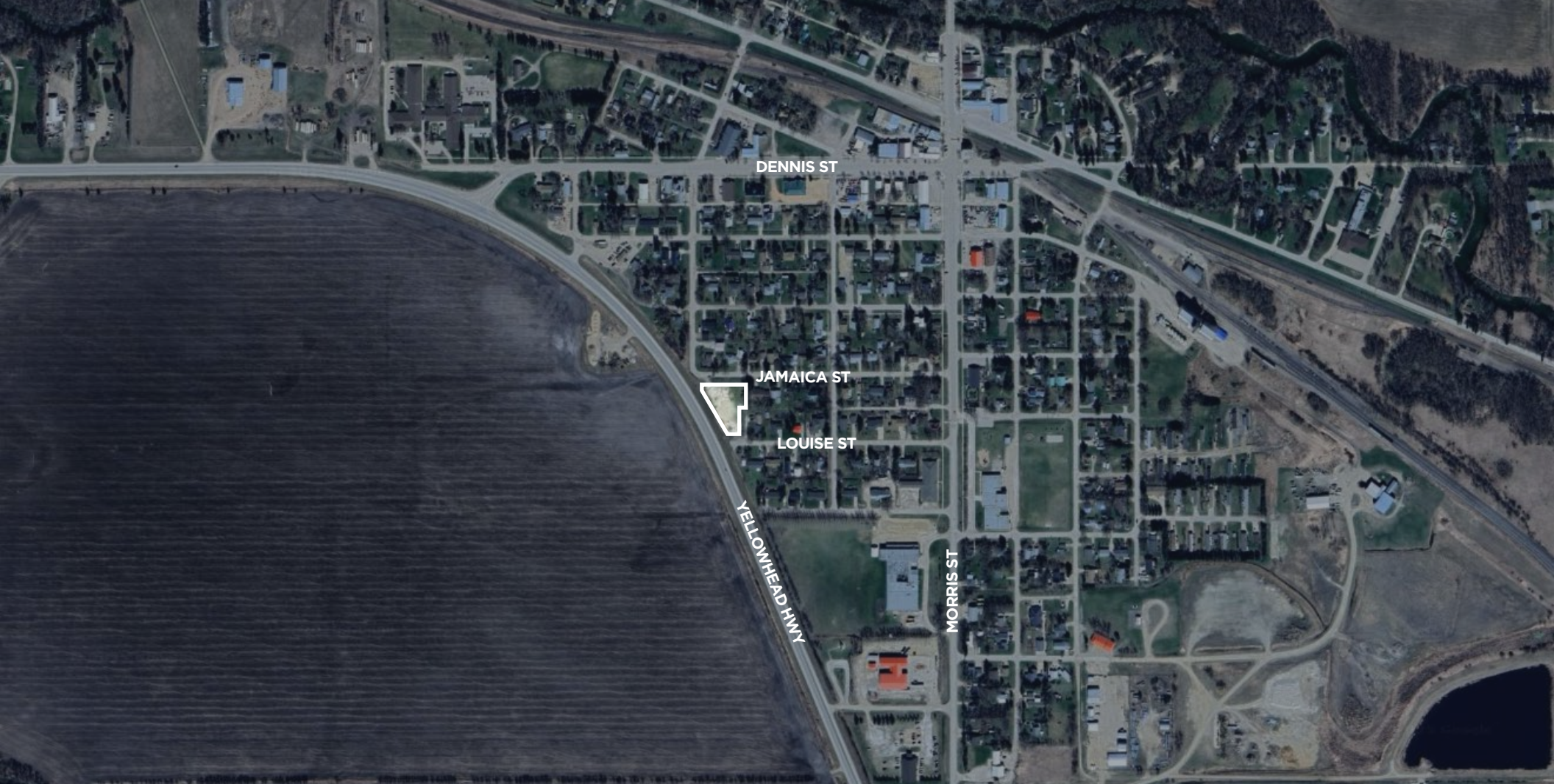


POPULATION AND GROWTH

As of the 2021 Census, Gladstone had a population of 928, showing steady growth and a welcoming small-town atmosphere.



[CLICK HERE FOR MORE INFO](#)



CONTACT

Brandi Eloquence
Associate

T 204 934 6246

C 204 996 3425

brandi.eloquence@cwstevenson.ca



**CUSHMAN &
WAKEFIELD**
Winnipeg



Stevenson

Independently Owned and Operated / A Member of the Cushman & Wakefield Alliance ©2025 Cushman & Wakefield. All rights reserved. The information contained in this communication is strictly confidential. This information has been obtained from sources believed to be reliable but has not been verified. NO WARRANTY OR REPRESENTATION, EXPRESS OR IMPLIED, IS MADE AS TO THE CONDITION OF THE PROPERTY (OR PROPERTIES) REFERENCED HEREIN OR AS TO THE ACCURACY OR COMPLETENESS OF THE INFORMATION CONTAINED HEREIN, AND SAME IS SUBMITTED SUBJECT TO ERRORS, OMISSIONS, CHANGE OF PRICE, RENTAL OR OTHER CONDITIONS, WITHDRAWAL WITHOUT NOTICE, AND TO ANY SPECIAL LISTING CONDITIONS IMPOSED BY THE PROPERTY OWNER(S). ANY PROJECTIONS, OPINIONS OR ESTIMATES ARE SUBJECT TO UNCERTAINTY AND DO NOT SIGNIFY CURRENT OR FUTURE PROPERTY PERFORMANCE.

JAMACIA STREET, GLADSTONE, MB | CWS