

FOR LEASE

INTERNATIONAL TRADEPORT

BUILDING I | 1371 TRADEPORT DR | JACKSONVILLE, FL 32218



PROPERTY HIGHLIGHTS

TOTAL AVAILABLE: ± 117,000 SF

CLEAR HEIGHT: 24'8" - 26'-11"

OFFICE SPACE: ± 14,320 SF

COLUMN SPACING: 45' x 40'

WAREHOUSE AREA: ± 102,680 SF

FIRE PROTECTION: Wet

DOCKS: 20

ZONING: PUD

PARKING: ± 126

CONSTRUCTION: Tilt-Wall

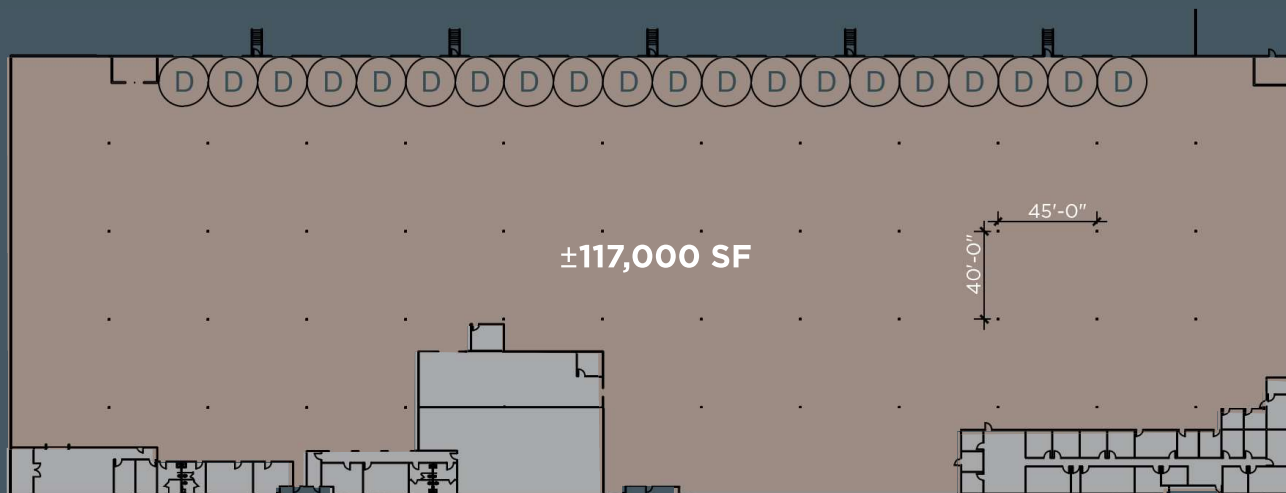
FOR MORE INFO:
WWW.GIDTRADEPORT.COM

GID
INDUSTRIAL

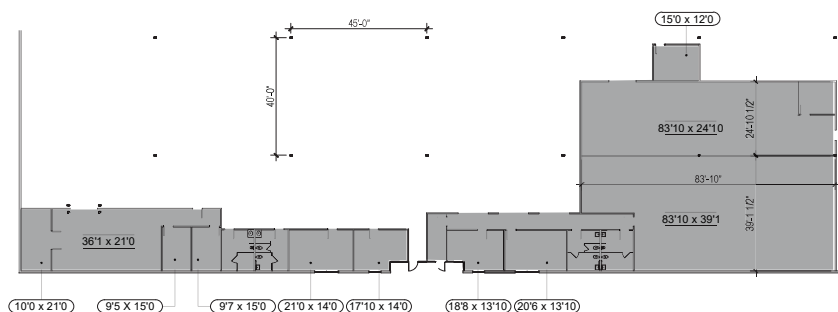
 **CUSHMAN & WAKEFIELD**

FOR LEASE

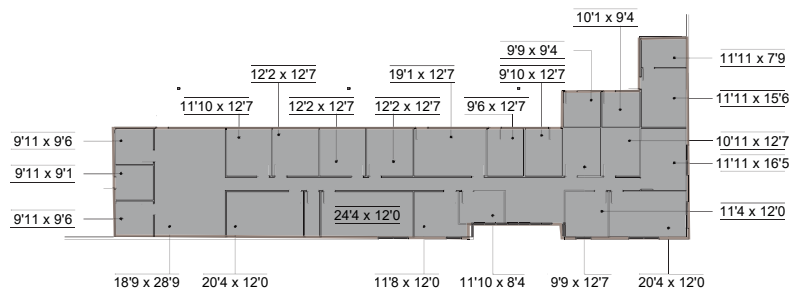
1371 TRADEPORT DR



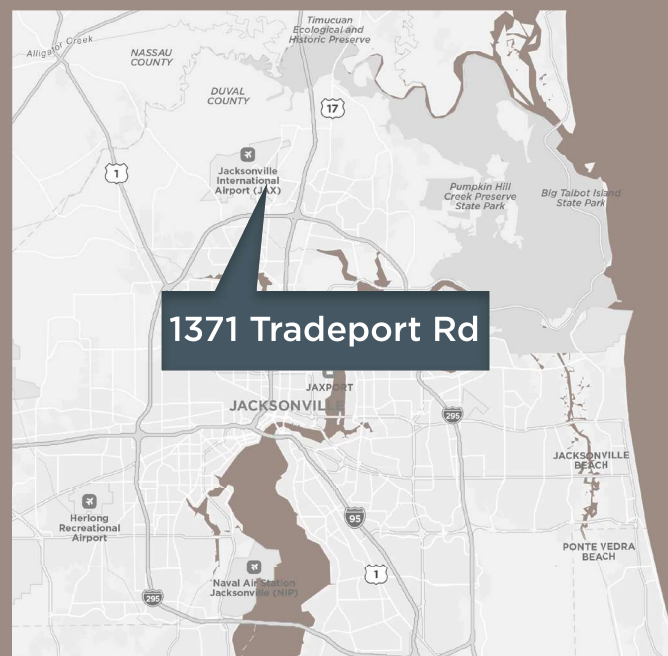
Office ±9,580 SF



Office ±4,740 SF



LOCATION



FOR MORE INFO:
WWW.GIDTRADEPORT.COM

FOR MORE INFORMATION, PLEASE CONTACT:

TYLER NEWMAN

Executive Managing Director

904 380 8336

tyler.newman@cushwake.com

JACOB HORSLEY

Executive Managing Director

904 380 8335

jacob.horsley@cushwake.com

GID
INDUSTRIAL

CUSHMAN & WAKEFIELD

©2025 Cushman & Wakefield. All rights reserved. The information contained in this communication is confidential, may be privileged and is intended for the exclusive use of the above named addressee(s). If you are not the intended recipient(s), you are expressly prohibited from copying, distributing, disseminating, or in any other way using any information contained within this communication. This information has been obtained from sources believed to be reliable but has not been verified. NO WARRANTY OR REPRESENTATION, EXPRESS OR IMPLIED, IS MADE AS TO THE CONDITION OF THE PROPERTY (OR PROPERTIES) REFERENCED HEREIN OR AS TO THE ACCURACY OR COMPLETENESS OF THE INFORMATION CONTAINED HEREIN, AND SAME IS SUBMITTED SUBJECT TO ERRORS, OMISSIONS, CHANGE OF PRICE, RENTAL OR OTHER CONDITIONS, WITHDRAWAL WITHOUT NOTICE, AND TO ANY SPECIAL LISTING CONDITIONS IMPOSED BY THE PROPERTY OWNER(S). ANY PROJECTIONS, OPINIONS OR ESTIMATES ARE SUBJECT TO UNCERTAINTY AND DO NOT SIGNIFY CURRENT OR FUTURE PROPERTY PERFORMANCE. This e-mail may be considered advertising under federal law.