

METROPLEX BUSINESS CENTER

8909, 8949 & 8969 KENAMAR DRIVE, SAN DIEGO, CALIFORNIA 92121



RYAN DOWNING, SIOR	858.546.5416	ryan.downing@cushwake.com	CA Lic. 01955032
TRINITY CARSON	619.928.6034	trinity.carson@cushwake.com	CA Lic. 02343245
BRANT ABERG, SIOR	858.546.5464	brant.aberg@cushwake.com	CA Lic. 01773573

12830 El Camino Real, Suite 100, San Diego, CA 92130 / P 858.546.5400 / F 858.630.6320 / cushmanwakefield.com

H.G. FENTON COMPANY

TRUST. SERVICE AND TRADITION SINCE 1906

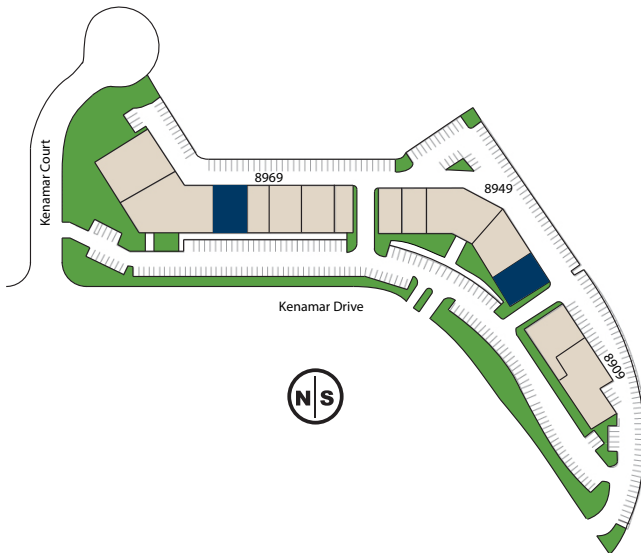
 CUSHMAN & WAKEFIELD

METROPLEX BUSINESS CENTER

8909, 8949 & 8969 KENAMAR DRIVE, SAN DIEGO, CALIFORNIA 92121

PROPERTY FEATURES:

- Three-building multi-tenant industrial / showroom park located directly behind the coveted Pyramid building
- One block off Miramar Road, close proximity to I-805 & I-15
- Ideal showroom with glass line
- High bay warehouse with approximately 22' clear height
- Excellent street frontage on Kenamar Drive



AVAILABILITY	SF	RATE	COMMENTS
8949 Kenamar Dr, Suite 101	7,043	\$1.60 NNN	2-story, mix of private offices and open office, balance warehouse. (3) grade level loading doors. Available with 30 days' notice.
8969 Kenamar Dr, Suite 105	2,327	\$1.65 NNN	2-story, mix of open office and balance warehouse. (1) grade level loading door. Available Now.

NNNs Expenses: ±\$0.38 PSF



RYAN DOWNING, SIOR 858.546.5416 ryan.downing@cushwake.com CA Lic. 01955032
TRINITY CARSON 619.928.6034 trinity.carson@cushwake.com CA Lic. 02343245
BRANT ABERG, SIOR 858.546.5464 brant.aberg@cushwake.com CA Lic. 01773573

12830 El Camino Real, Suite 100, San Diego, CA 92130 / P 858.546.5400 / F 858.630.6320 / cushmanwakefield.com

H.G. FENTON COMPANY

TRUST. SERVICE AND TRADITION SINCE 1906

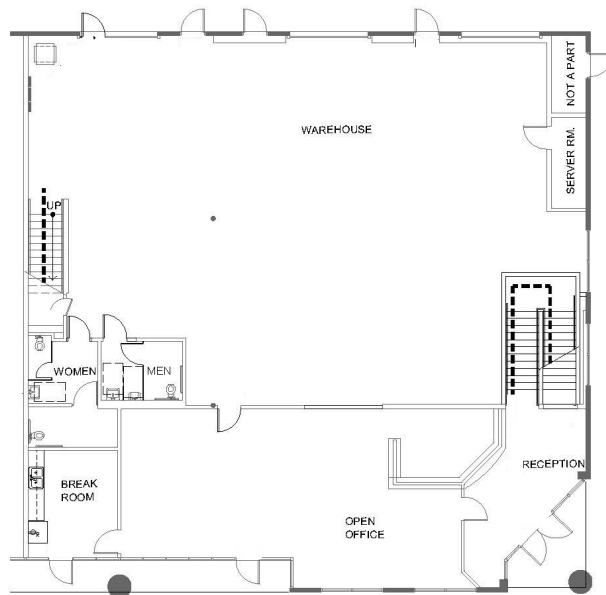
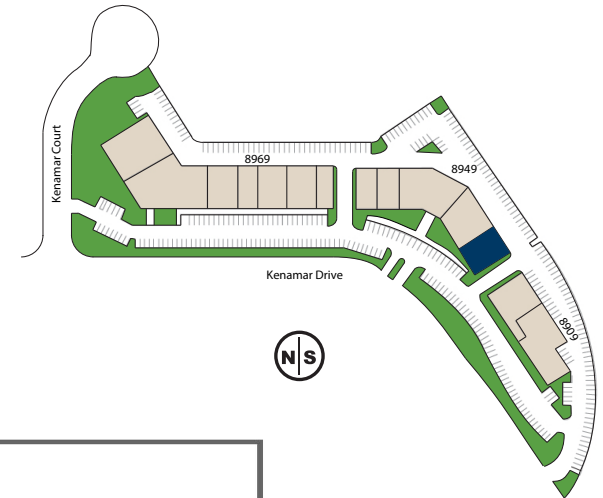
CUSHMAN & WAKEFIELD

METROPLEX BUSINESS CENTER

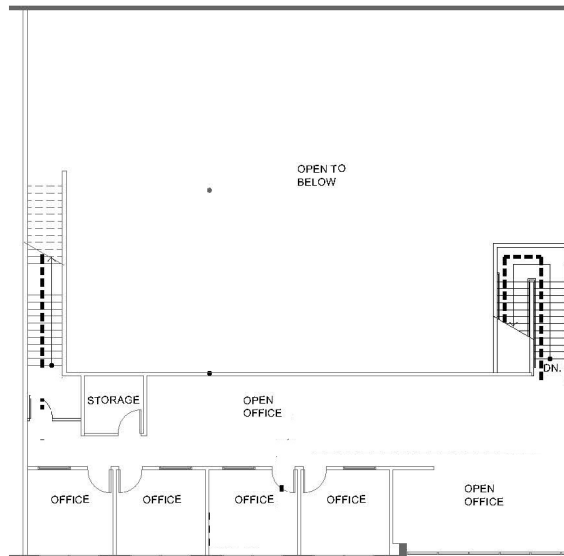
8909, 8949 & 8969 KENAMAR DRIVE, SAN DIEGO, CALIFORNIA 92121

AVAILABILITY	SF	RATE	COMMENTS
8949 Kenamar Dr, Suite 101	7,043	\$1.60 NNN	2-story, mix of private offices and open office, balance warehouse. (3) grade level loading doors. Available with 30 days' notice.

NNNs Expenses: ±\$0.38 PSF



1ST FLOOR



2ND FLOOR

RYAN DOWNING, SIOR 858.546.5416 ryan.downing@cushwake.com CA Lic. 01955032
 TRINITY CARSON 619.928.6034 trinity.carson@cushwake.com CA Lic. 02343245
 BRANT ABERG, SIOR 858.546.5464 brant.aberg@cushwake.com CA Lic. 01773573

12830 El Camino Real, Suite 100, San Diego, CA 92130 / P 858.546.5400 / F 858.630.6320 / cushmanwakefield.com

H.G. FENTON COMPANY

TRUST. SERVICE AND TRADITION SINCE 1906

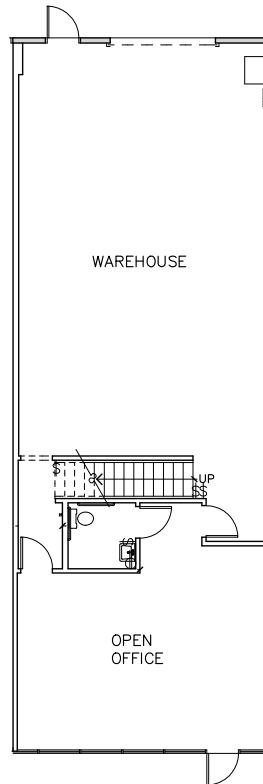
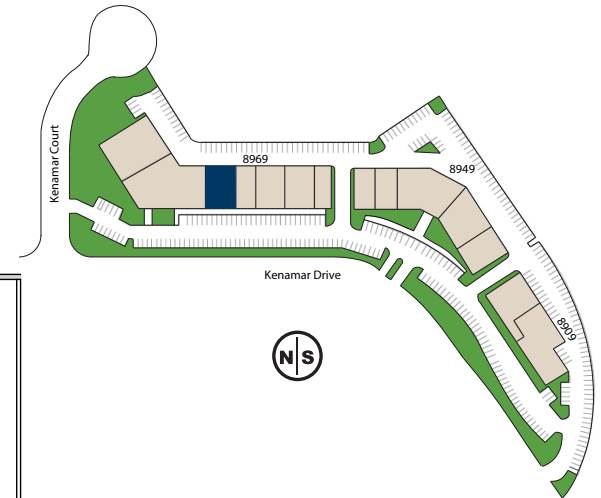
CUSHMAN & WAKEFIELD

METROPLEX BUSINESS CENTER

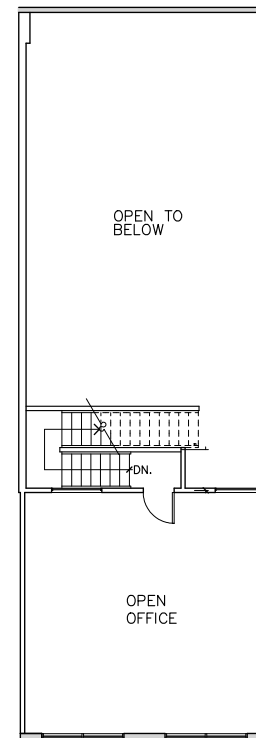
8909, 8949 & 8969 KENAMAR DRIVE, SAN DIEGO, CALIFORNIA 92121

AVAILABILITY	SF	RATE	COMMENTS
8969 Kenamar Dr, Suite 105	2,327	\$1.65 NNN	2-story, mix of open office and balance warehouse. (1) grade level loading door. Available Now.

NNNs Expenses: ±\$0.38 PSF



1ST FLOOR



2ND FLOOR

RYAN DOWNING, SIOR 858.546.5416 ryan.downing@cushwake.com CA Lic. 01955032
 TRINITY CARSON 619.928.6034 trinity.carson@cushwake.com CA Lic. 02343245
 BRANT ABERG, SIOR 858.546.5464 brant.aberg@cushwake.com CA Lic. 01773573

12830 El Camino Real, Suite 100, San Diego, CA 92130 / P 858.546.5400 / F 858.630.6320 / cushmanwakefield.com

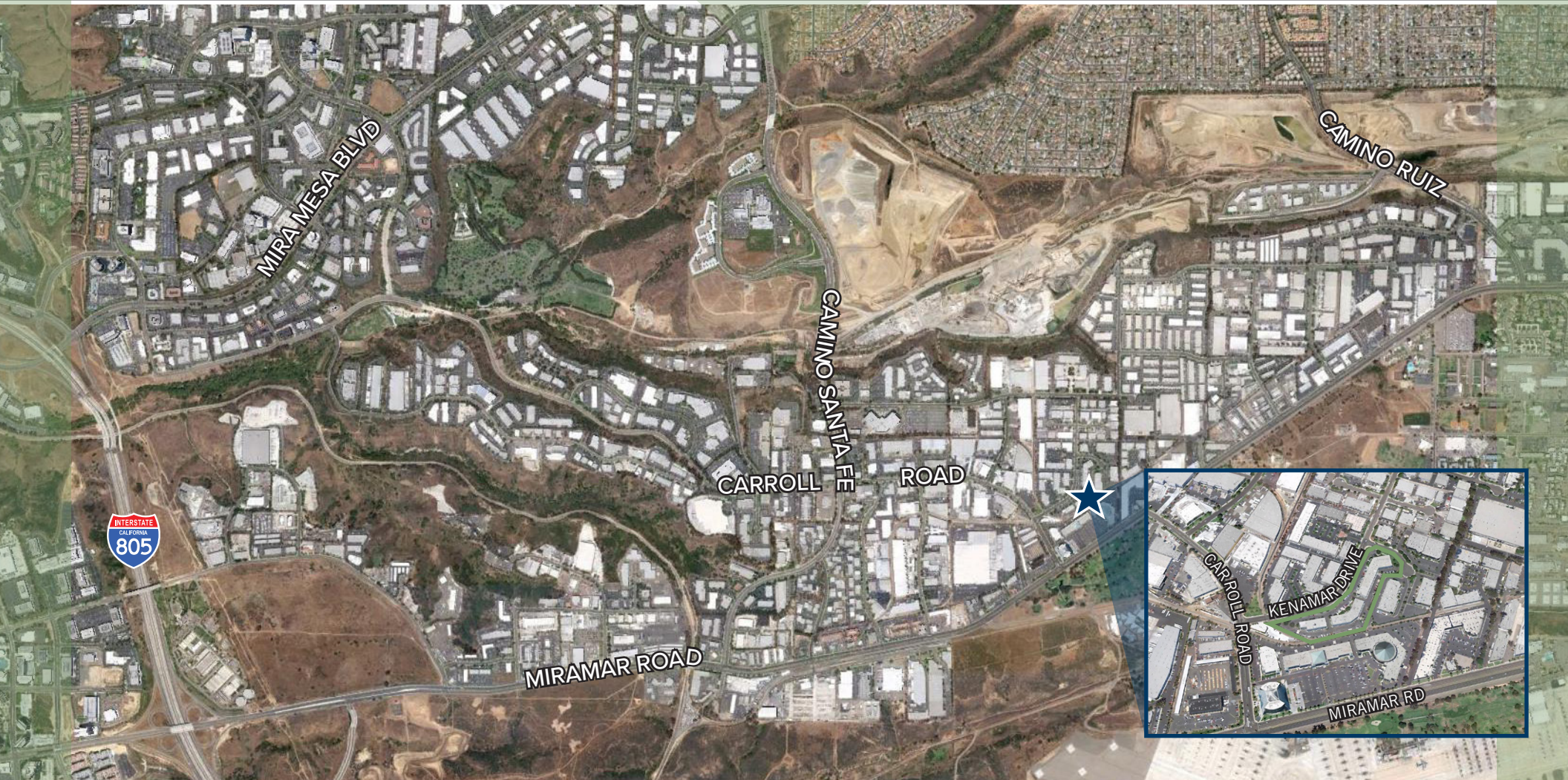


TRUST. SERVICE AND TRADITION SINCE 1906



METROPLEX BUSINESS CENTER

8909, 8949 & 8969 KENAMAR DRIVE, SAN DIEGO, CALIFORNIA 92121



©Cushman & Wakefield. All rights reserved. The information contained in this communication is strictly confidential. This information has been obtained from sources believed to be reliable but has not been verified. NO WARRANTY OR REPRESENTATION, EXPRESS OR IMPLIED, IS MADE AS TO THE CONDITION OF THE PROPERTY (OR PROPERTIES) REFERENCED HEREIN OR AS TO THE ACCURACY OR COMPLETENESS OF THE INFORMATION CONTAINED HEREIN, AND SAME IS SUBMITTED SUBJECT TO ERRORS, OMISSIONS, CHANGE OF PRICE, RENTAL OR OTHER CONDITIONS, WITHDRAWAL WITHOUT NOTICE, AND TO ANY SPECIAL LISTING CONDITIONS IMPOSED BY THE PROPERTY OWNER(S). ANY PROJECTIONS, OPINIONS OR ESTIMATES ARE SUBJECT TO UNCERTAINTY AND DO NOT SIGNIFY CURRENT OR FUTURE PROPERTY PERFORMANCE.

RYAN DOWNING, SIOR	858.546.5416	ryan.downing@cushwake.com	CA Lic. 01955032
TRINITY CARSON	619.928.6034	trinity.carson@cushwake.com	CA Lic. 02343245
BRANT ABERG, SIOR	858.546.5464	brant.aberg@cushwake.com	CA Lic. 01773573

12830 El Camino Real, Suite 100, San Diego, CA 92130 / P 858.546.5400 / F 858.630.6320 / cushmanwakefield.com

H.G. FENTON COMPANY

TRUST. SERVICE AND TRADITION SINCE 1906

CUSHMAN & WAKEFIELD