

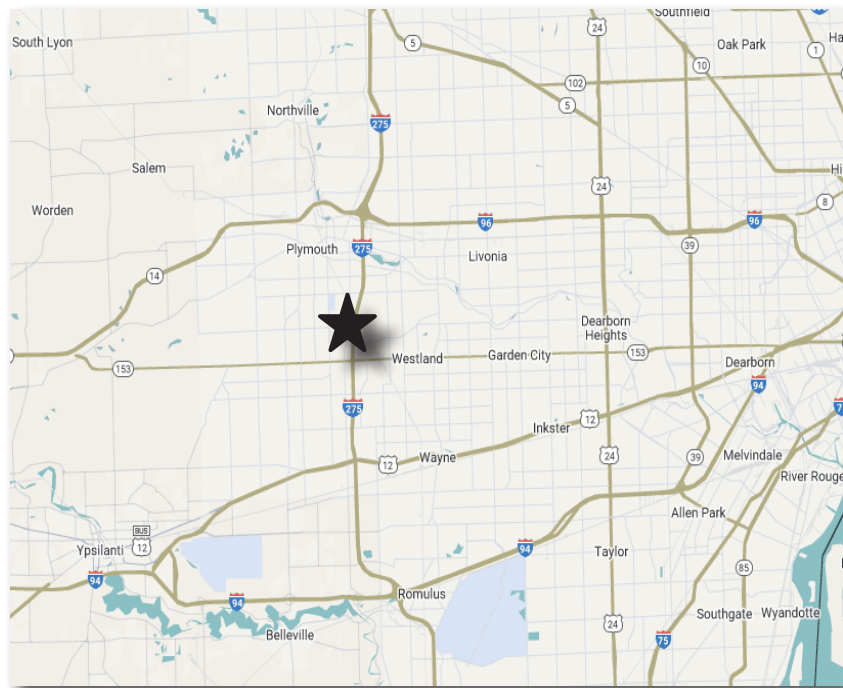
FOR LEASE

**8464 Ronda Drive
Canton, MI 48187**



SPACE HIGHLIGHTS

- 38,462 SF with +/- 2,500 SF of office
- (One) 1 dock, ability to add additional dock door
- Two (2) 12' x 14' overhead doors
- 1500a/120-240v/3p (buss duct)
- LEDs in warehouse
- Cambridge ventilation system
- 50 surface parking spaces, additional spaces possible
- 21' ceiling clearance
- Close proximity to I-275

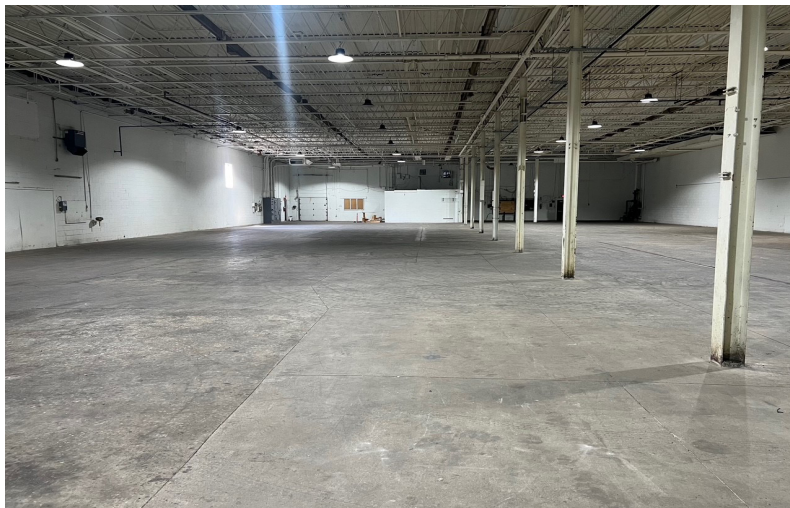
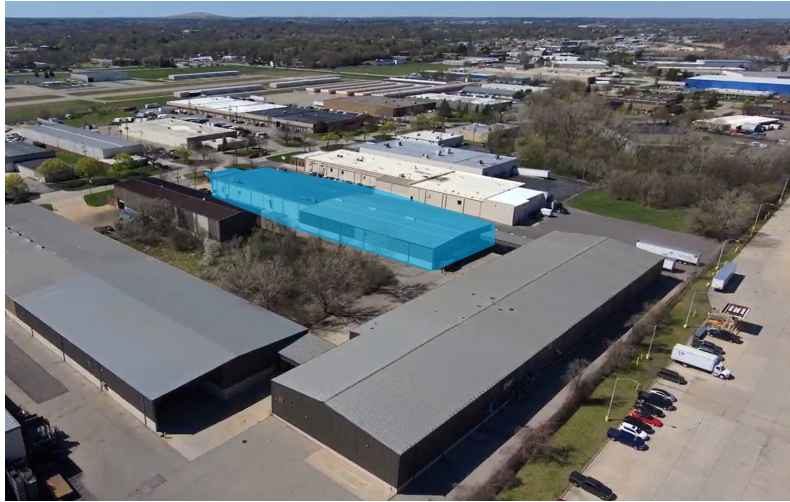


CONNER SALSBERY
DIRECTOR
+1 248 358 6114
conner.salsberry@cushwake.com

TONY AVENDT
EXECUTIVE DIRECTOR
+1 248 358 6115
tony.avendt@cushwake.com

FOR LEASE

**8464 Ronda Drive
Canton, MI 48187**



PROPERTY INFORMATION

Address	8464 Ronda Drive Canton, MI 48187
Total Building Area	38,462 SF
Office Area	+/- 2,500 SF
Industrial Area	35,962 SF
Primary Use	Warehouse/distribution
Property Class	C
Year Built/Renovated	1977 / 2021 / 2024
Roof	Membrane and metal seam
Auto Parking	50 surface spaces, additional possible
Loading	One (1) dock (ability to add additional dock door), (2) 12'x14' overhead doors
Zoning	L-1 (Light Industrial)
Construction	Masonry and steel panel
Outside Storage / Trailer Staging	None
Ceiling Clearance	21'
Industrial Area HVAC	Partial HVAC / Cambridge ventilation
Industrial Area Lighting	LED
Power	1500a/120-240v/3p (buss duct)
Fire Suppression	Ordinary hazard
Cranes	None
Asking Rate	\$7.25/SF NNN
Operating Expenses	\$2.20/SF

TONY AVENDT
EXECUTIVE DIRECTOR
+1 248 358 6115
tony.avendt@cushwake.com

CONNER SALSBERY
DIRECTOR
+1 248 358 6114
conner.salsberry@cushwake.com

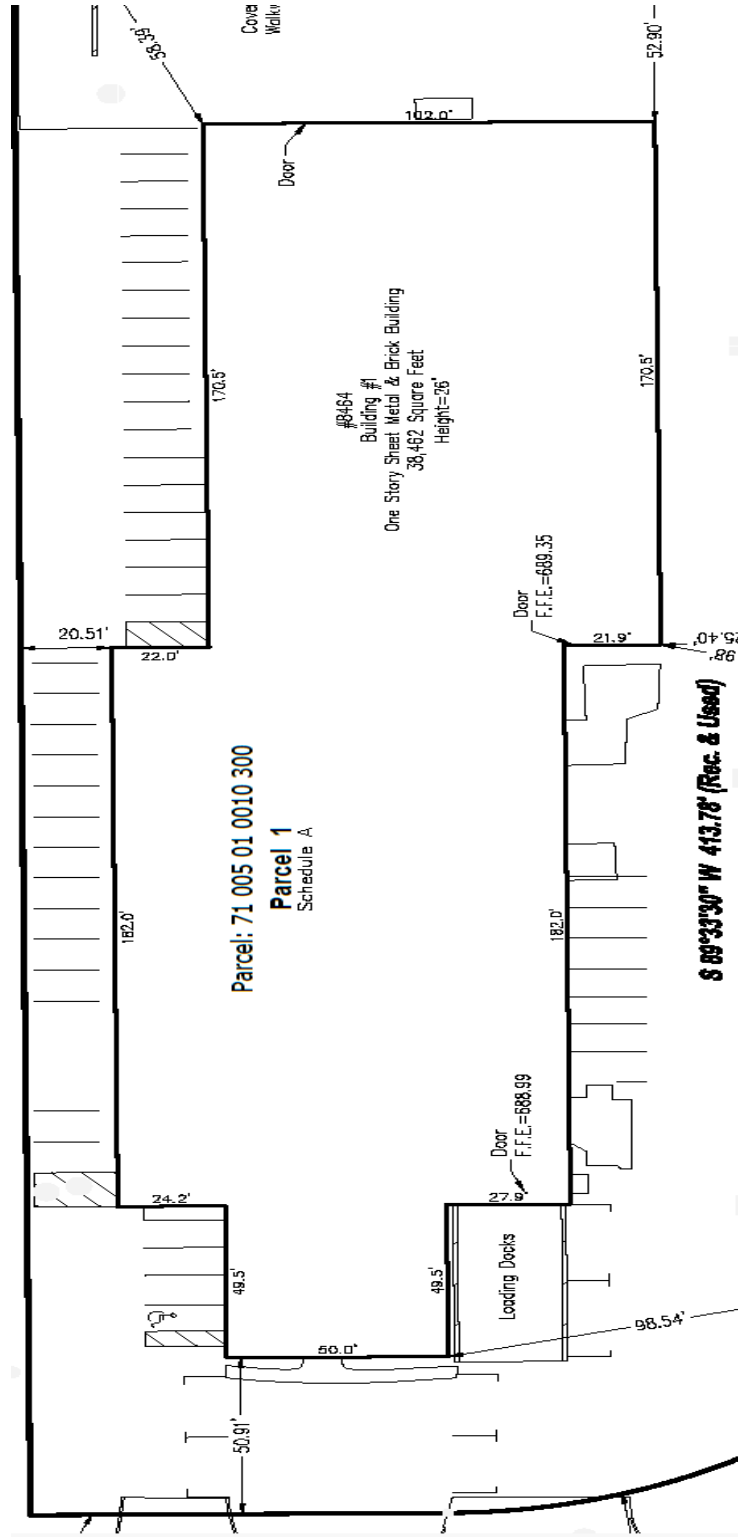
FOR LEASE

8464 Ronda Drive
Canton, MI 48187



CUSHMAN &
WAKEFIELD

SURVEY



TONY AVENDT
EXECUTIVE DIRECTOR
+1 248 358 6115
tony.avendt@cushwake.com

CONNER SALSBERY
DIRECTOR
+1 248 358 6114
conner.salsberry@cushwake.com



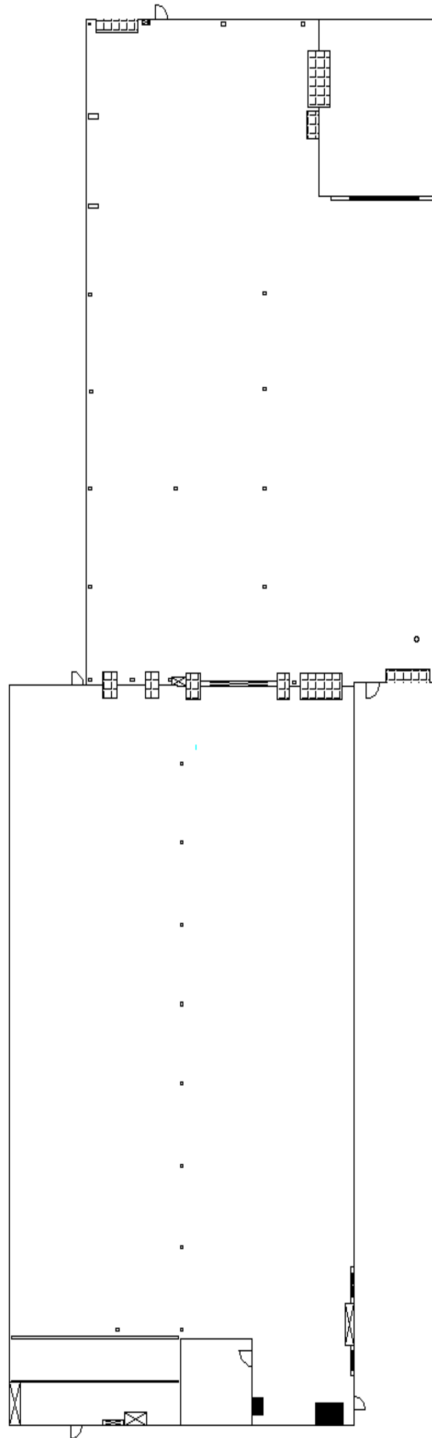
FOR LEASE

**8464 Ronda Drive
Canton, MI 48187**



**CUSHMAN &
WAKEFIELD**

FLOOR PLAN



CONNER SALSBERY

DIRECTOR

+1 248 358 6114

conner.salsberry@cushwake.com

TONY AVENDT

EXECUTIVE DIRECTOR

+1 248 358 6115

tony.avendt@cushwake.com



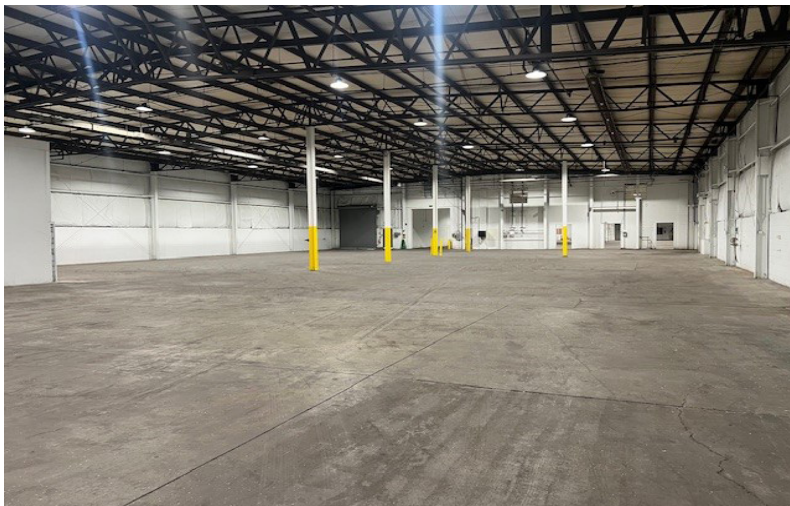
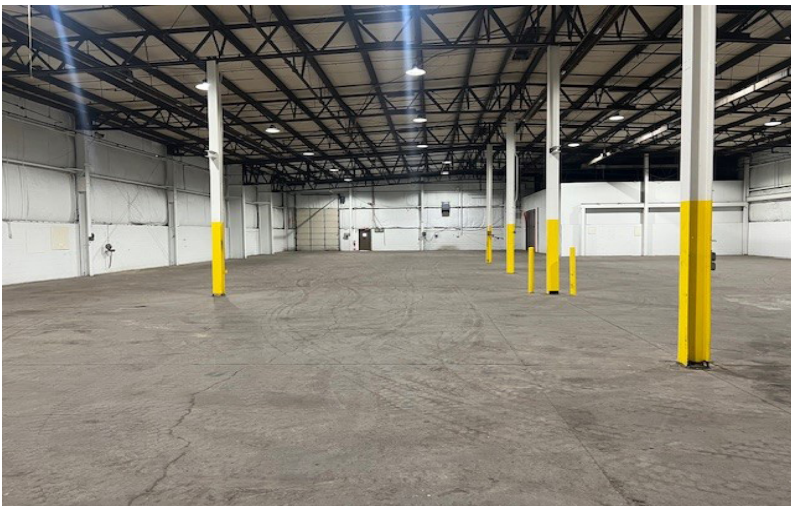
FOR LEASE

**8464 Ronda Drive
Canton, MI 48187**



**CUSHMAN &
WAKEFIELD**

PHOTOS



CONNER SALSBERY

DIRECTOR

+1 248 358 6114

conner.salsberry@cushwake.com

TONY AVENDT

EXECUTIVE DIRECTOR

+1 248 358 6115

tony.avendt@cushwake.com

FOR LEASE

**8464 Ronda Drive
Canton, MI 48187**



**CUSHMAN &
WAKEFIELD**



CONNER SALSBERY
DIRECTOR
+1 248 358 6114
conner.salsberry@cushwake.com

TONY AVENDT
EXECUTIVE DIRECTOR
+1 248 358 6115
tony.avendt@cushwake.com

CUSHMAN & WAKEFIELD COPYRIGHT 2025. NO WARRANTY OR REPRESENTATION, EXPRESS OR IMPLIED, IS MADE TO THE ACCURACY OR COMPLETENESS OF THE INFORMATION CONTAINED HEREIN, AND SAME IS SUBMITTED SUBJECT TO ERRORS, OMISSIONS, CHANGE OF PRICE, RENTAL OR OTHER CONDITIONS, WITHDRAWAL WITHOUT NOTICE, AND TO ANY SPECIAL LISTING CONDITIONS IMPOSED BY THE PROPERTY OWNER(S). AS APPLICABLE, WE MAKE NO REPRESENTATION AS TO THE CONDITION OF THE PROPERTY (OR PROPERTIES) IN QUESTION.