

# 207

---

## THOMPSON STREET

GREENWICH VILLAGE

EARLY CHILDHOOD EDUCATION SPACE FOR LEASE



## THOMPSON STREET

### LOCATION

Between West 3<sup>rd</sup> and Bleecker Streets- Greenwich Village

### SPACE SPECIFICATIONS

Second Floor: 2,619 SF

Ground Floor: 2,544 SF

Lower Level: 2,542 SF

Total: 7,705 SF

### ASKING RENT

Please Inquire

### POSSESSION

Immediate

### FRONTAGE

Approx. 15 FT on Thompson St

### TERM

Negotiable – Long Term

### HIGHLIGHTS

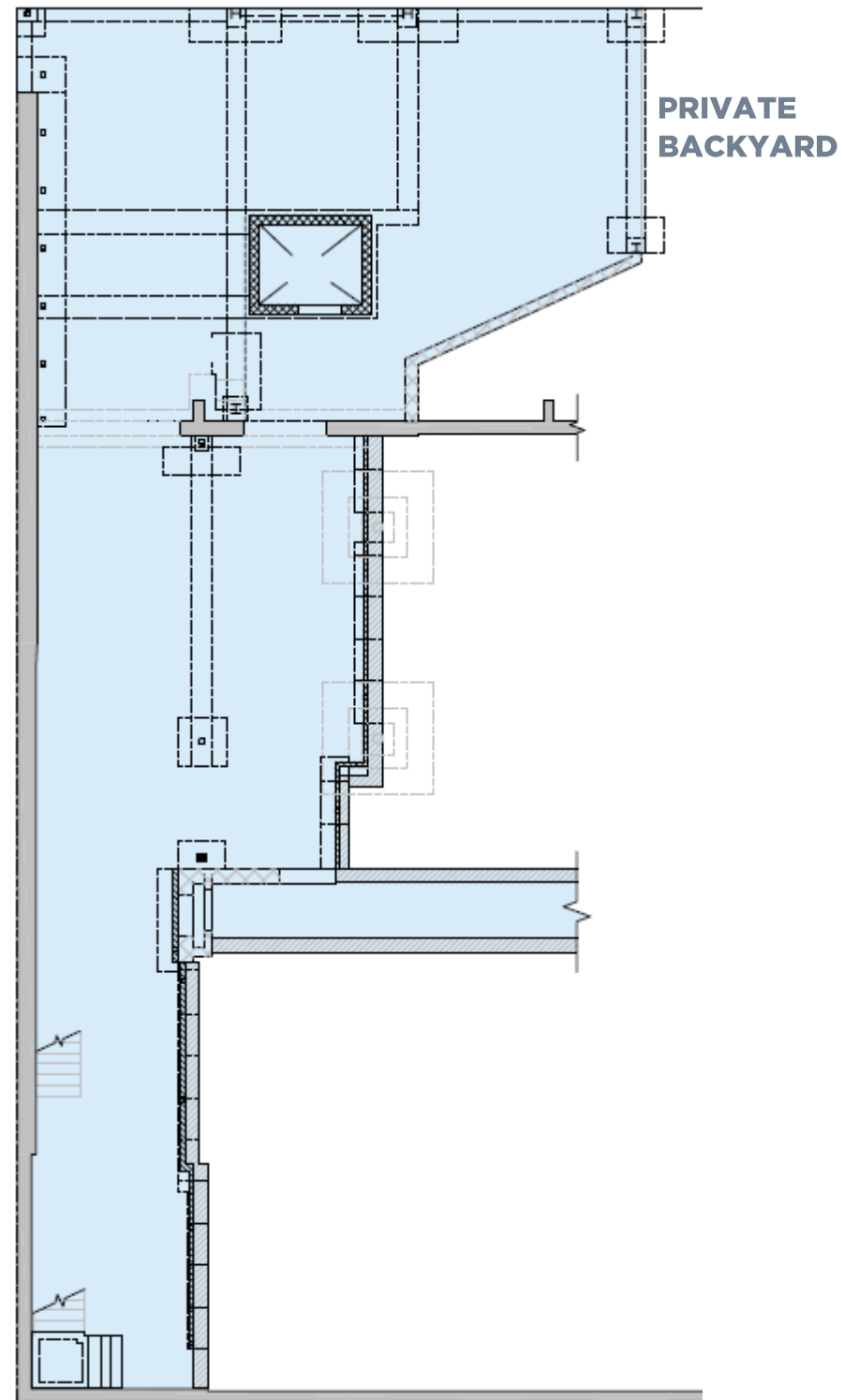
- Childcare/daycare/educational opportunity on a tree-lined street of Greenwich Village
- Thoughtfully designed early childhood education build out with multiple classrooms and amenity rooms
- Tenant-exclusive rear yard with existing play structures
- Dedicated, ADA-accessible entrance on Thompson Street
- Elevator in place servicing all floors
- Adult and child restrooms on all levels



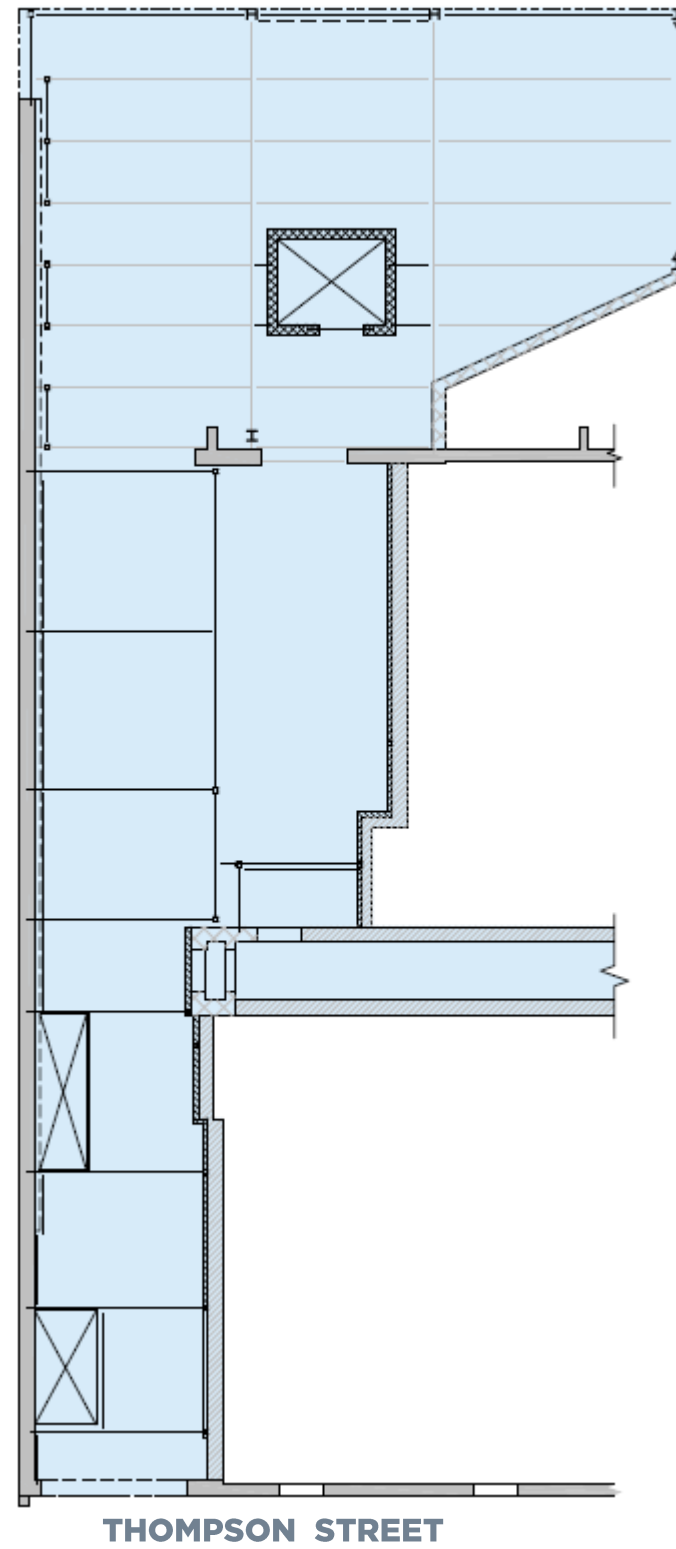
# 207

THOMPSON  
STREET

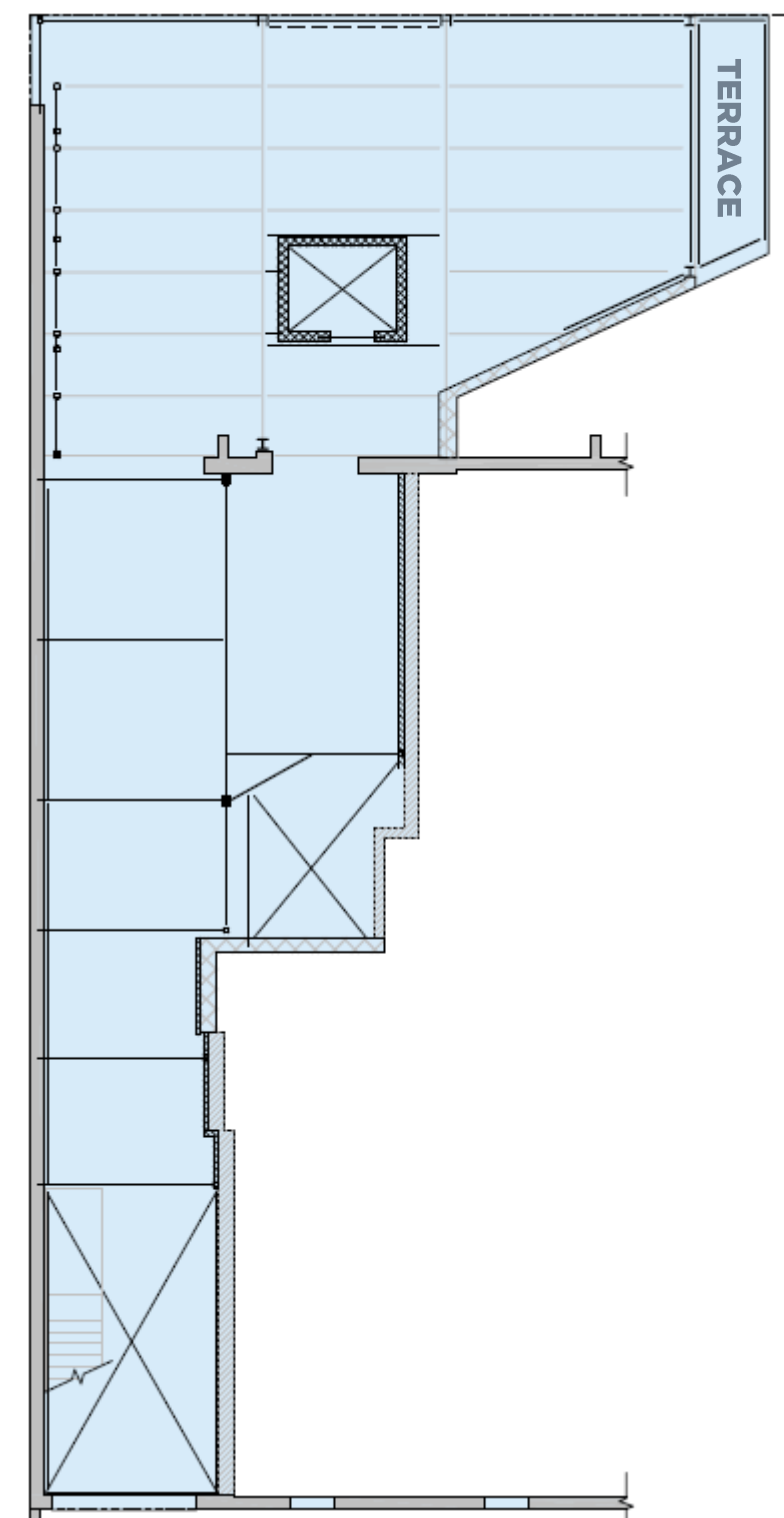
**Lower - 2,542 SF**



**Ground - 2,544 SF**



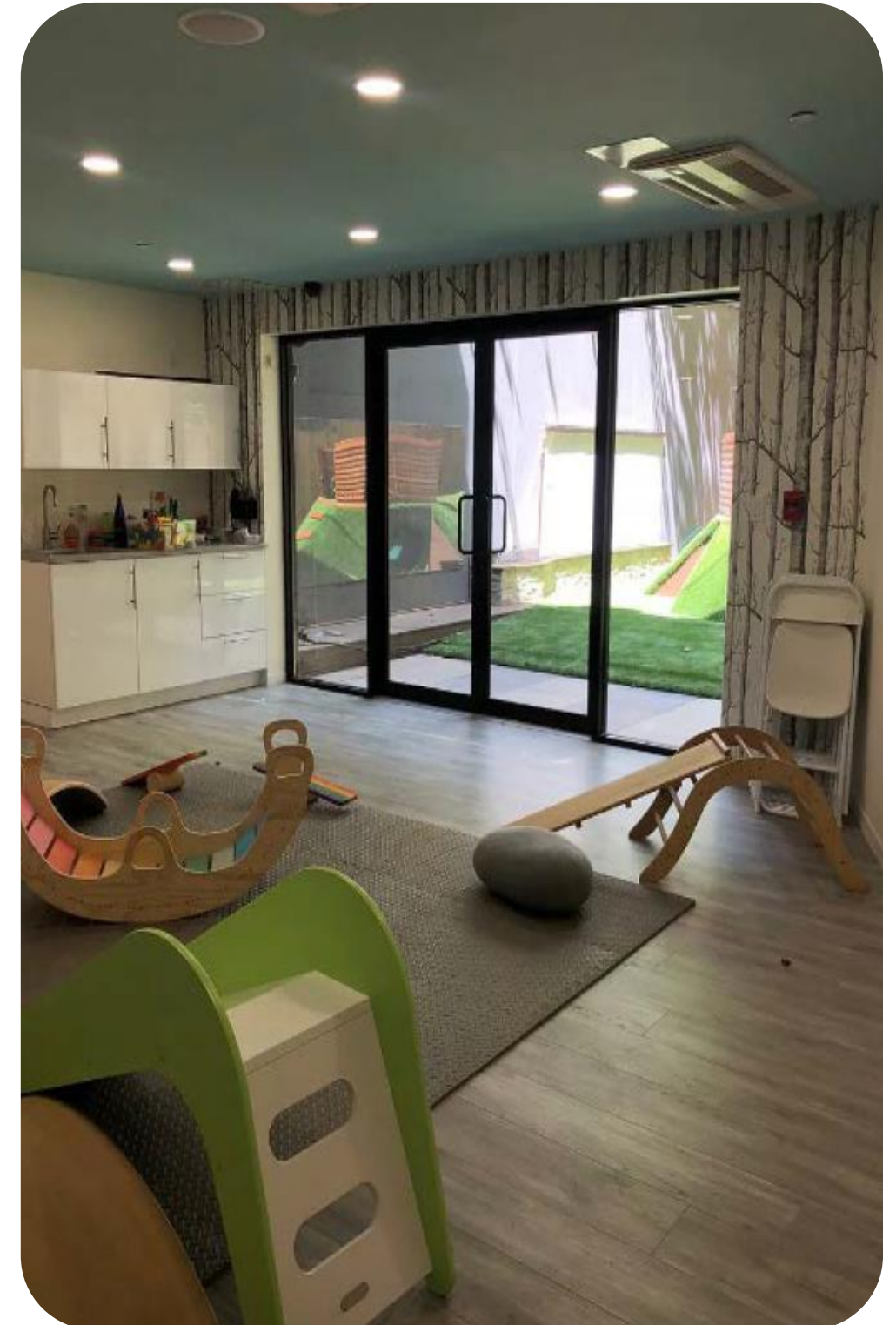
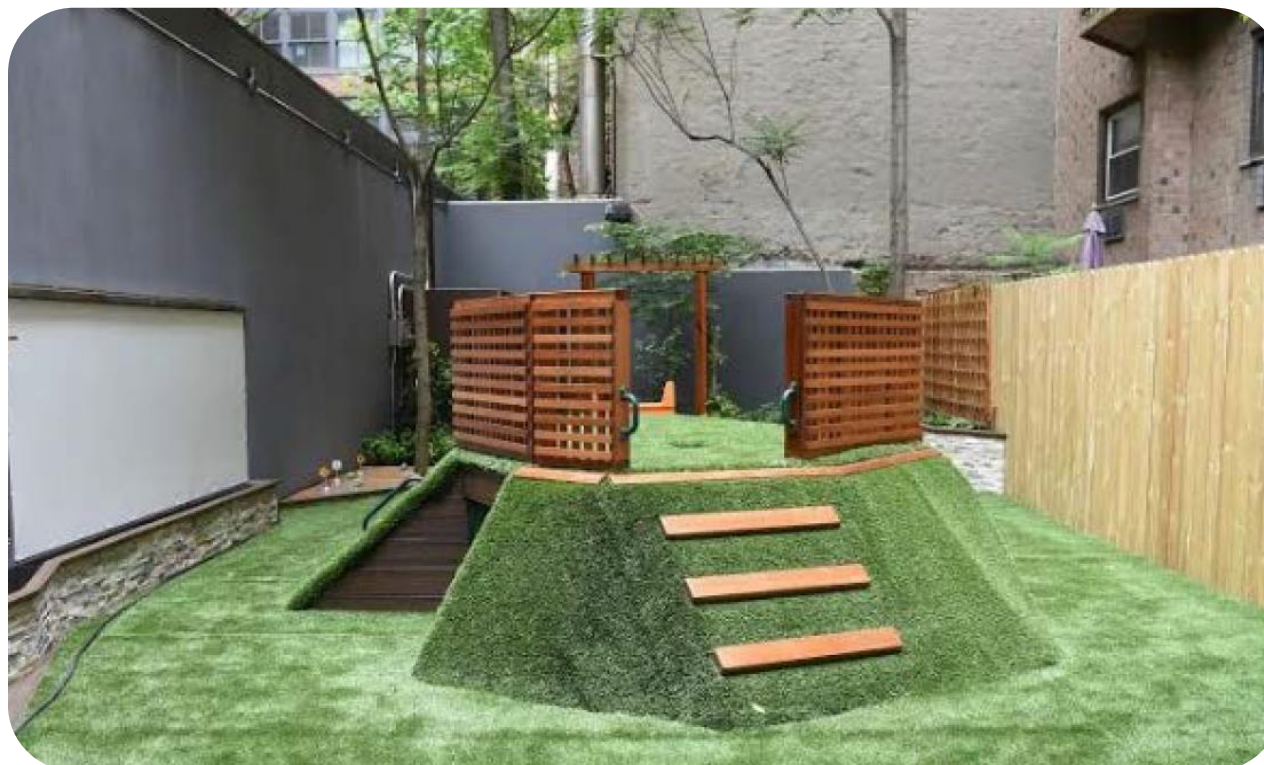
**Second - 2,619 SF**



# 207

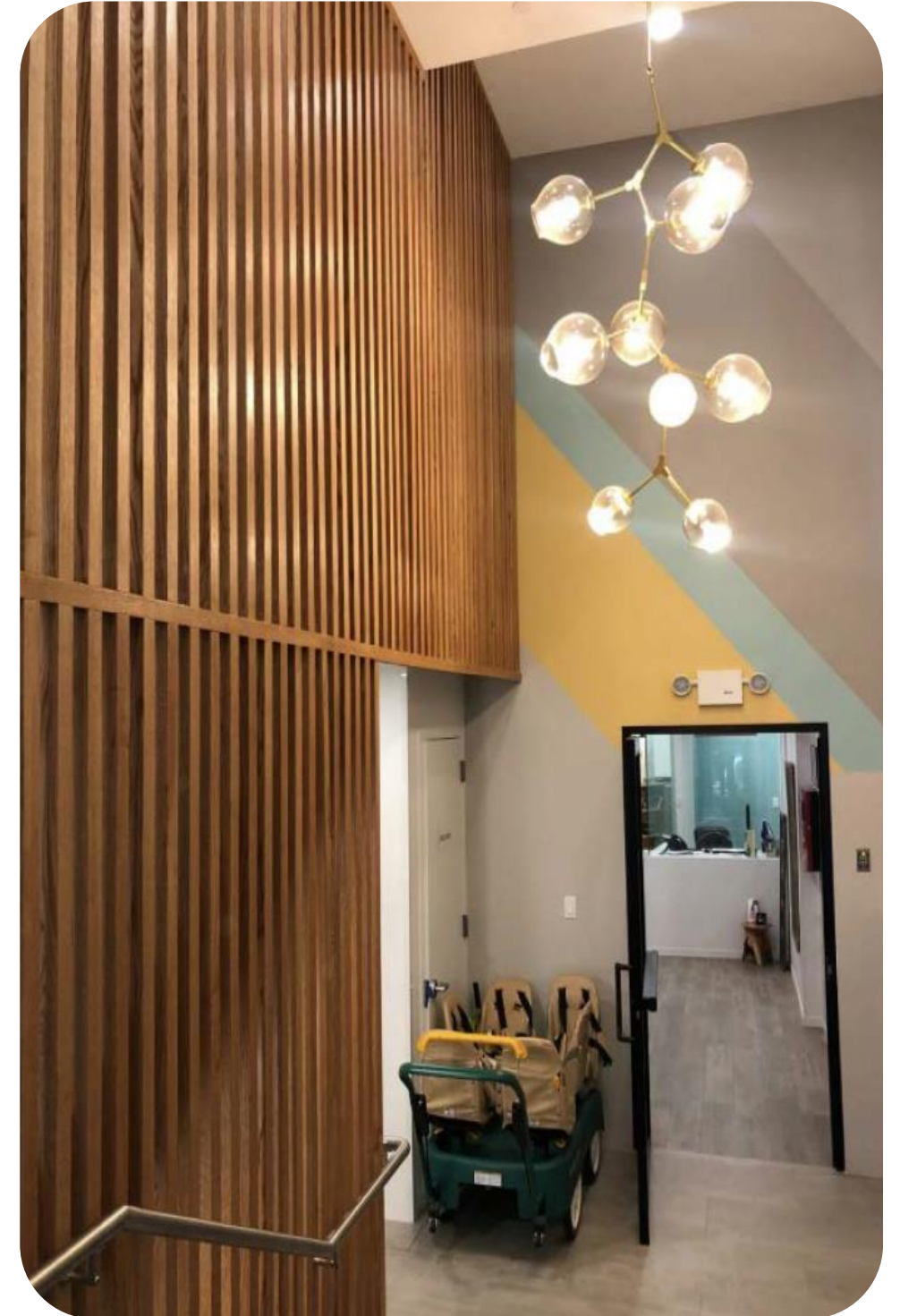
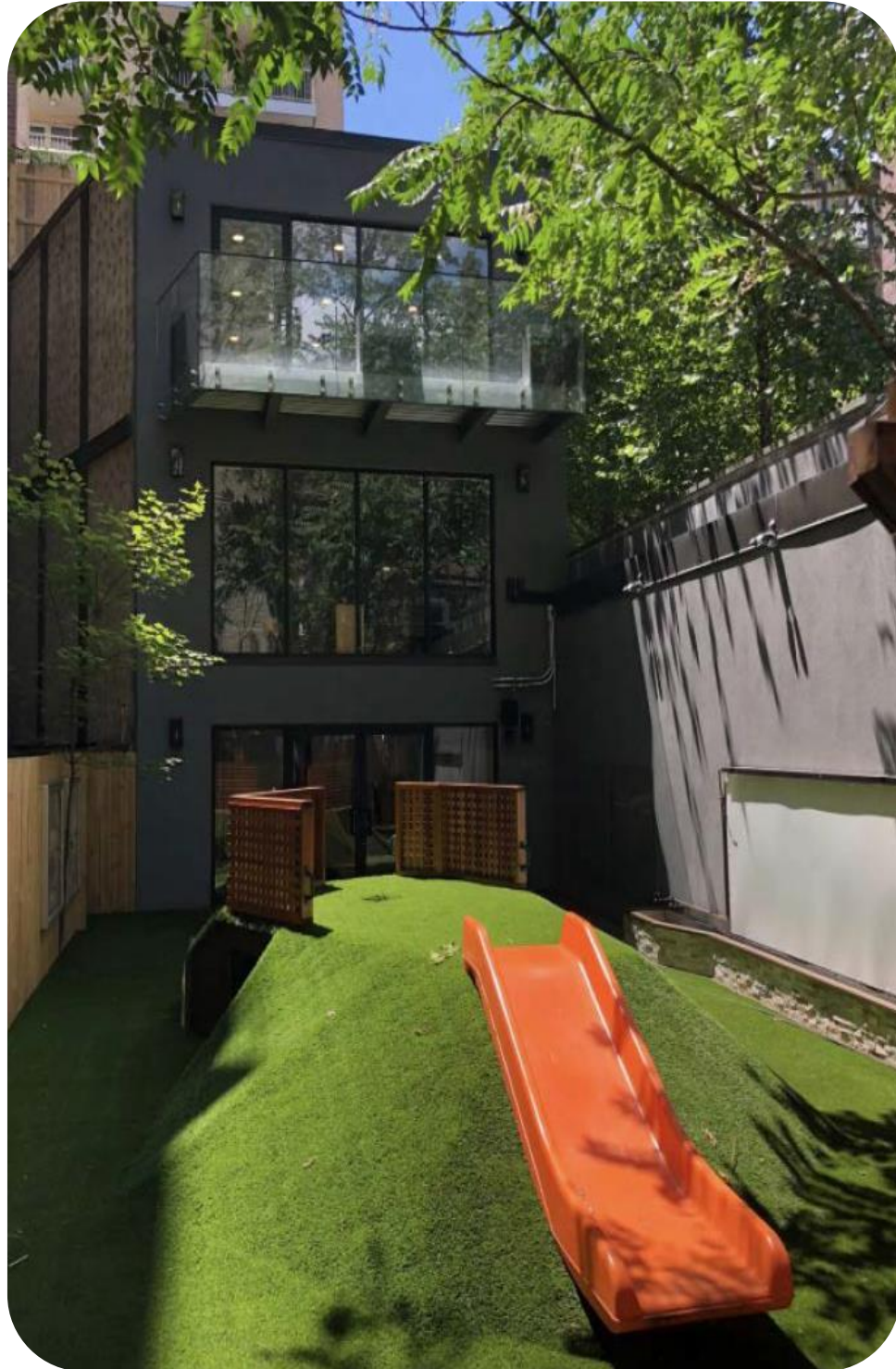
THOMPSON  
STREET

- ✓ ADA-accessible entrance
- ✓ Private backyard
- ✓ Dedicated elevator
- ✓ Classrooms on all levels
- ✓ Separate adult & student restrooms
- ✓ Natural light on each floor
- ✓ Built administrative/security office
- ✓ Kitchenette



# 207

THOMPSON  
STREET



# 207

---

## THOMPSON STREET

GREENWICH VILLAGE

Please Contact Us With Leasing Inquiries

**SEAN MORAN**

**+1 212 841 7668**

**SEAN.MORAN@CUSHWAKE.COM**

**PATRICK O'ROURKE**

**+1 212 660 7777**

**PATRICK.OROURKE@CUSHWAKE.COM**

**CATHERINE MERCK**

**+1 212 698 2621**

**CATHERINE.MERCK@CUSHWAKE.COM**

